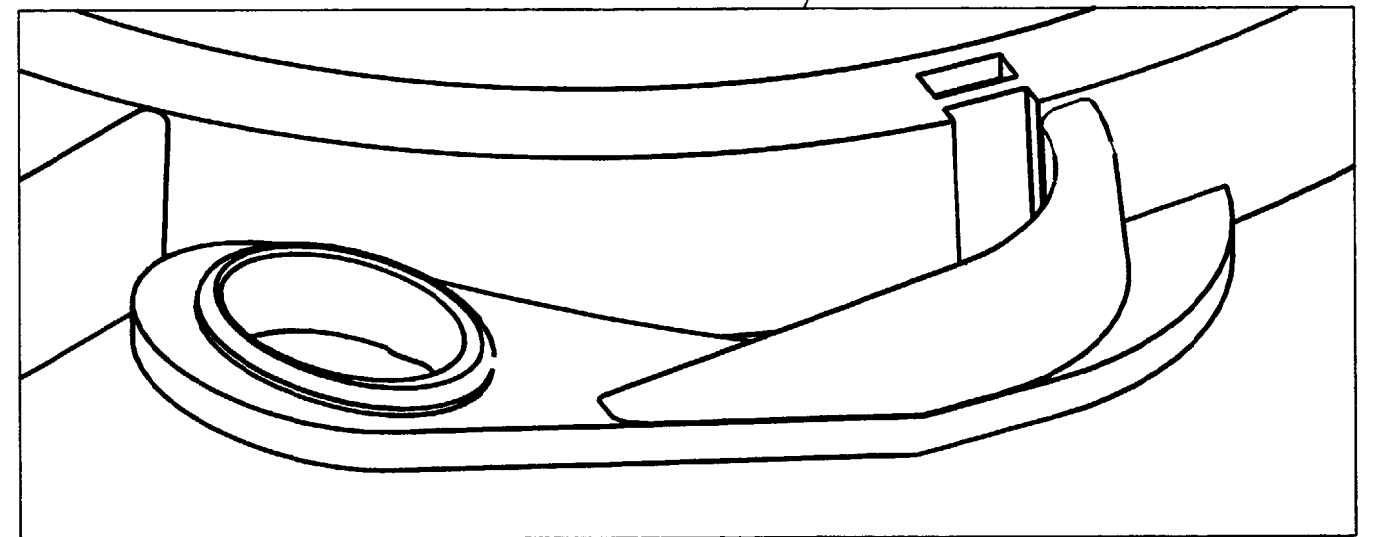
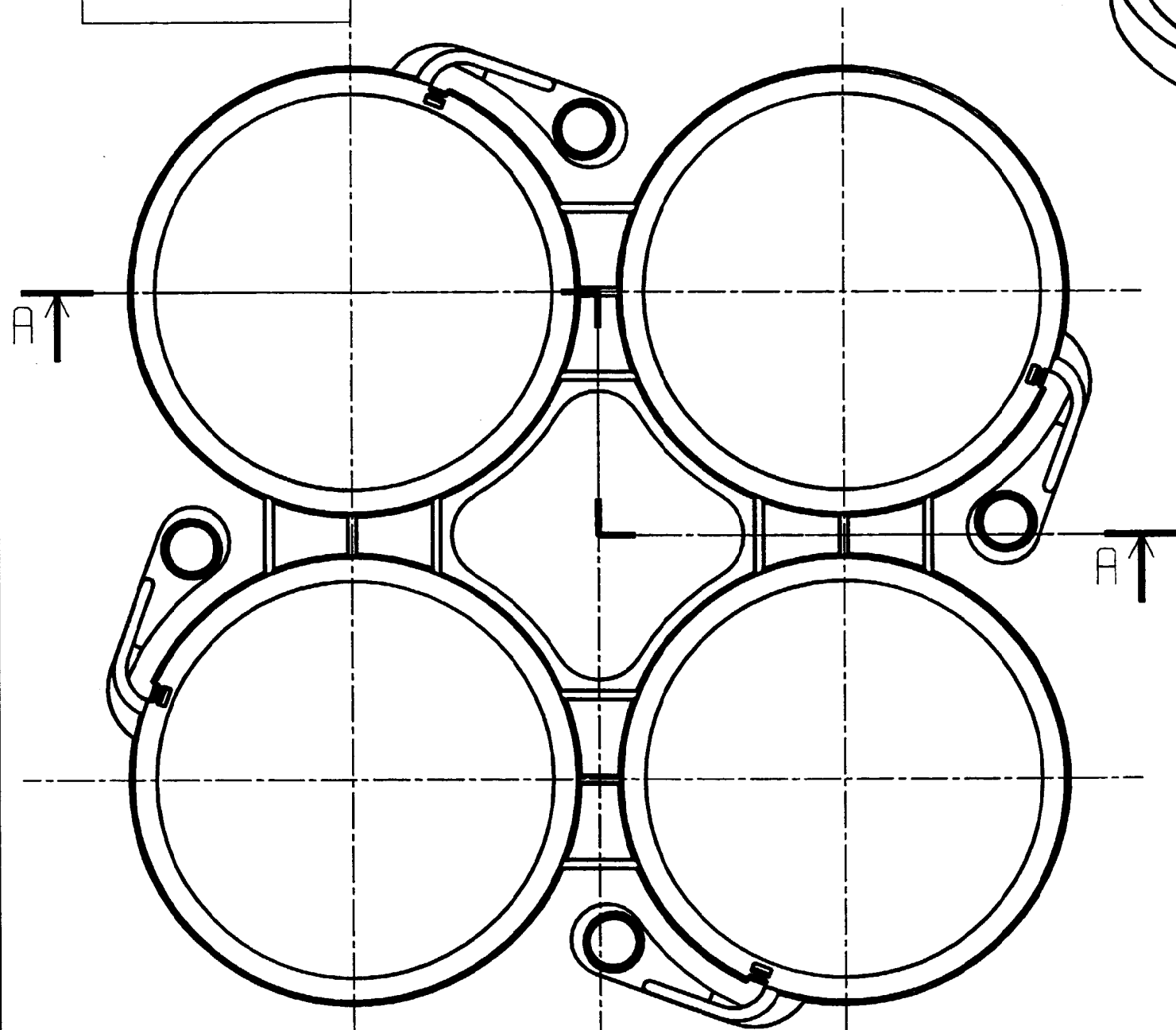
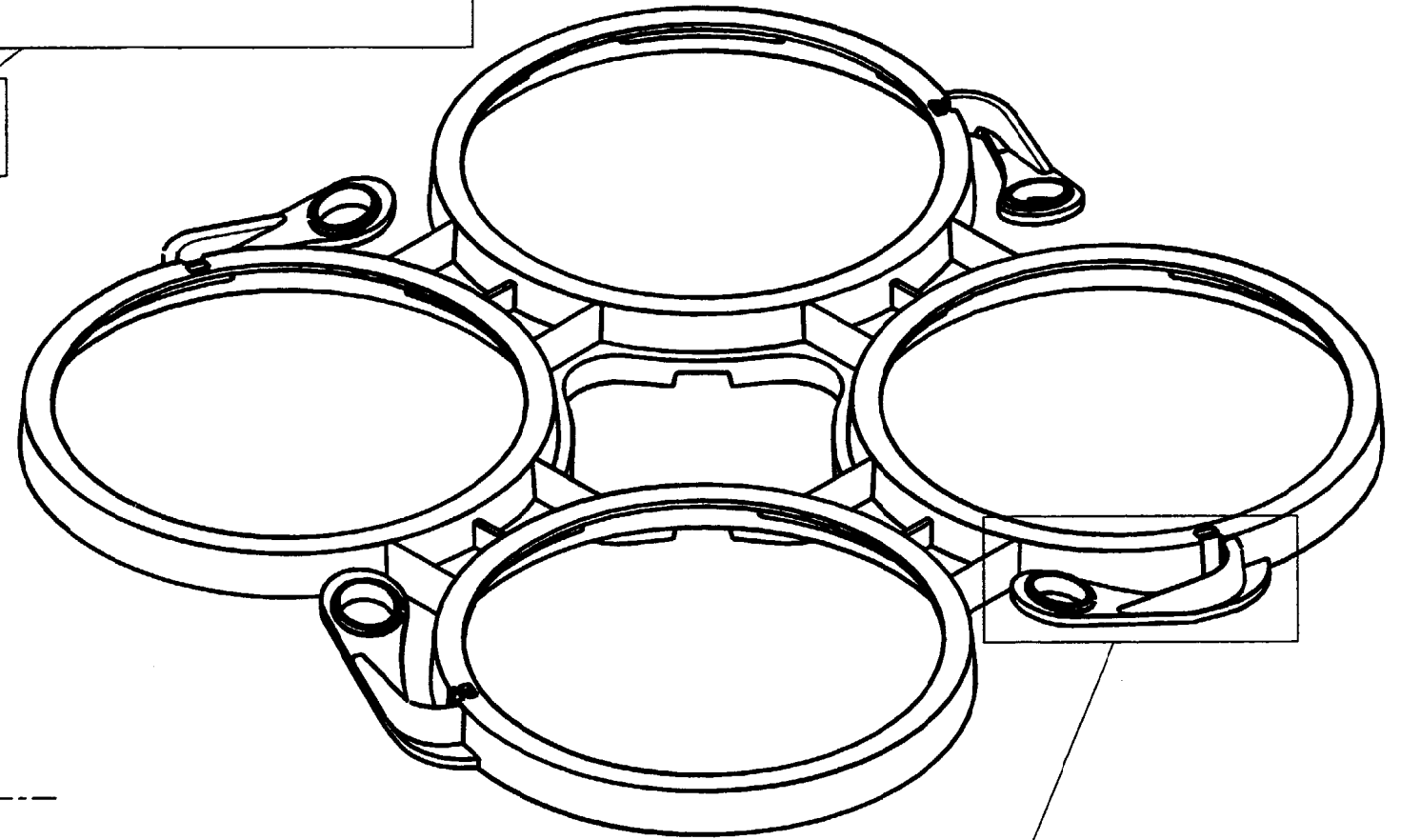
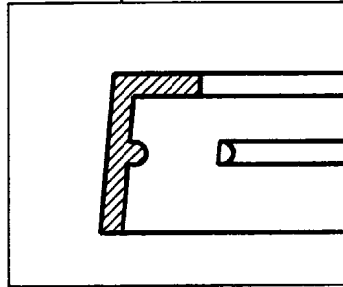
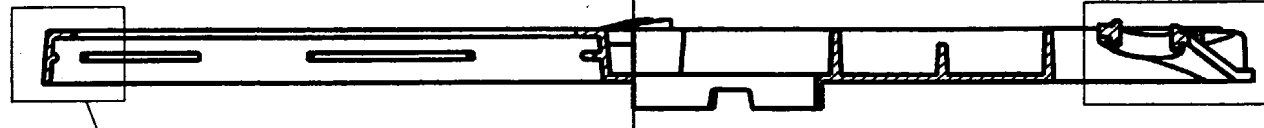
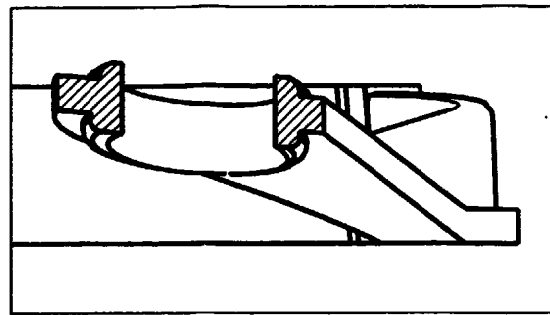
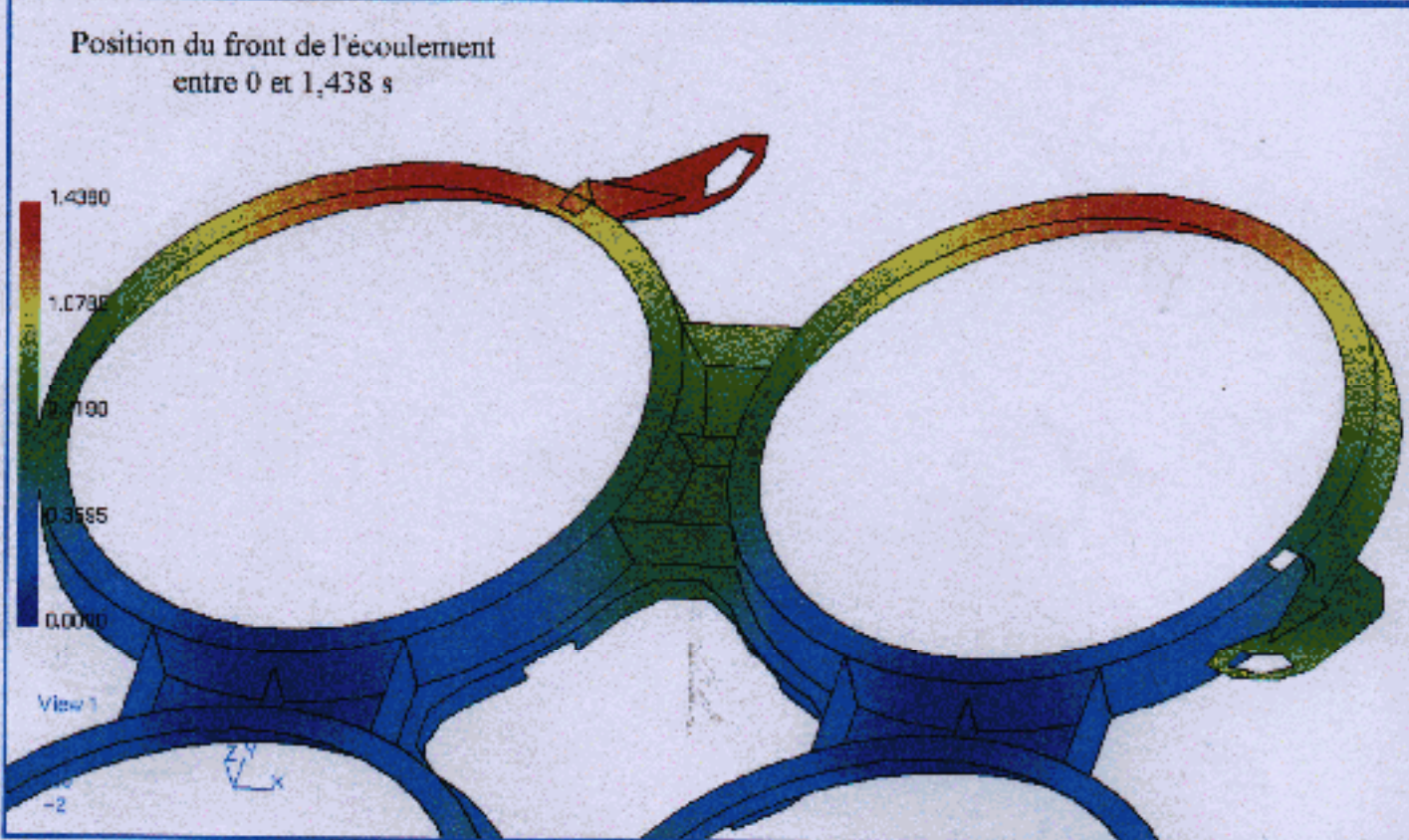
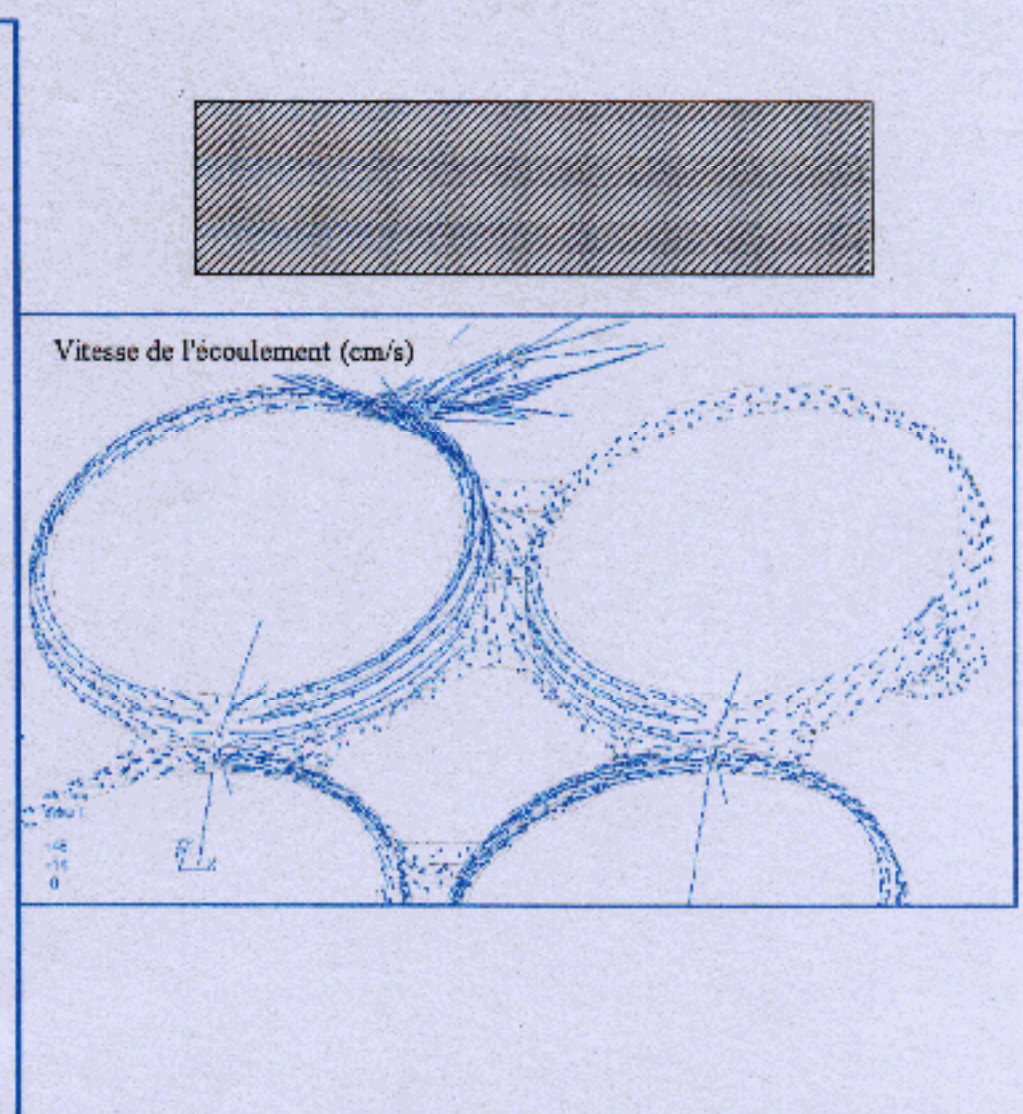
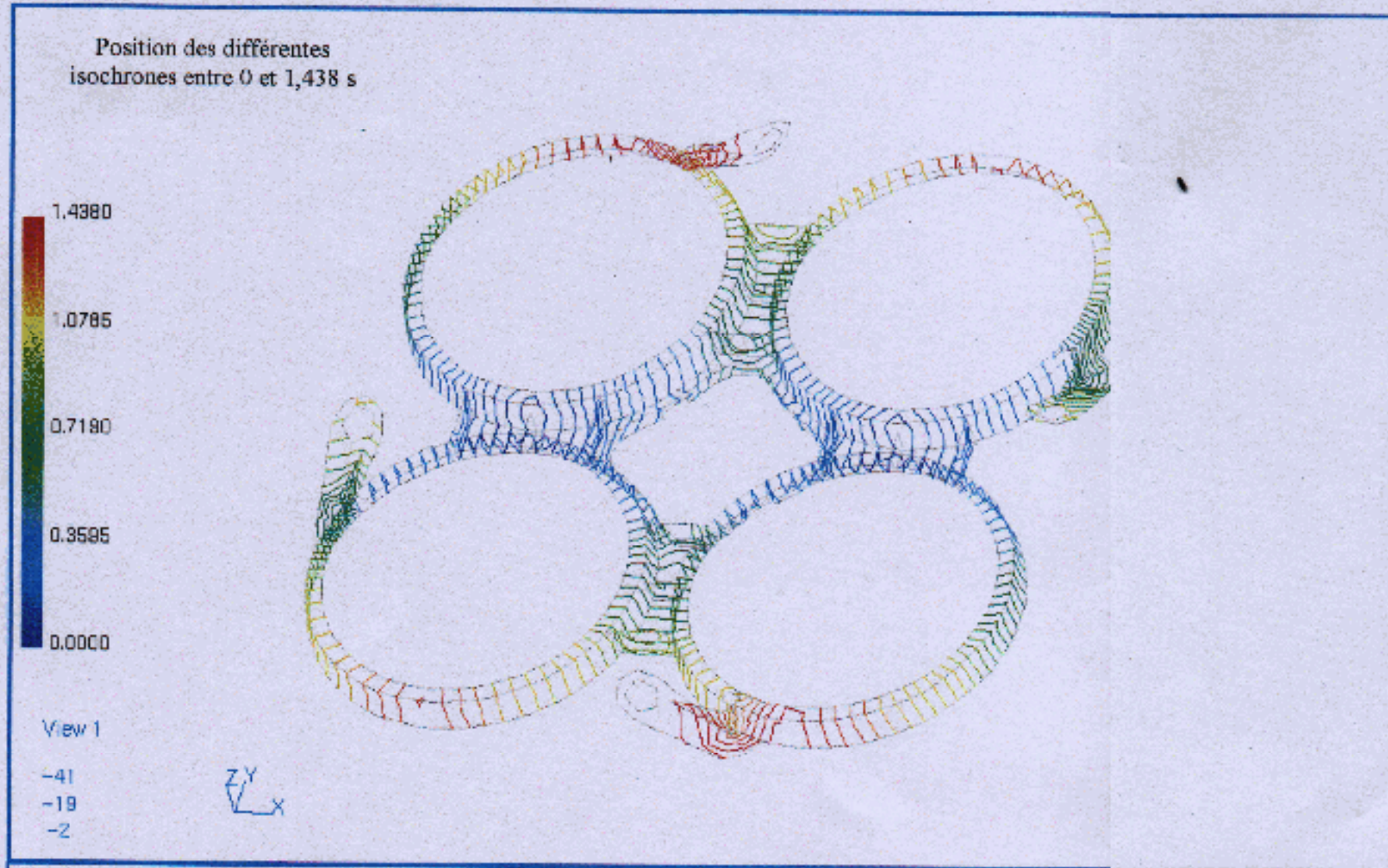


A - A



Echelle: 1:1	Etude des lignes de joint DOCUMENT A RENDRE	Page: 12/15		
A3	LIEN		BTS P&C	00



**Question 1:**  
A l'aide de flèches rouges indiquer les différents chemins d'écoulement  
Positionner en bleu les lignes de soudure

**Question 2 :**  
Que peut-on dire de ces flots et de la position des lignes de soudure ?

Que peut-on en conclure par rapport au cahier des charges fonctionnel , fonctions FC3 et FC4 ?

Quel type de modifications proposez-vous ?



Document suivant en grande taille

Format d'origine A2 594 x 420 mm

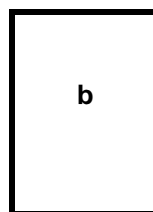
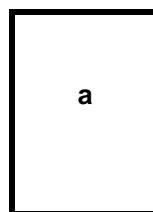
pages suivantes :

Document

Réduit en 1 page A4



Redécoupé en 2 pages A3 successives



permettant la recomposition du document en taille réelle

A - A

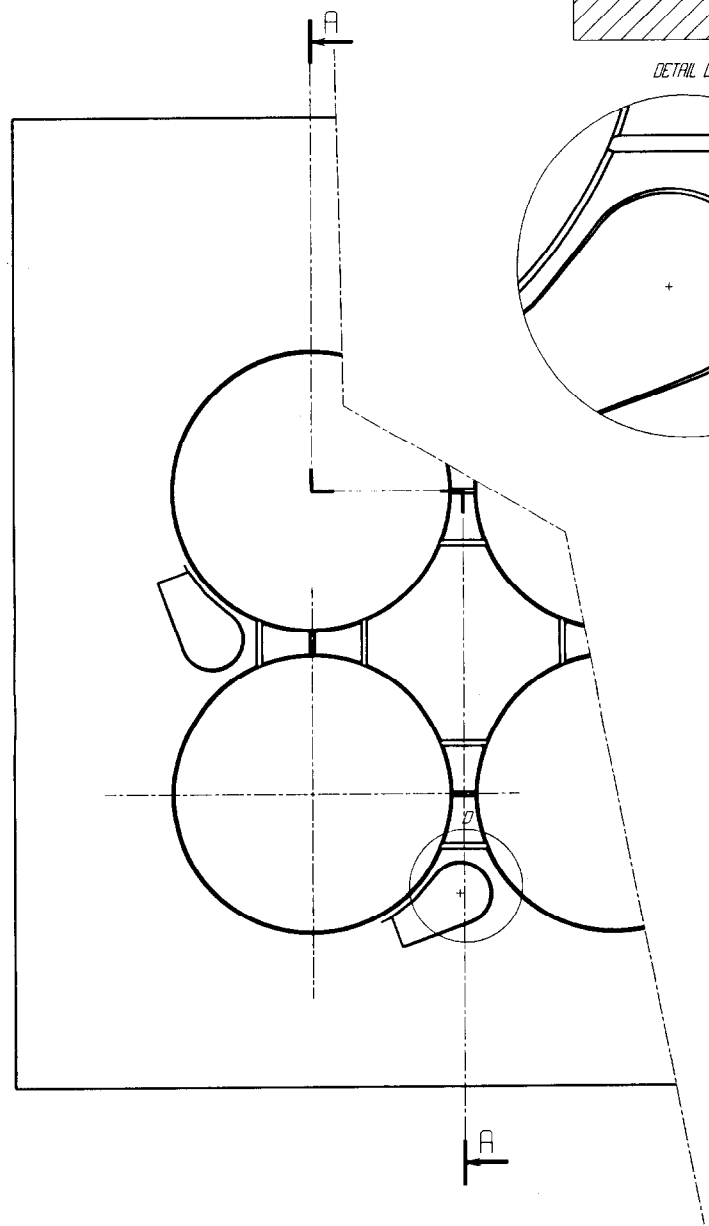
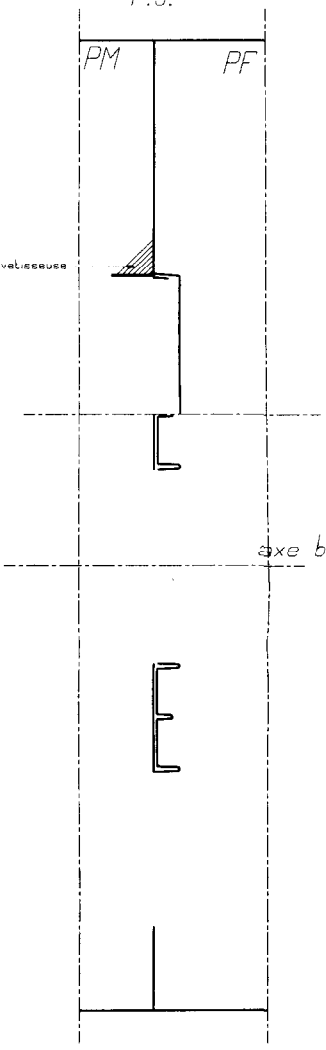
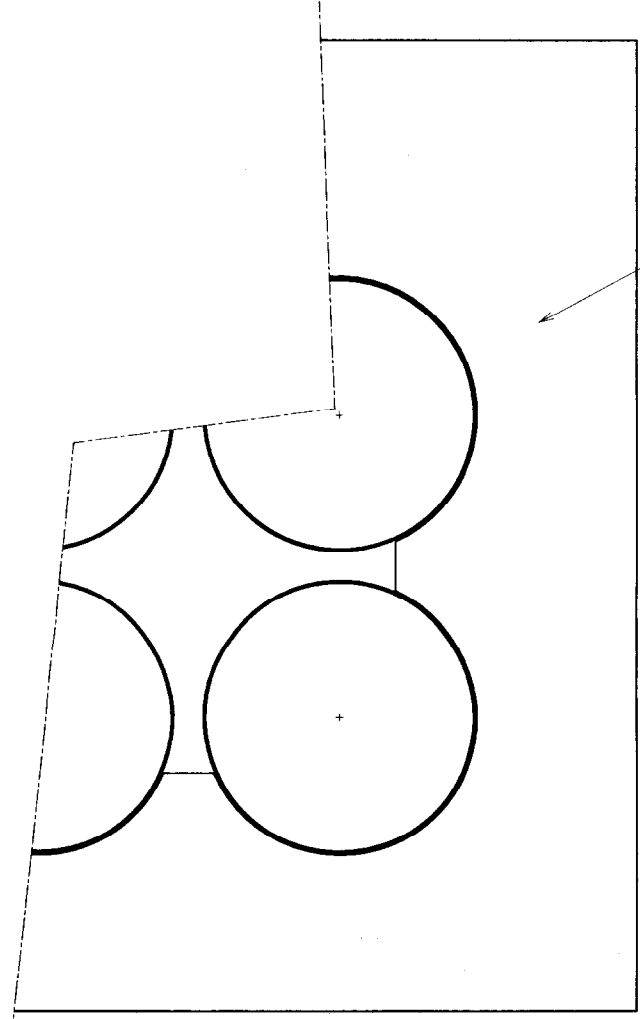
P.J.

PM PF

plaque dovetailée

axe busette

DETAIL D



Echelle:	Formes moulantes et surfaces de joints			
1/1	DOCUMENT A RENDRE	Page :15/16		
A2	LIEN	⊕	BTS P&C	00

A - A

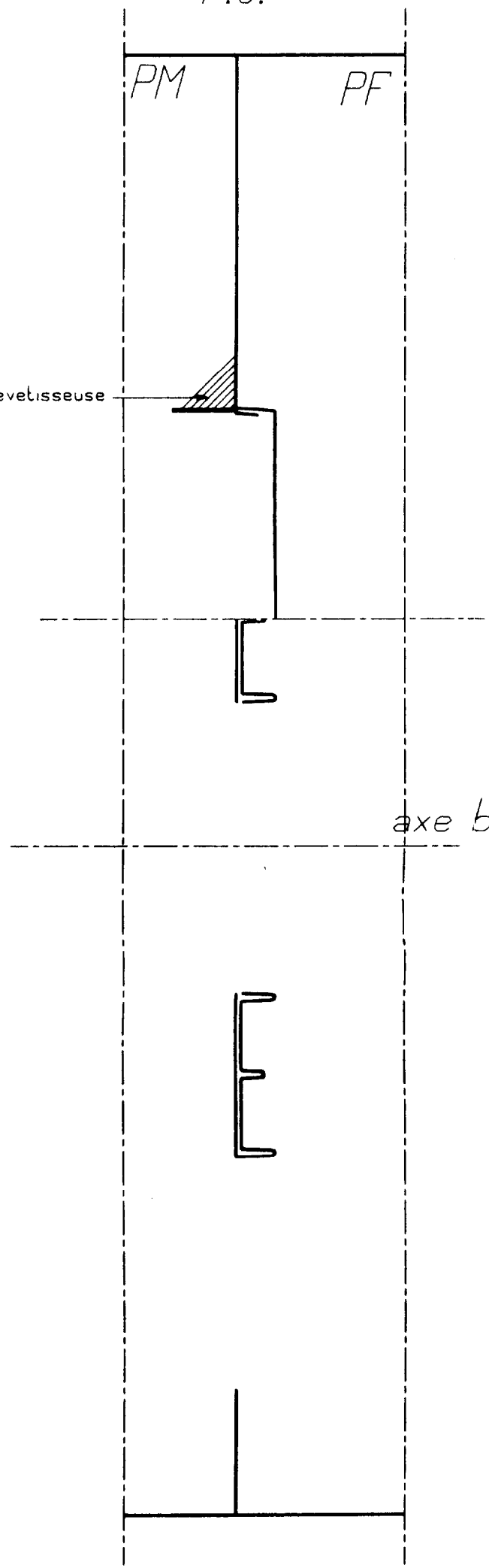
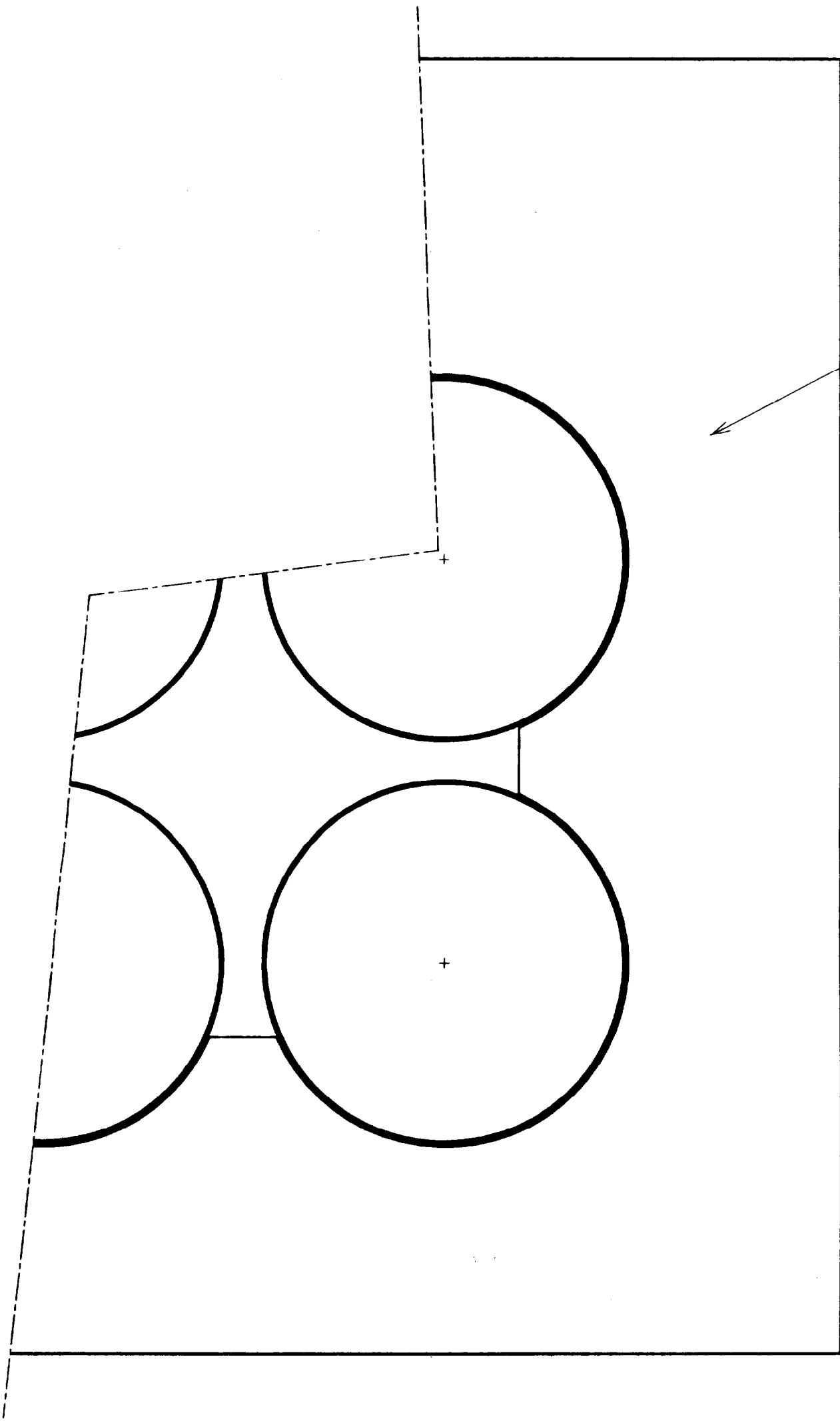
P.J.

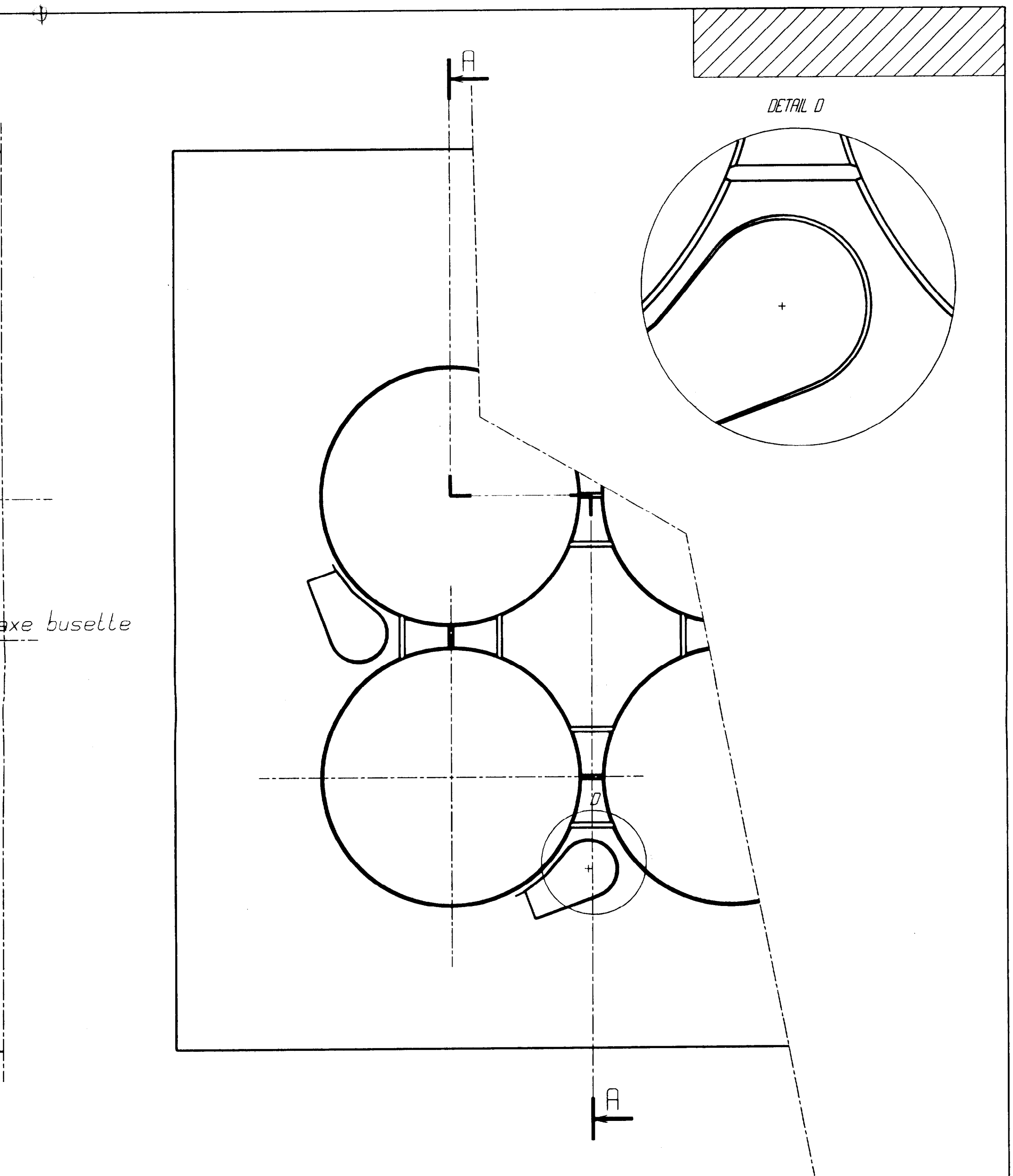
PM

PF

plaque devetisseuse

axe buse





axe busette

Echelle:	Formes moulantes et surfaces de joints			
1:1	DOCUMENT A RENDRE	Page :15/16		
A2	LIEN		BTS P&C	00

