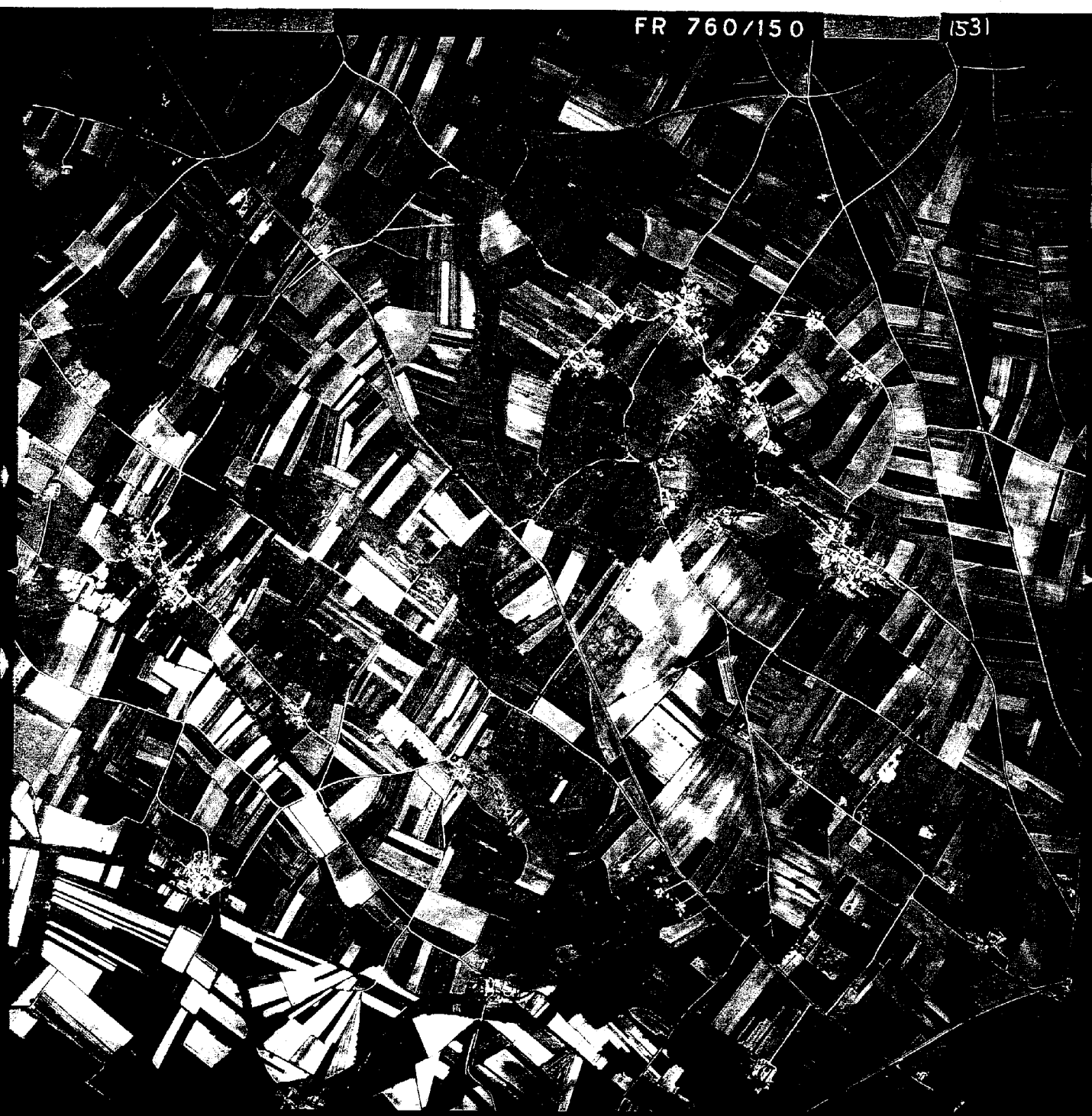


FR 760/150

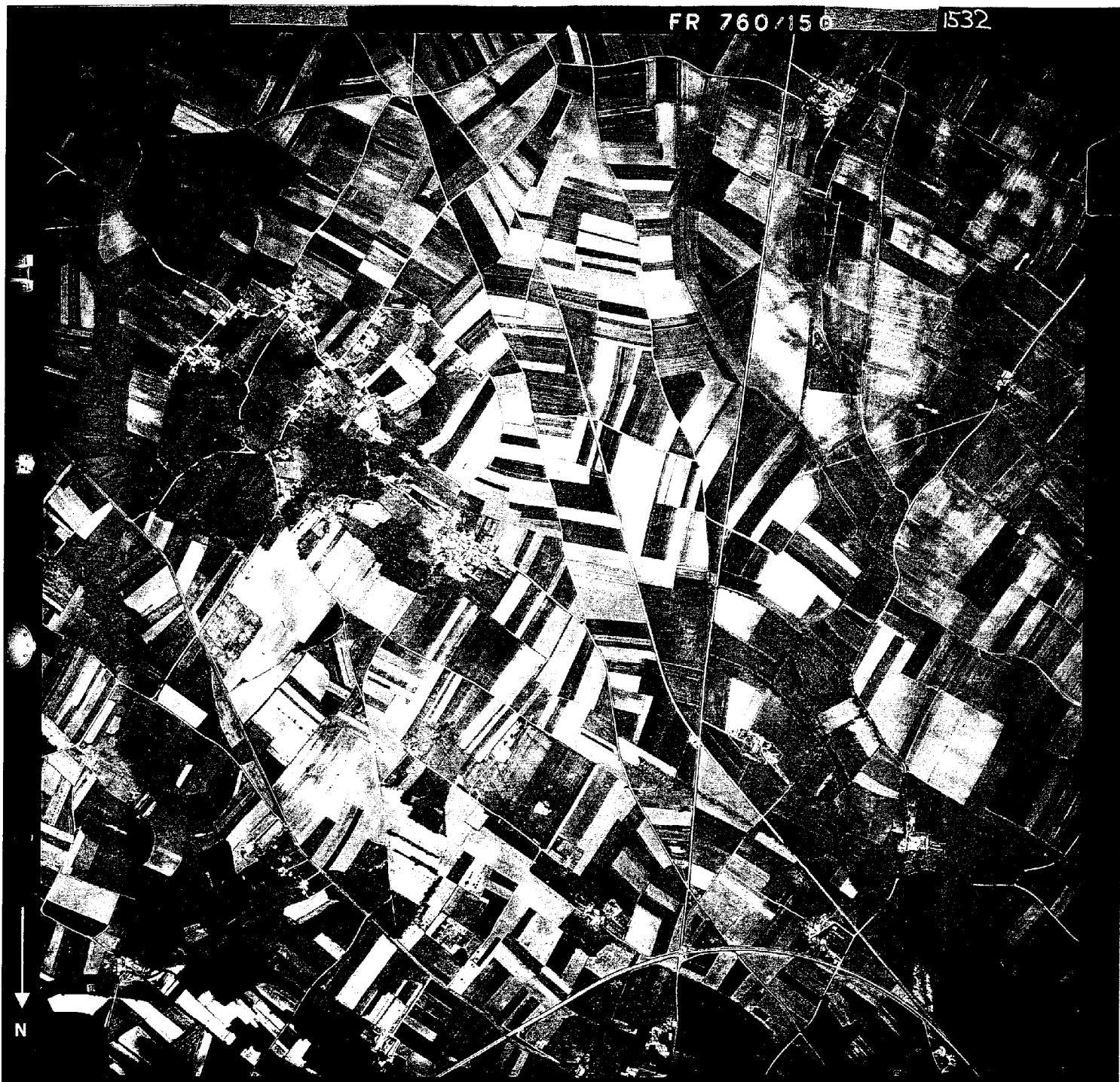
1531

N
↓



FR 760/150

1532

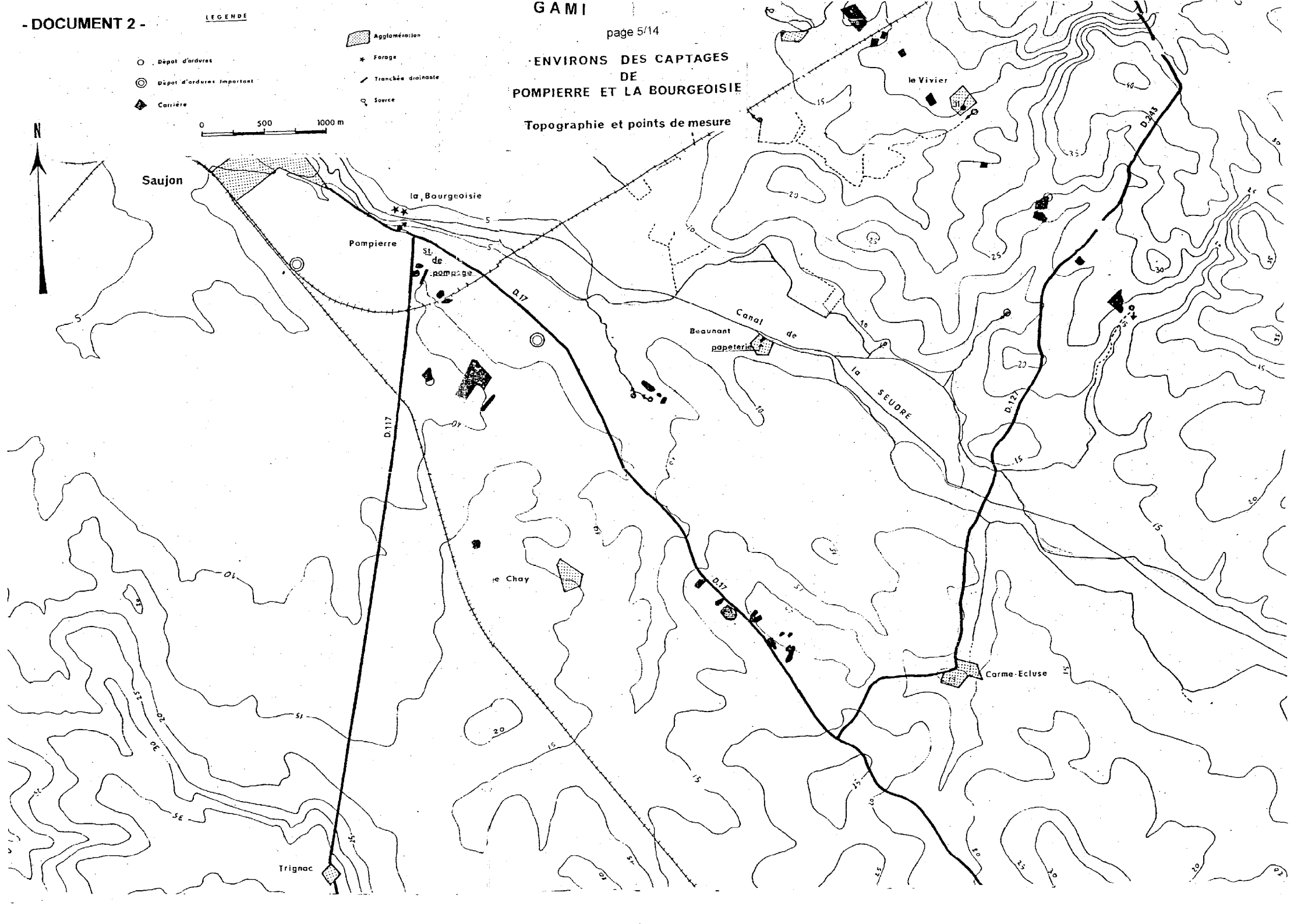
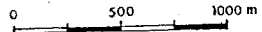


ENVIRONS DES CAPTAGES DE POMPIERRE ET LA BOURGEOISIE

Topographie et points de mesure

- Dépot d'ordures
- ⊙ Dépot d'ordures important
- ◆ Carrière

- Agglomération
- * Forage
- Tranchée drainante
- ⊕ Source



REPORT DES ELEMENTS DE TECTONIQUE RECONNUS SUR LE TERRAIN

