

Modif \_\_\_\_\_

<b>Document ressource 1</b>		<b>VOLET LAMES ARRONDIES</b>		
	Format	A4V	Pce.	volet
	Ech	1 1/5	N° Plan	Mat.



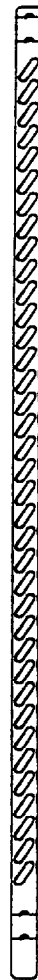
106



118



128



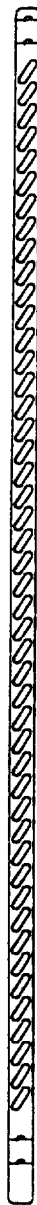
138



148



158



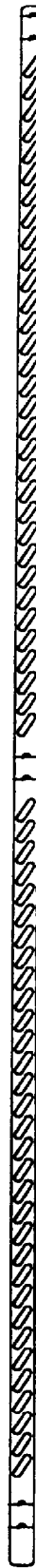
168



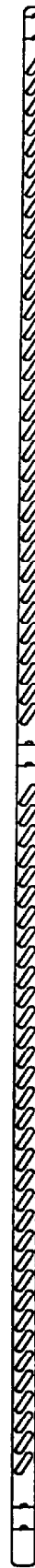
203



218



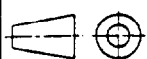
228



Modif

Document ressource 3

# VOLET LAMES ARRONDIES



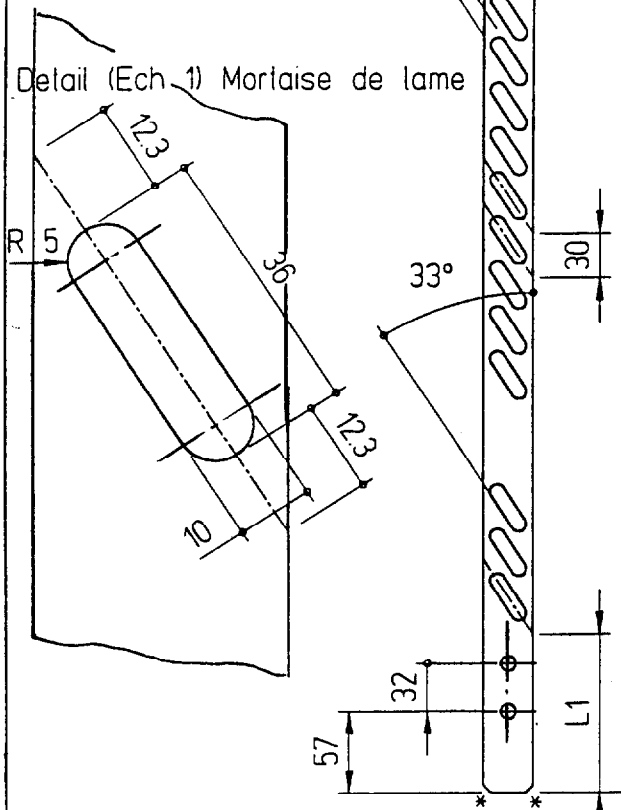
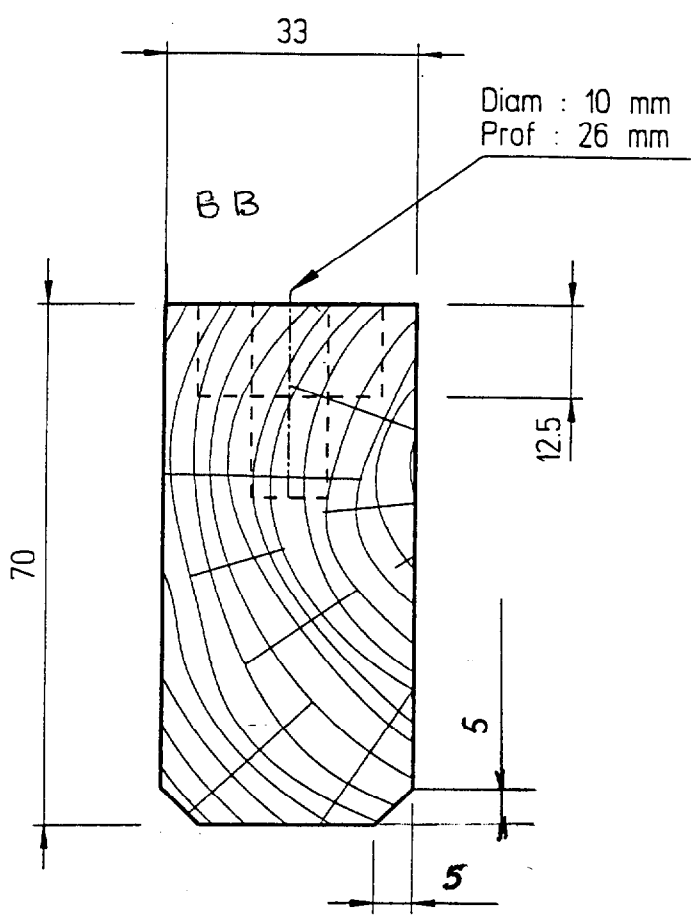
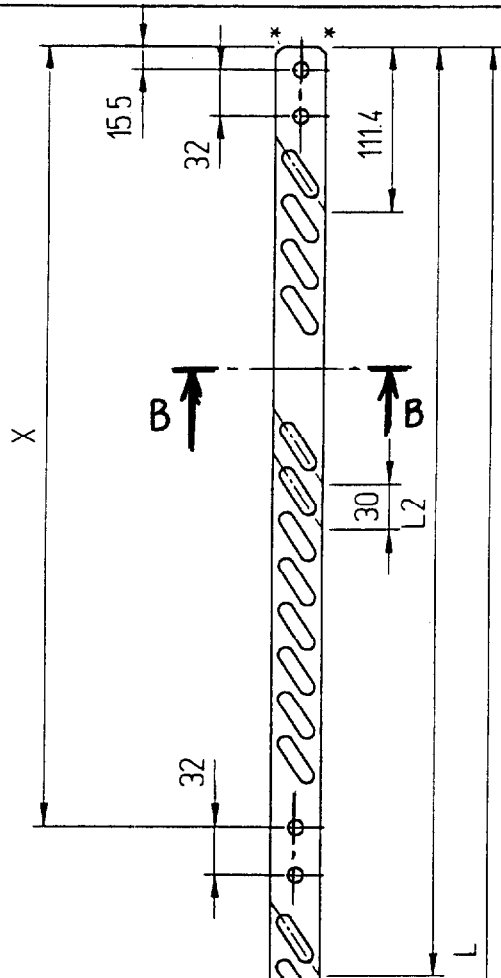
Format A4V

Pce violet

N° Plan

Mat.

Ech 1/10

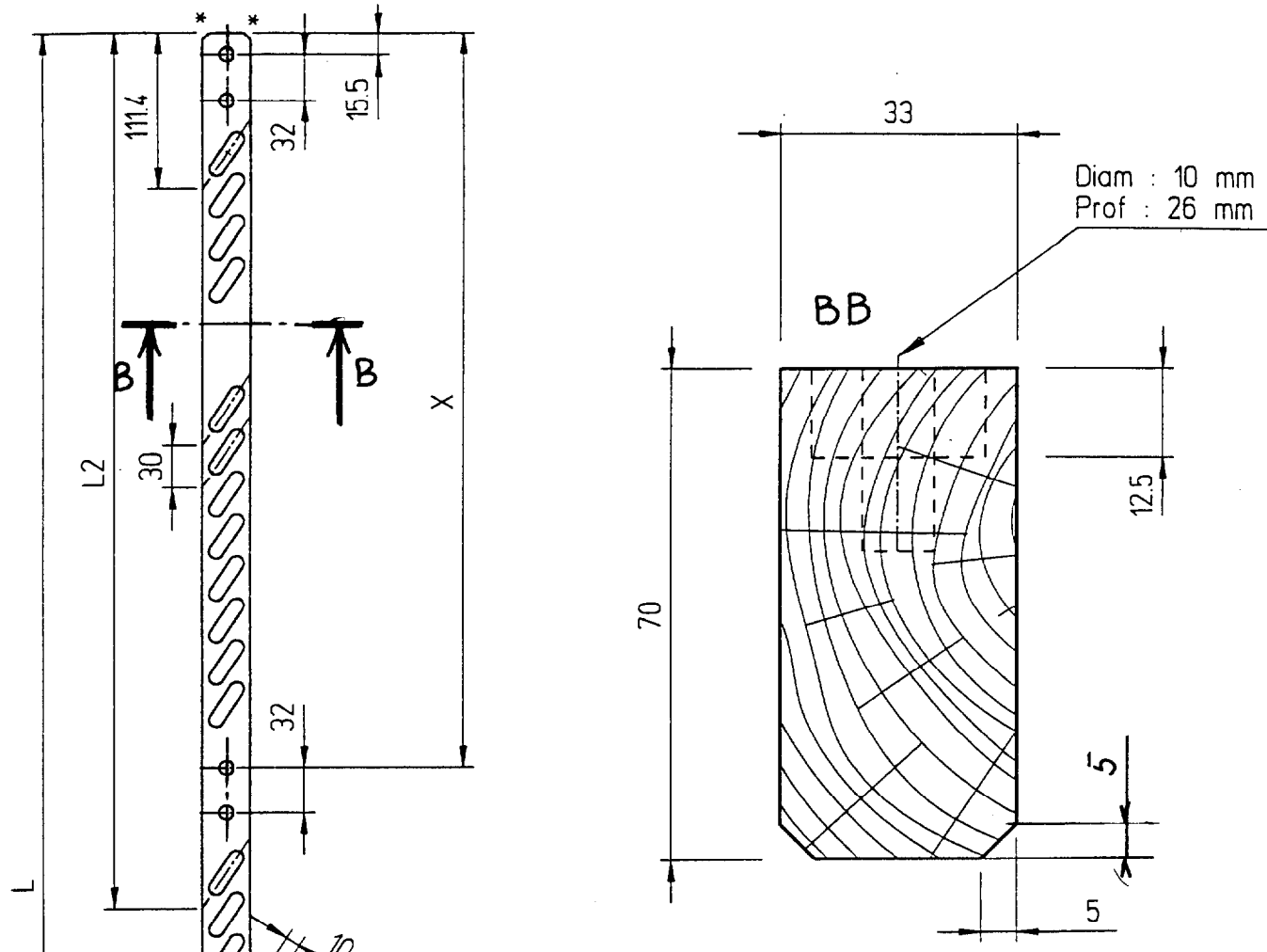


H	L	nb H	nb B	X	L1	L2
<b>106</b>	1088	30			106.59	
<b>118</b>	1208	34			106.59	
<b>128</b>	1308	37			116.59	
<b>138</b>	1408	40			126.59	
<b>148</b>	1508	44			106.59	
<b>158</b>	1608	47			116.59	
<b>168</b>	1708	50			126.59	
<b>203</b>	2058	29	30	971	116.59	1071.41
<b>218</b>	2208	32	32	1061	116.59	1161.41
<b>228</b>	2308	33	34	1091	126.59	1191.41

\* Les 2 extrémités du battant sont chanfreinées à 5\*45°

Modif

<b>Document ressource 4</b>		<b>BATTANT DROIT VOILET LAMES ARRONDIES</b>			
	Format A4V	Pce. volet	N° Plan		Mat.
	Ech. 1 1/5				



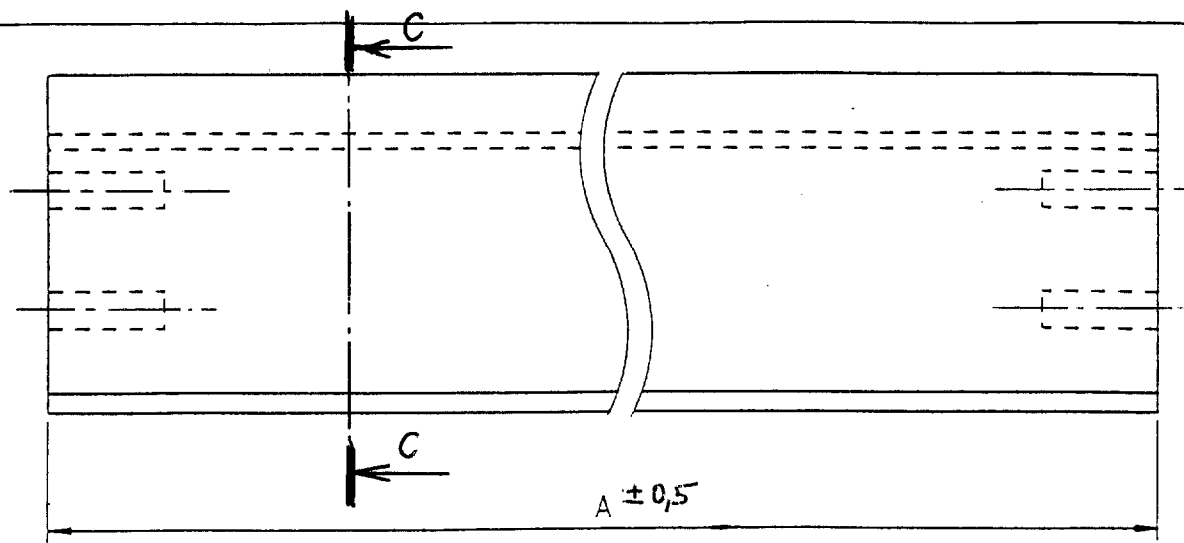
Detail (Ech 1) Mortaise de lame

H	L	nb H	nb B	X	L1	L2
<b>106</b>	1088	30			106.59	
<b>118</b>	1208	34			106.59	
<b>128</b>	1308	37			116.59	
<b>138</b>	1408	40			126.59	
<b>148</b>	1508	44			106.59	
<b>158</b>	1608	47			116.59	
<b>168</b>	1708	50			126.59	
<b>203</b>	2058	29	30	971	116.59	1071.41
<b>218</b>	2208	32	32	1061	116.59	1161.41
<b>228</b>	2308	33	34	1091	126.59	1191.41

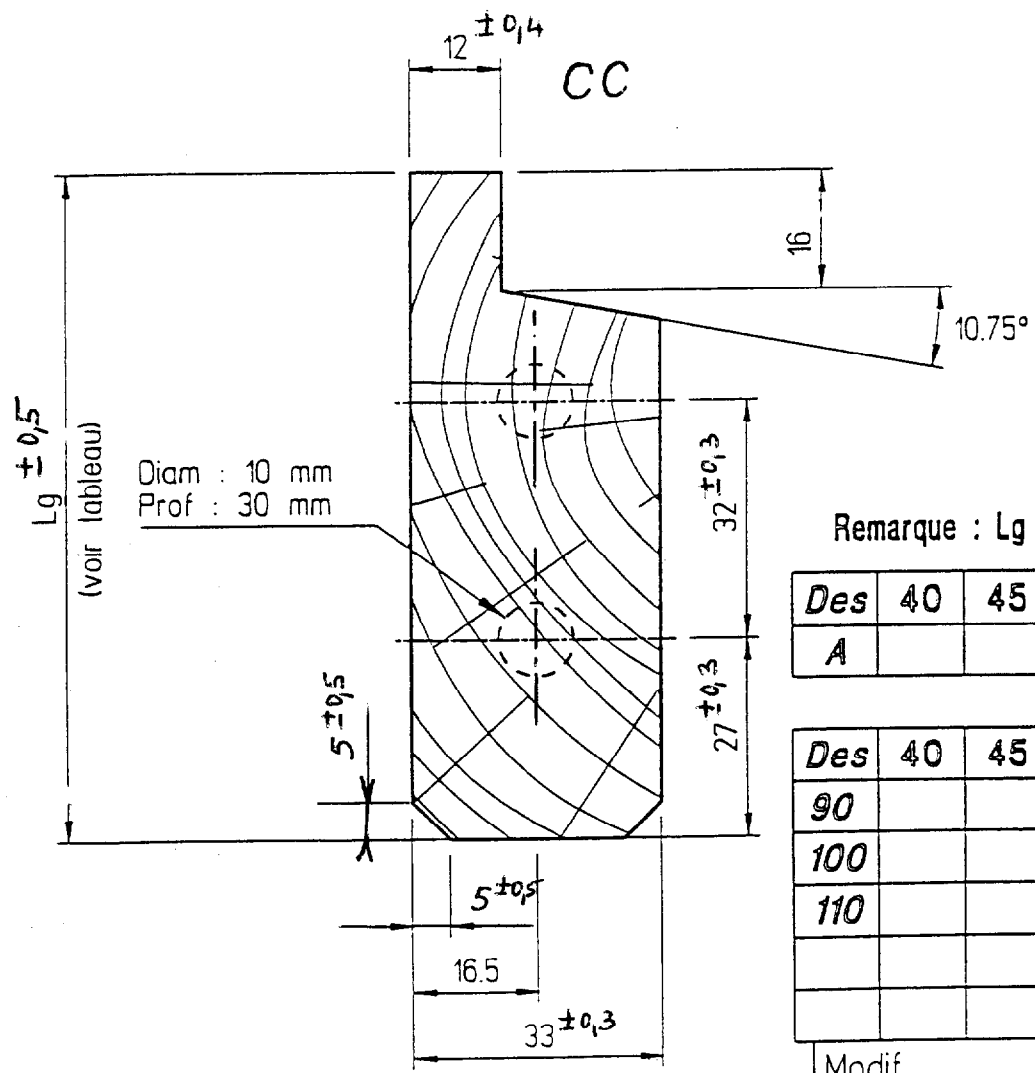
\* Les 2 extrémités du battant sont chanfreinées à 5x45°

Modif

<b>Document ressource 5</b>		<b>BATTANT GAUCHE VOLET LAMES ARRONDIES</b>				
	Format	A4V	Pce.	volet	N° Plan	Mat.
	Ech.	1 1/5				



H	L	Lg
106	1088	90
118	1208	90
128	1308	100
138	1408	110
148	1508	90
158	1608	100
168	1708	110
203	2058	100
218	2208	100
228	2308	110



Remarque : Lg des traverses INTER = 90 mm

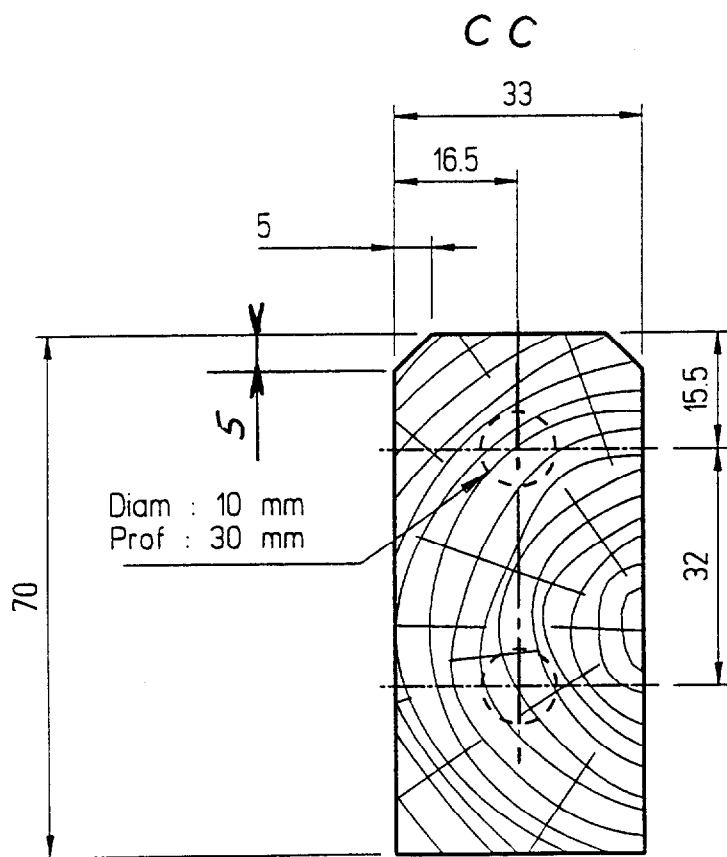
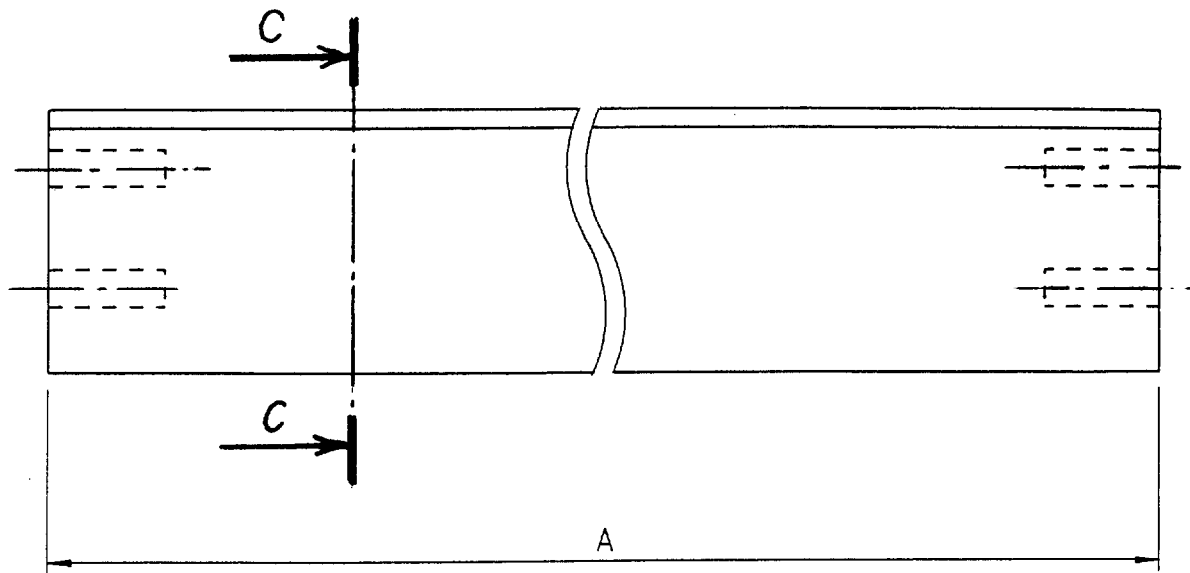
Des	40	45	50	55	60	70	80
A			360		460	560	660

Des	40	45	50	55	60	70	
90			X		X		
100			X		X	X	X
110			X		X	X	

Modif

Document ressource 6 TRVERSE BASSE ET INTER VOLET LAMES ARRONDIES

	Format	A4V	Pce.	volet	N° Plan	Mat.
	Ech.	1 / 2				

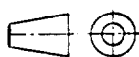


Des	40	45	50	55	60	70	80
A			360		460	560	660

Modif

Document ressource 7

TRAVERSE HAUTE VOLET LAMES ARRONDIES



Format A4V

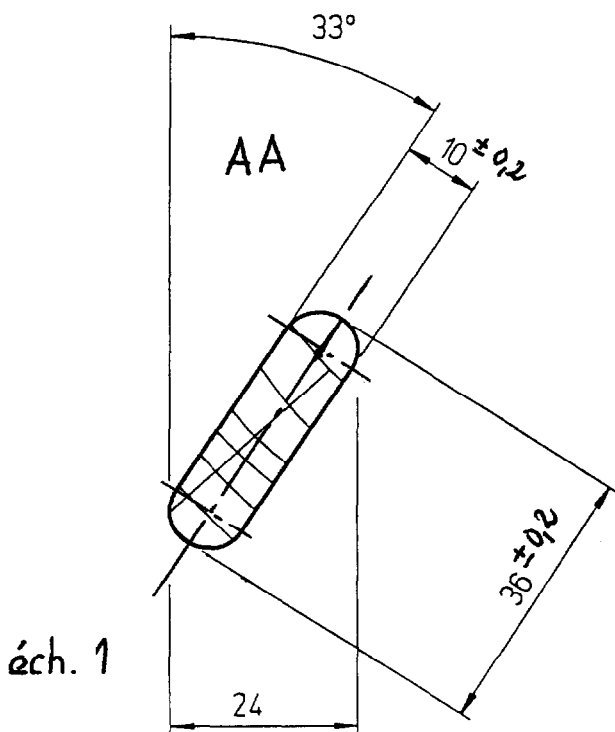
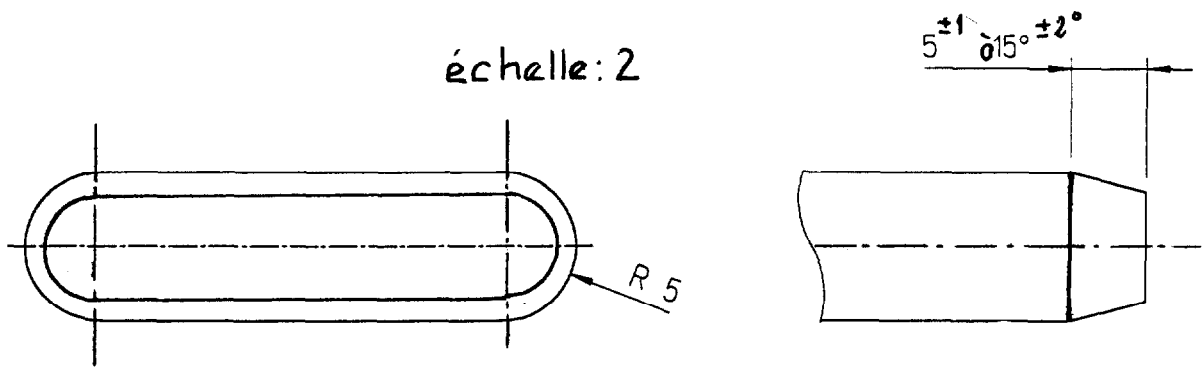
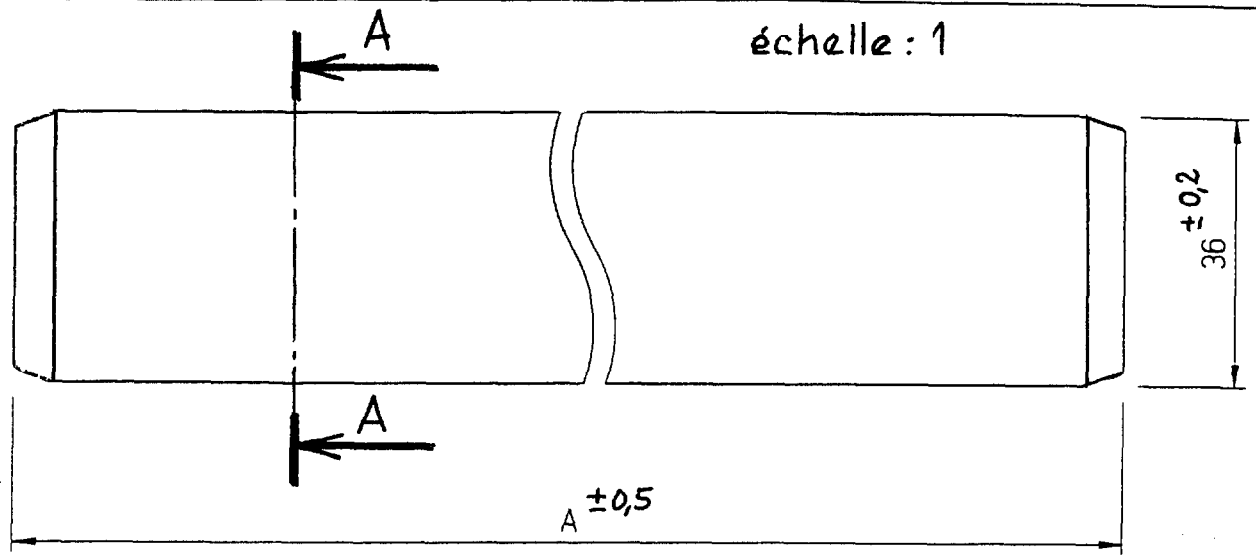
Pce. volet

N° Plan

Mat.

Ech 1 1/2

PBABESD - PBABESF - PBABESP

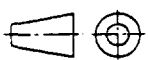


Des	40	45	50	55	60	70	80
A			380		480	580	680

Modif

Document ressource 8

LAME VOLET LAMES ARRONDIES



Format A4V

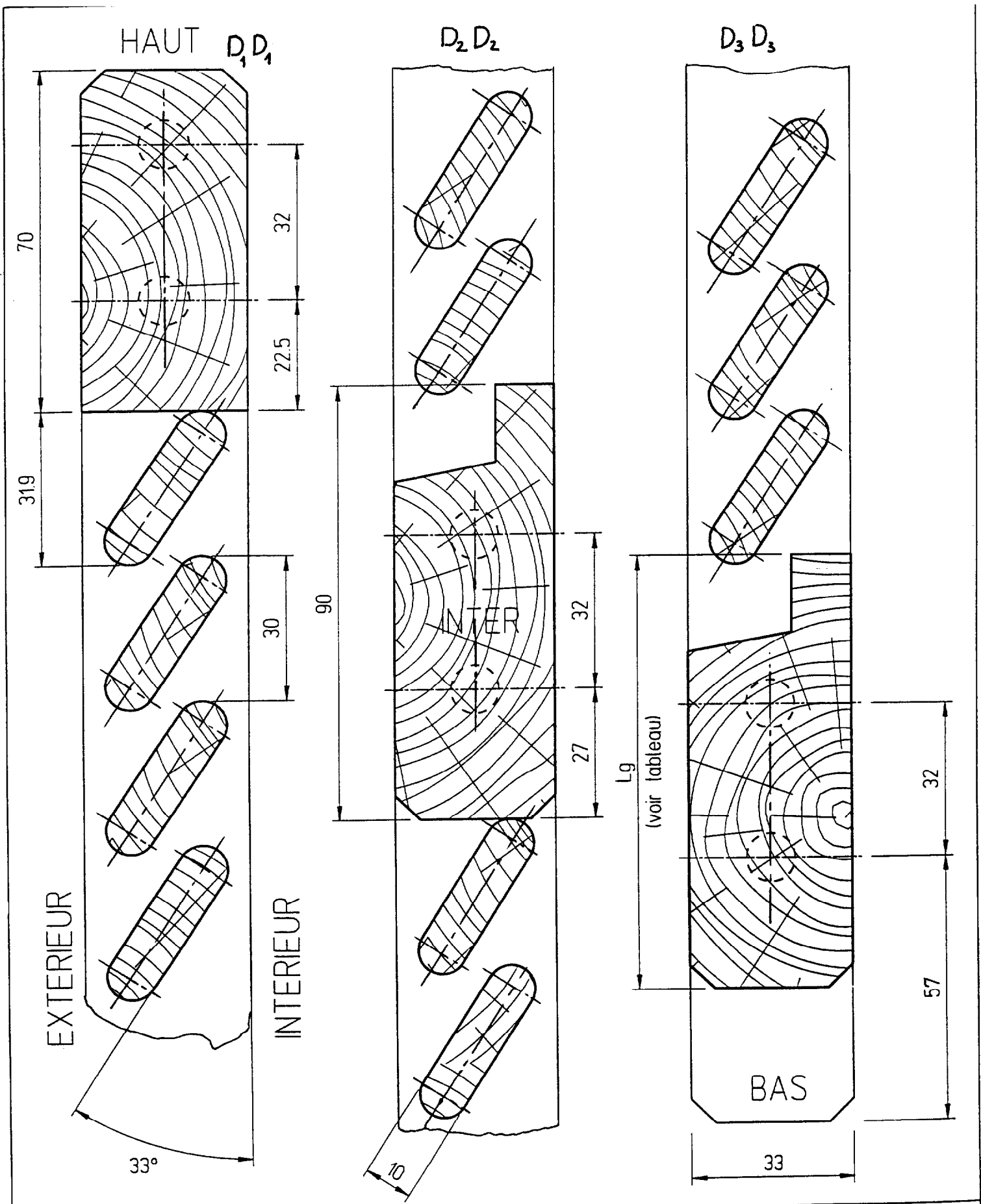
Pce. volet

N° Plan

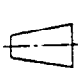

Mat.

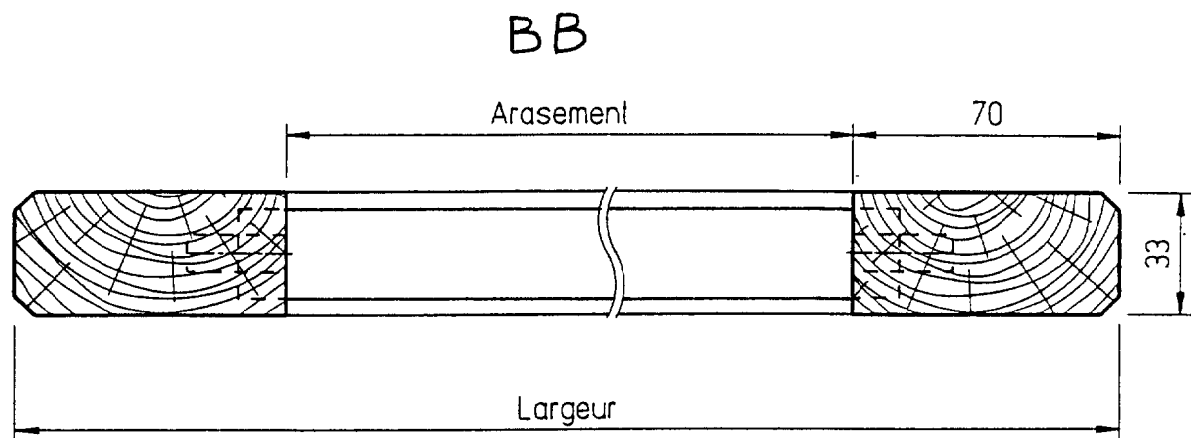
Ech. 1 2





Modif

Document ressource 9		VOLET LAMES ARRONDIES		
 	Format A4V	Pce. volet	N° Plan	Mat.
	Ech. 1			



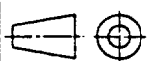
Des	40	45	50	55	60	70	80
98							
106			0120040		120060		
118			0120120		0120140		
128			0120180		0120160	0120200	
138			0120240		0120260	0120280	
148			0120360		0120380		
158			0120400		0120420		
168			0120460		0120480		
178							
193							
203			0120580		0120600		
218			0120640		0120660	0120680	0120700
228			0120760		0120780	0120800	

Des	40	45	50	55	60	70	80
Largeur			500		600	700	800
Arasement			360		460	560	660

Modif

Document ressource 10

VOLET LAMES ARRONDIES



Format A4V

Pce volet

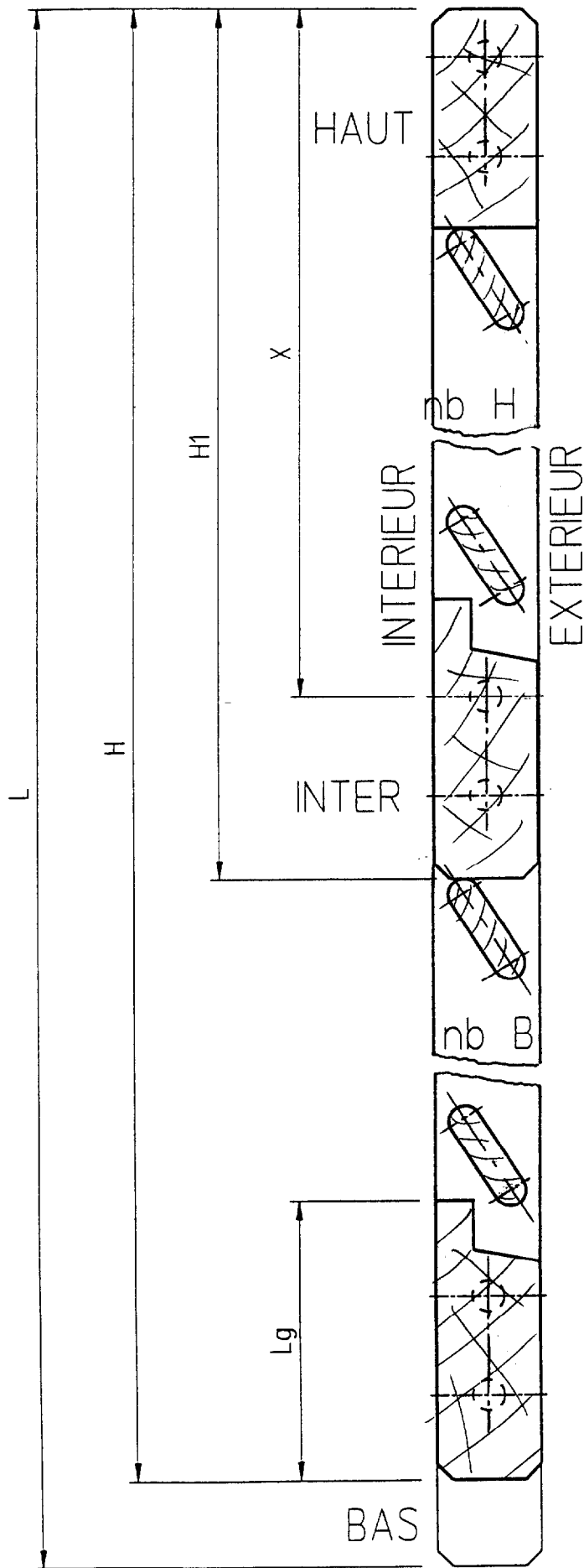
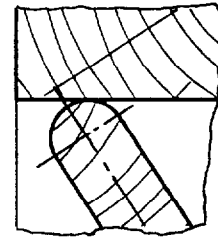
N° Plan

Mat.

Ech. 1/2

PBABESD - PBABESF - PBABESP

Détail (Ech 2) du recouvrement Traverse/Lame



Des	40	45	50	55	60	70	80
98							
106			0120040		120060		
118			0120120		0120140		
128			0120180		0120160	0120200	
138			0120240		0120260	0120280	
148			0120360		0120380		
158			0120400		0120420		
168			0120460		0120480		
178							
193							
203			0120580		0120600		
218			0120640		0120660	0120680	0120700
228			0120760		0120780	0120800	

H	L	Lg	nb H	nb B	X	H1
106	1088	90	30			
118	1208	90	34			
128	1308	100	37			
138	1408	110	40			
148	1508	90	44			
158	1608	100	47			
168	1708	110	50			
203	2058	100	29	30	971	1030
218	2208	100	32	32	1061	1120
228	2308	110	33	34	1091	1150
Modif						

Document ressource 11

VOLET LAMES ARRONDIES



Format A4V  
Ech. 1/2

Pce volet

N° Plan

Mat.