

**BREVET DE TECHNICIEN SUPERIEUR**

**INDUSTRIE DU CUIR**

Option : Tannerie-Mégisserie .

Epreuve : Dessin Technique et Technologie de Construction

Temps : 5 heures

Coefficient : 2

**SESSION 2001**

**Dossier Technique**

**Document DT1:** page 2 / 11.

Dessin d'ensemble des deux attaches( Supérieure et inférieure ).

**Document DT2:** page: 3 / 11.

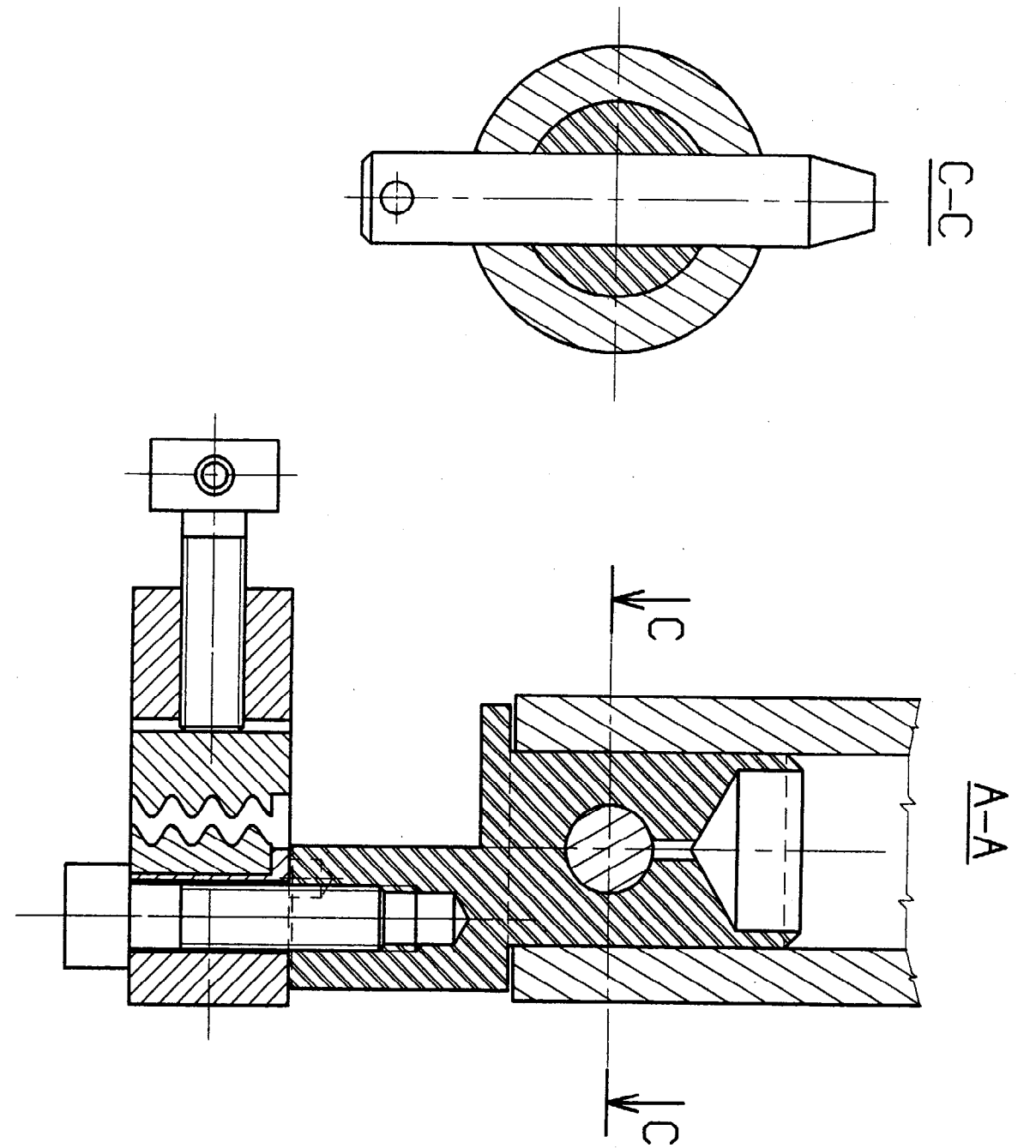
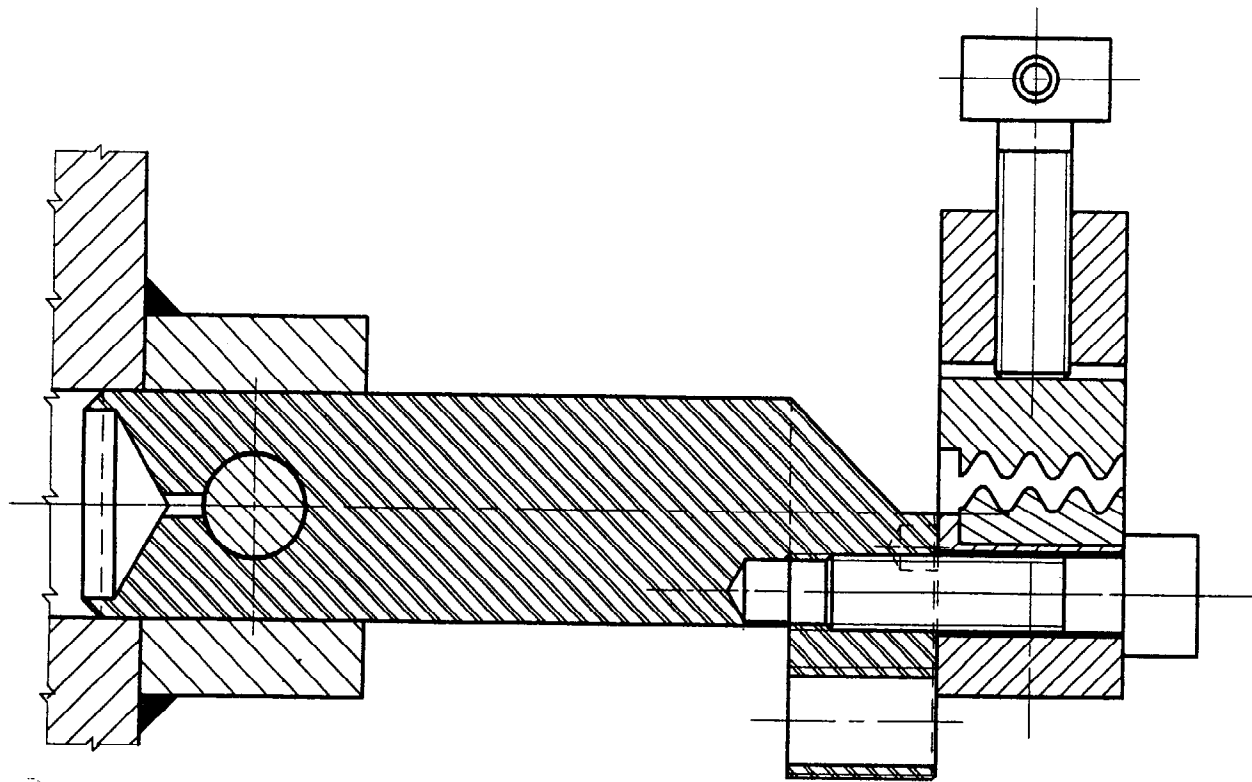
Dessin d'ensemble de l'attache inférieure.

**Document DT3:** page: 4 / 11.



Dessins de définition des pièces qui composent l'attache inférieure.

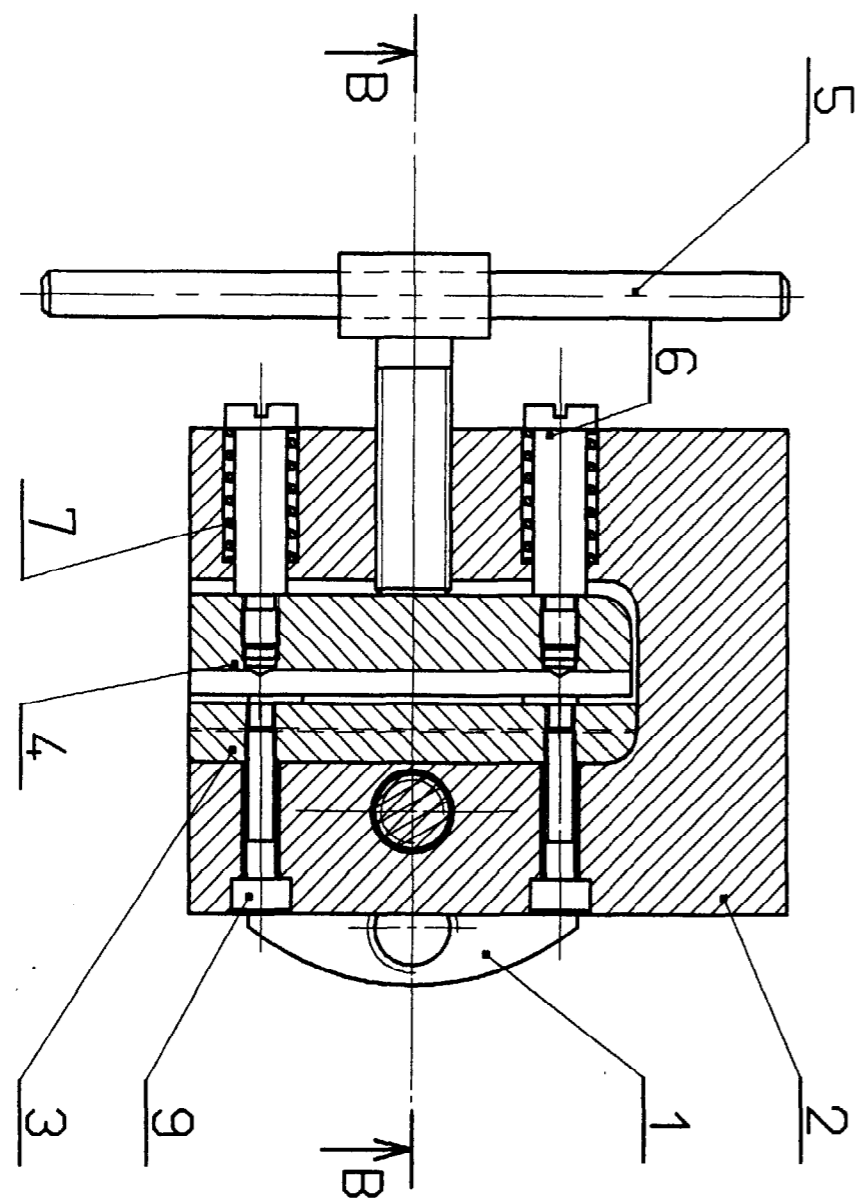
**Document DT4:** page: 5 / 11.

Les liaisons mécaniques.

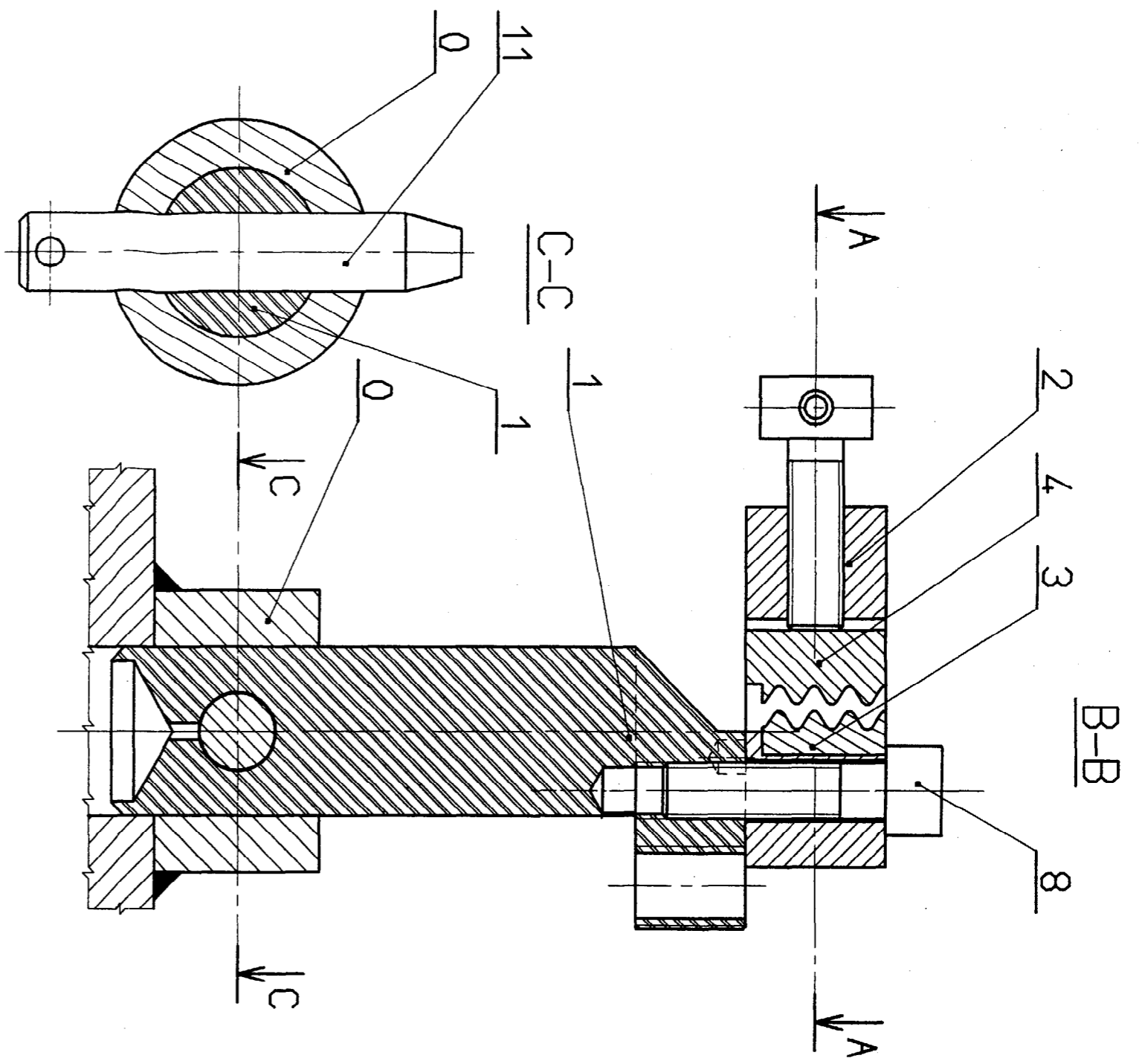


Document DT1

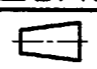
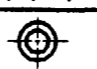
Ech. 1:1	BREVET DE TECHNICIEN SUPERIEUR	Session 2001
 	Industrie du Culr. INDEST	Option: Tannerie-Méglisserie
Durée: 5h	Epreuve: Dessin Technique et Technologie de Construction	
Coef. : 2	ATTACHES Supérieure et Inférieure	
Format: A3V		
		Page: 2/11

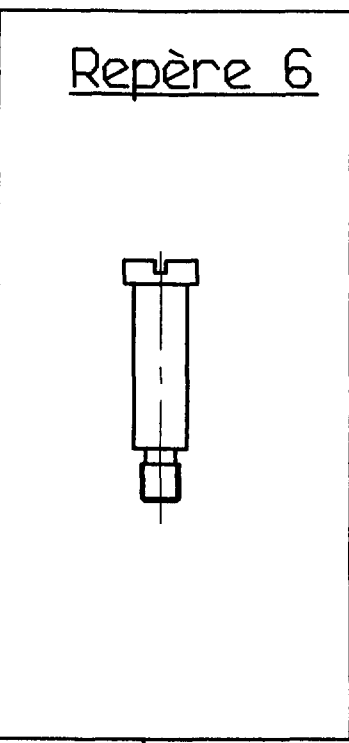
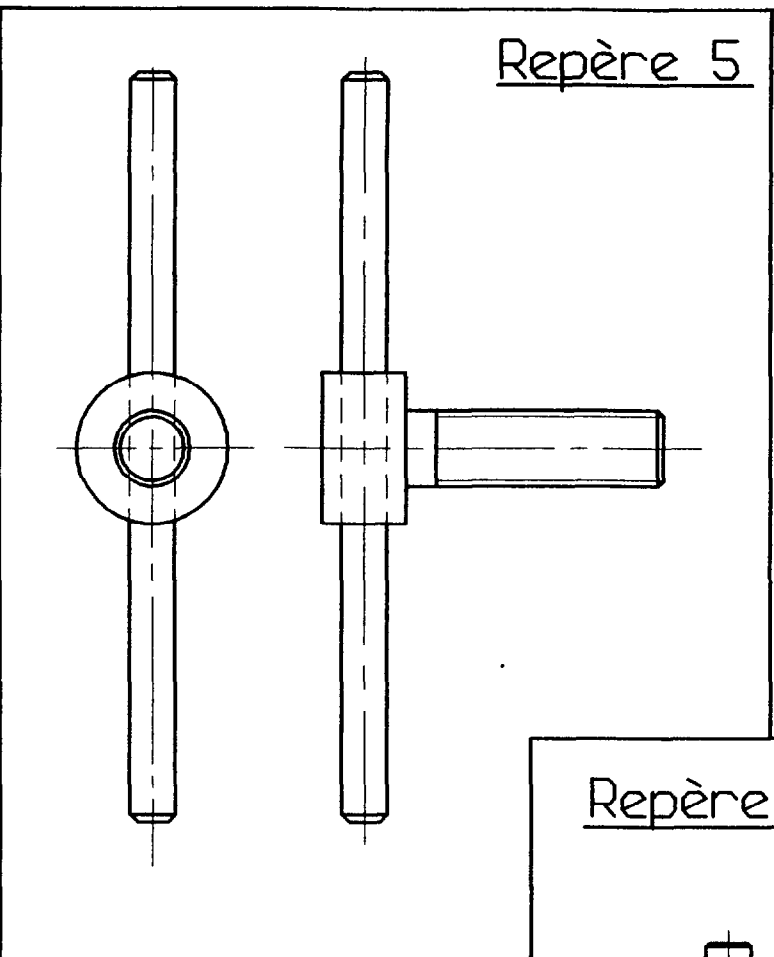
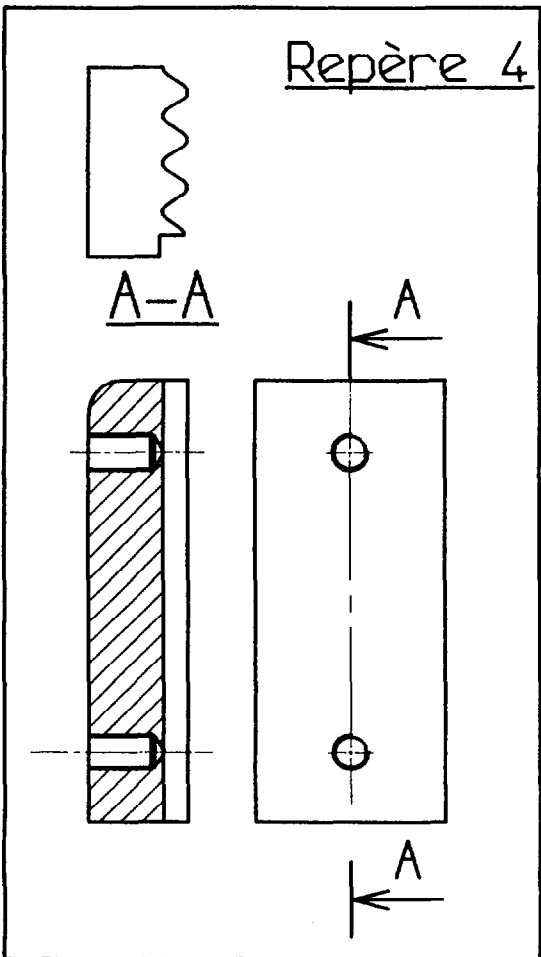


A-A

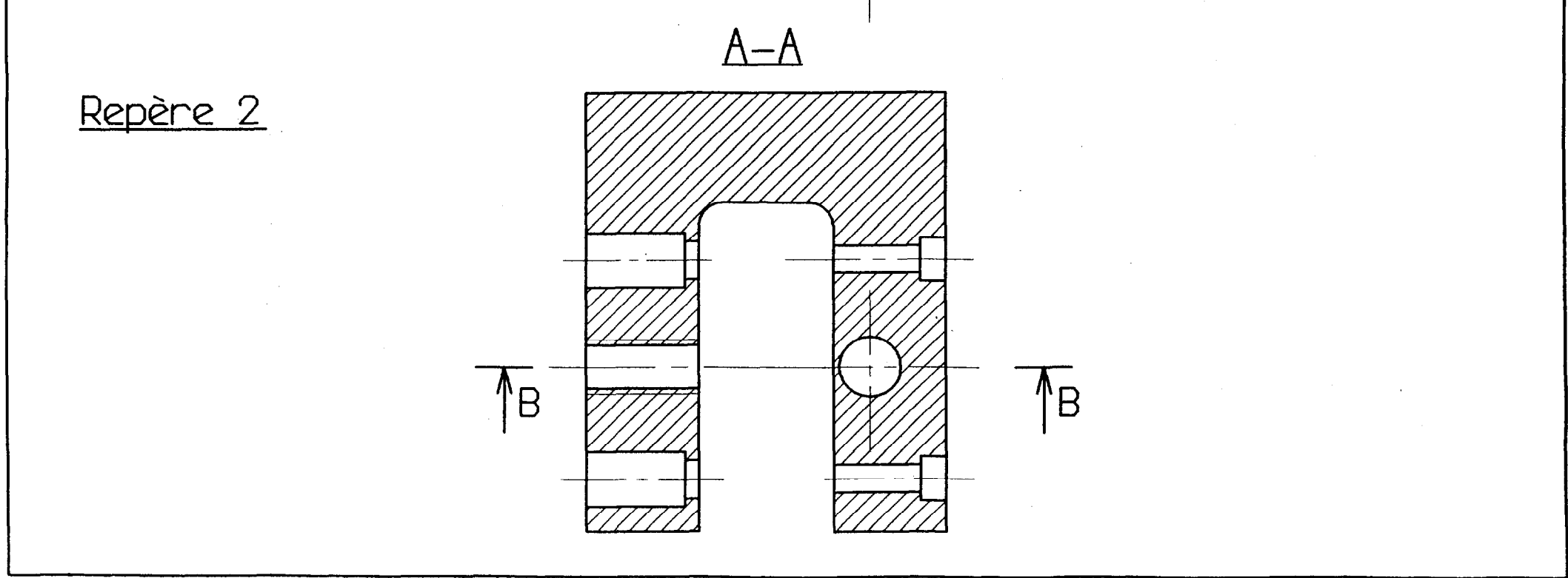
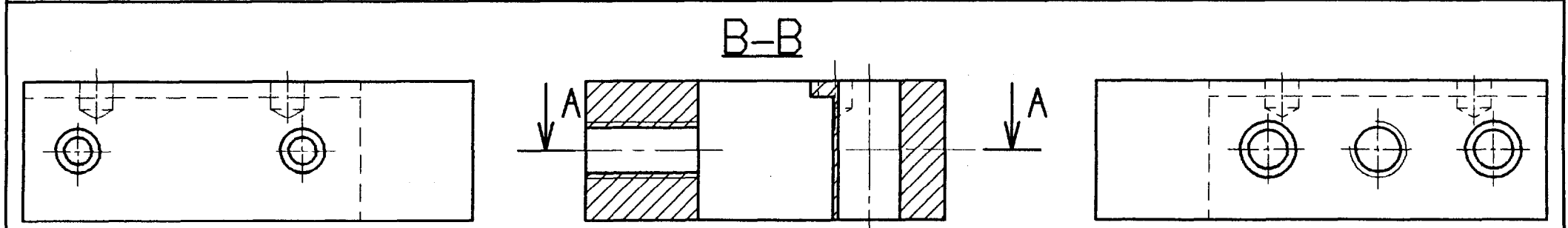
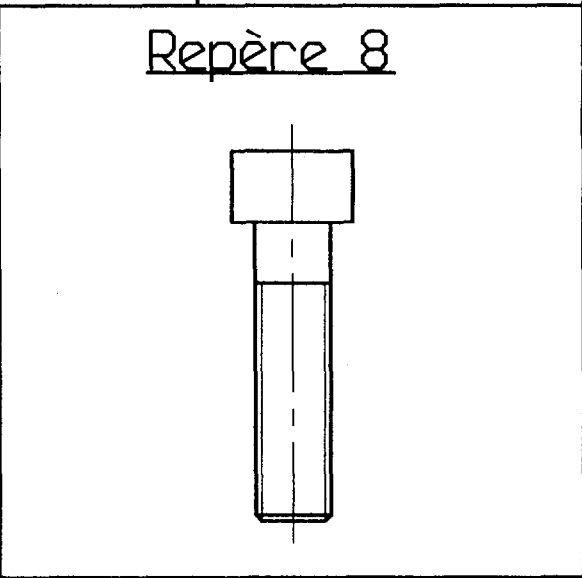
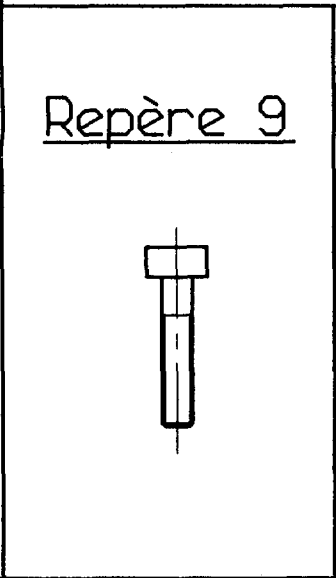
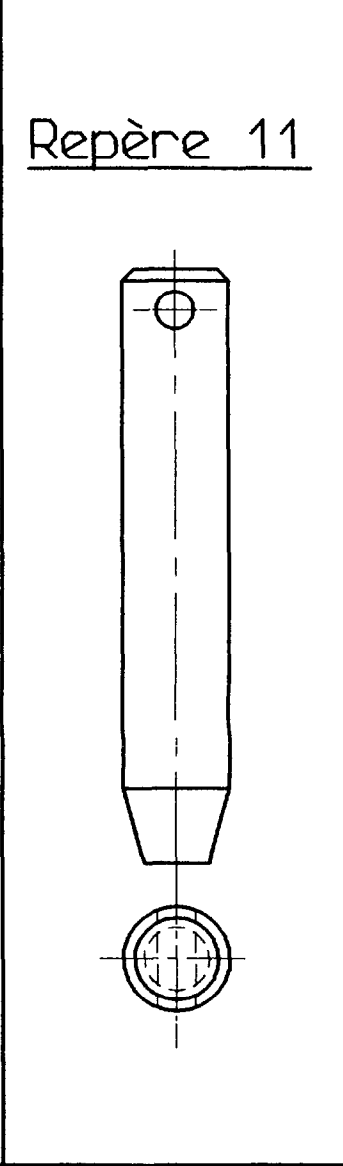
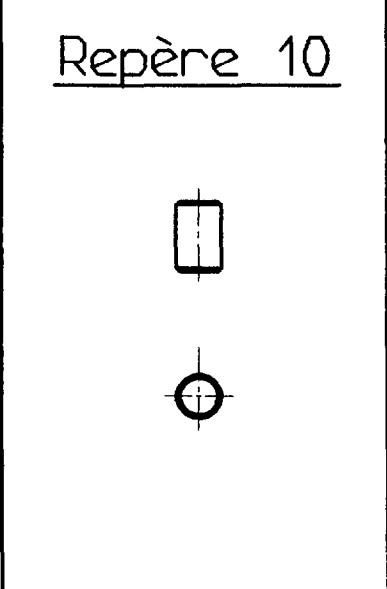
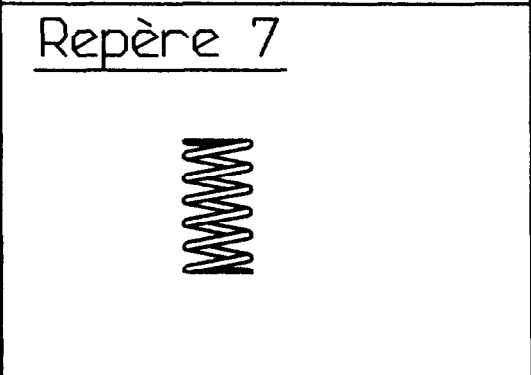
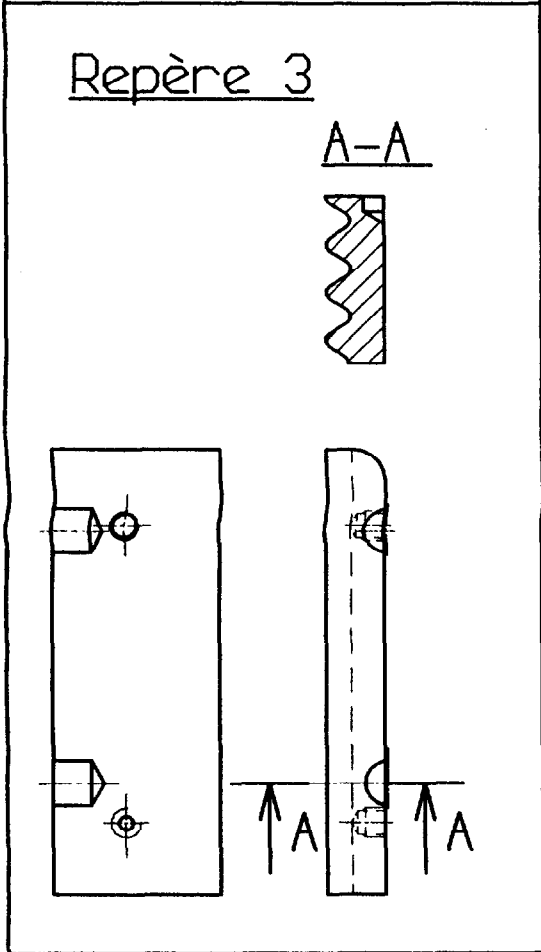


Document DT2

Ech. 1:1	BREVET DE TECHNICIEN SUPERIEUR	Session 2001
 	Industrie du Culr. INDEST	Option: Tannerie-Méglisserie
Durée: 5h	Epreuve: Dessin Technique et Technologie de Construction	
Coef. : 2	ATTACHE INFÉRIEURE	Dessiné par: AM
Format: A3V		Page: 3/11


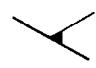
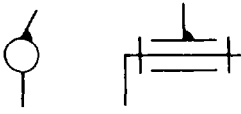

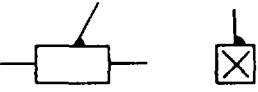
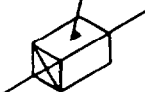
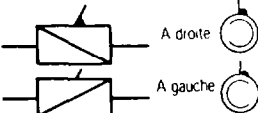
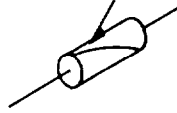
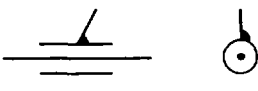

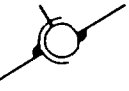

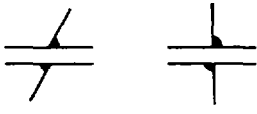





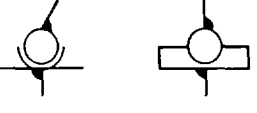

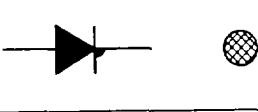
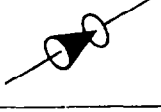


Document DT3



Ech. 1:1	BREVET DE TECHNICIEN SUPERIEUR	Seslon 2001
	Industrie du Culr. INDEST	Option: Tannerie-Méglisserie
Durée: 5h	Epreuve: Dessin Technique et Technologie de Construction	
Coef. : 2	ATTACHE INFERIEURE	
Format: A3V		
		Page: 4/11

## Liaisons usuelles de deux solides

Désignation	Mouvements relatifs	Symbole	
		Représentation plane	Représentation en perspective
Liaison encastrement ou liaison fixe	0 rotation 0 translation	 * S'il n'y a pas d'ambiguïté	
Liaison pivot	1 rotation 0 translation		
Liaison glissière	0 rotation 1 translation		
Liaison hélicoïdale	1 rotation 1 translation conjuguées		
Liaison pivot-glissant	1 rotation 1 translation		
Liaison sphérique à doigt	2 rotations 0 translation		
Liaison appui plan	1 rotation 2 translations		
Liaison rotule ou Liaison sphérique	3 rotations 0 translation		
Liaison linéaire rectiligne	2 rotations 2 translations		
Liaison linéaire annulaire	3 rotations 1 translation		
Liaison ponctuelle	3 rotations 2 translations		

**Document DT4**

<b>BREVET DE TECHNICIEN SUPERIEUR</b>		<b>Session 2001</b>	
<b>INDUSTRIE DU CUIR</b>		<b>Option: Tannerie-Mégisserie</b>	
Epreuve:	<b>Dessin Technique</b>	<b>Durée: 5 heures</b>	<b>coefficient: 2</b>
INDEST	<b>et</b>		
<b>Technologie de Construction</b>			