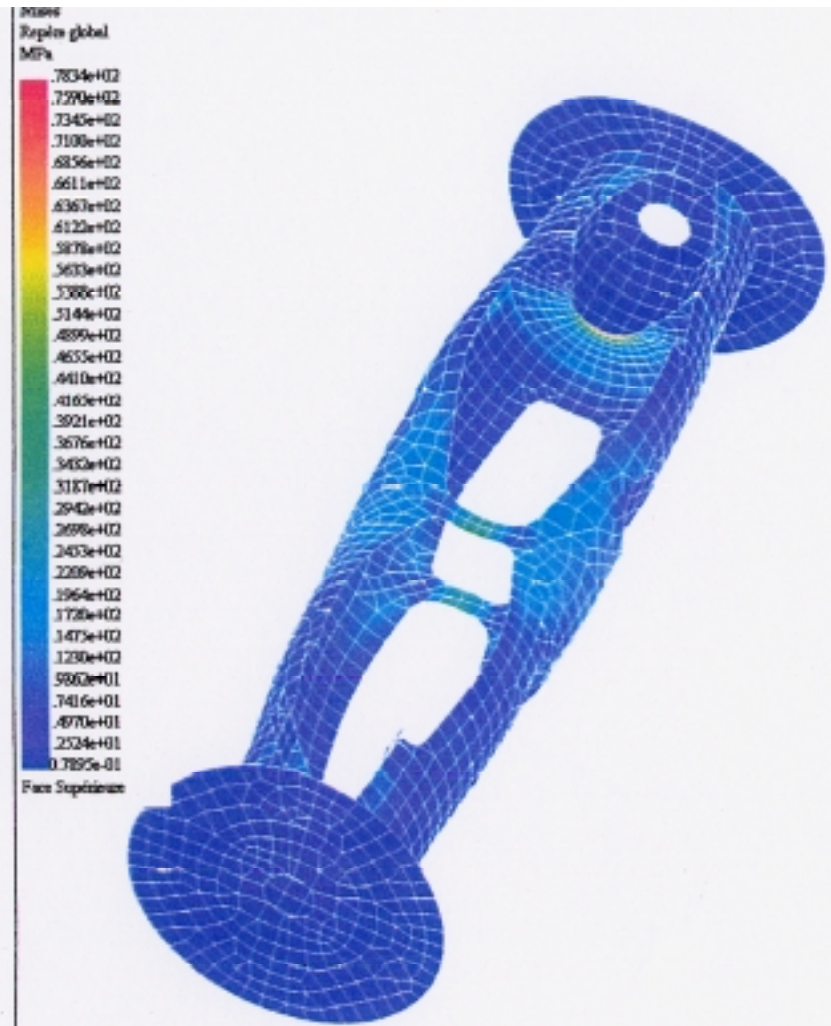


Document 7 - a

Modèle A - Calcul des contraintes de VON MISES



CASTOR Concept View
VNT 8.01



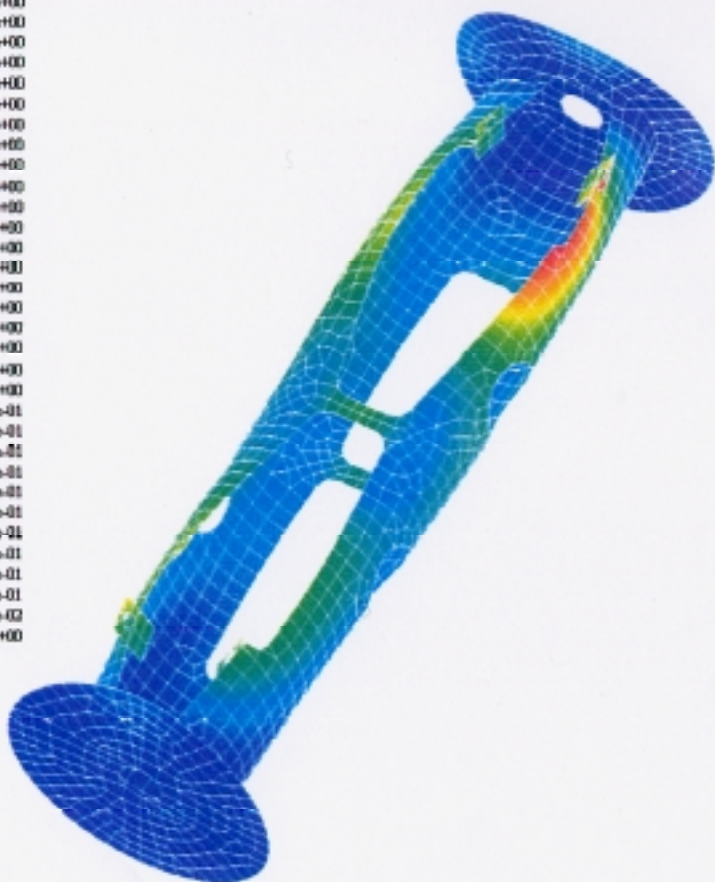
Document 7 - c

Modèle B - Calcul des contraintes de VON MISES



CASTOR Concept View
VNT 8.01

Déplacements
Réfère global
mm



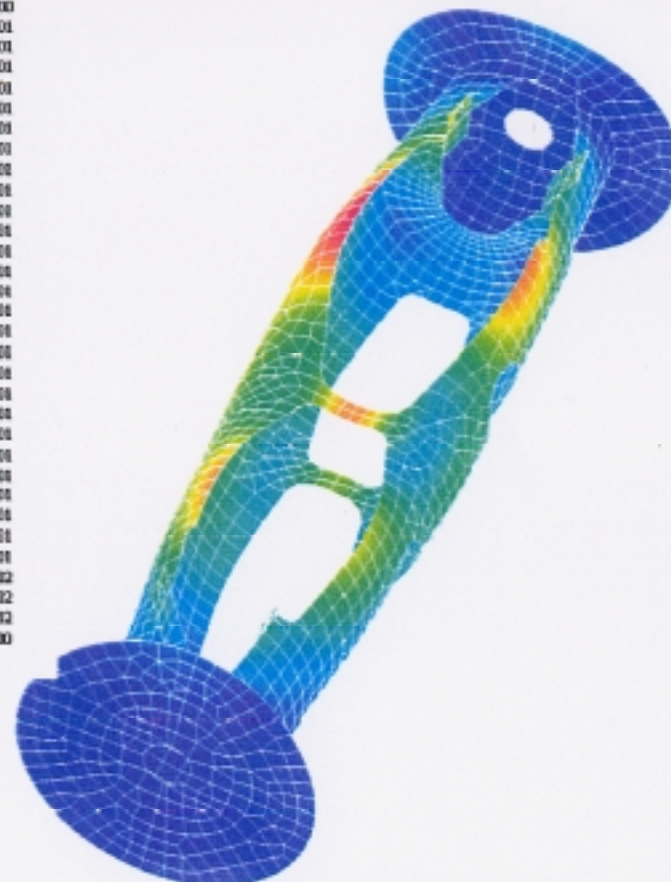
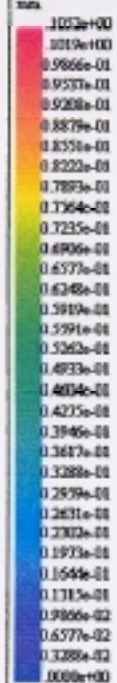
Document 7 - b

Modèle A - Calcul des déplacements



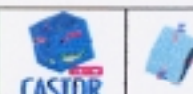
CASTOR Concept View
VMT 6.11

Déplacements
Réfère global
mm

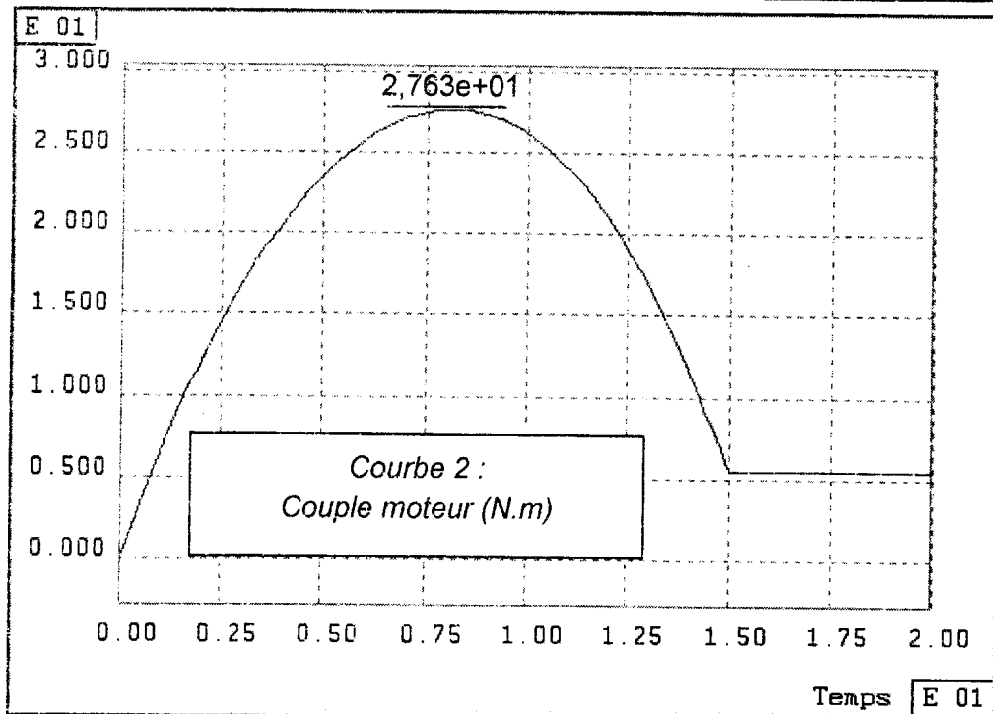
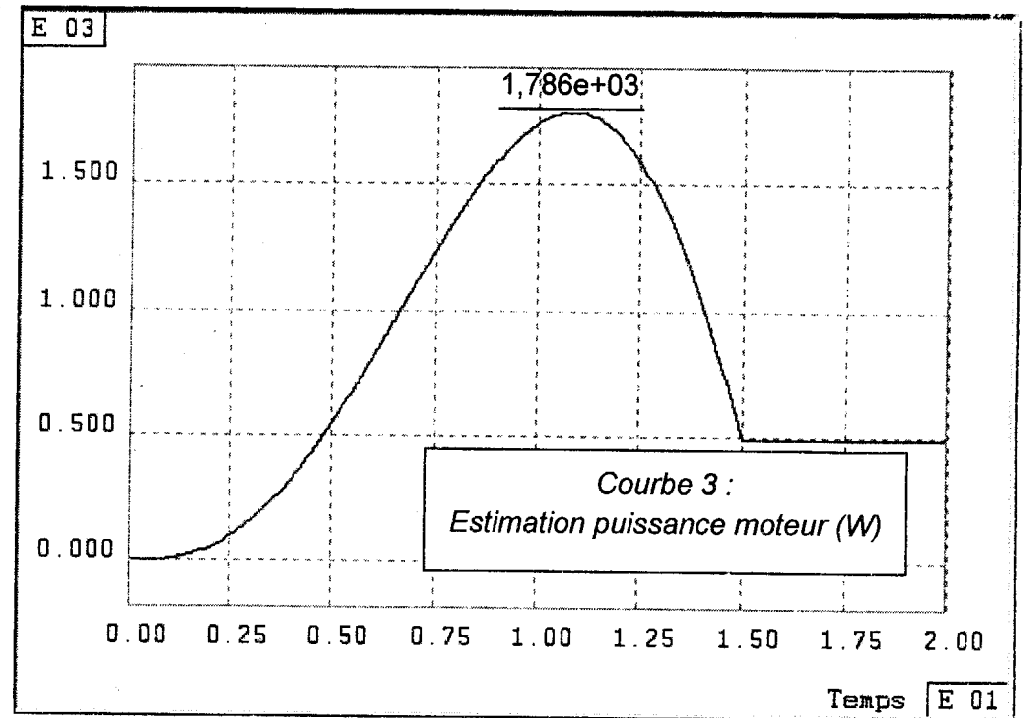
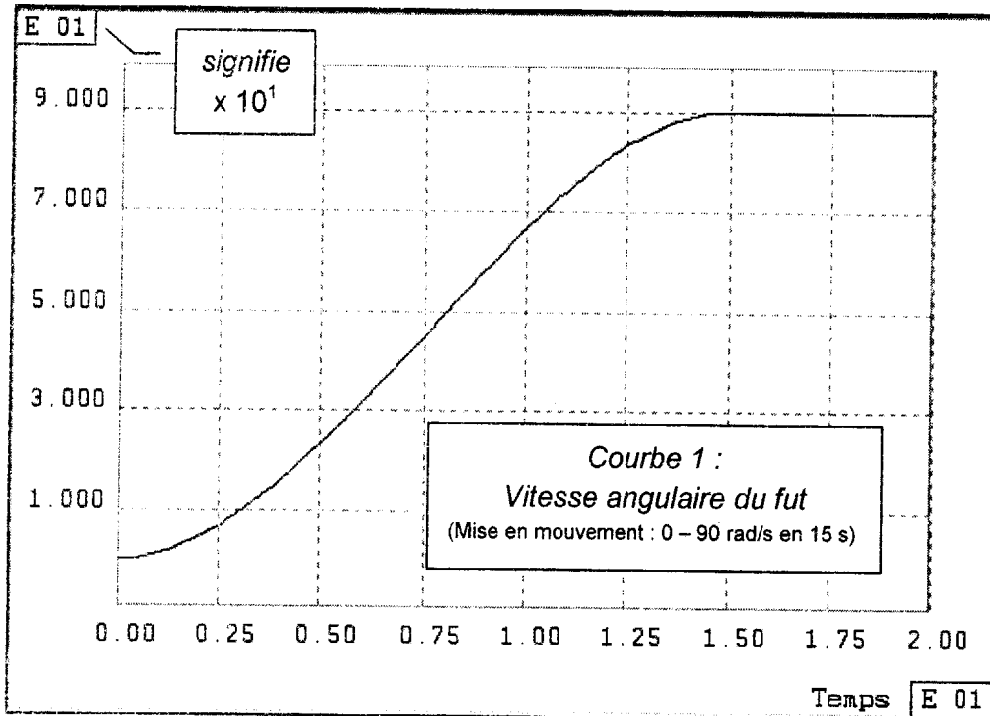


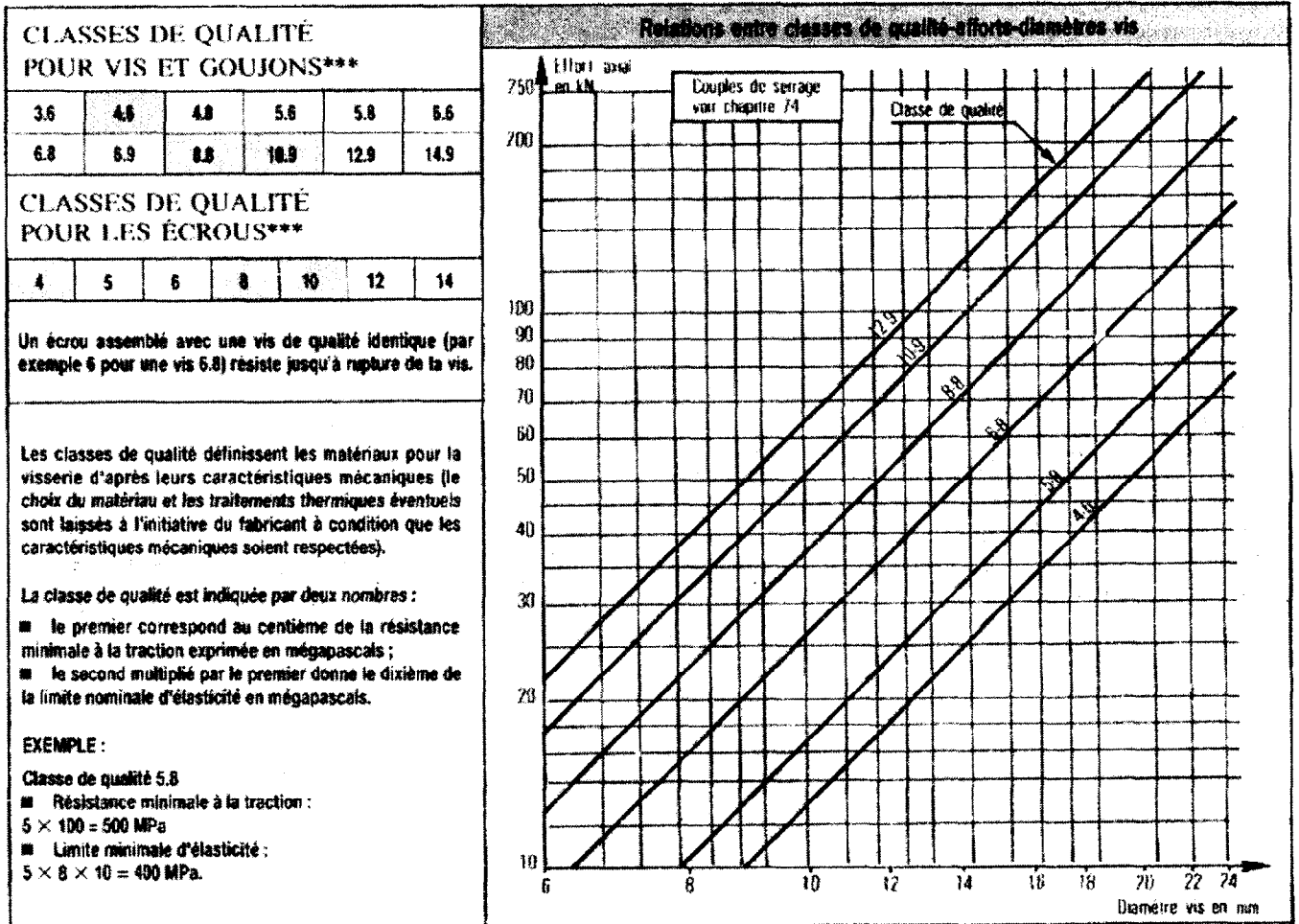
Document 7 - d

Modèle B - Calcul des déplacements

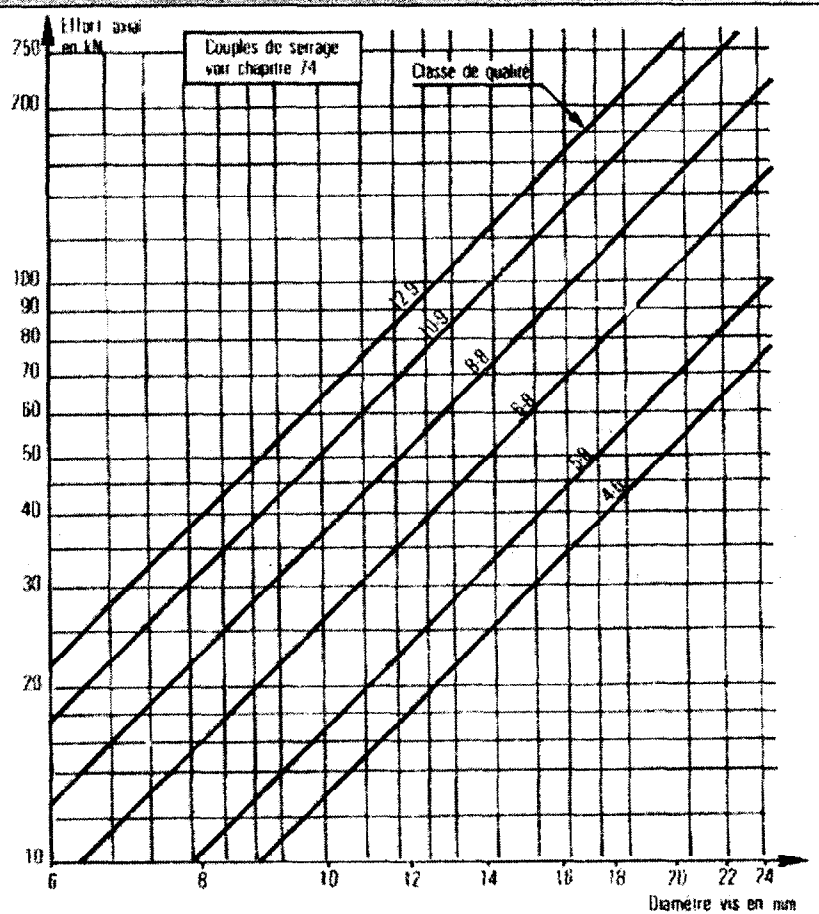


CASTOR Concept View
VMT 6.11



CLASSES DE QUALITE (Visserie)

Relations entre classes de qualité-efforts-diamètres vis



* Rm = résistance minimale à la rupture par traction en mégapascals.

** Re = Limite minimale d'élasticité en mégapascals.

(1 MPa = 1 N·mm⁻²)

*** Les qualités teintées sont les plus usuelles.