

ETUDE D'UNE CONSTRUCTION

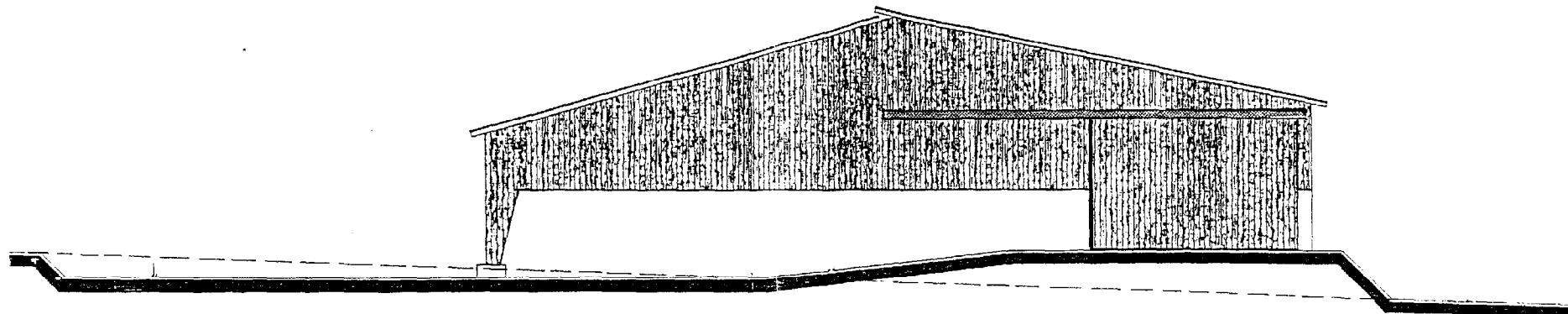
SOUS-EPREUVE U4.2

**RECHERCHE ET DEFINITION DE SOLUTIONS
CONSTRUCTIVES**

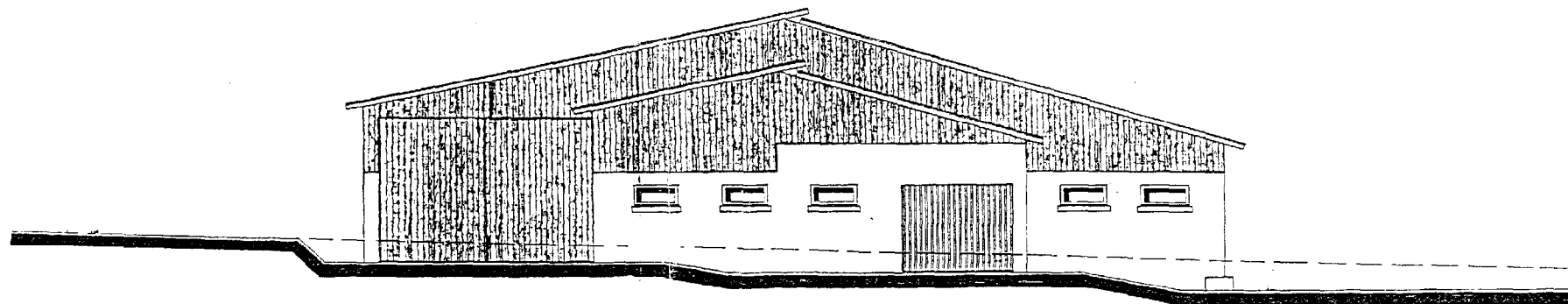
STABULATION LIBRE

DOSSIER TECHNIQUE

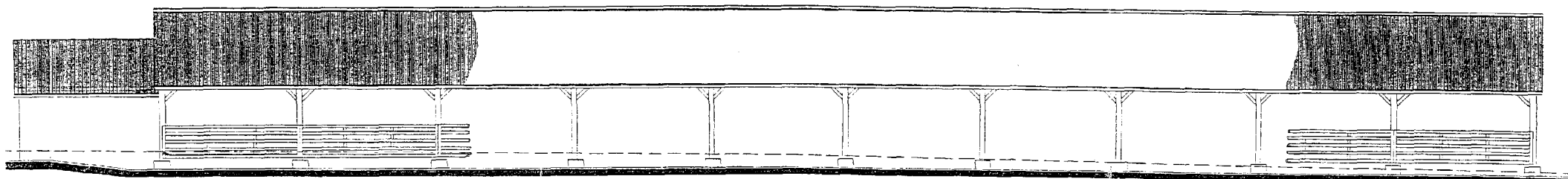
Document Technique DT1	: vues des pignons
Document Technique DT2	: vues des longs pans
Document Technique DT3	: coupe CD sur le bâtiment principal
Document Technique DT4	: coupe AB sur laiterie
Document Technique DT5	: vue en plan, repérage des coupes



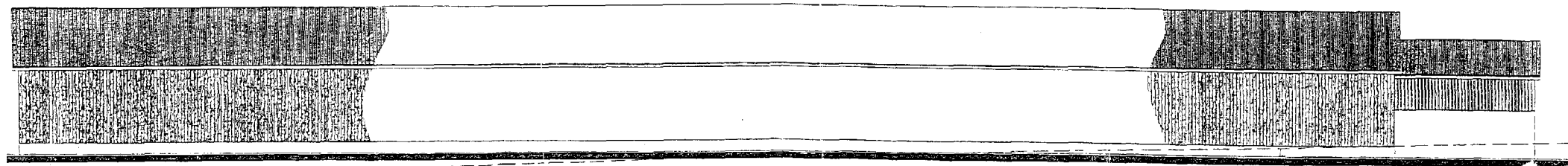
PIGNON NORD_EST



PIGNON SUD_OUEST

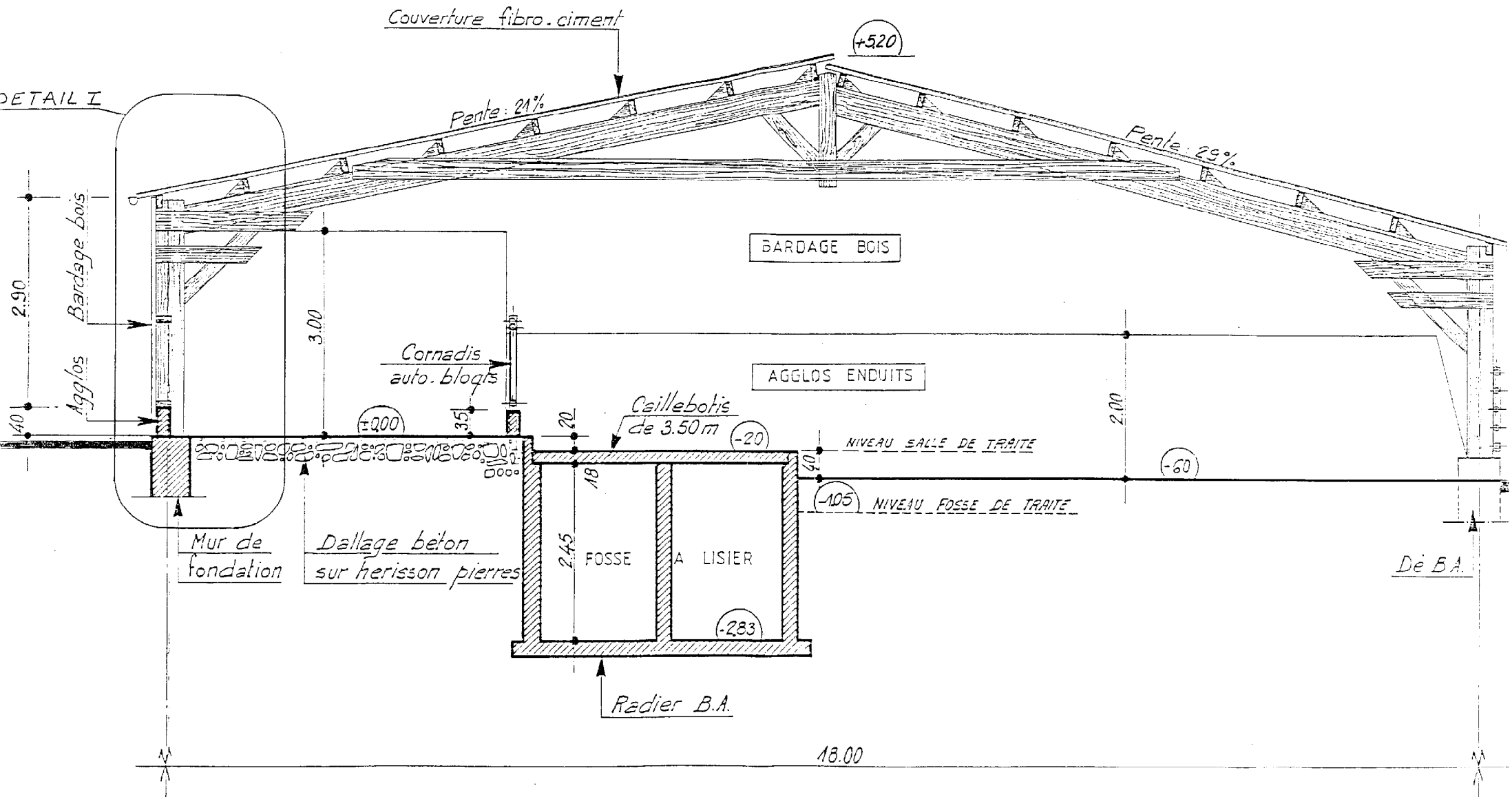


LONG PAN SUD-EST

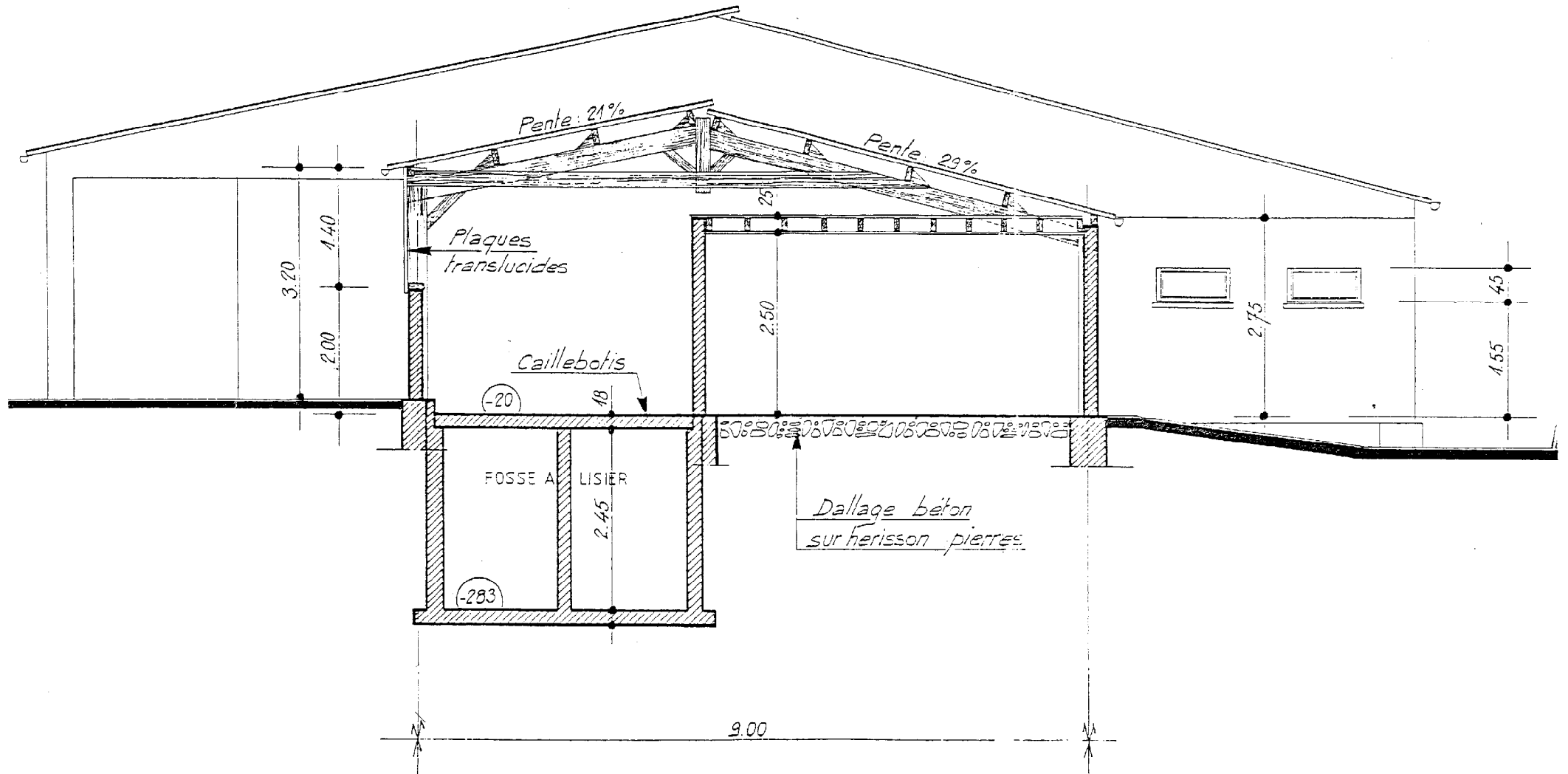


LONG PAN NORD-OUEST

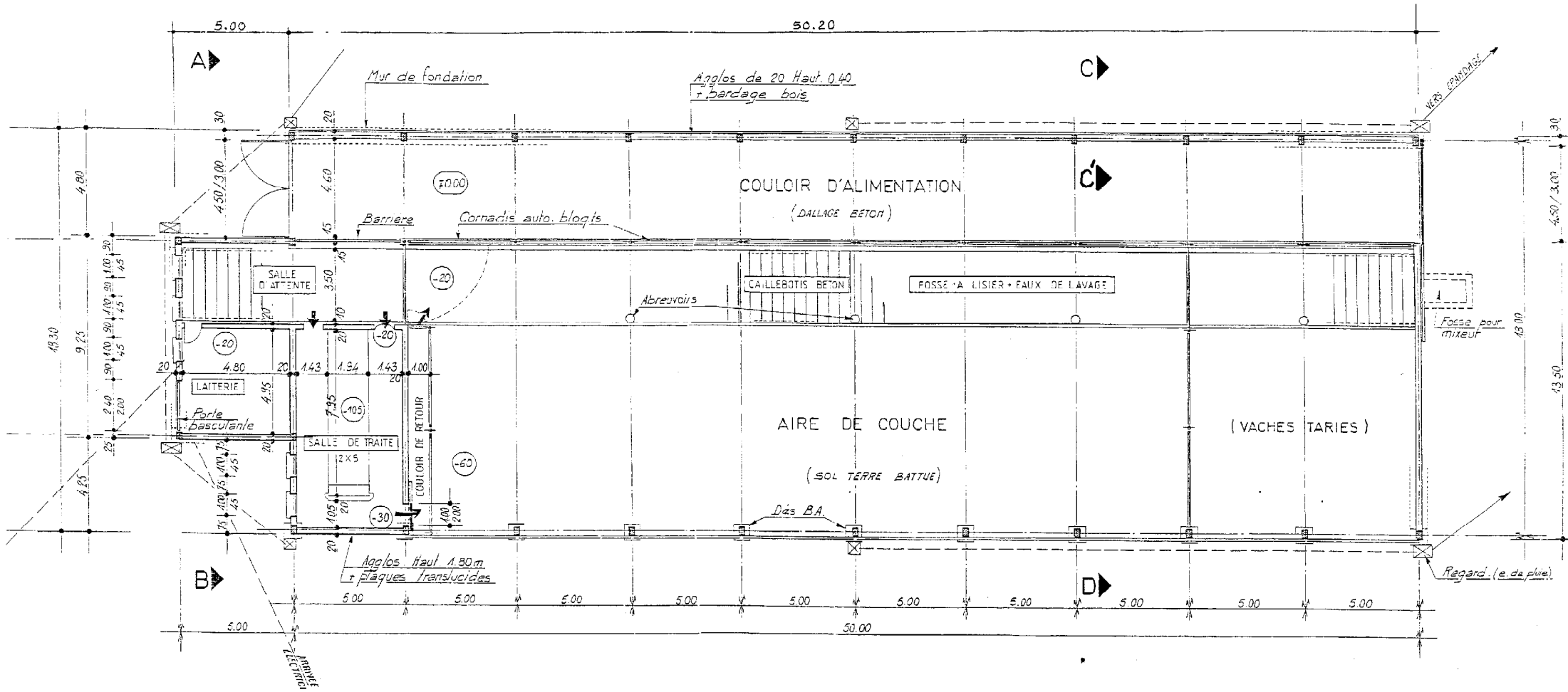
STABULATION LIBRE



STABULATION LIBRE COUPE CD



**STABULATION LIBRE
COUPE AB**



STABULATION LIBRE VUE EN PLAN