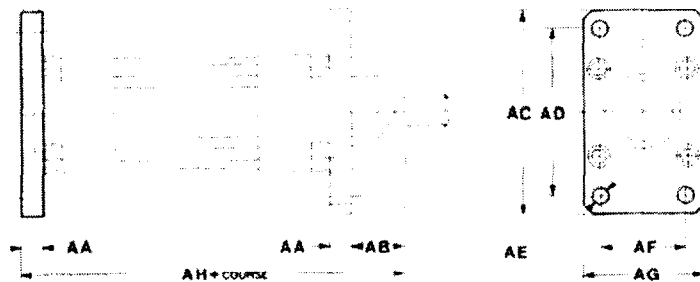
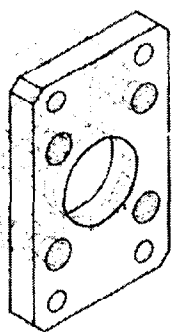


COURSE	DIAMETRE 32		DIAMETRE 40		DIAMETRE 50	
	tige inox	tige chromée	tige inox	tige chromée	tige inox	tige chromée
25	K100-32-25M	K200-32-25M	K100-40-25M	K200-40-25M	K100-50-25M	K200-50-25M
50	K100-32-50M	K200-32-50M	K100-40-50M	K200-40-50M	K100-50-50M	K200-50-50M
75	K100-32-75M	K200-32-75M	K100-40-75M	K200-40-75M	K100-50-75M	K200-50-75M
80	K100-32-80M	K200-32-80M	K100-40-80M	K200-40-80M	K100-50-80M	K200-50-80M
100	K100-32-100M	K200-32-100M	K100-40-100M	K200-40-100M	K100-50-100M	K200-50-100M
125	K100-32-125M	K200-32-125M	K100-40-125M	K200-40-125M	K100-50-125M	K200-50-125M
150	K100-32-150M	K200-32-150M	K100-40-150M	K200-40-150M	K100-50-150M	K200-50-150M
160	K100-32-160M	K200-32-160M	K100-40-160M	K200-40-160M	K100-50-160M	K200-50-160M
200	K100-32-200M	K200-32-200M	K100-40-200M	K200-40-200M	K100-50-200M	K200-50-200M
250	K100-32-250M	K200-32-250M	K100-40-250M	K200-40-250M	K100-50-250M	K200-50-250M
300	K100-32-300M	K200-32-300M	K100-40-300M	K200-40-300M	K100-50-300M	K200-50-300M
320	K100-32-320M	K200-32-320M	K100-40-320M	K200-40-320M	K100-50-320M	K200-50-320M
350	K100-32-350M	K200-32-350M	K100-40-350M	K200-40-350M	K100-50-350M	K200-50-350M
400	K100-32-400M	K200-32-400M	K100-40-400M	K200-40-400M	K100-50-400M	K200-50-400M
450	K100-32-450M	K200-32-450M	K100-40-450M	K200-40-450M	K100-50-450M	K200-50-450M
500	K100-32-500M	K200-32-500M	K100-40-500M	K200-40-500M	K100-50-500M	K200-50-500M
COURSE	DIAMETRE 63		DIAMETRE 80		DIAMETRE 100	
	tige inox	tige chromée	tige inox	tige chromée	tige inox	tige chromée
25	K100-63-25M	K200-63-25M	K100-80-25M	K200-80-25M	K100-100-25M	K200-100-25M
50	K100-63-50M	K200-63-50M	K100-80-50M	K200-80-50M	K100-100-50M	K200-100-50M
75	K100-63-75M	K200-63-75M	K100-80-75M	K200-80-75M	K100-100-75M	K200-100-75M
80	K100-63-80M	K200-63-80M	K100-80-80M	K200-80-80M	K100-100-80M	K200-100-80M
100	K100-63-100M	K200-63-100M	K100-80-100M	K200-80-100M	K100-100-100M	K200-100-100M
125	K100-63-125M	K200-63-125M	K100-80-125M	K200-80-125M	K100-100-125M	K200-100-125M
150	K100-63-150M	K200-63-150M	K100-80-150M	K200-80-150M	K100-100-150M	K200-100-150M
160	K100-63-160M	K200-63-160M	K100-80-160M	K200-80-160M	K100-100-160M	K200-100-160M
200	K100-63-200M	K200-63-200M	K100-80-200M	K200-80-200M	K100-100-200M	K200-100-200M
250	K100-63-250M	K200-63-250M	K100-80-250M	K200-80-250M	K100-100-250M	K200-100-250M
300	K100-63-300M	K200-63-300M	K100-80-300M	K200-80-300M	K100-100-300M	K200-100-300M
320	K100-63-320M	K200-63-320M	K100-80-320M	K200-80-320M	K100-100-320M	K200-100-320M
350	K100-63-350M	K200-63-350M	K100-80-350M	K200-80-350M	K100-100-350M	K200-100-350M
400	K100-63-400M	K200-63-400M	K100-80-400M	K200-80-400M	K100-100-400M	K200-100-400M
450	K100-63-450M	K200-63-450M	K100-80-450M	K200-80-450M	K100-100-450M	K200-100-450M
500	K100-63-500M	K200-63-500M	K100-80-500M	K200-80-500M	K100-100-500M	K200-100-500M
COURSE	DIAMETRE 125		DIAMETRE 160		DIAMETRE 200	
	tige inox	tige chromée	tige inox	tige chromée	tige inox	tige chromée
25	K100-125-25M	K200-125-25M	K100-160-25	K200-160-25	K100-200-25	K200-200-25
50	K100-125-50M	K200-125-50M	K100-160-50	K200-160-50	K100-200-50	K200-200-50
75	K100-125-75M	K200-125-75M	K100-160-75	K200-160-75	K100-200-75	K200-200-75
80	K100-125-80M	K200-125-80M	K100-160-80	K200-160-80	K100-200-80	K200-200-80
100	K100-125-100M	K200-125-100M	K100-160-100	K200-160-100	K100-200-100	K200-200-100
125	K100-125-125M	K200-125-125M	K100-160-125	K200-160-125	K100-200-125	K200-200-125
150	K100-125-150M	K200-125-150M	K100-160-150	K200-160-150	K100-200-150	K200-200-150
160	K100-125-160M	K200-125-160M	K100-160-160	K200-160-160	K100-200-160	K200-200-160
200	K100-125-200M	K200-125-200M	K100-160-200	K200-160-200	K100-200-200	K200-200-200
250	K100-125-250M	K200-125-250M	K100-160-250	K200-160-250	K100-200-250	K200-200-250
300	K100-125-300M	K200-125-300M	K100-160-300	K200-160-300	K100-200-300	K200-200-300
320	K100-125-320M	K200-125-320M	K100-160-320	K200-160-320	K100-200-320	K200-200-320
350	K100-125-350M	K200-125-350M	K100-160-350	K200-160-350	K100-200-350	K200-200-350
400	K100-125-400M	K200-125-400M	K100-160-400	K200-160-400	K100-200-400	K200-200-400
450	K100-125-450M	K200-125-450M	K100-160-450	K200-160-450	K100-200-450	K200-200-450
500	K100-125-500M	K200-125-500M	K100-160-500	K200-160-500	K100-200-500	K200-200-500

Sans capteur magnétique enlever le suffixe «M».

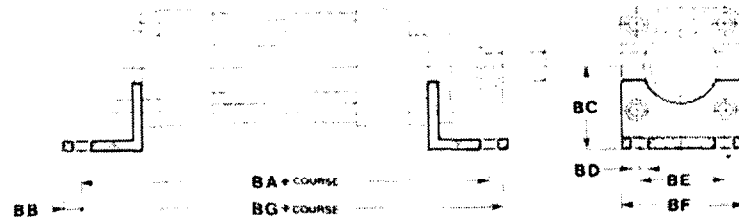
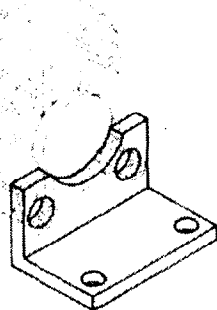
Le vérin équipé de piston magnétique, suffixe «M», est signalé par une étiquette rouge.

Montage par bride avant ou arrière



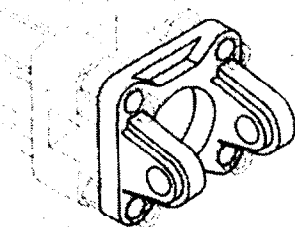
vér. Ø	Code	Poids
32	KF-12032	0.200
40	KF-12040	0.285
50	KF-12050	0.520
63	KF-12063	0.660
80	KF-12080	1.480
100	KF-12100	2
125	KF-12125	4
160	KF-12160	6.970
200	KF-12200	12.230

Équerre avant et arrière



vér. Ø	Code	Poids
32	KF-13032	0.075
40	KF-13040	0.095
50	KF-13050	0.175
63	KF-13063	0.215
80	KF-13080	0.435
100	KF-13100	0.585
125	KF-13125	1.145
160	KF-13160	2.390
200	KF-13200	3.355

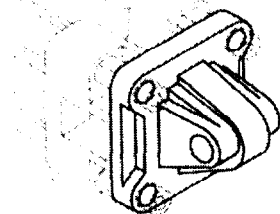
Articulation arrière



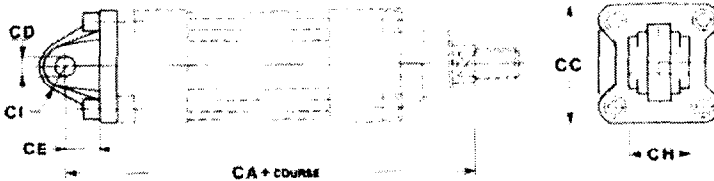
Articulation femelle



vér. Ø	Code articulation femelle	Poids
32	KF-10032A	0.065
40	KF-10040A	0.080
50	KF-10050A	0.150
63	KF-10063A	0.250
80	KF-10080A	0.365
100	KF-10100A	0.570
125	KF-10125A	1.745
160	KF-10160A	2.410
200	KF-10200A	3.495



Articulation mâle



vér. Ø	Code articulation mâle	Poids
32	KF-11032	0.085
40	KF-11040	0.100
50	KF-11050	0.175
63	KF-11063	0.255
80	KF-11080	0.420
100	KF-11100	0.660
125	KF-11125	1.545
160	KF-11160	2.280
200	KF-11200	3.520

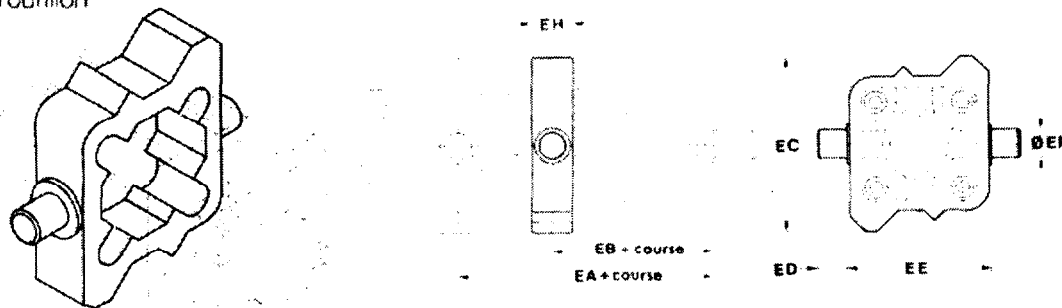
vér. Ø	AA	AB	AC	JS14 AD	H13 AE	JS14 AF	AG	AH	SA	BB	JS15 BC	H13 BD	JS14 BE	BF	BG	CA	H14 CB	CC	H9 CD	CE	CF	CG	H14 CH	CI
32	10	16	77	64	7	32	45	130	142	6	32	7	32	45	144	142	26	48	10	14	9.5	45	26	15
40	10	20	90	72	9	36	55	145	161	8	36	9	36	52	163	160	28	54	12	16.5	11	52	28	18
50	12	25	110	90	9	45	65	155	170	10	45	9	45	64	175	170	32	65	12	17.5	11.5	60	32	20
63	12	25	120	100	9	50	75	170	185	12	50	9	50	74	190	190	40	75	16	21.5	15	70	40	23
80	16	30	155	126	12	63	95	190	210	15	63	12	63	94	215	210	50	96	16	24	15	90	50	27
100	16	35	180	150	14	75	115	205	220	20	71	14	75	114	230	230	60	115	20	28	20	110	60	
125	20	45	220	180	16	90	140	245	250	15	90	16	90	140	270	275	70	140	25	30	26	130	70	26
160	20	60	275	230	18	115	180	280	300	20	115	18	115	180	320	315	90	180	30	35	30	170	90	30
200	25	75	315	270	22	135	220	300	350	30	135	22	135	220	345	335	90	220	30	35	30	170	90	30

Articulation arrière mâle rotulée



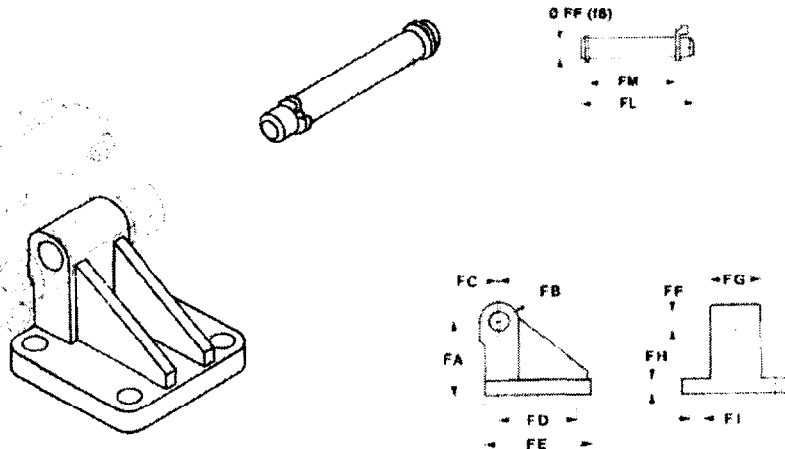
ver. Ø	Code	Poids
32	KF-11032S	0.10
40	KF-11040S	0.17
50	KF-11050S	0.26
63	KF-11063S	0.34
80	KF-11080S	1.60
100	KF-11100S	0.77

Tourillon



ver. Ø	Code	Poids
32	KF-14032	0.22
40	KF-14040	0.34
50	KF-14050	0.56
63	KF-14063	0.80
80	KF-14080	1.3
100	KF-14100	2
125	KF-14125	3.2
160	KF-14160	4.9
200	KF-14200	7.5

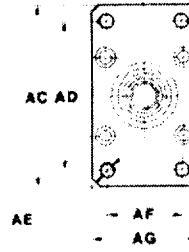
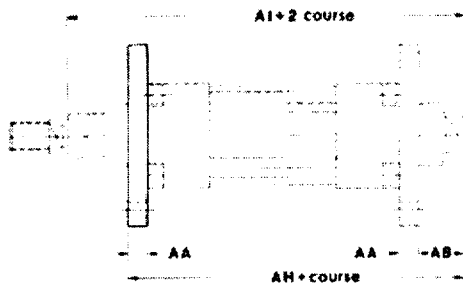
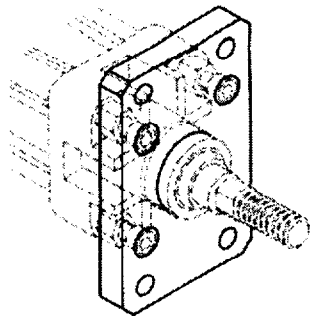
Articulation arrière d'équerre



ver. Ø	Code	Poids
32	KF-18032	0.031
40	KF-18040	0.050
50	KF-18050	0.059
63	KF-18063	0.122
80	KF-18080	0.153
100	KF-18100	0.292
125	KF-18125	1.530
160	KF-18160	0.990
200	KF-18200	0.900

ver. Ø	Code	Poids
32	KF-19032	0.09
40	KF-19040	0.12
50	KF-19050	0.20
63	KF-19063	0.32
80	KF-19080	0.58
100	KF-19100	0.91

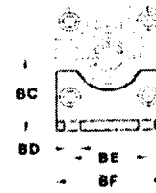
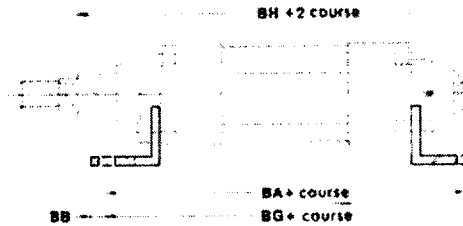
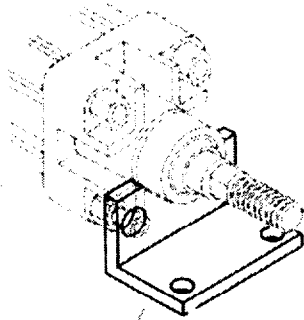
ver. Ø	DA	DB	DC	DE	DF	EA	EB	EC	H14 ED	H14 EE	Ø9 EF	EH	FA	FB	FC	FD	FE	H18/18 FF	FG	FH	FI	FL	FM
32	15	142	14	10.5	14	81	65	65	12	50	12	25	32	10	1.2	32.5	49	10	26	10	6.4	53	46
40	18	160	16.5	12	16	92	73	75	16	63	16	25	36	12	2.6	38	55	12	28	10	6.4	61.3	53
50	20	170	17.5	12	16	97	83	86	16	75	16	28	45	12	0.3	46.5	67	12	32	12	8.4	69	61
63	23	190	21.5	15	21	104	91	105	20	90	20	34	50	16	3.3	56.5	77	16	40	12	8.4	80.5	71
80	27	210	24	15	21	117	103	130	20	110	20	38	63	16	1.0	72	97	16	50	14	10.5	100.5	91
100	29.5	230	28	18	25	126	114	145	25	132	25	44	73	20	2.5	89	115	20	60	16	10.5	122.5	111
125						154	135	175	25	160	25	54						25				140	131
160						190	150	190	32	200	32	40						30					171
200						205	165	240	32	250	32	40						30					



Vér. Ø	Code	Poids
32	KF-12032	0.200
40	KF-12040	0.295
50	KF-12050	0.520
63	KF-12063	0.660
80	KF-12080	1.480
100	KF-12100	2.000
125	KF-12125	4.000
160	KF-12160	6.970
200	KF-12200	12.230

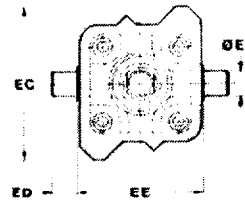
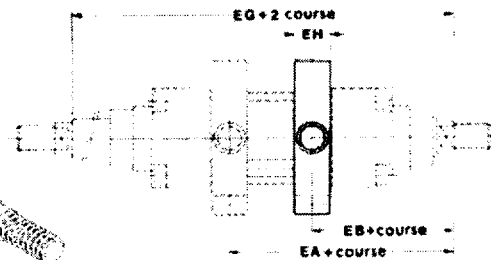
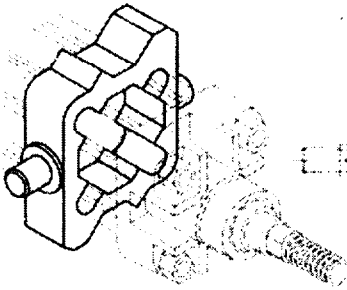
Équerre avant et arrière

Matériau : acier zingué pour Ø 32 à 200 mm



Vér. Ø	Code	Poids
32	KF-13032	0.075
40	KF-13040	0.095
50	KF-13050	0.175
63	KF-13063	0.215
80	KF-13080	0.435
100	KF-13100	0.565
125	KF-13125	1.145
160	KF-13160	2.390
200	KF-13200	3.355

Tourillon



Vér. Ø	Code	Poids
32	KF-14032	0.22
40	KF-14040	0.34
50	KF-14050	0.56
63	KF-14063	0.60
80	KF-14080	1.3
100	KF-14100	2
125	KF-14125	3.2
160	KF-14160	4.9
200	KF-14200	7.5

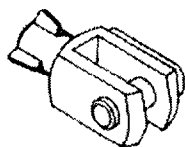
Vér. Ø	AA	AB	AC	JS14 AD	H13 AE	JS14 AF	AG	AH	AI	BA	BB	JS15 BC	H13 BD	JS14 BE	BF	BG	BH	EA	EB	EC	H14 ED	H14 EE	ø9 EF	EG	EH
32	10	16	77	64	7	32	45	130	146	142	6	32	7	32	45	144	146	81	65	65	12	50	12	146	25
40	10	20	90	72	9	36	55	145	165	161	8	36	9	36	52	163	165	92	73	75	16	63	16	165	25
50	12	25	110	90	9	45	65	155	180	170	10	45	9	45	64	175	180	97	83	95	16	75	16	180	28
63	12	25	120	100	9	50	75	170	195	185	12	50	9	50	74	190	195	104	91	105	20	90	20	195	34
80	16	30	155	126	12	63	95	190	220	210	15	63	12	63	94	215	220	117	103	130	20	110	20	220	38
100	16	35	180	150	14	75	115	205	240	220	20	71	14	75	114	230	240	126	114	145	25	132	25	240	40
125	20	45	220	180	16	90	140	245	290	250	15	90	16	90	140	270	290	154	136	175	25	160	25	290	54
160	20	60	275	230	18	115	180	280	340	300	20	115	18	115	180	320	340	190	150	190	32	200	32	340	40
200	25	70	315	270	22	135	220	300	370	320	30	135	22	135	220	345	370	205	165	240	32	250	32	370	40

Ecrou de bout de tige

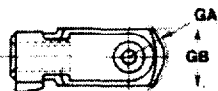
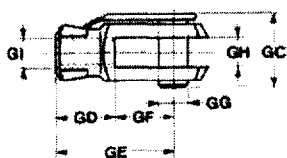


vér. Ø	ZM	KK	OR	Code
32	M10 x 1,25	17	6	KF-16032
40	M12 x 1,25	19	7	KF-16040
50	M16 x 1,5	24	8	KF-16050
63	M16 x 1,5	24	8	
80	M20 x 1,5	30	9	KF-16080
100	M20 x 1,5	30	9	
125	M27 x 2,00	41	13,5	KF-16125
160	M36 x 2,00	55	18	KF-16160
200	M36 x 2,00	55	18	

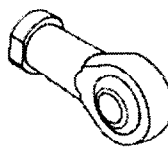
Fourche de bout de tige avec axe



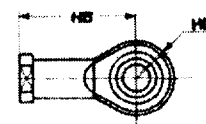
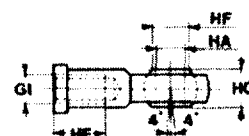
vér. Ø	Code	Poids
32	KF-15032	0.090
40	KF-15040	0.150
50/63	KF-15050	0.340
80/100	KF-15080	0.678
125	KF-15125	1.790
160/200	KF-15160	3.870



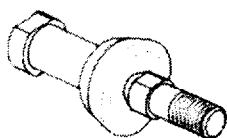
Rotule de bout de tige



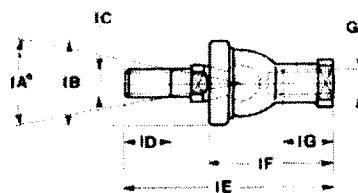
vér. Ø	Code	Poids
32	KF-17032	0.075
40	KF-17040	0.115
50/63	KF-17050	0.225
80/100	KF-17080	0.386



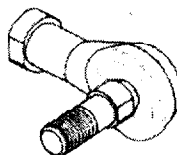
Embout rotulé oscillant



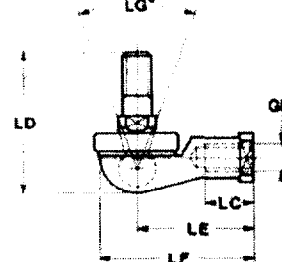
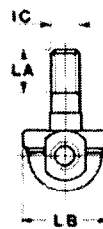
vér. Ø	Code	Poids
32	KF-22025	0.120
40	KF-22040	0.185
50/63	KF-22050	0.360
80/100	KF-22080	0.570



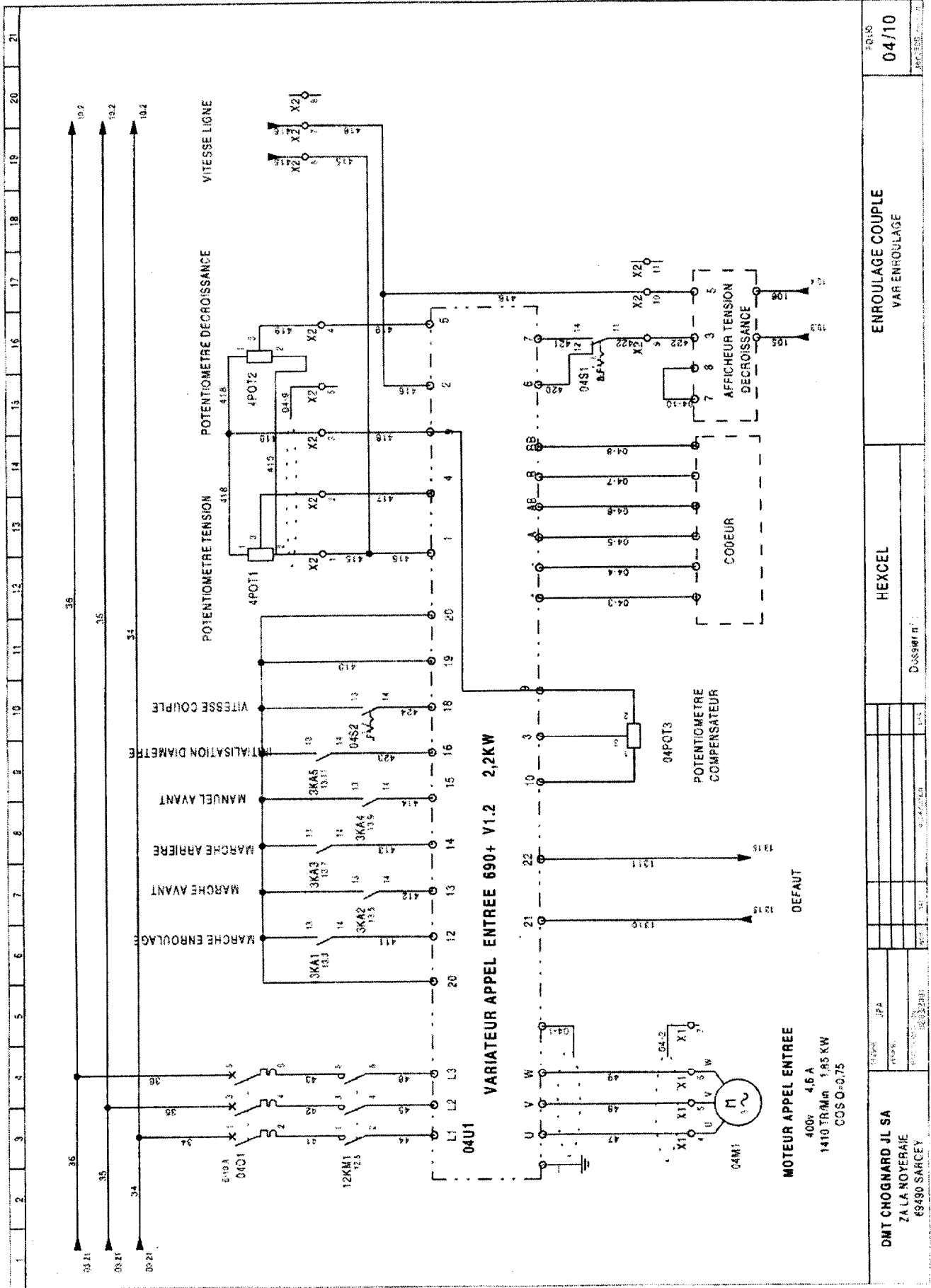
Embout rotulé oscillant d'équerre



vér. Ø	Code	Poids
32	KF-23025	0.110
40	KF-23040	0.165
50/63	KF-23050	0.335
80/100	KF-23080	0.540



vér. Ø	GA	GB	GC	GD	GE	GF	GG	GH	GI	HA	HB	HC	HD	HE	HF	IA	IB	IC	ID	IE	IF	IG	LA	LB	LC	LD	LE	LF	LG		
32	12	20	26	20	40	20	10	10	M10 x1,25	10	43	14	14	20	13	30°	32	M10 x1,25	15	74,5	54,5	18	15	32	21	50,5	43	57	50°		
40	14	24	31	24	48	24	12	12	M12 x1,25	12	50	16	16	22	15,4	30°	36	M12 x1,25	17	84	61	20	17	36	27	57,5	50	66	50°		
50	19	32	39	32	64	32	16	16	M16 x1,5	16	64	21	21	28	19,3	22°	47	M16 x1,5	23	112	62	27	23	47	33	79,5	64	84	40°		
63																															
80	25	40	50	40	80	40	20	20	M20 x1,5	20	77	25	25	33	24,3	15°	58	M20 x1,5	25	133	70	38	25	58	40	90	77	99	32°		
100																															
125	45	55	65	56	110	54	30	30	M27 x2																						
160	57	70	81	72	144	72	35	35	M36 x2																						
200	35	70	81	72	144	72	35	35	M36 x2																						



F016
04/10

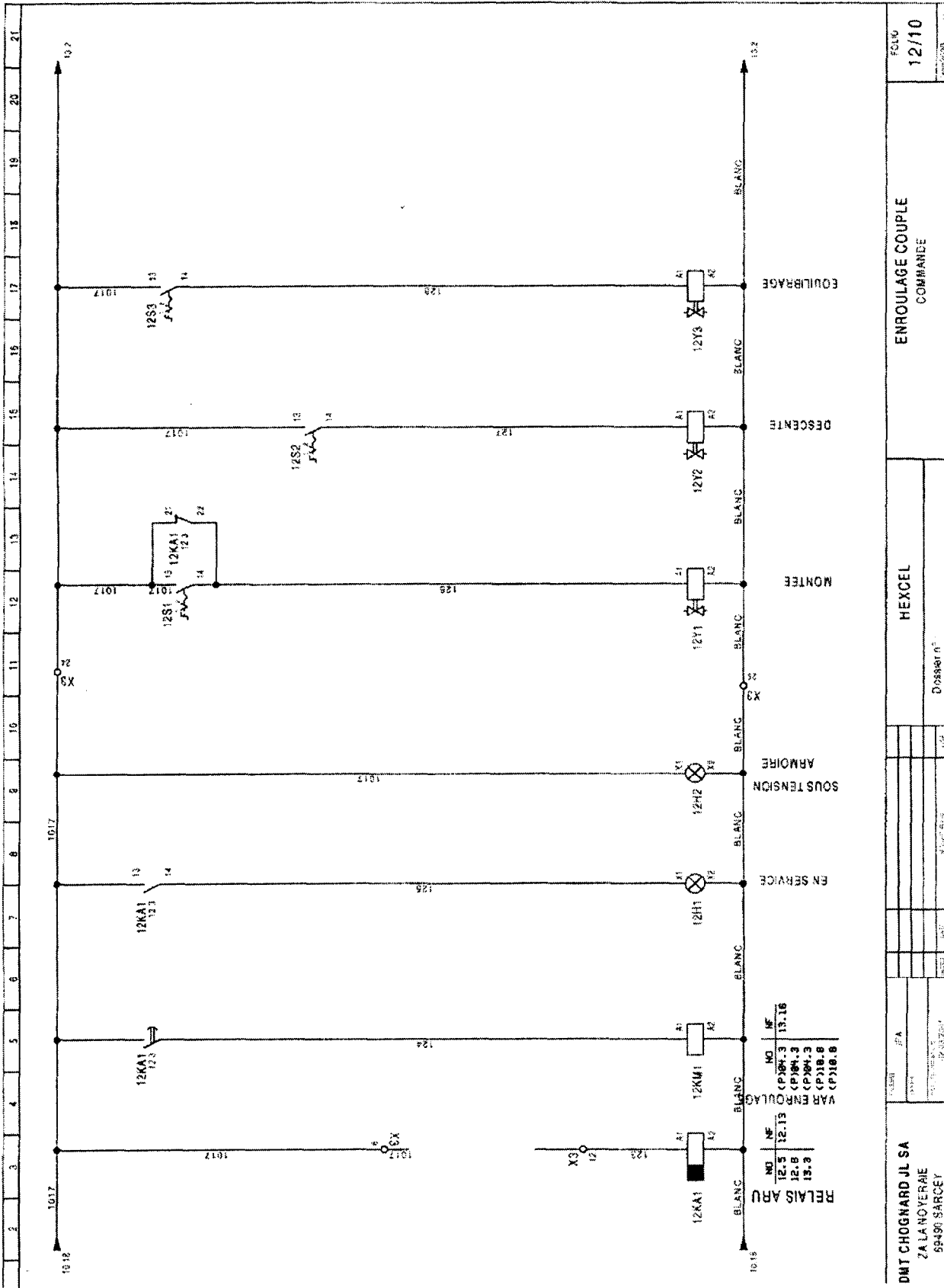
ENROULEMENT COUPLE
VAR ENROULEMENT

HEXCCEL

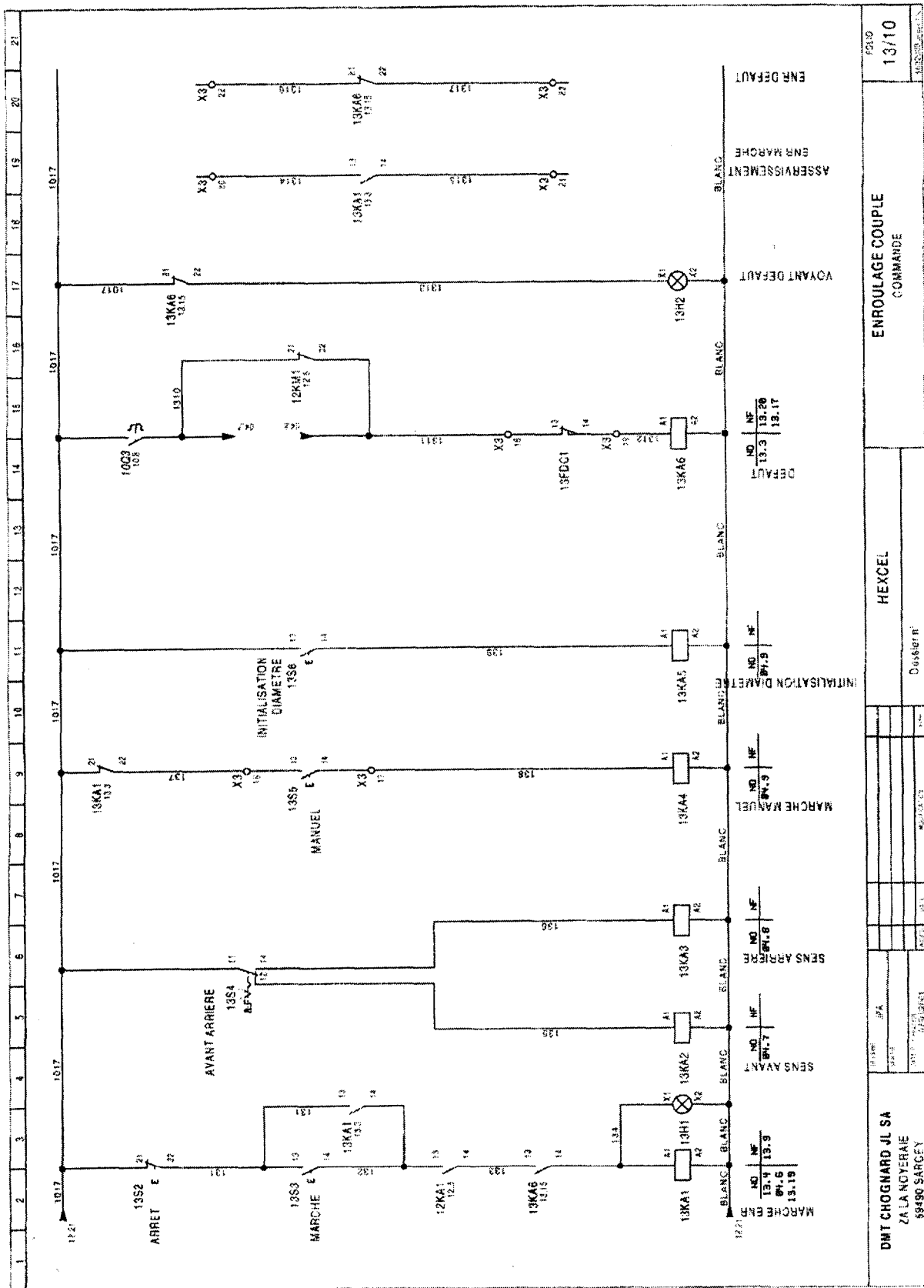
Dossier n°

DMT CHOIGNARD JL SA
ZA LA NOYERIE
63490 SARCEY

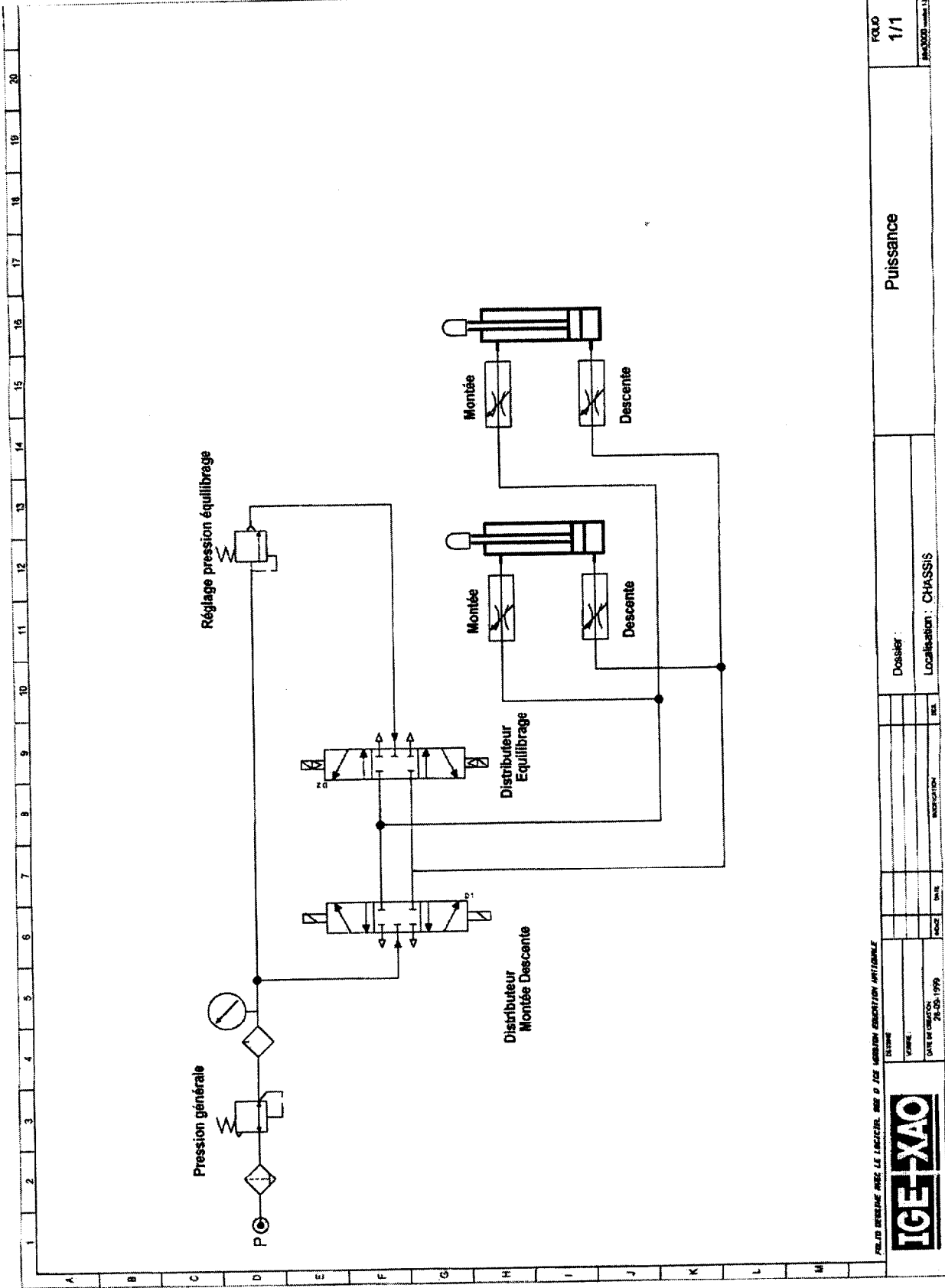
TYPE JPA
REVISION
DATE



DMT CHOIGNARD JL SA ZA LA NOYERIE 59490 SARCET		FOLIO 12/10
Dossier n°		ENROULAGE COUPLE COMMANDE
HEXCEL		



DMT CHOIGNARD JL SA
 ZA LA NOYERIE
 89490 SARCEY
 9509
 13/10
 ENROUORAGE COUPLE
 COMMANDE
 HEXCEL
 Dossier N°



FOLD
1/1
00000000000000000000

Puissance

Dossier :
Localisation : CHASSIS

PROJET DÉVELOPPÉ AVEC LE LOGICIEL SEP D'ICE - LOGICIEL D'ASSISTANCE À L'ÉLABORATION DE SCHEMAS PNEUMATIQUES

ICE-XAO

ÉCRIVRE
VERIFIER
DATE DE CRÉATION : 26/06/1999
INDICATEUR
DATE
INDICATEUR

SCHEMA PNEUMATIQUE