

SUJET

**BEP MICROTECHNIQUES
CAP MICROMECHANIQUE**

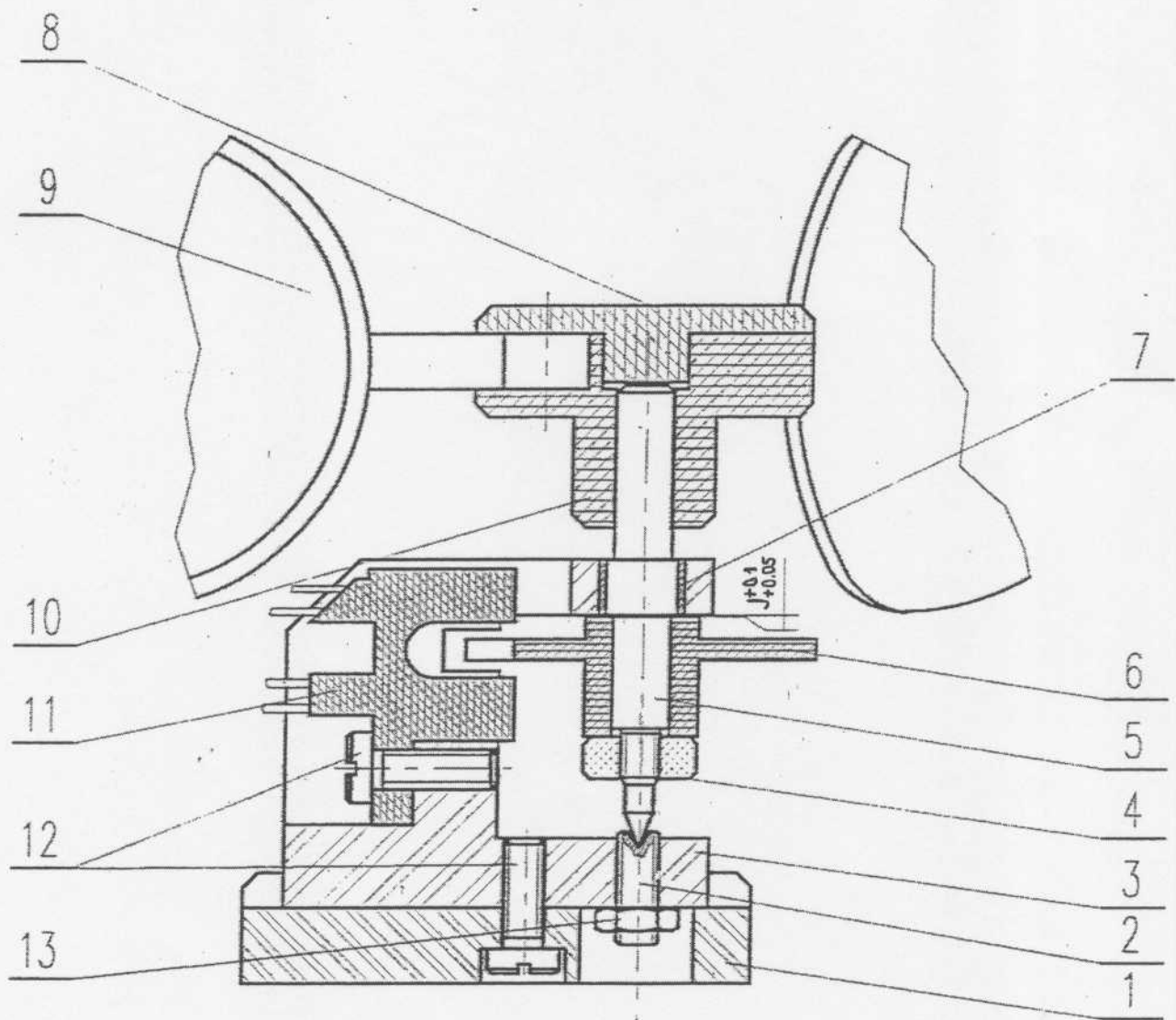
EPREUVE EP2

MISE EN OEUVRE D'UNE FABRICATION

C5-3 REALISER UN MECANISME

**TEMPS TOTAL
12H**

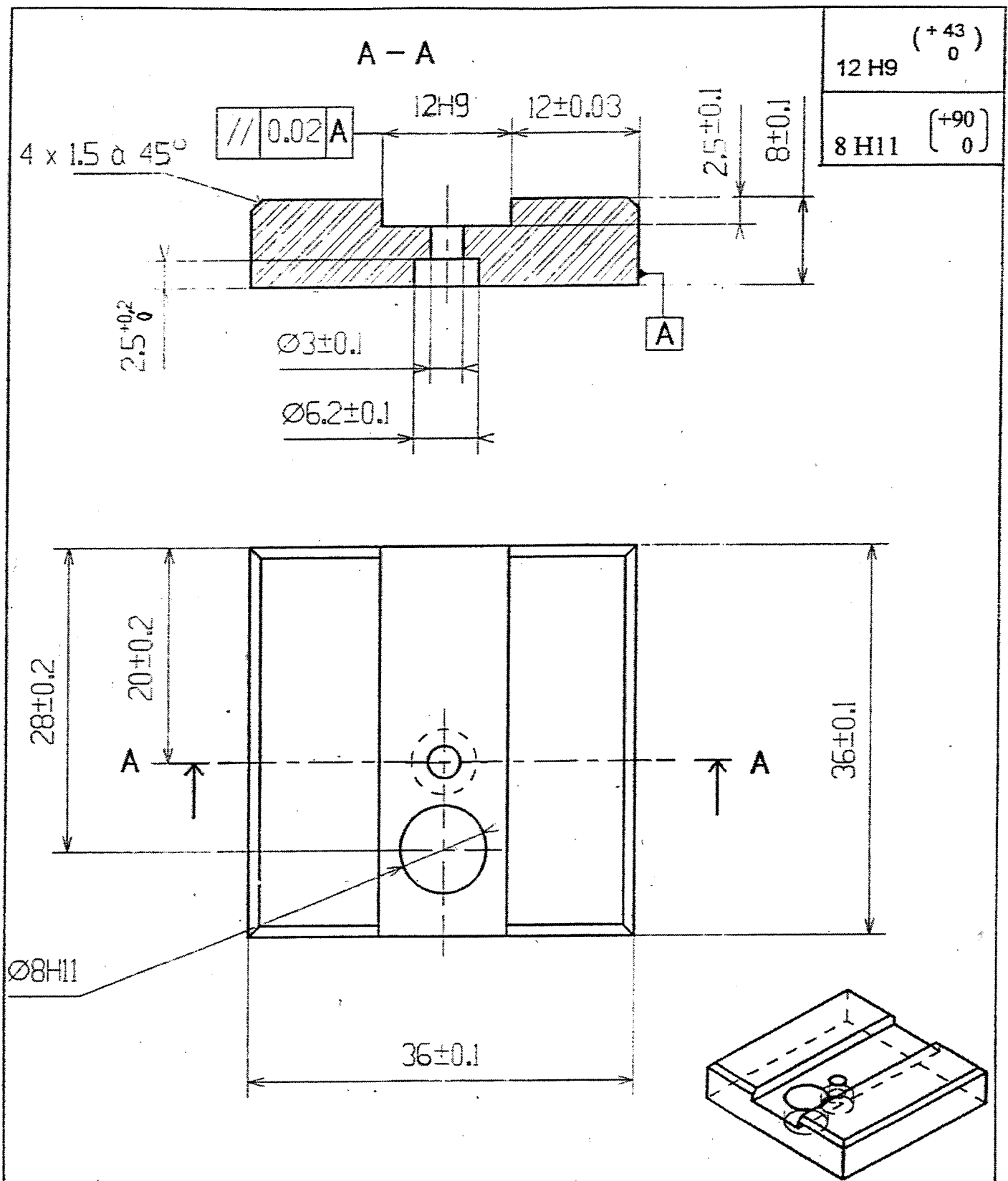
GROUPEMENT INTERACADEMIQUE II	Session 2002	
BEP MICROTECHNIQUES ET CAP MICROMECHANIQUE		
EP2 : Mise en oeuvre		
SUJET	Durée : 12 h	Coef. : BEP : 7 - CAP : 10 Page : 1/10



ANEMOMETRE

13	1	Ecrou H M2,5			Standard
12	2	Vis CS M2,5 x 8			Standard
11	1	Capteur ILS			Non-fourni
10	1	Support de pales	PVC	Barre Diam 25	
9	3	Pales	PVC		Moulées (fournies)
8	1	Couvercle	PVC	Barre Diam 25	
7	1	Bague	CuZn40 Pb3	Barre Diam 8	
6	1	Disque	PVC	Barre Diam 25	
5	1	Axe	S300 Pb	Barre Diam 6	
4	1	Ecrou	CuZn40 Pb3	Barre Diam 8	
3	1	Corps	EN AW 2017	30 x 25 x 14	
2	1	Vis HC M2,5 x 10 bout cuvette			Standard
1	1	Socle	EN AW 2017	36 x 36 x 8	
Rep	Nb	Désignation	Matière	Débit	Observations

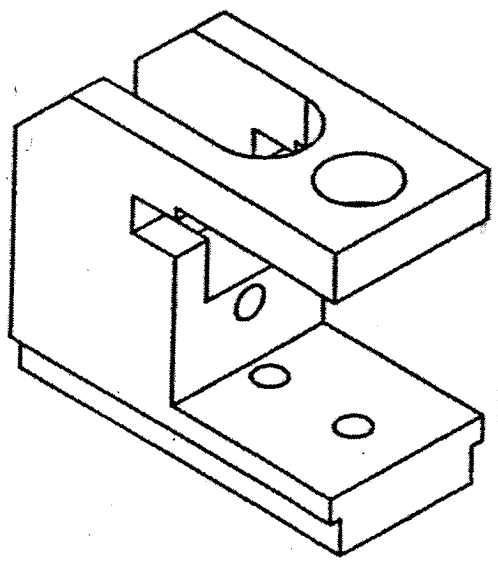
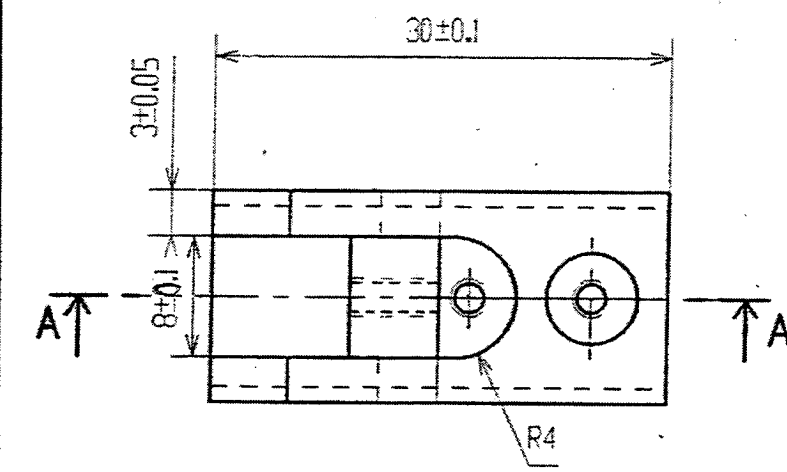
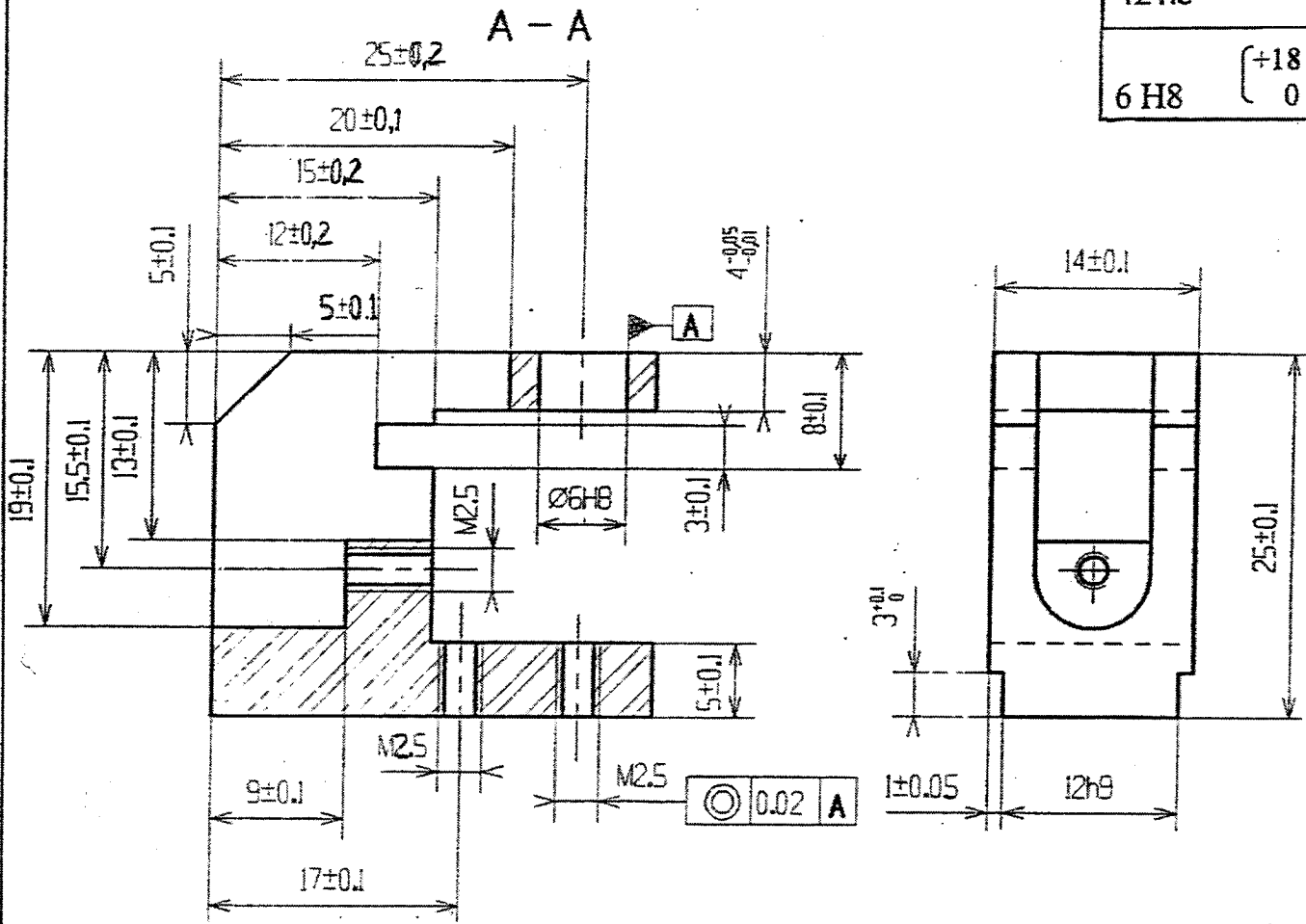
NOMENCLATURE ANEMOMETRE



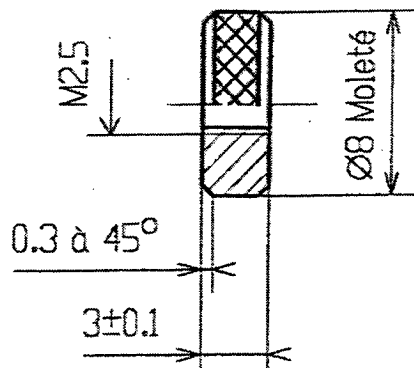
1	1	Socle	EN AW 2017	Duralumin (AU 4G)
Rep	Nb	Désignation	Matière	Observations
		ANEMOMETRE		Echelle : 2

12 h9 $\begin{pmatrix} 0 \\ -43 \end{pmatrix}$

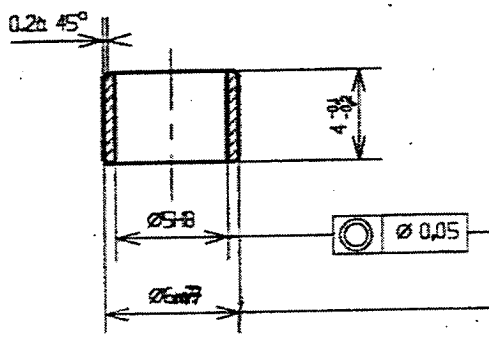
6 H8 $\begin{pmatrix} +18 \\ 0 \end{pmatrix}$



3	1	Corps	EN AW 2017	Duralumin (AU 4G)
Rep	Nb	Désignation	Matière	Observations
		ANEMOMETRE		Echelle : 2



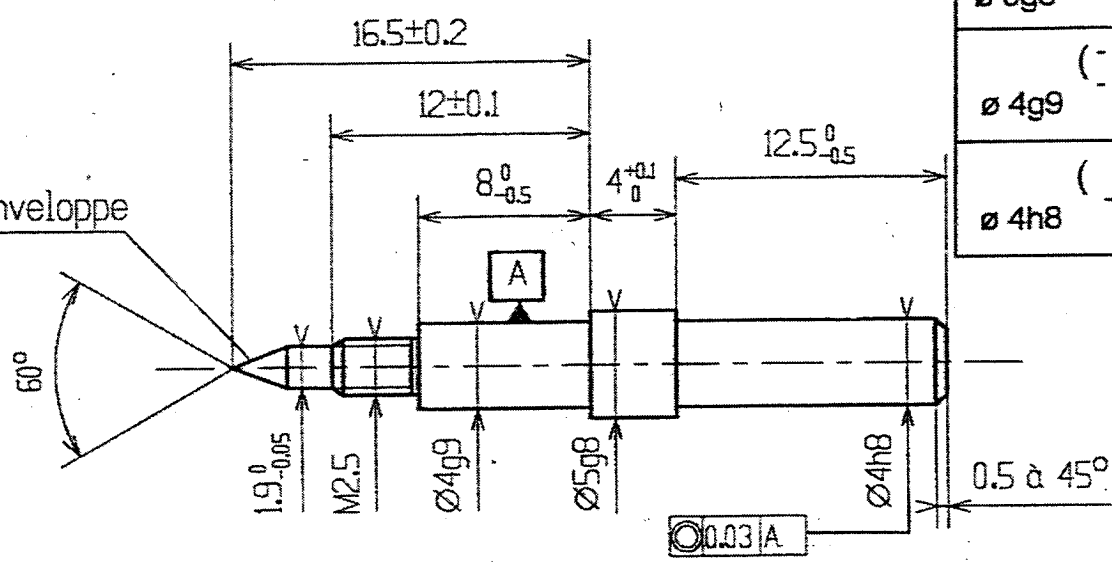
4	1	Ecrou	Cu Zn40 Pb3	Barre Diam 8
---	---	-------	-------------	--------------



$\begin{matrix} (+12) \\ \text{Ø 6m7} \\ 0 \end{matrix}$
$\begin{matrix} (+18) \\ \text{5 H8} \\ 0 \end{matrix}$

7	1	Bague	Cu Zn40 Pb3	Barre Diam 8
---	---	-------	-------------	--------------

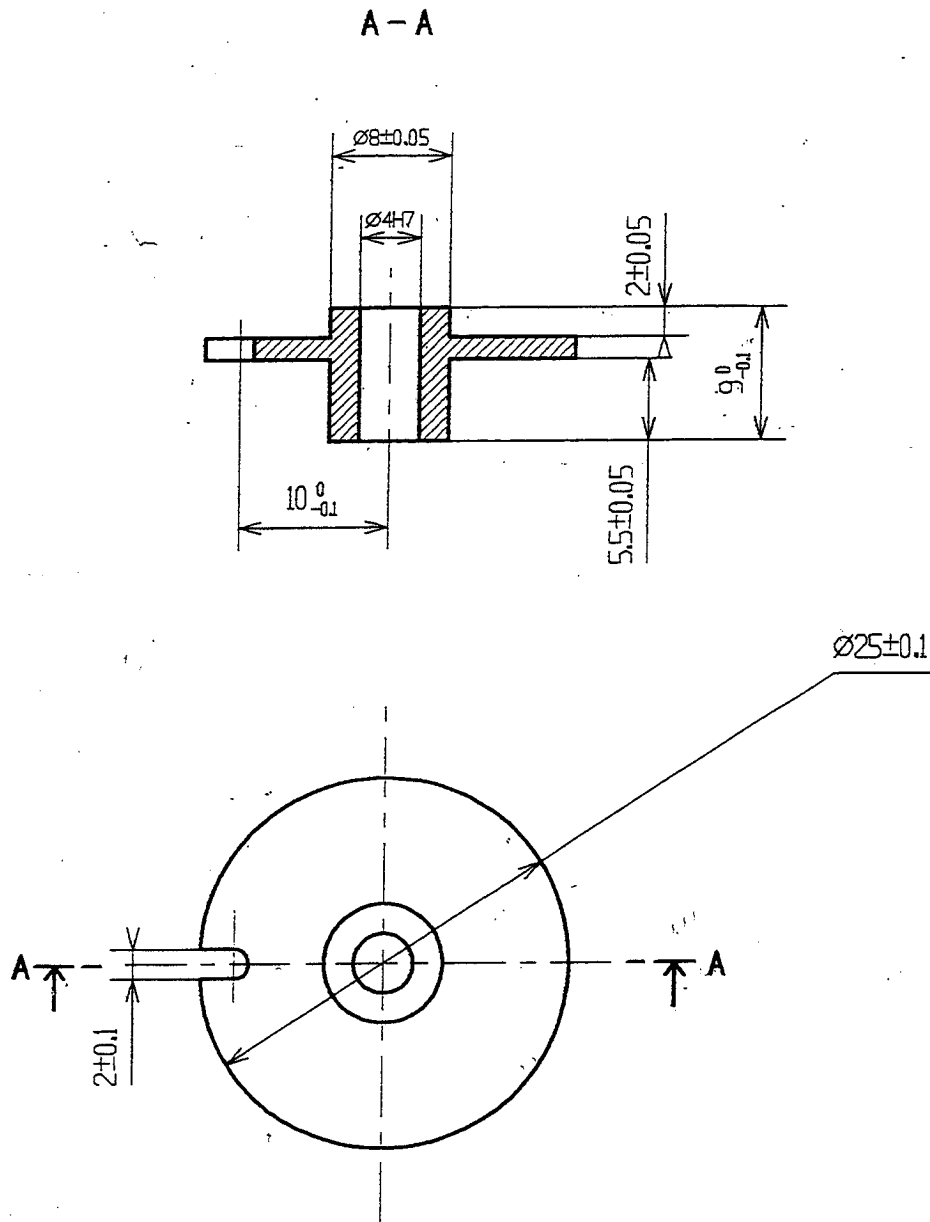
travail d'enveloppe



$\begin{matrix} (-4) \\ \text{Ø 5g8} \\ -22 \end{matrix}$
$\begin{matrix} (-4) \\ \text{Ø 4g9} \\ -34 \end{matrix}$
$\begin{matrix} 0 \\ \text{Ø 4h8} \\ -18 \end{matrix}$

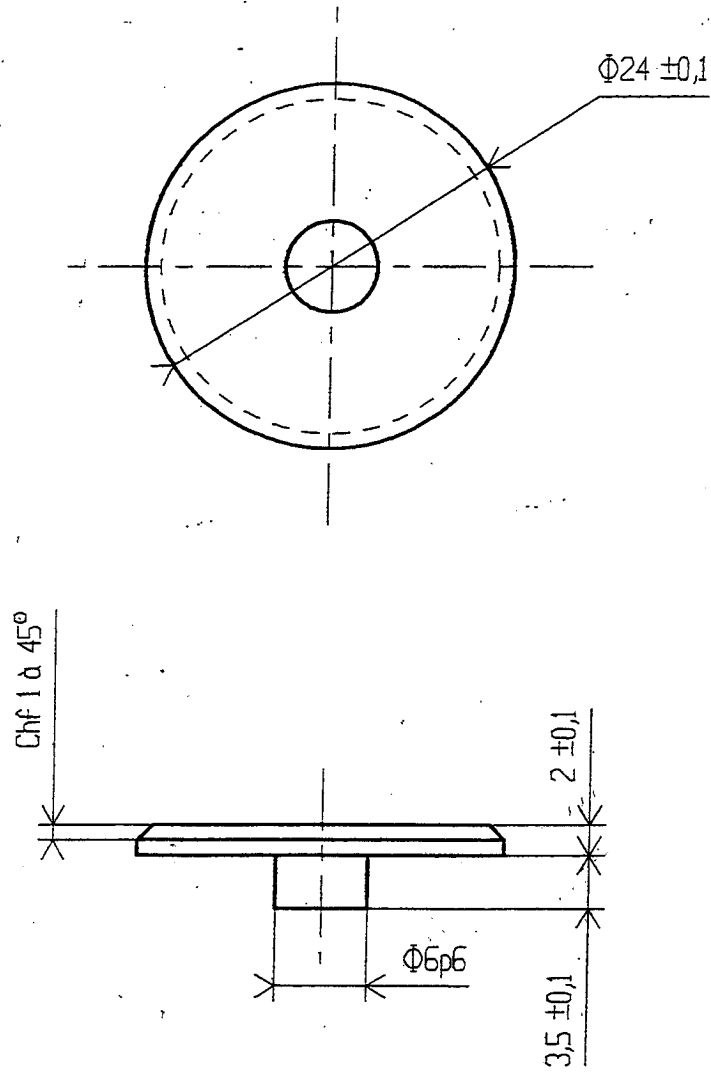
5	1	Axe	S 300 Pb	Barre Diam 6
---	---	-----	----------	--------------

Rep	Nb	Désignation	Matière	Observations
		ANEMOMETRE		Echelle : 3



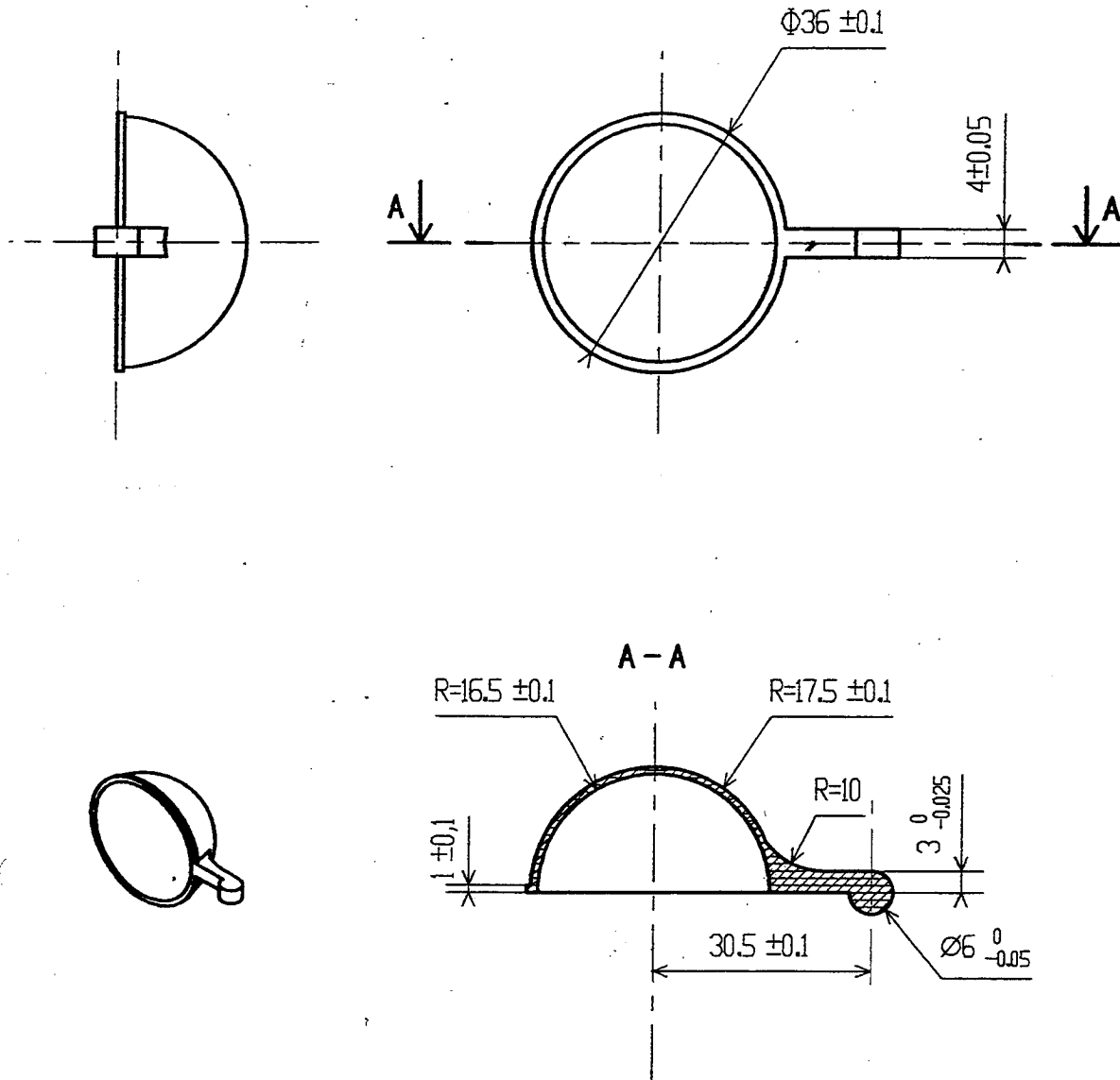
6	1	Disque	PVC	
Rep	Nb	Désignation	Matière	Observations
ANEMOMETRE			Echelle : 2	

∅ 6p6 (+20 / +12)



8	1	Couvercle	PVC	
Rep	Nb	Désignation	Matière	Observations
ANEMOMETRE			Echelle : 2	

FOURNIE TERMINEE

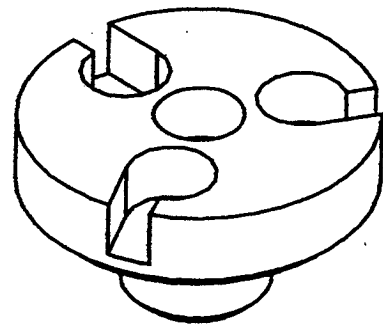
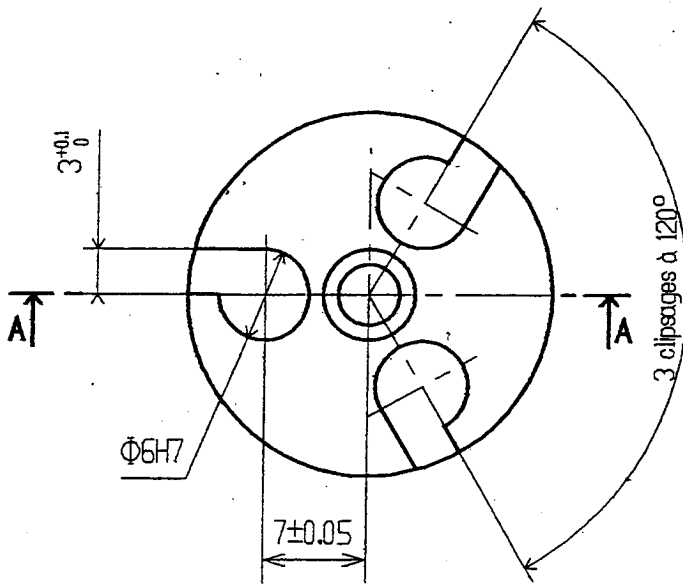
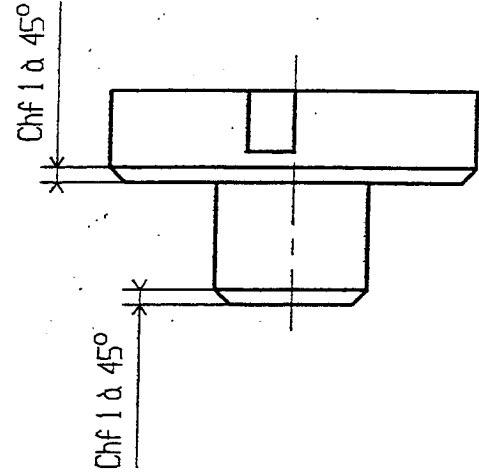
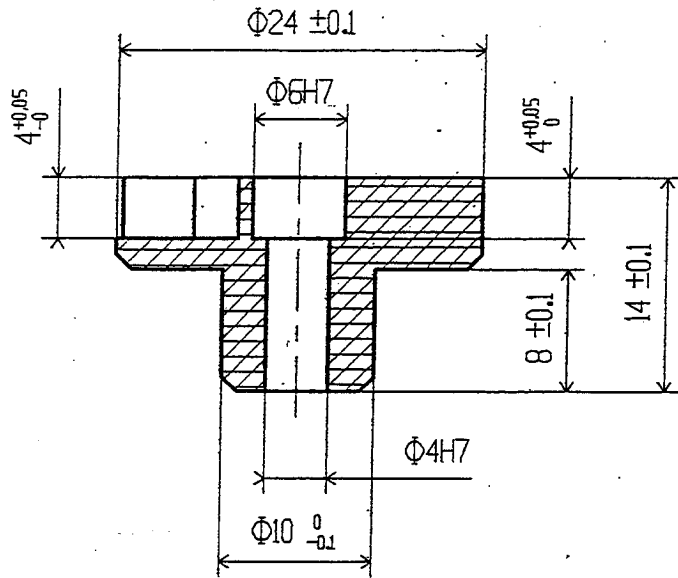


9	3	Pale		Moulé
Rep	Nb	Désignation	Matière	Observations
			ANEMOMETRE	Echelle : 1

FOURNIE TERMINEE

∅ 6H7 $\begin{pmatrix} +12 \\ 0 \end{pmatrix}$

A-A



10	1	Support de pâles	PVC	
Rep	Nb	Désignation	Matière	Observations
ANEMOMETRE				Echelle : 2