

**BEP MAINTENANCE DE VÉHICULES AUTOMOBILES dominante A**

**CAP MÉCANICIEN EN MAINTENANCE DE VÉHICULES option A**

**Véhicules Particuliers**

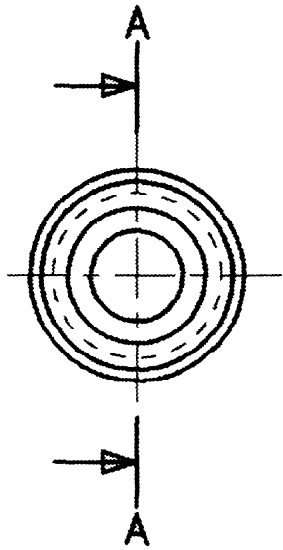
# **EP1-1**

**Communication technique**

**DOSSIER CORRIGE**

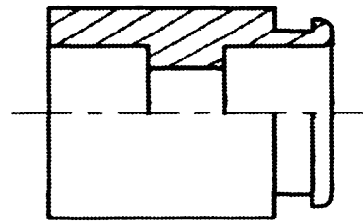
|   |  |                            |                   |
|---|--|----------------------------|-------------------|
| <b>BEP Maintenance de Véhicules Automobiles</b><br><b>CAP Mécanicien en Maintenance de Véhicules</b><br>option Véhicules Particuliers | <b>Session 2002</b>                          |                            |                   |
|   | <b>Épreuve EP1 : Communication technique</b> |                            |                   |
|   | <b>Durée : 1h30</b>                          | <b>Coef : CAP 4, BEP 4</b> | <b>Page 1 / 2</b> |

Pièce 19



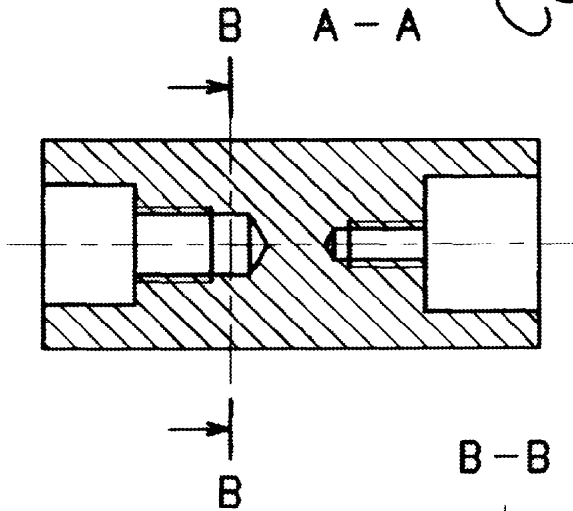
A-A

1°)



CORRIGE

Pièce 20-a

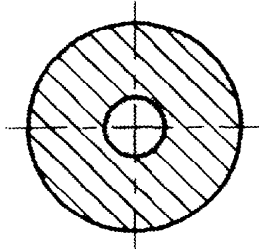


A-A



M 10

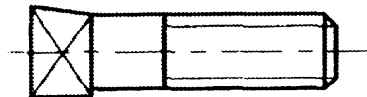
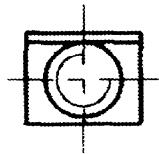
B-B



2-1°)

2-2°)

Pièce 32



3°)