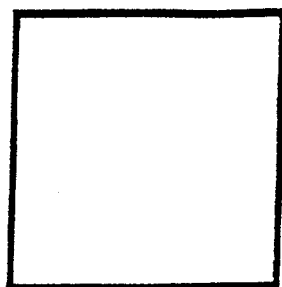


ANNEXES

DEPARTEMENT DE

COMMUNE DE

- ZAC DE



MAITRE D'OUVRAGE :
Société Immobilière

DOSSIER DCE

**PROJET DE CONSTRUCTION
DE 39 LOGEMENTS L.A.D.**

39 LOGEMENTS L.A.D.

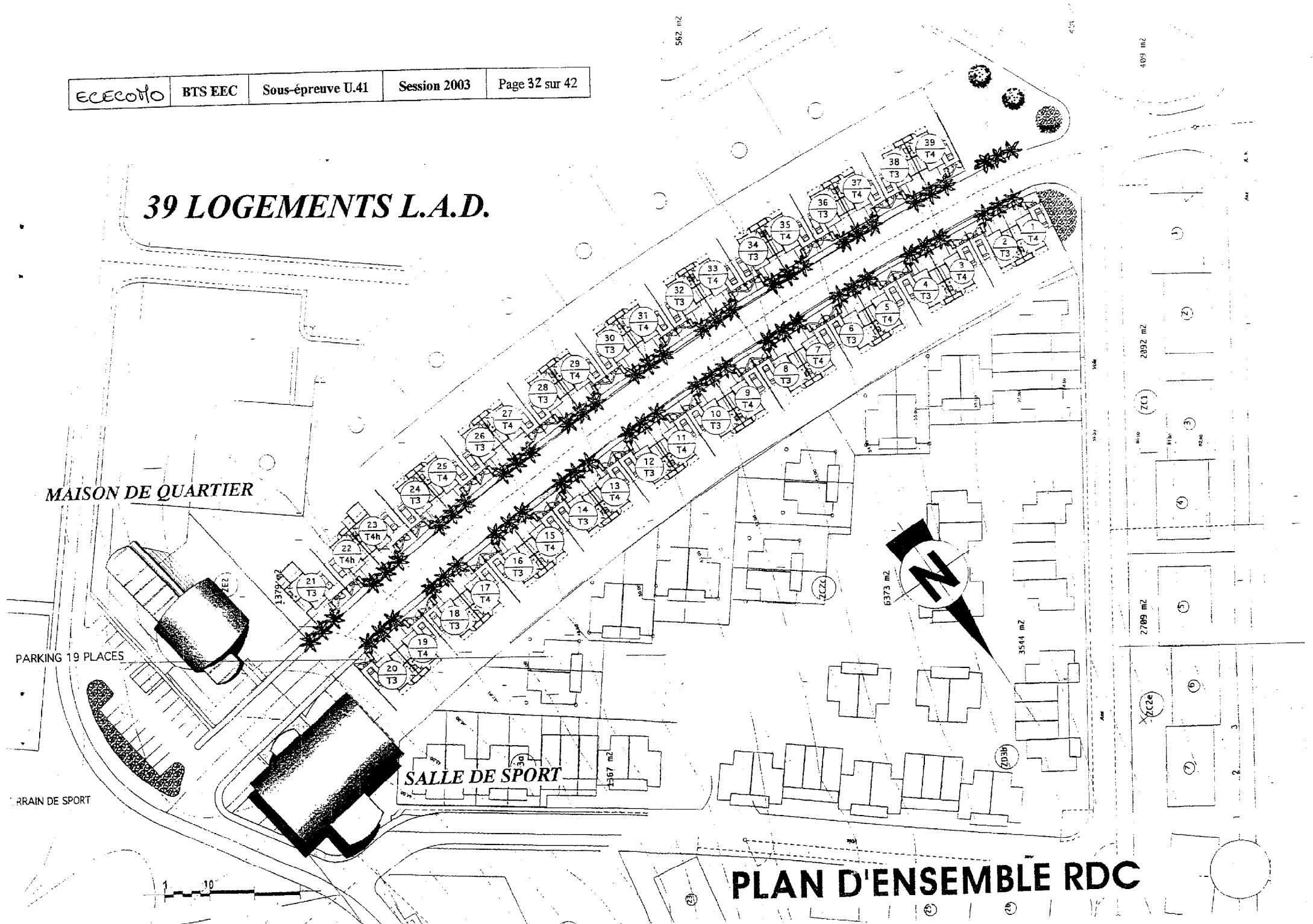
MAISON DE QUARTIER

PARKING 19 PLACES

ARRAIN DE SPORT

SALLE DE SPORT

PLAN D'ENSEMBLE RDC



562 m2

423 m2

2000 m2

2892 m2

2709 m2

3232 m2

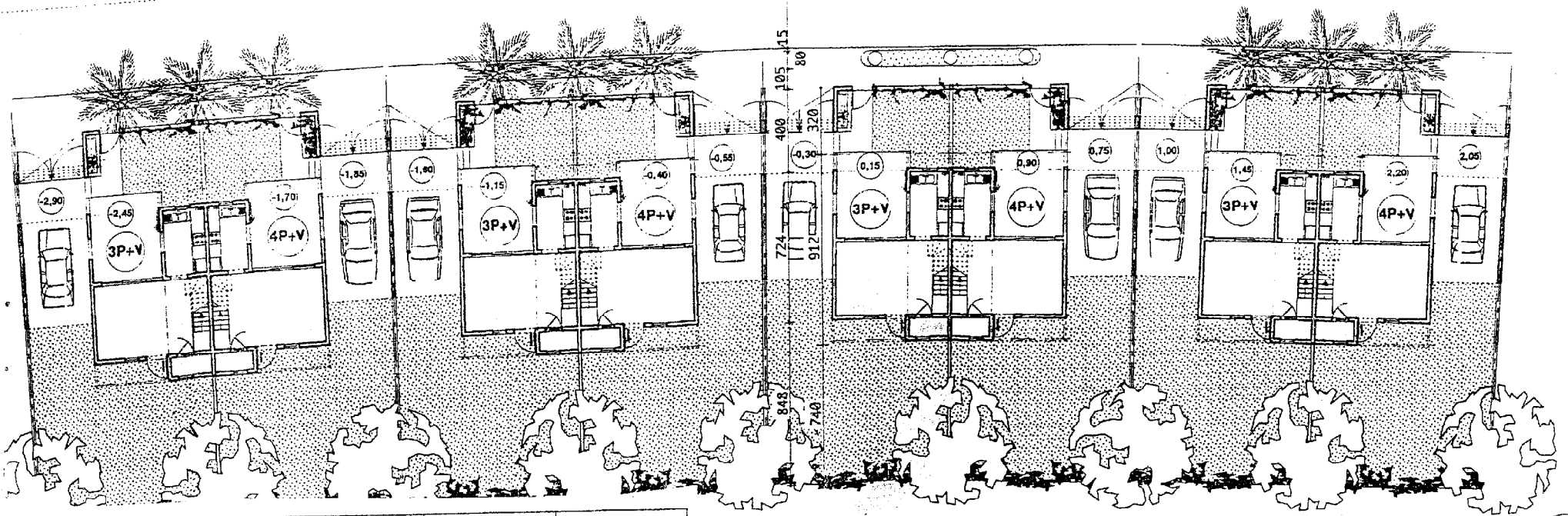
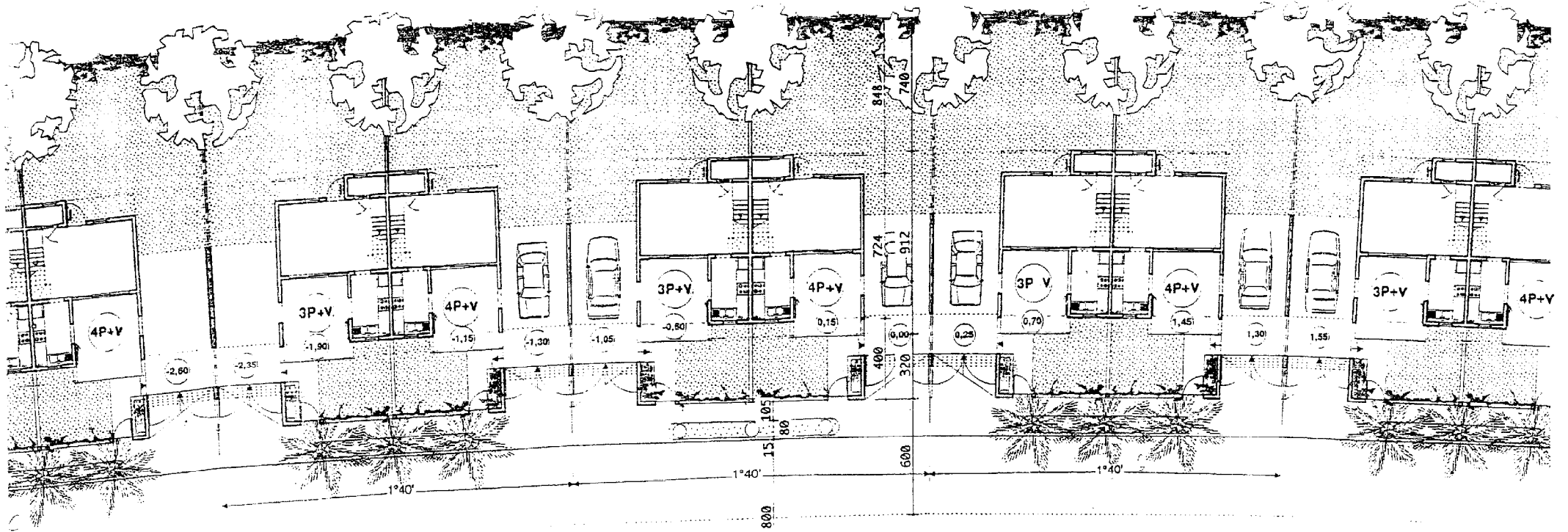
6373 m2

3544 m2

1387 m2

1379 m2

10



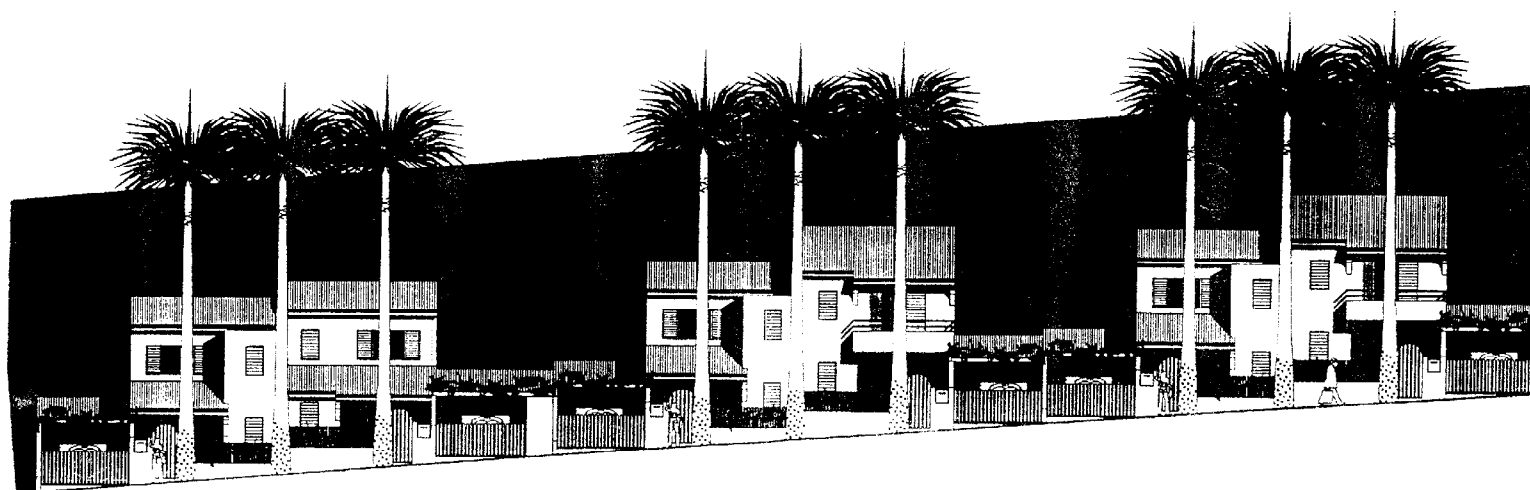
Echelle : 1/200

PRINCIPE D'ASSEMBLAGE

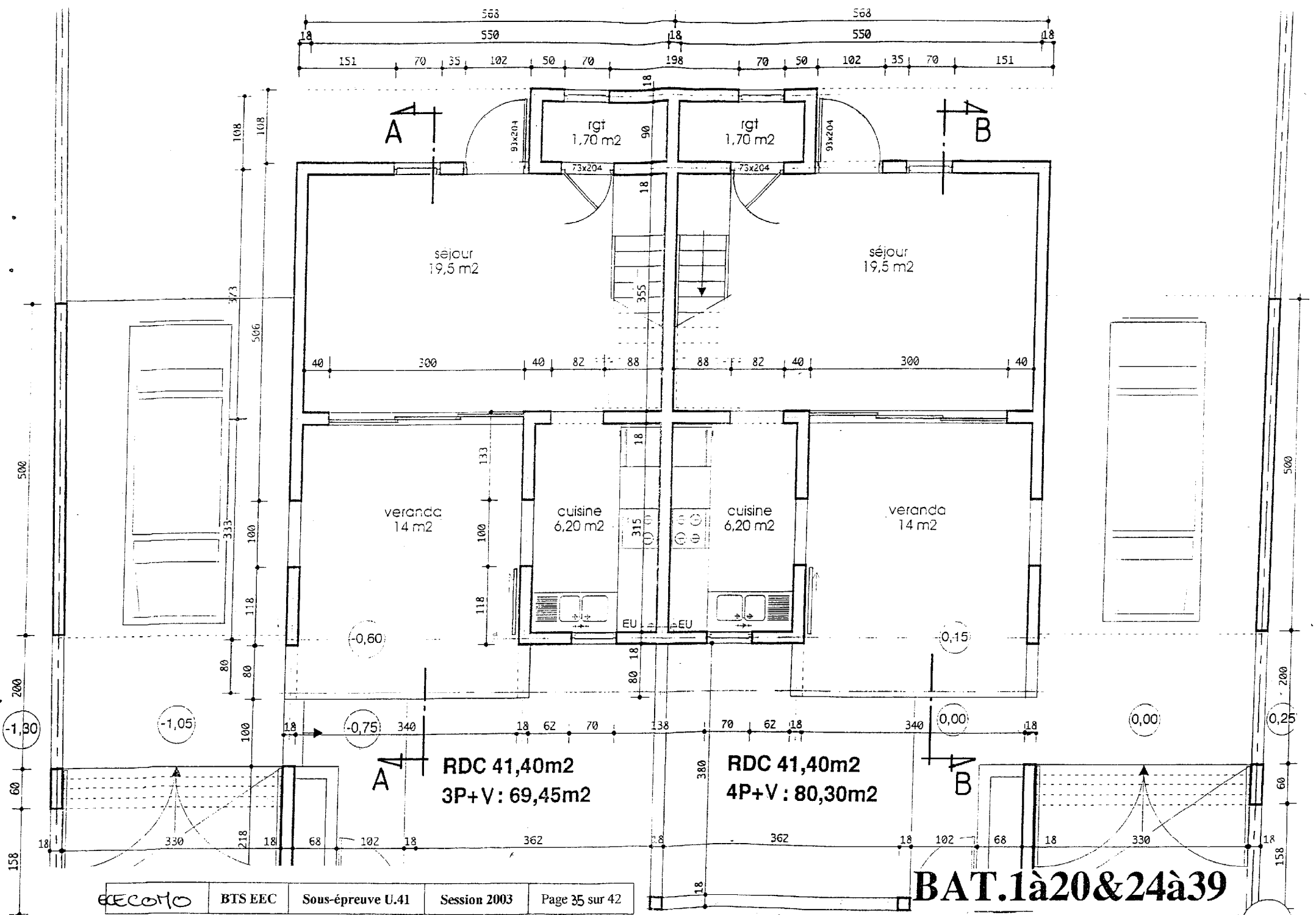
FACADE DES T3+V&T4+V Handicapé

FAÇADE DES T3+V&T4+V

FAÇADE DES T3+V&T4+V



Façade sur allée des Palmiers



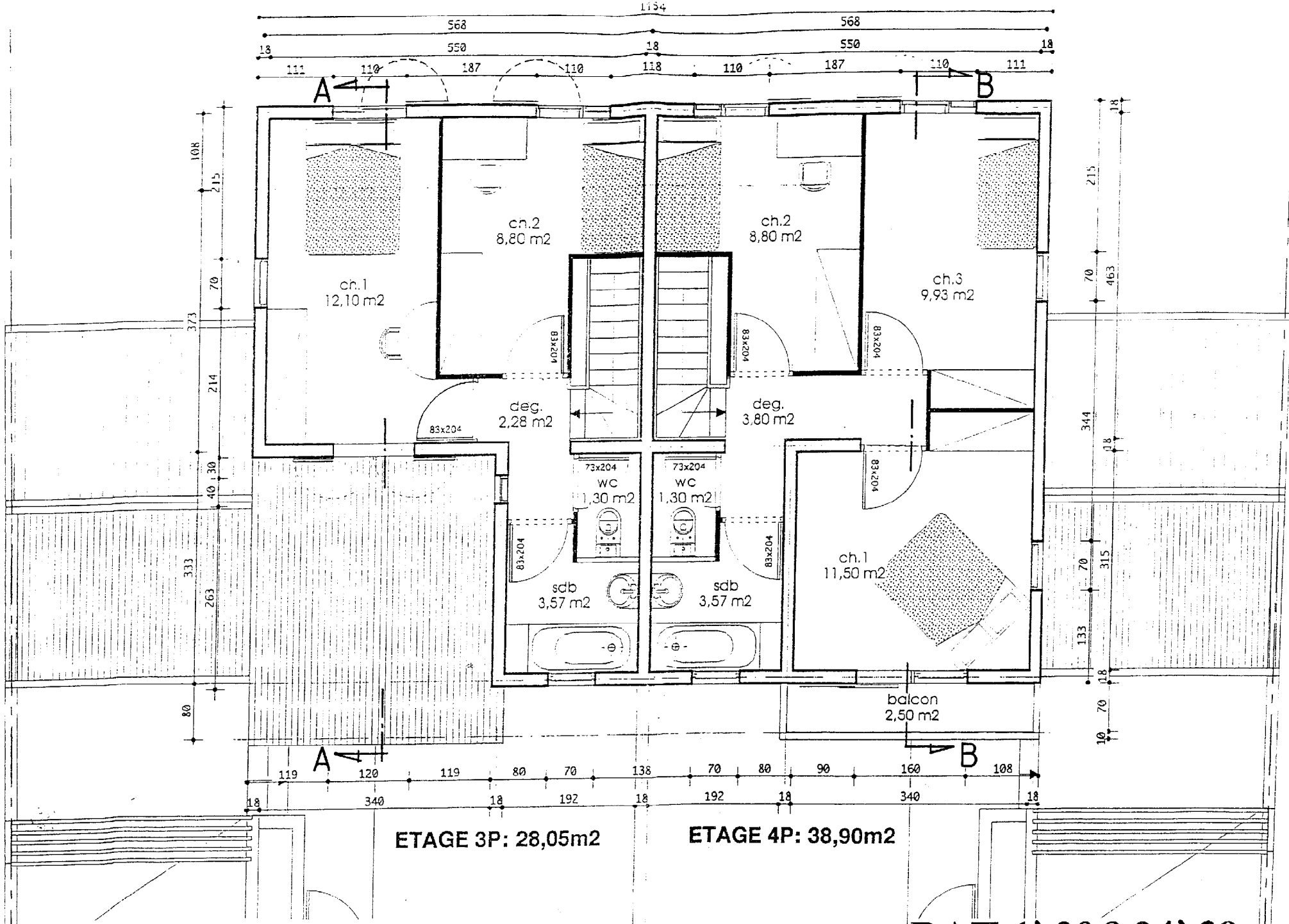
RDC 41,40m²
3P+V : 69,45m²

RDC 41,40m²
4P+V : 80,30m²

Echelle 1/50

Echelle 1/50

BAT.1à20&24à39
VUE EN PLAN DU RDC



BAT.1à20&24à39

VUE EN PLAN DE L'ETAGE