

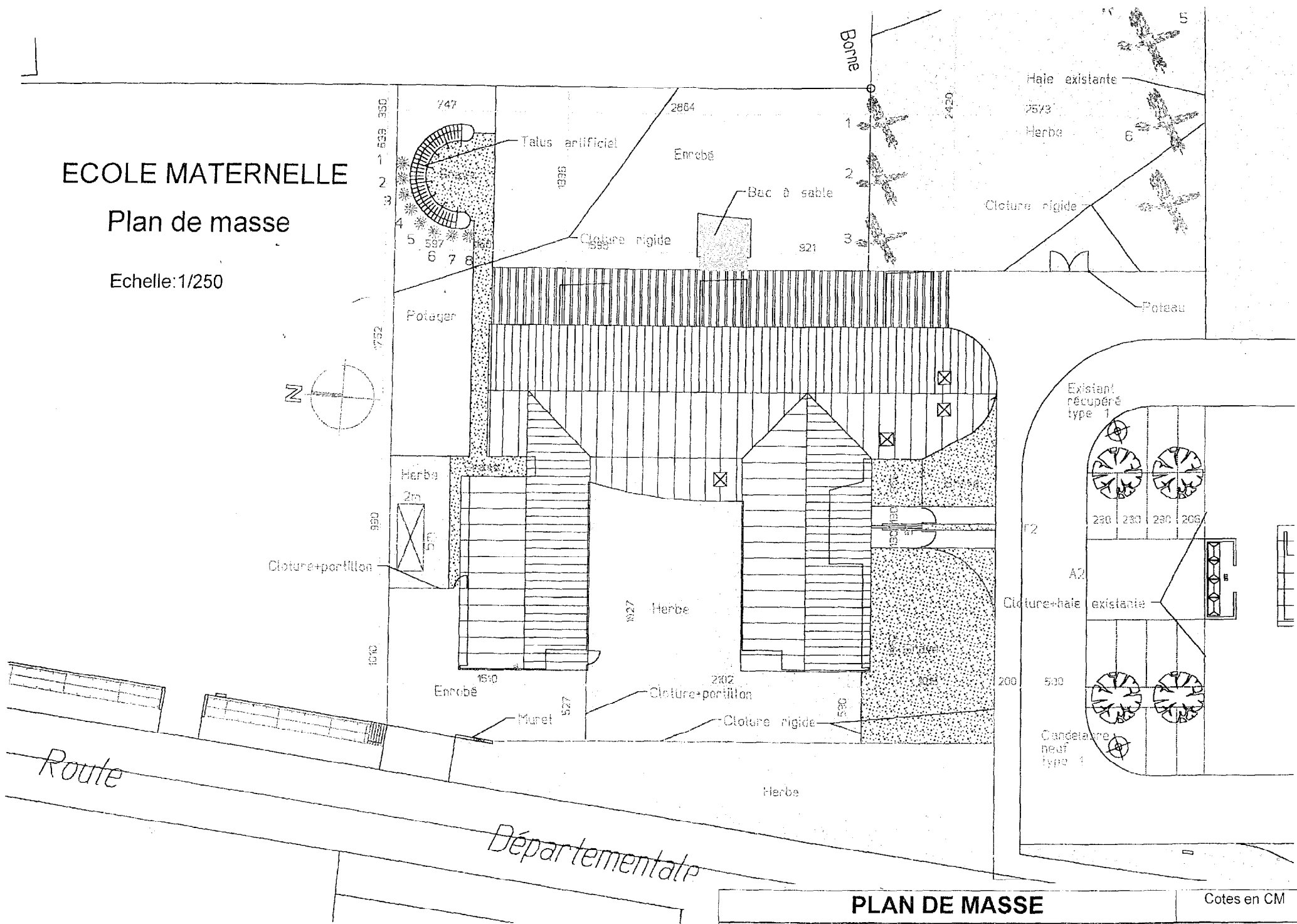
ECOLE MATERNELLE

<b>PERSPECTIVE</b>				
ECDOUV	B.T.S. E.E.C.	Sous-épreuve U.52	Session 2003	Page 12 sur 35

# ECOLE MATERNELLE

## Plan de masse

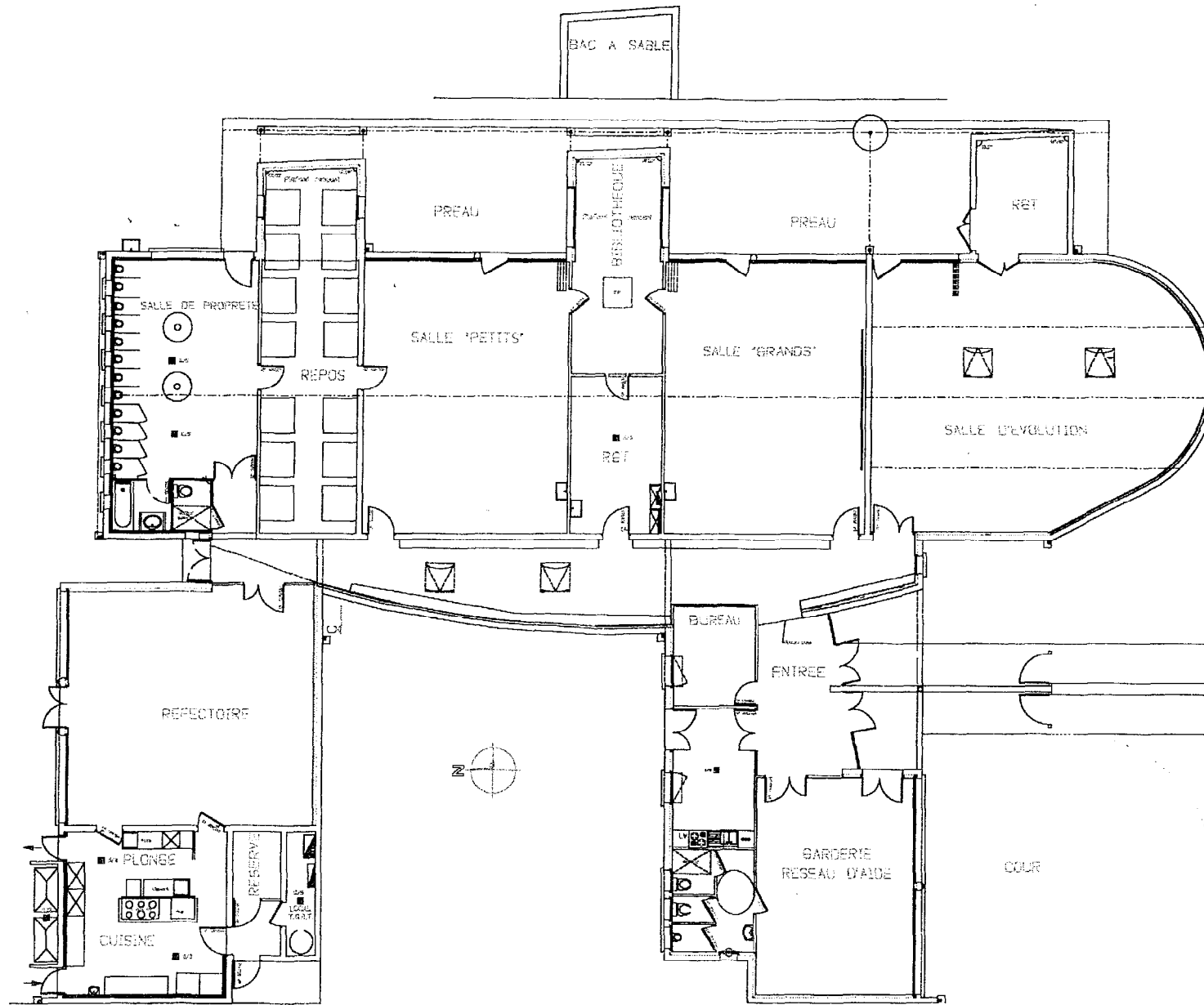
Echelle: 1/250



<b>PLAN DE MASSE</b>			Cotes en CM
ECDouv	B.T.S. E.E.C.	Sous-épreuve U.52	Session 2003 Page 13 sur 35

Echelle: 1/150  
(Cotes en cm)

# REZ DE CHAUSSEE

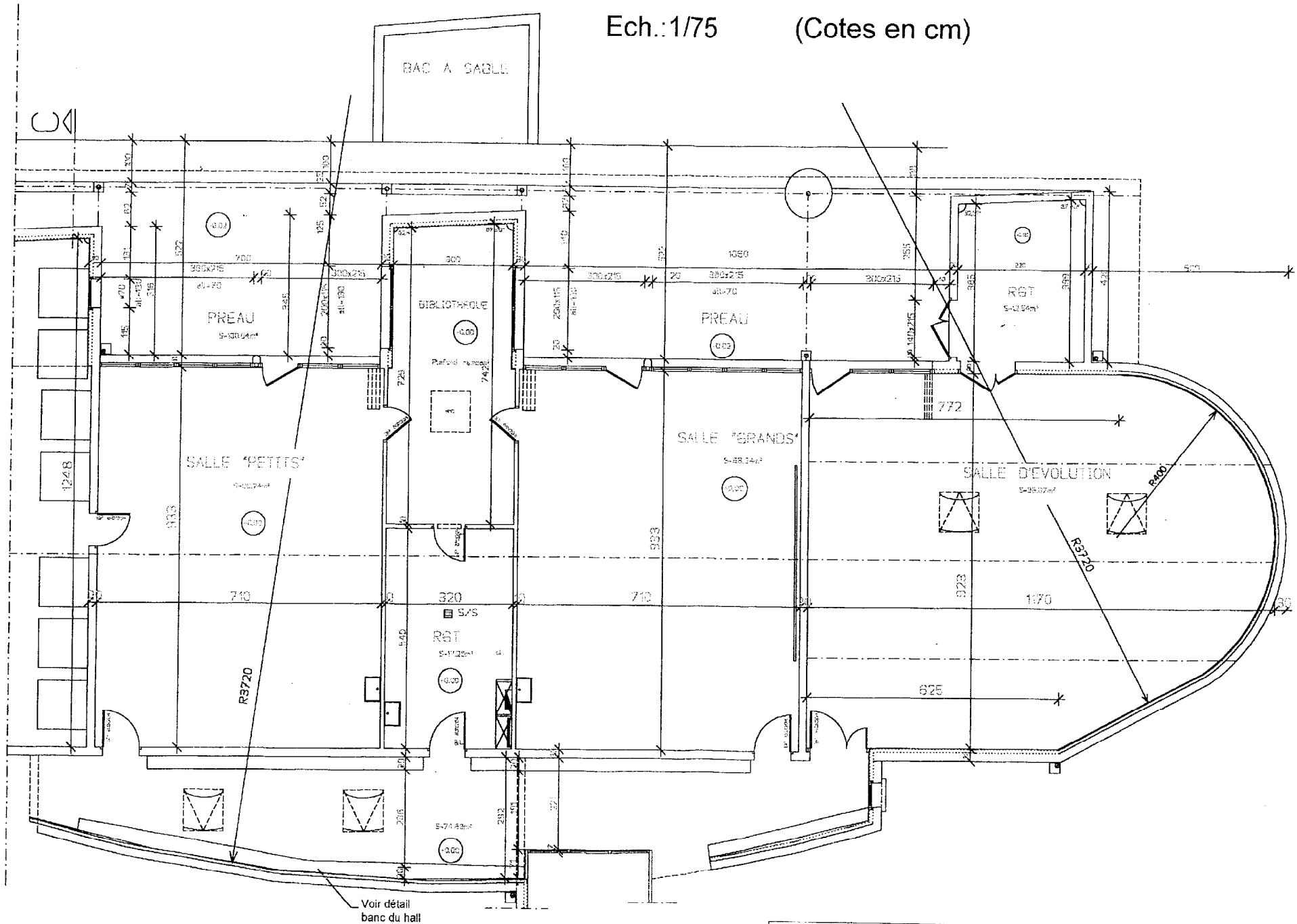


<b>REZ DE CHAUSSEE</b>			Cotes en CM
ECDouv	B.T.S. E.E.C.	Sous-épreuve U.52	Session 2003 Page 14 sur 35

# DETAIL DES PARTIES COURBES

Ech.:1/75

(Cotes en cm)



Zone d'étude A2

**DETAIL DES PARTIES COURBES**

Cotes en CM

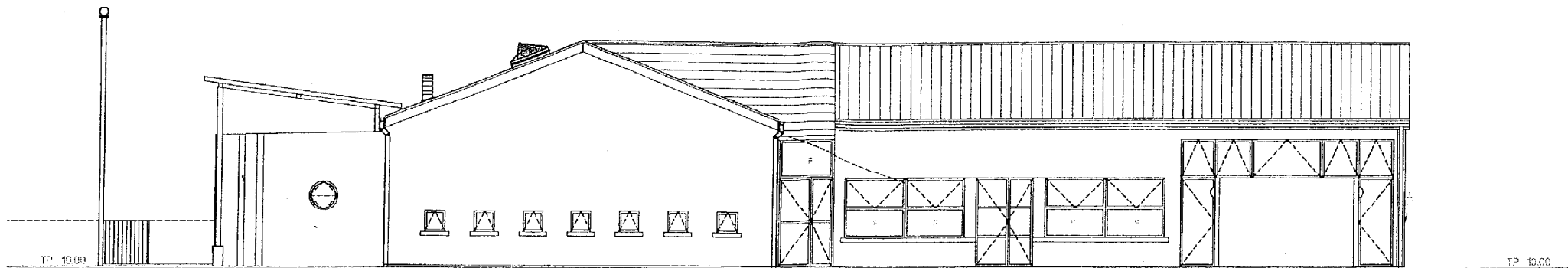
ECD OUV

B.T.S. E.E.C.

Sous-épreuve U.52

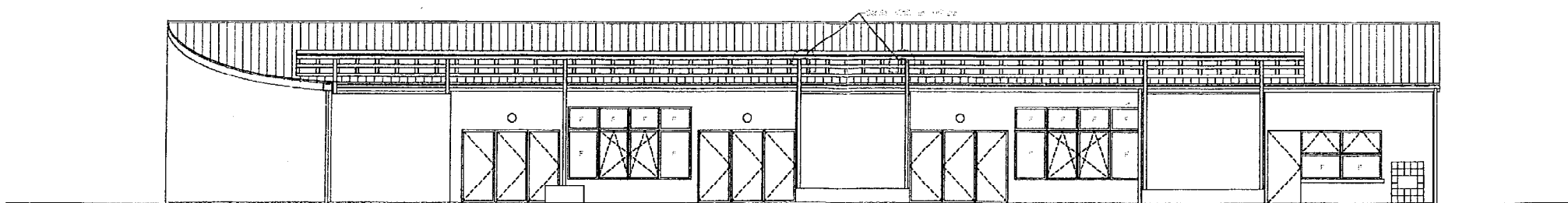
Session 2003 Page 15 sur 35





Façade nord

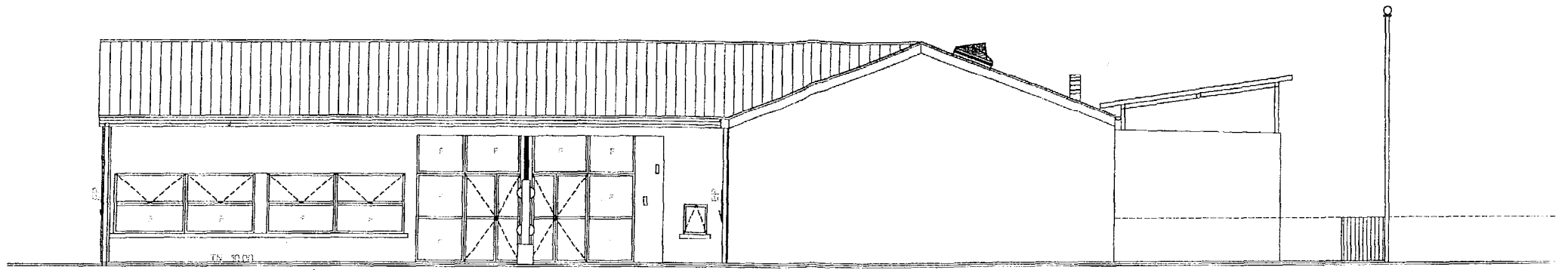
Echelle:1/100



Façade est

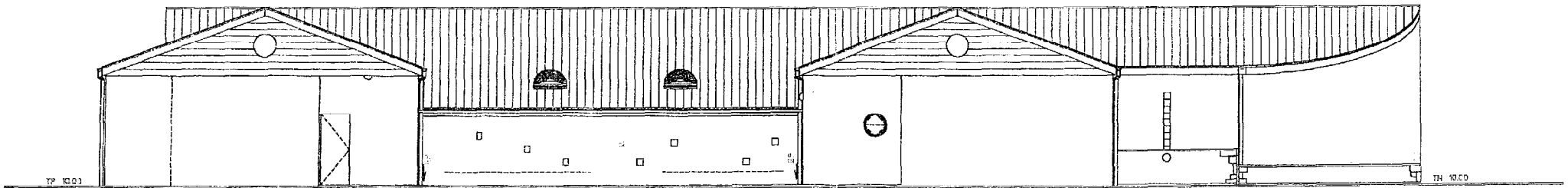
Echelle:1/125

ECOLE MATERNELLE



Façade sud

Echelle:1/100



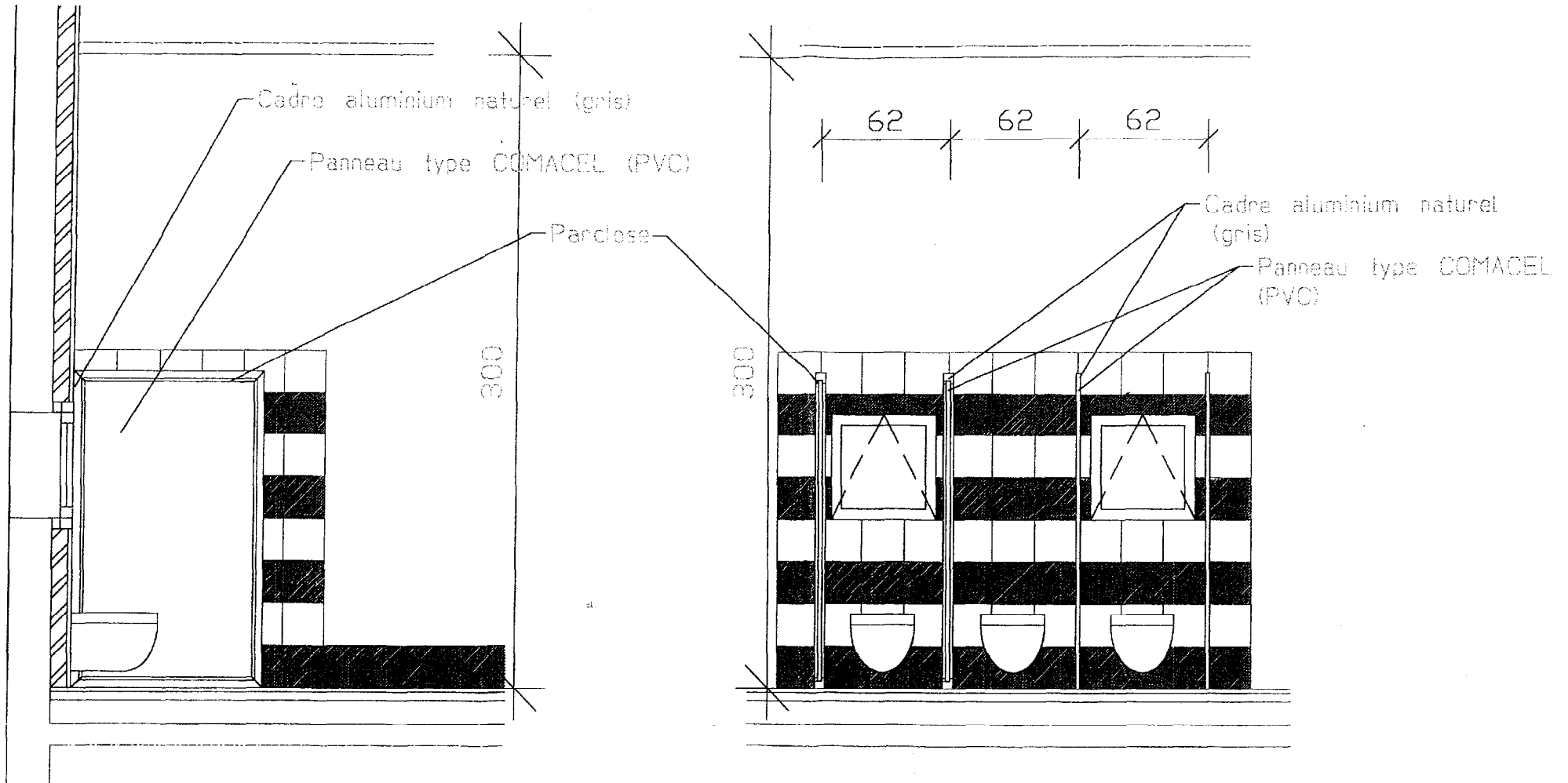
Façade ouest

Echelle:1/125

ECOLE MATERNELLE

# DETAIL SALLE DE PROPRETE

Echelle : 1/20  
(Cotes en cm)



DETAIL SALLE de PROPRETE

Cotes en CM

E C O U V

B.T.S. E.E.C.

Sous-épreuve U.52

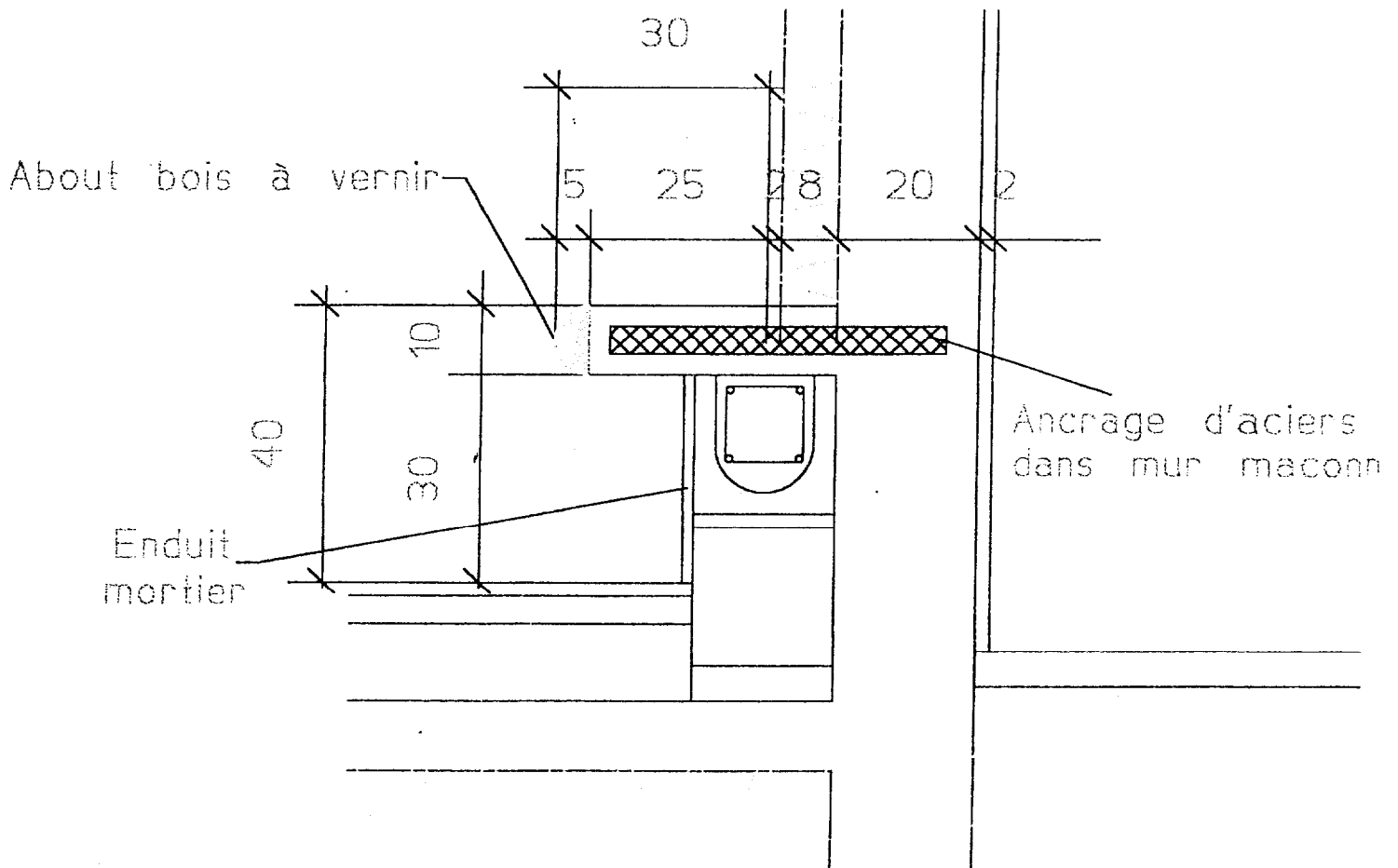
Session 2003

Page 19 sur 35



# DETAIL BANC DU HALL

Echelle : 1/10  
(Cotes en cm)



**DETAIL BANC du HALL**

Cotes en CM

ECDOUV

B.T.S. E.E.C.

Sous-épreuve U.52

Session 2003

Page 20 sur 35