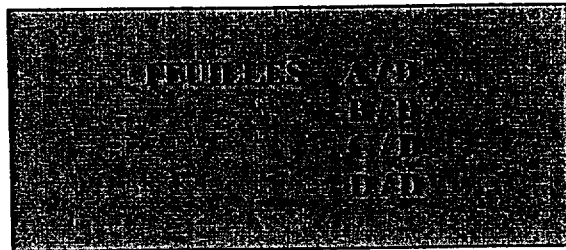


**C.A.P. Métiers de la pierre**

**EPREUVE EP 1**

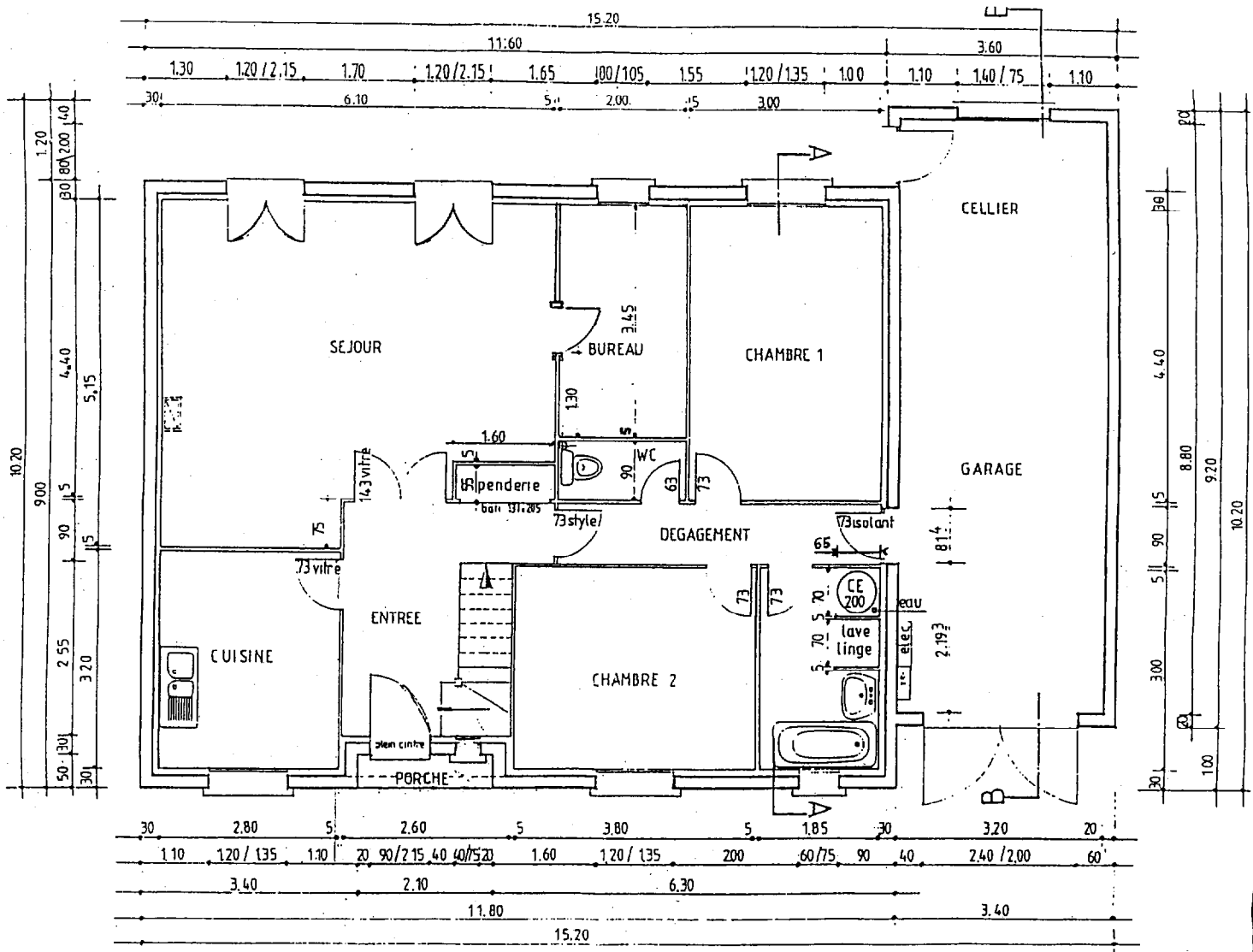
# **DOSSIER TECHNIQUE**

Ce dossier comporte 4 feuilles

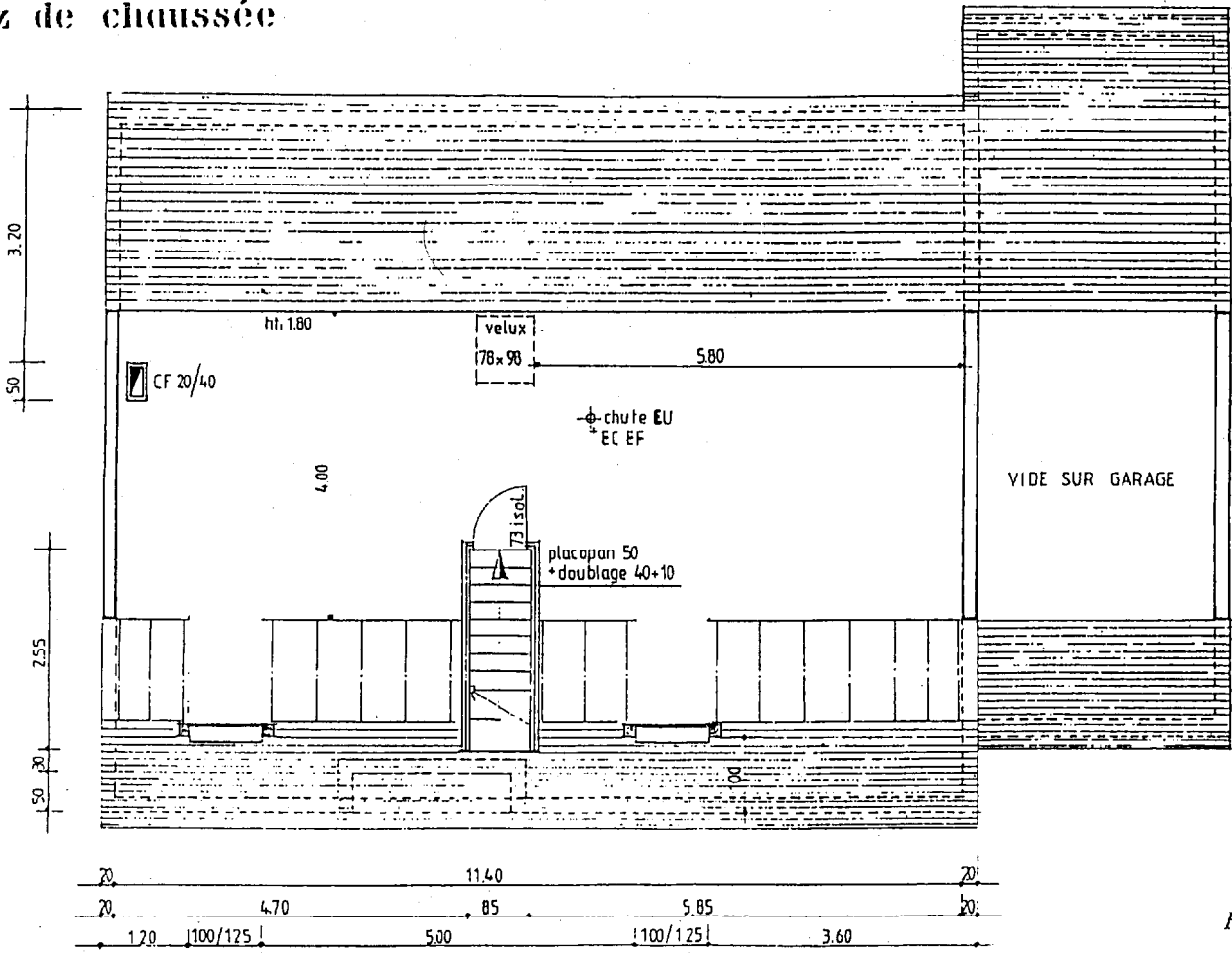


<b>GROUPEMENT INTERACADEMIQUE II</b>	<b>CAP METIERS DE LA PIERRE</b>
<b>SECTEUR 8 - BATIMENT</b>	

<b>SESSION 2003</b>	<b>CODE</b>	<b>FORME</b>	<b>DUREE</b>	<b>TECHNOLOGIE et ANALYSE de travail</b>	<b>Coeff.</b>	<b>4</b>
	<b>EP 1</b>	<b>Ecrite</b>	<b>4 H</b>			

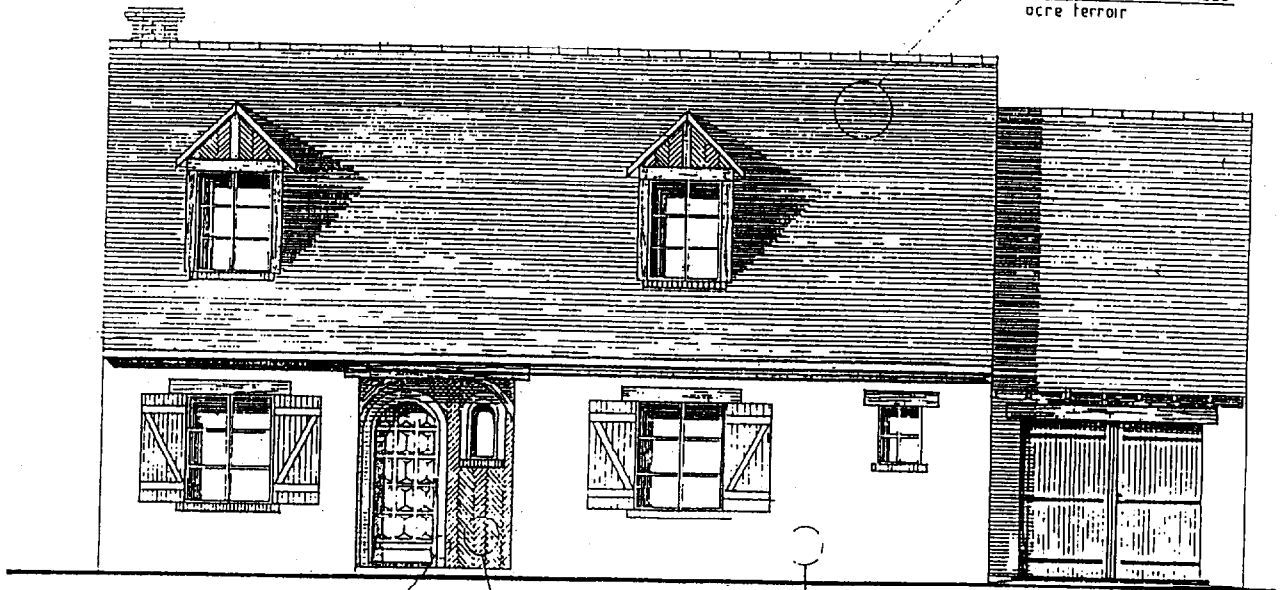


rez de chaussée



étage

TUILES ST MARTIN RAINUREES  
ocre ferroux

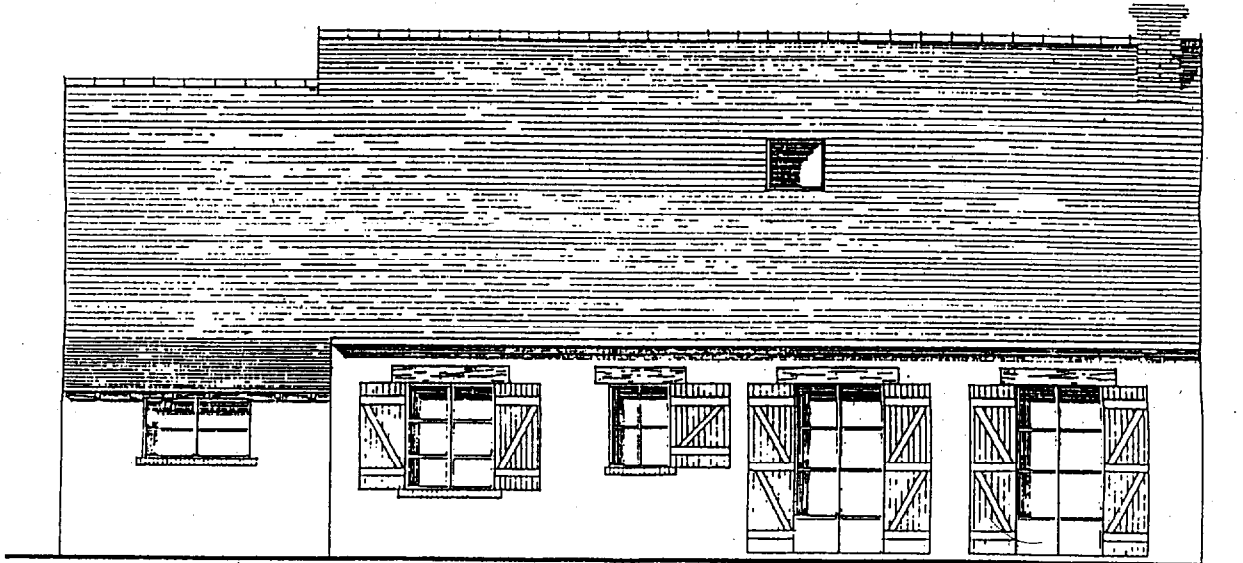


BANDEAU TON PIERRE

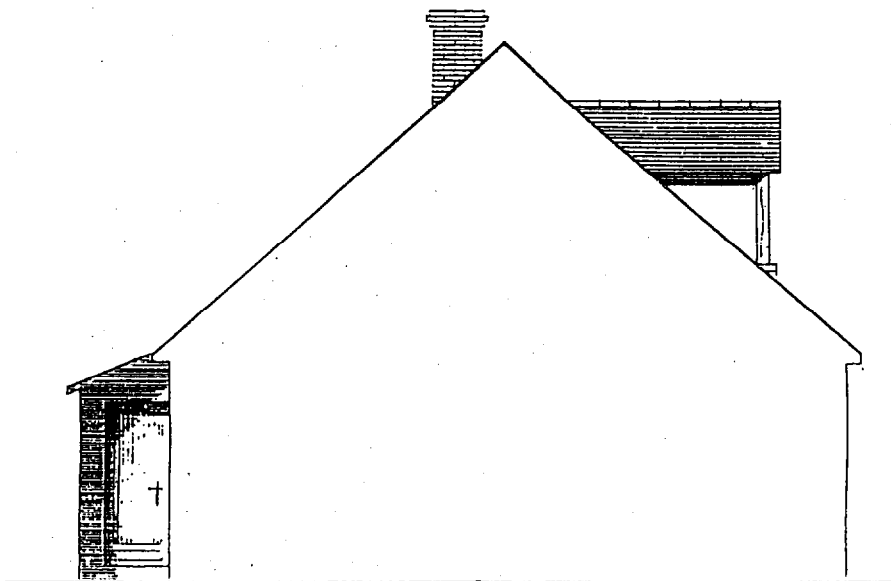
PLAQUETTE BRIQUE

ENDUIT BEIGE ROSÉ

FACADE NORD-EST



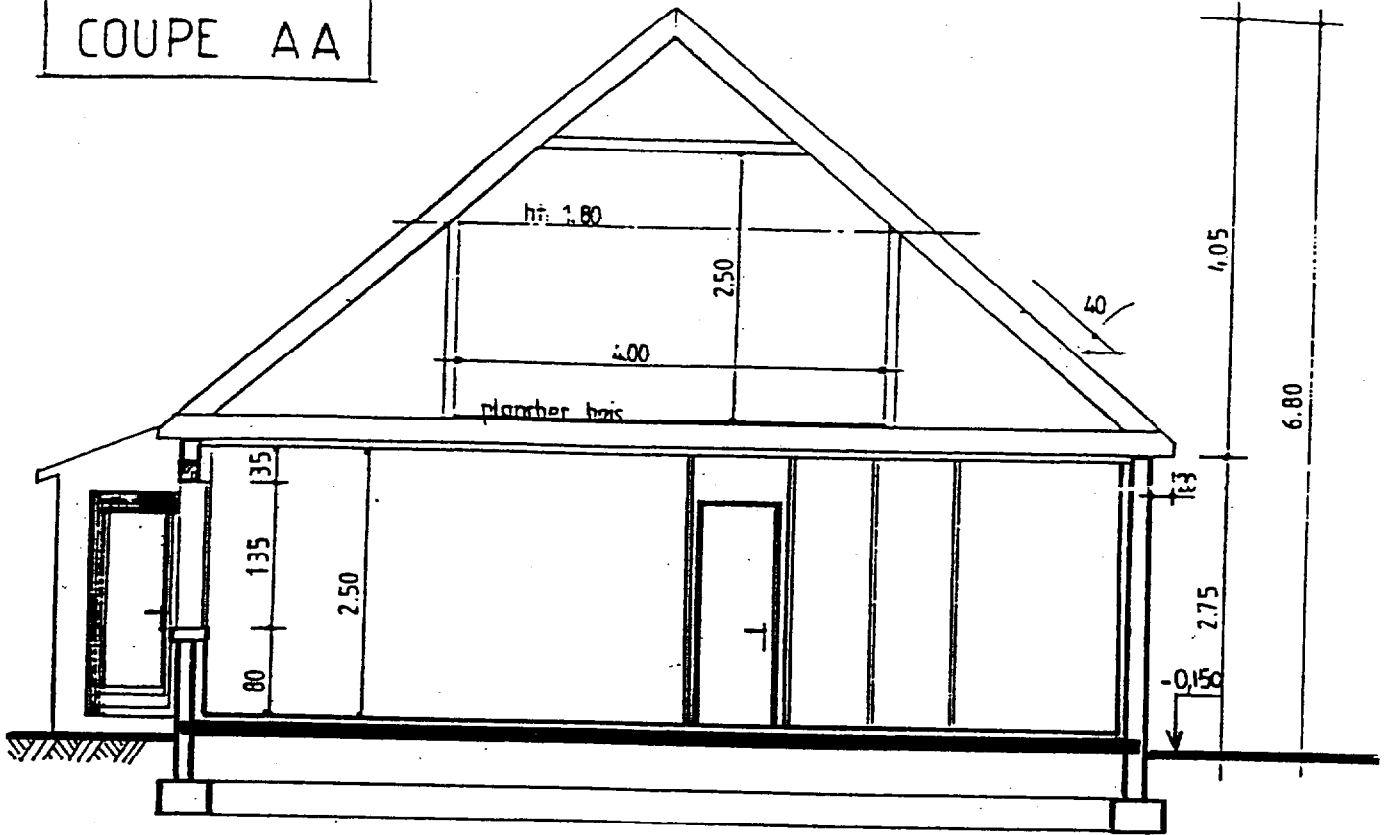
FACADE SUD OUEST



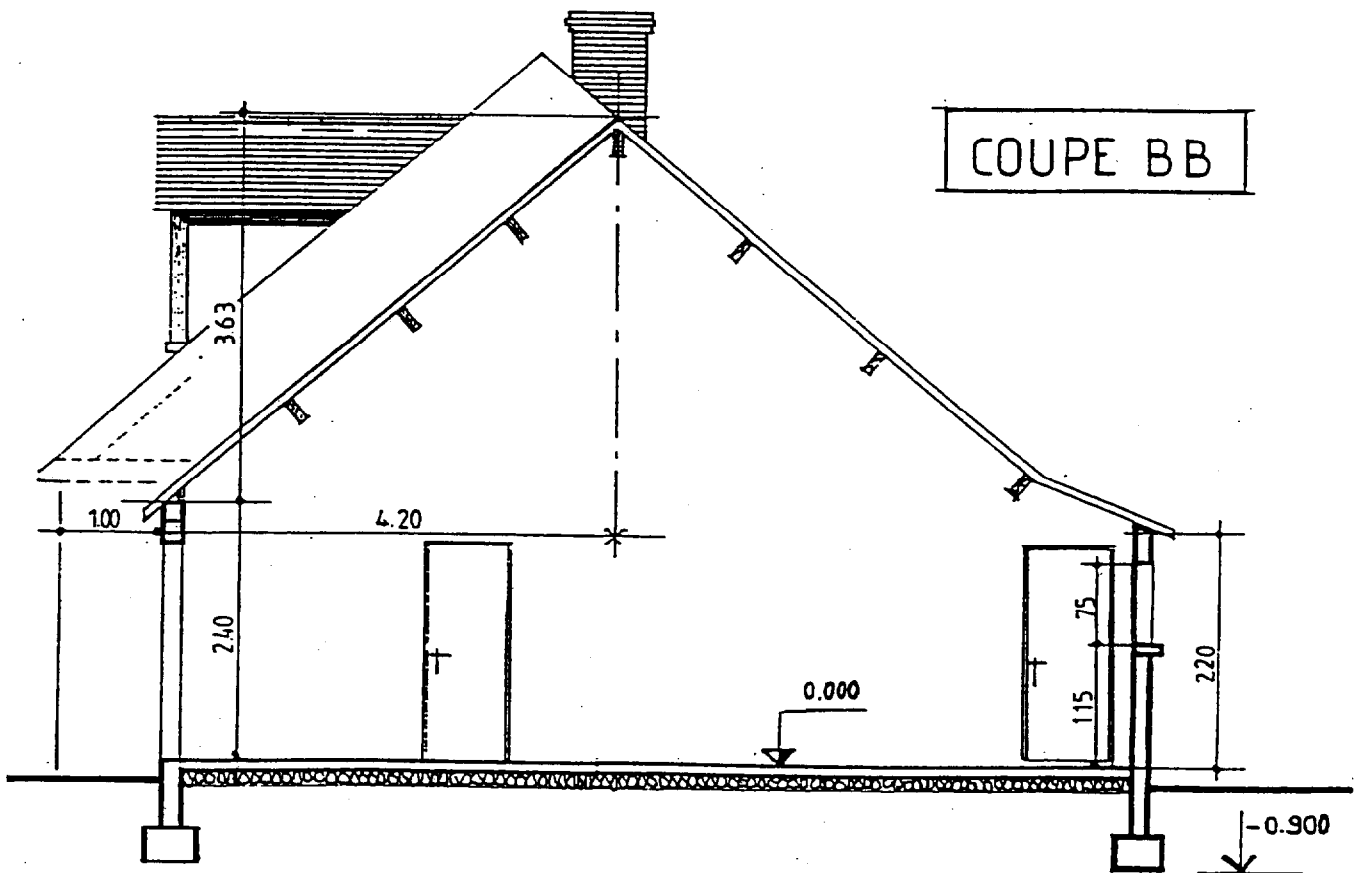
Feuille B/D

GROUPEMENT INTERCADMIQUE II	CAP Méders de la pierre	Sesston 2003	Code	Forme	Date
SECTEUR 8 - BATIMENT			EP 1	Exte	4 h

COUPE AA

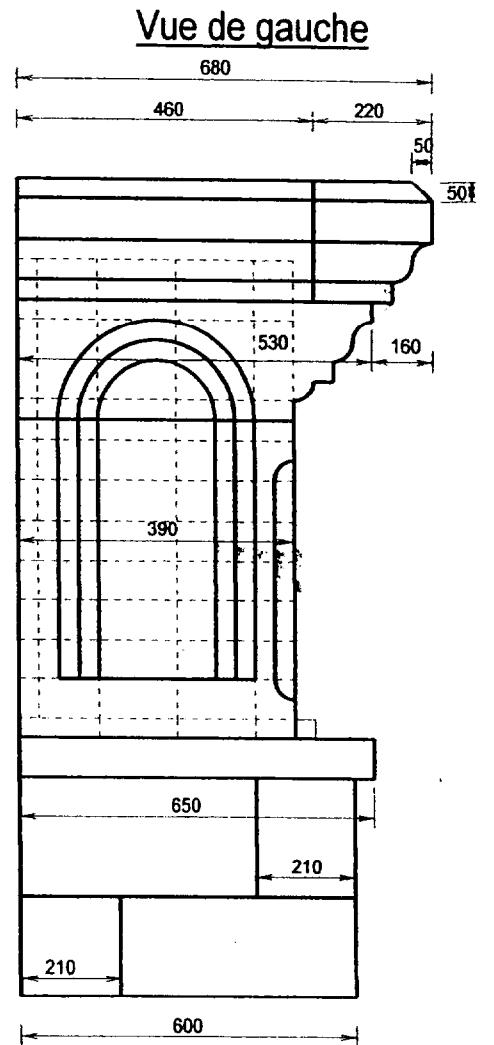
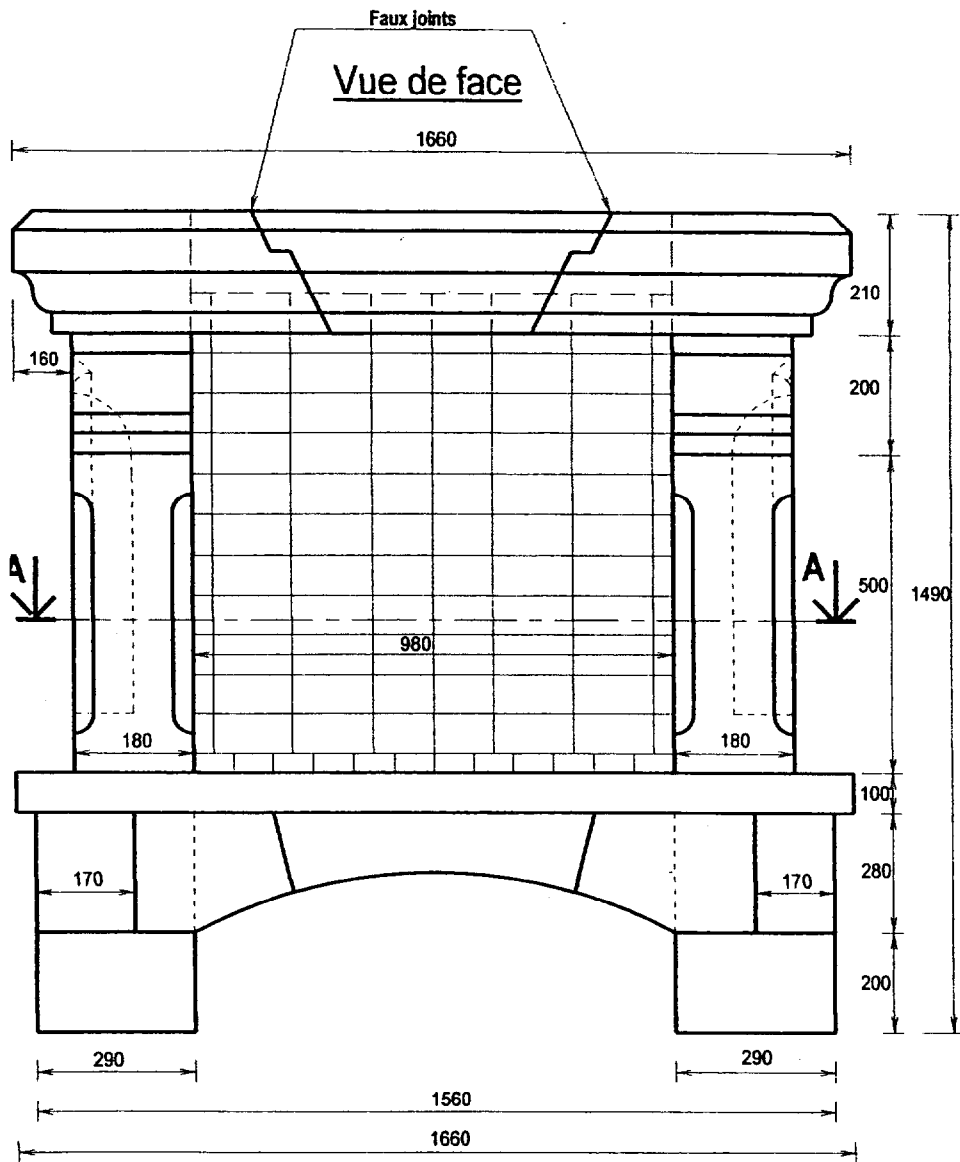


COUPE BB

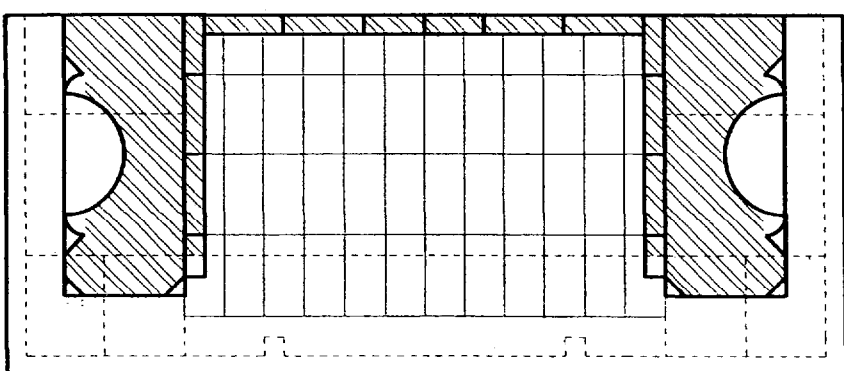


-Feuille C/D

# Cheminée en granit



Feuille D/D



A - A