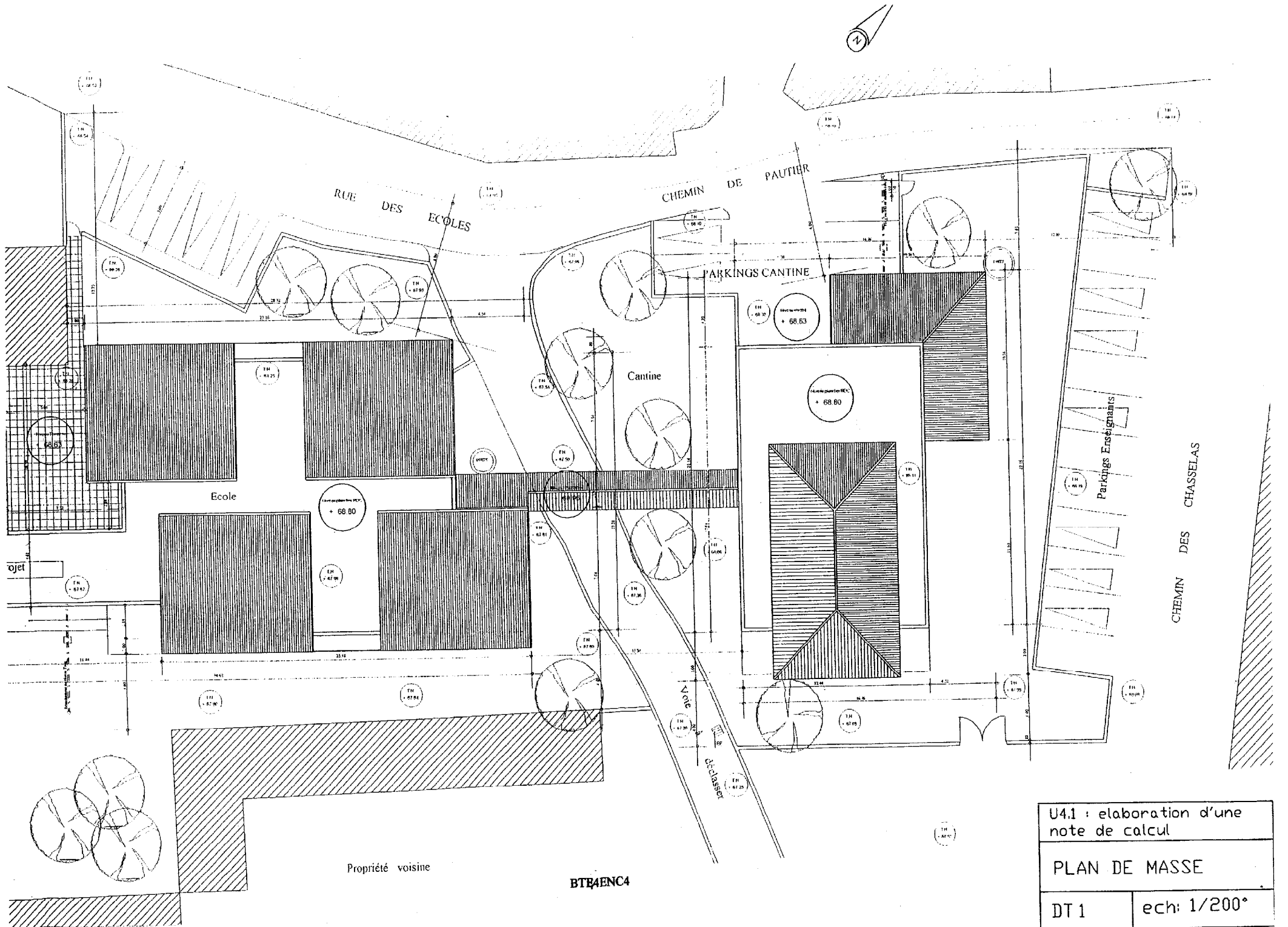


EPREUVE E4 : ETUDE DES CONSTRUCTIONS

Sous-Epreuve : U 41

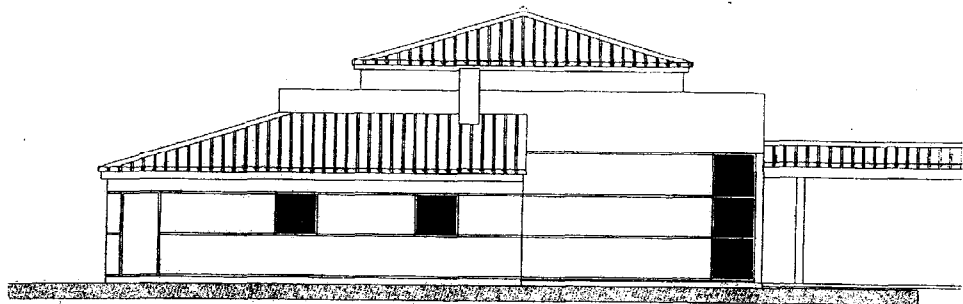
Elaboration d'une note de calcul de structures

**DOSSIER
TECHNIQUE**

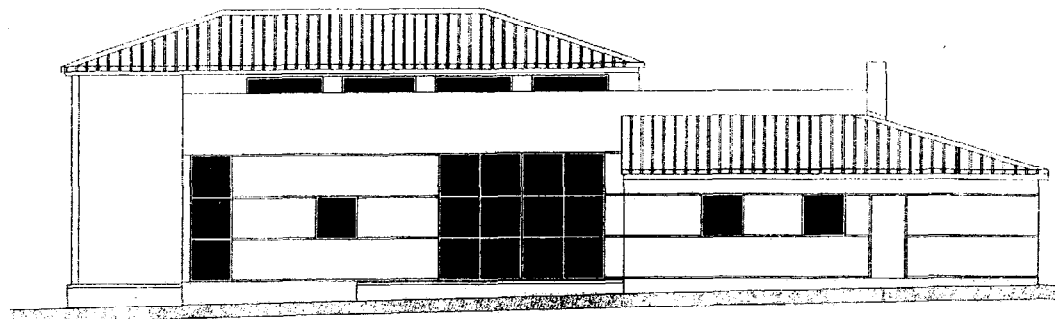


U4.1 : élaboration d'une note de calcul	
PLAN DE MASSE	
DT 1	ech: 1/200°

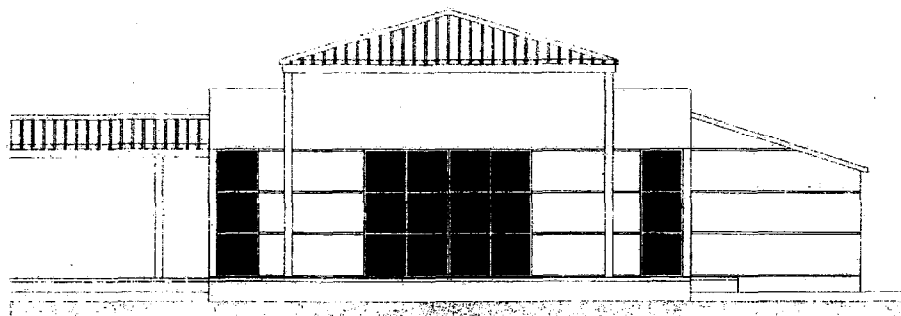
BTE4ENC4



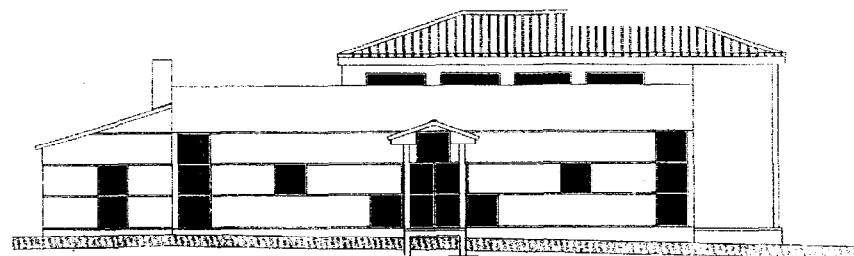
FACADE NORD



FACADE EST



FACADE SUD



FACADE OUEST

U4.1 : élaboration d'une
note de calcul

FACADES

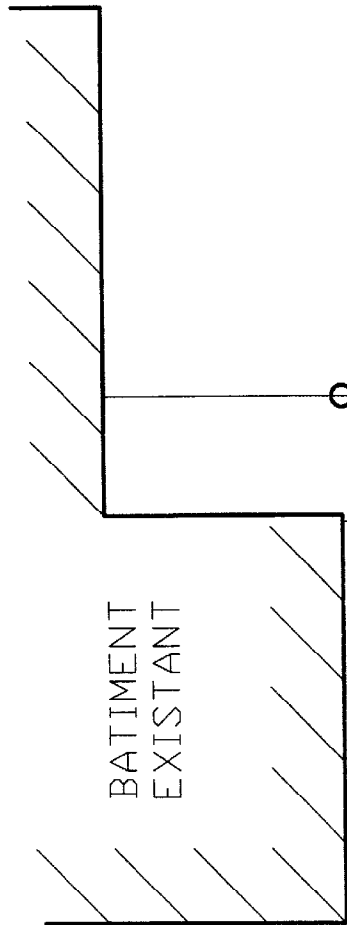
DT2

PR : Poutre en Retombée

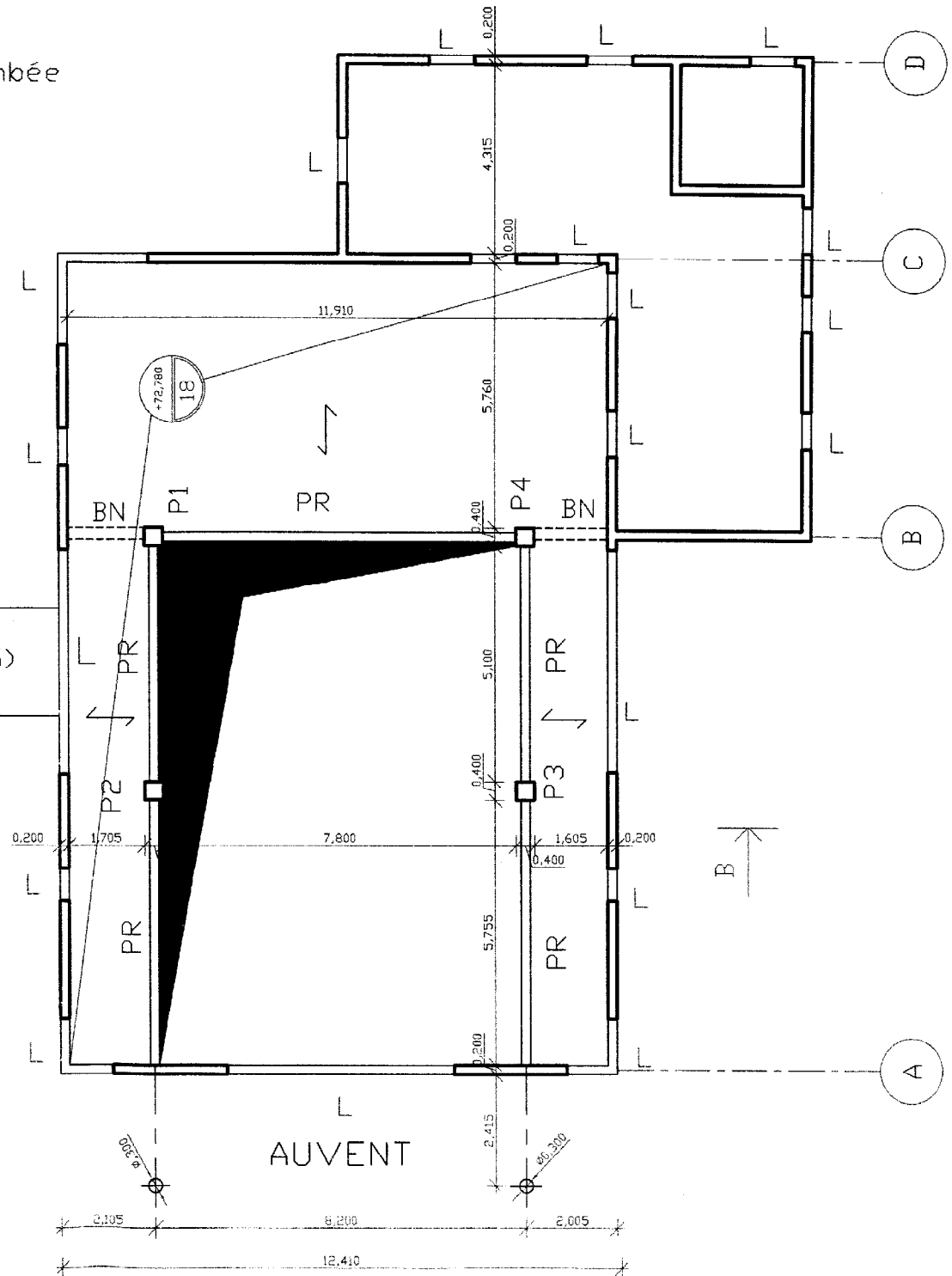
BN : Bande Noyée

L : linteau

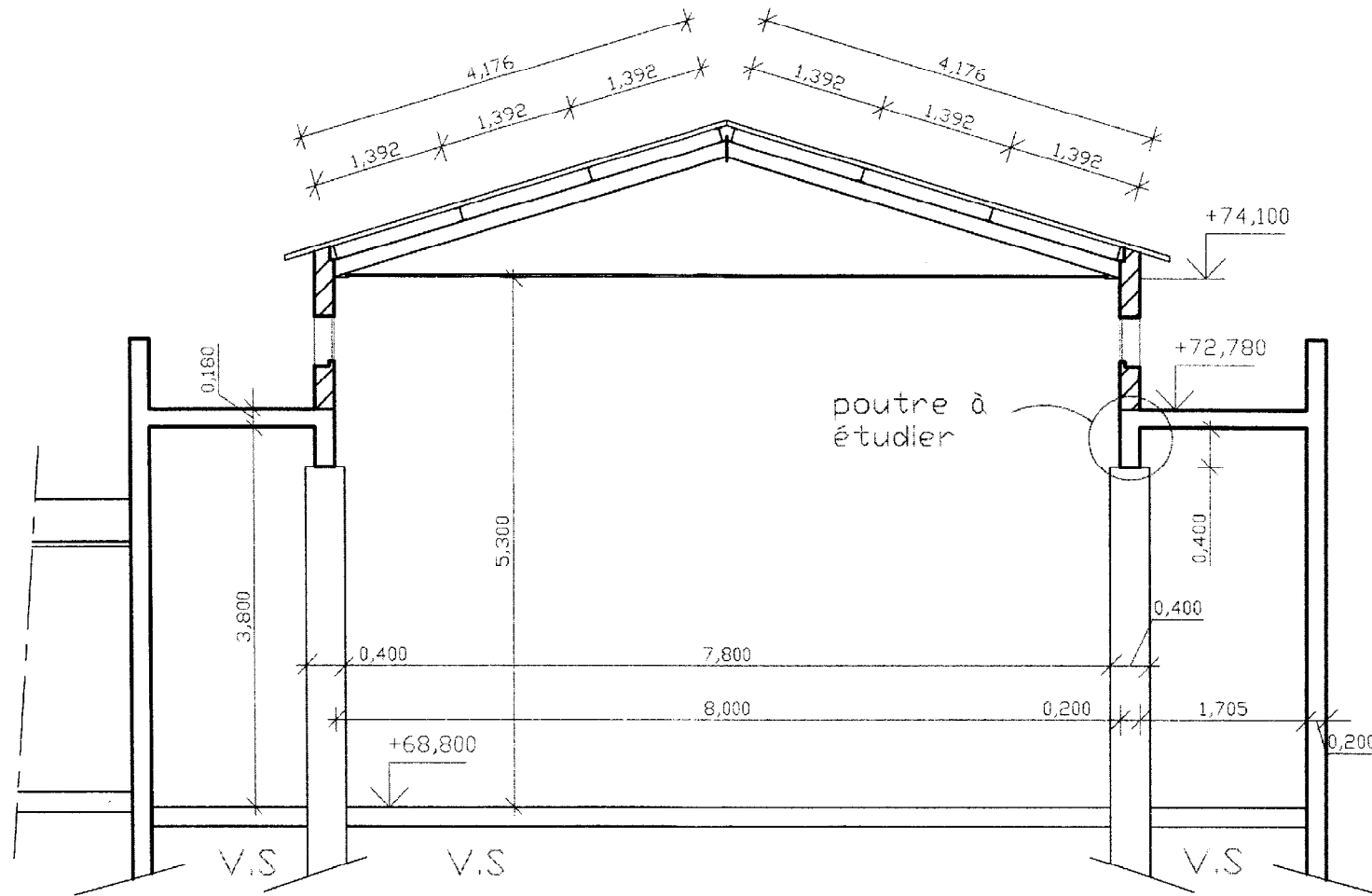
Pi : poteau i



ZONE PASSERELLE (voir DT 5)



U4.1 : elaboration d'une note de calcul	
PLANCHER HAUT RDC CANTINE	
DT3	ech: 1/100°

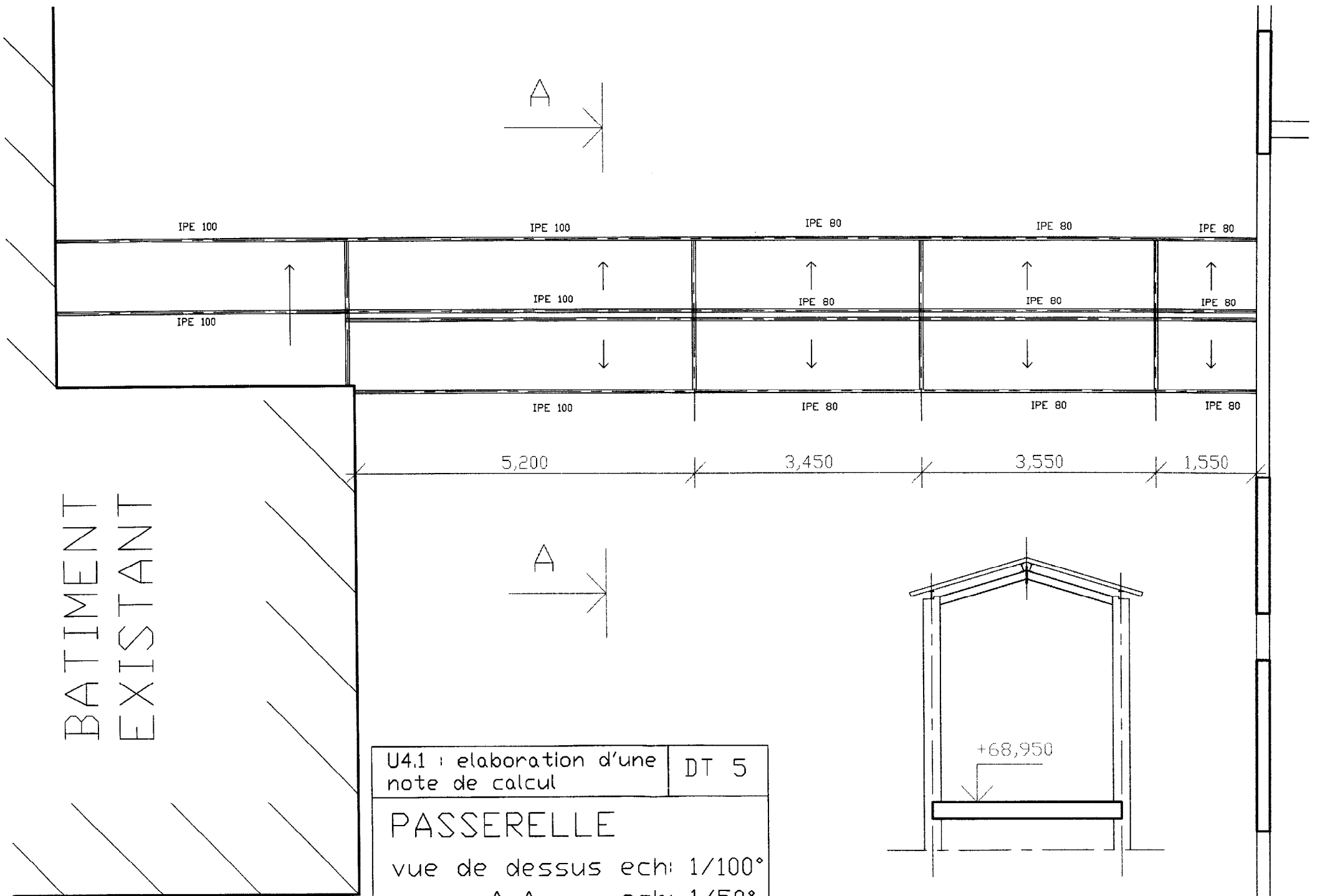


U4.1 : élaboration d'une
note de calcul

COUPE B-B

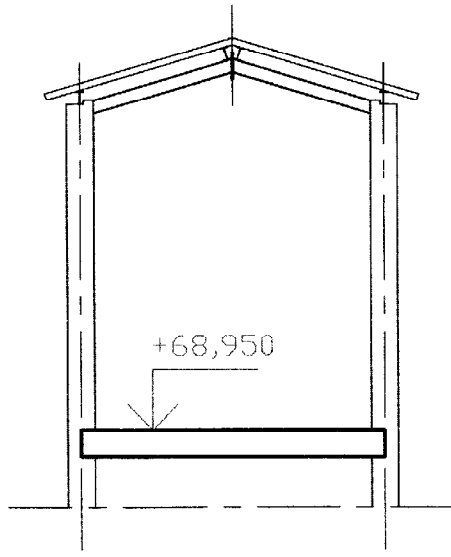
DT 4

ech: 1/50°

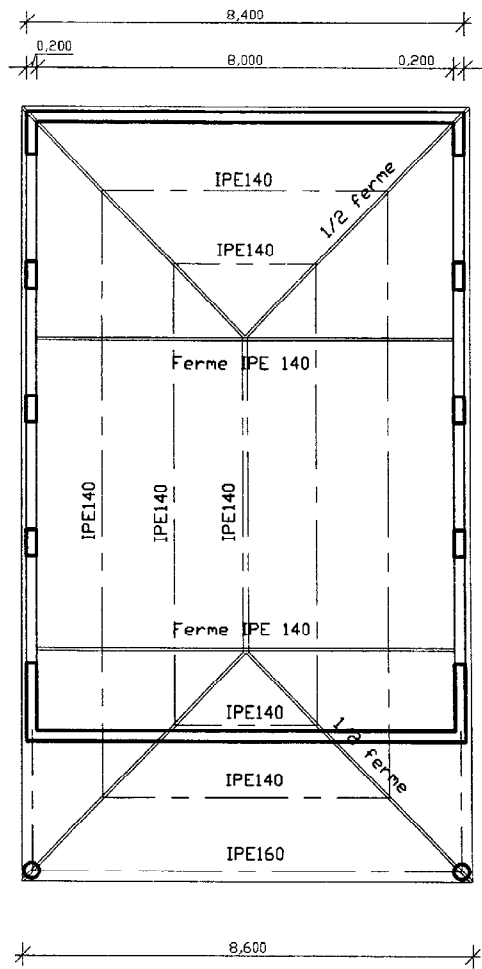


BATIMENT
EXISTANT

U4.1 : elaboration d'une note de calcul	DT 5
PASSERELLE	
vue de dessus ech: 1/100°	
coupe A-A ech: 1/50°	



COUPE A-A



U4.1 : elaboration d'une note de calcul	
CHARPENTE-COUVERTURE	
DT 6	ech: 1/100°