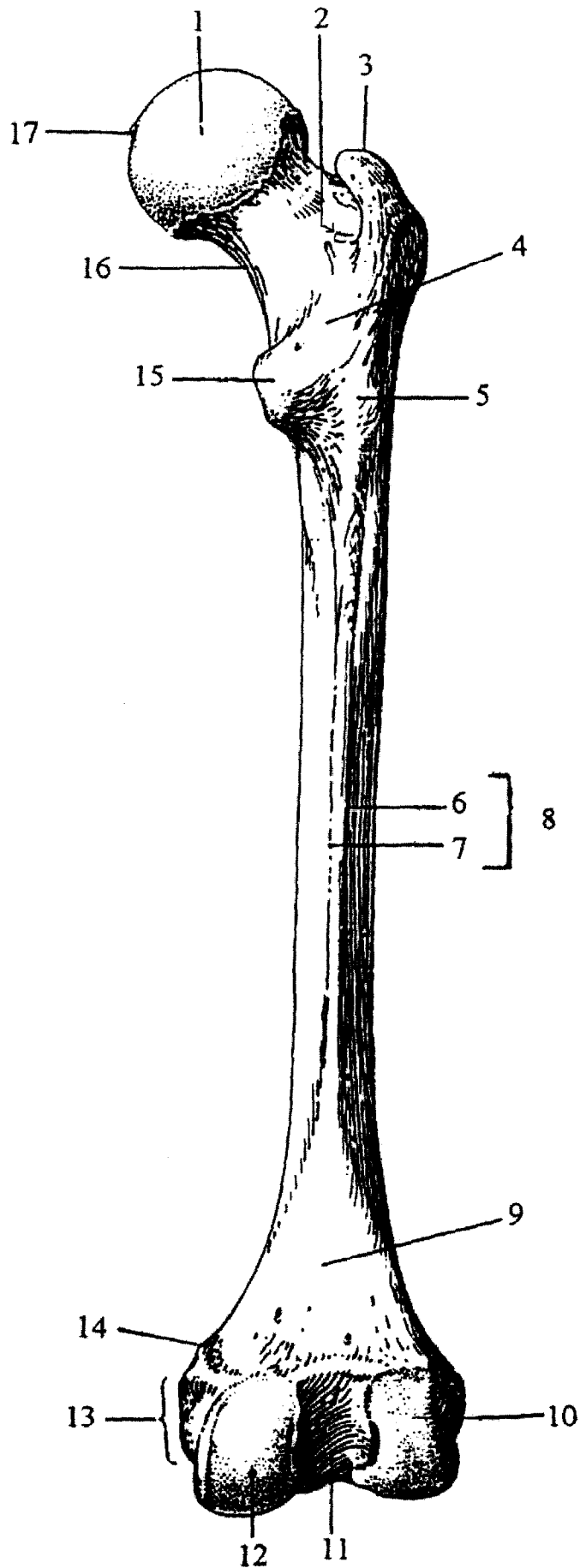
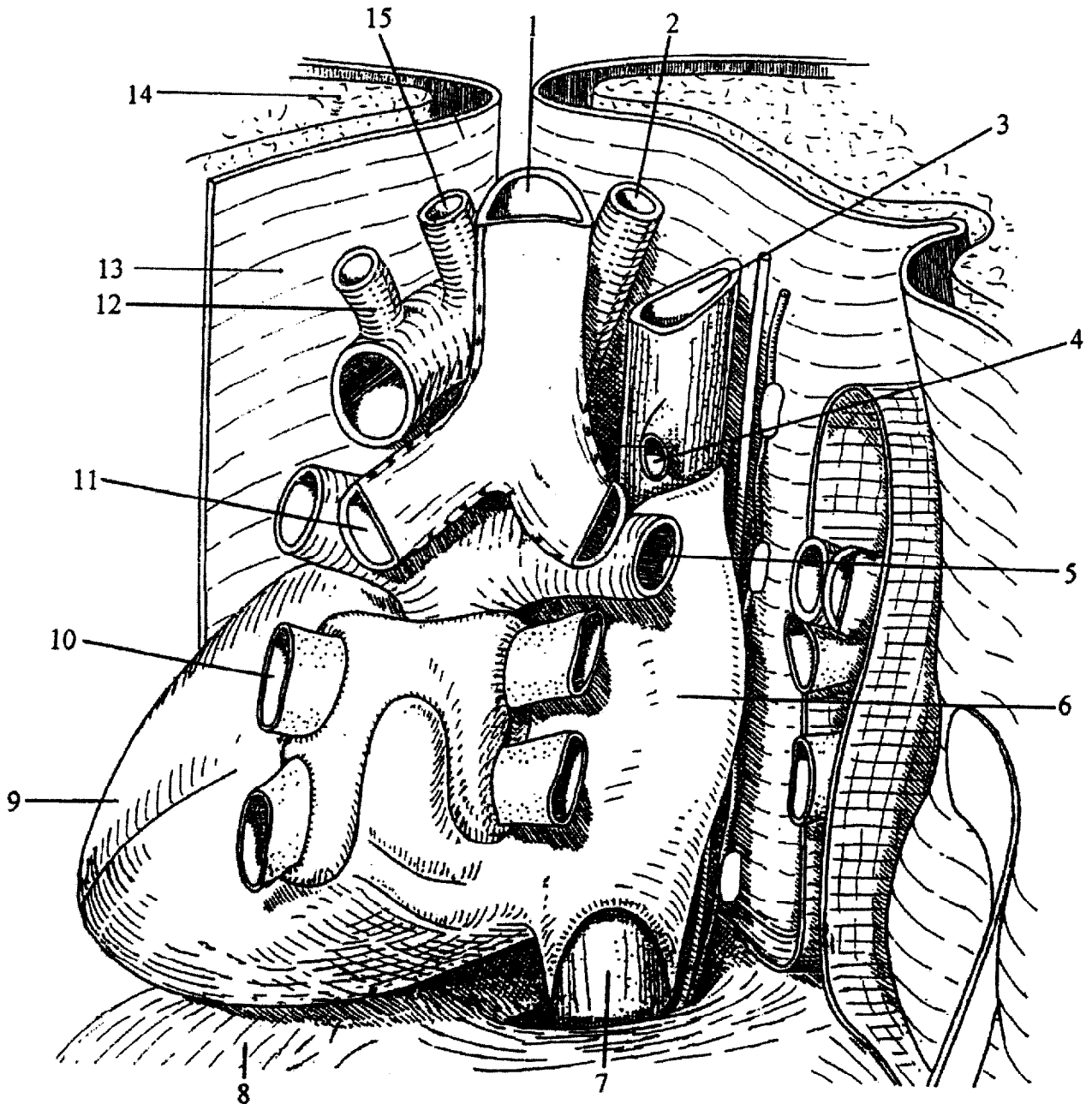


DOCUMENT I

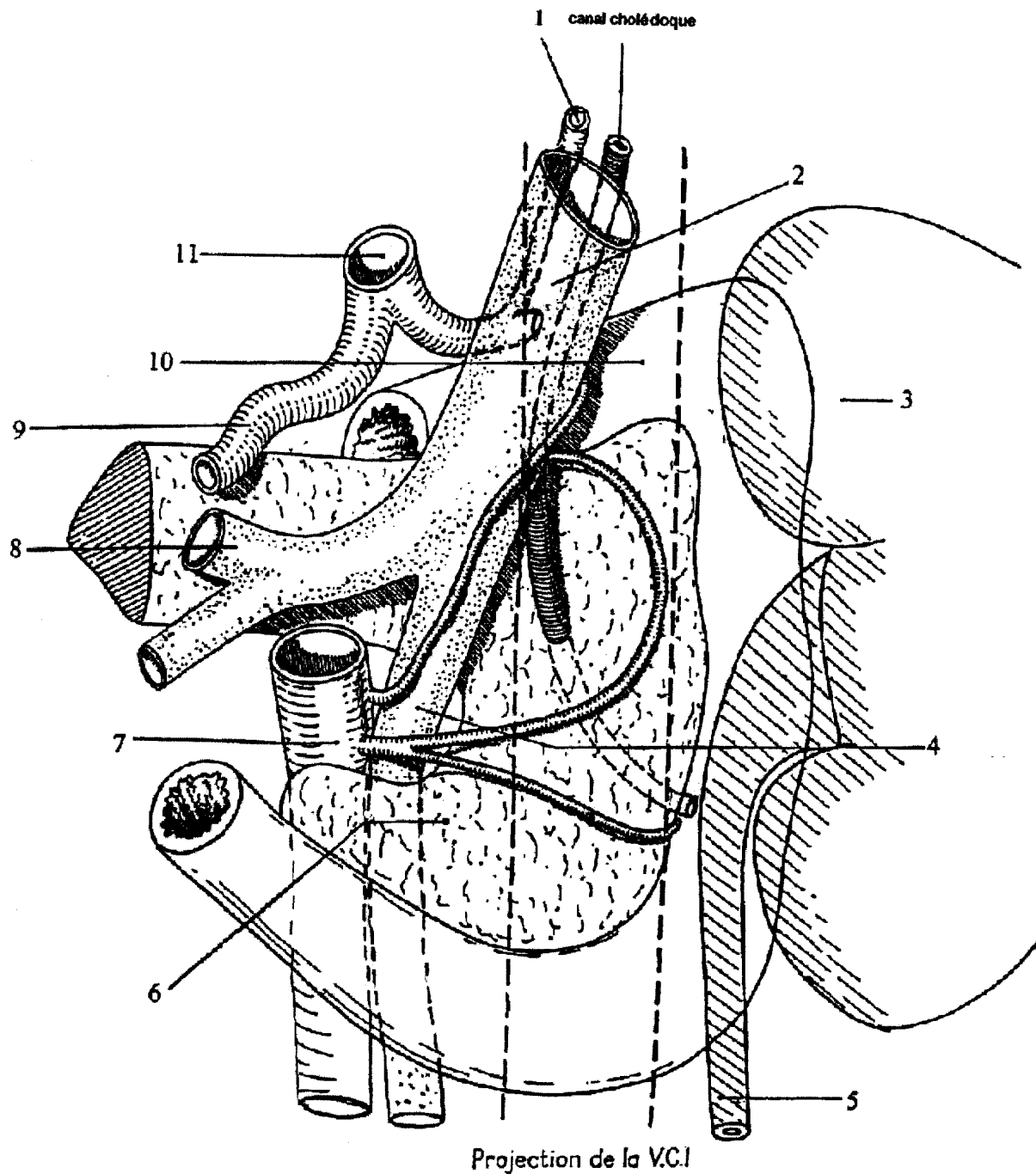


DOCUMENT II

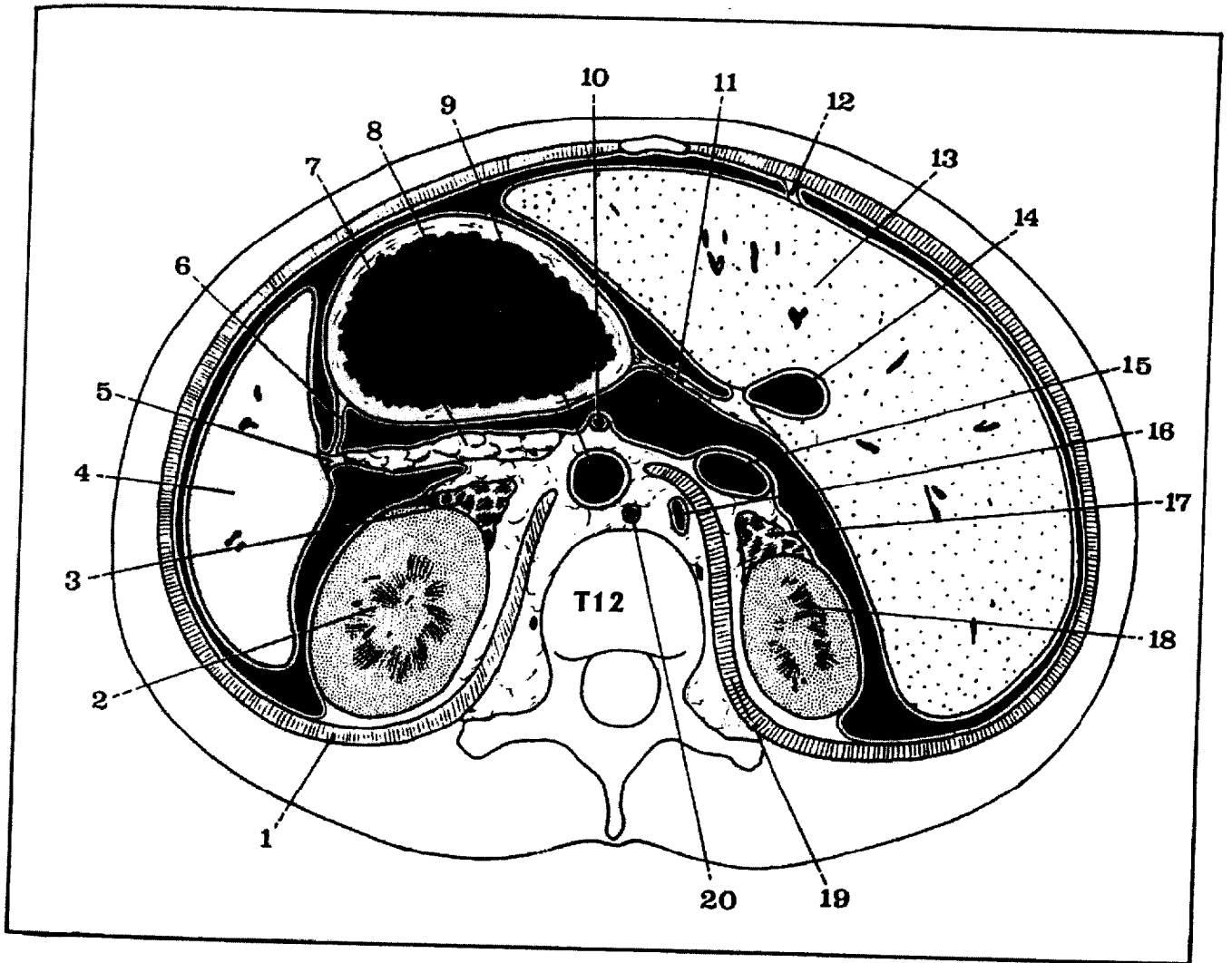
A rendre avec la copie



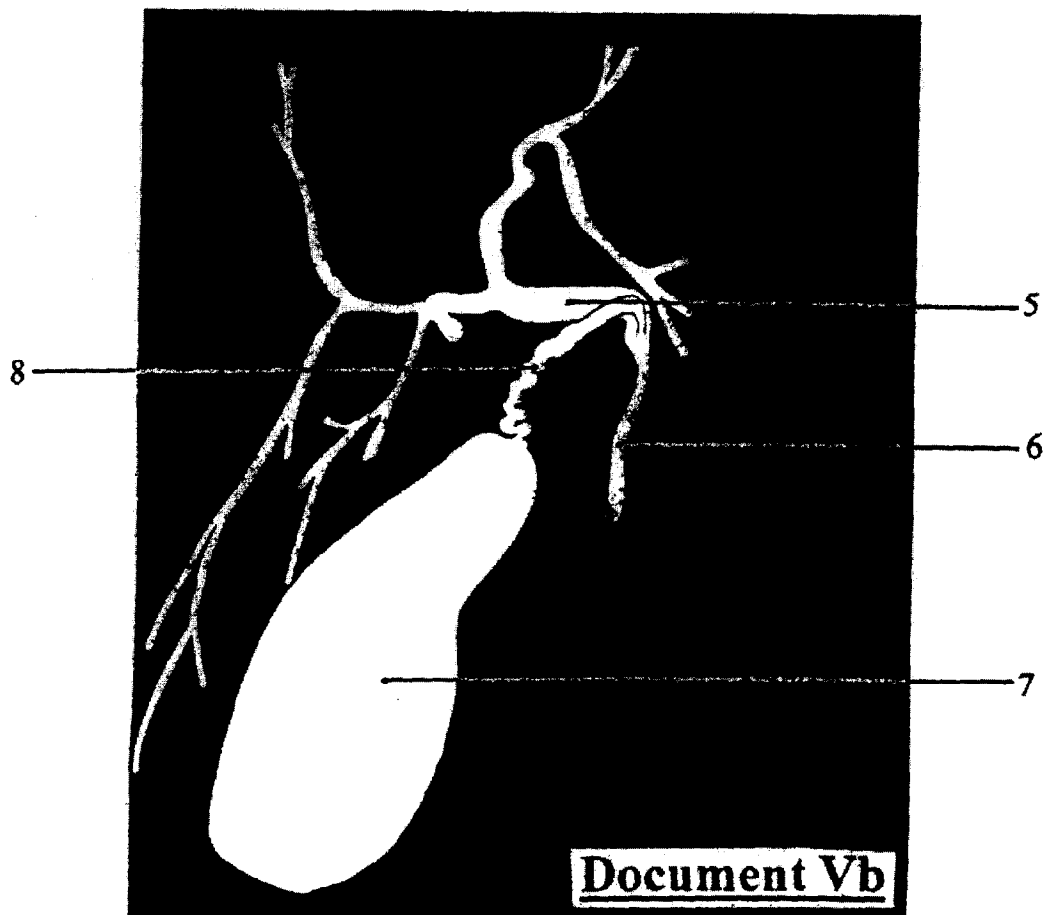
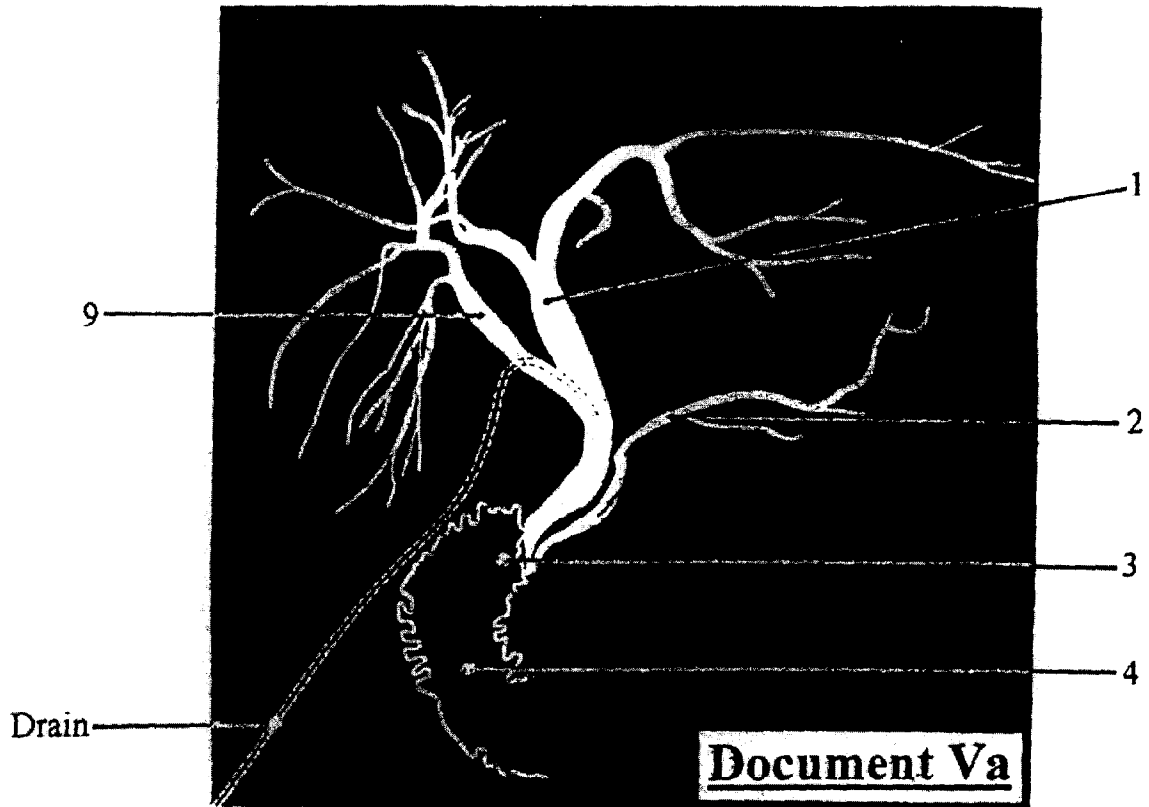
DOCUMENT III



DOCUMENT IV

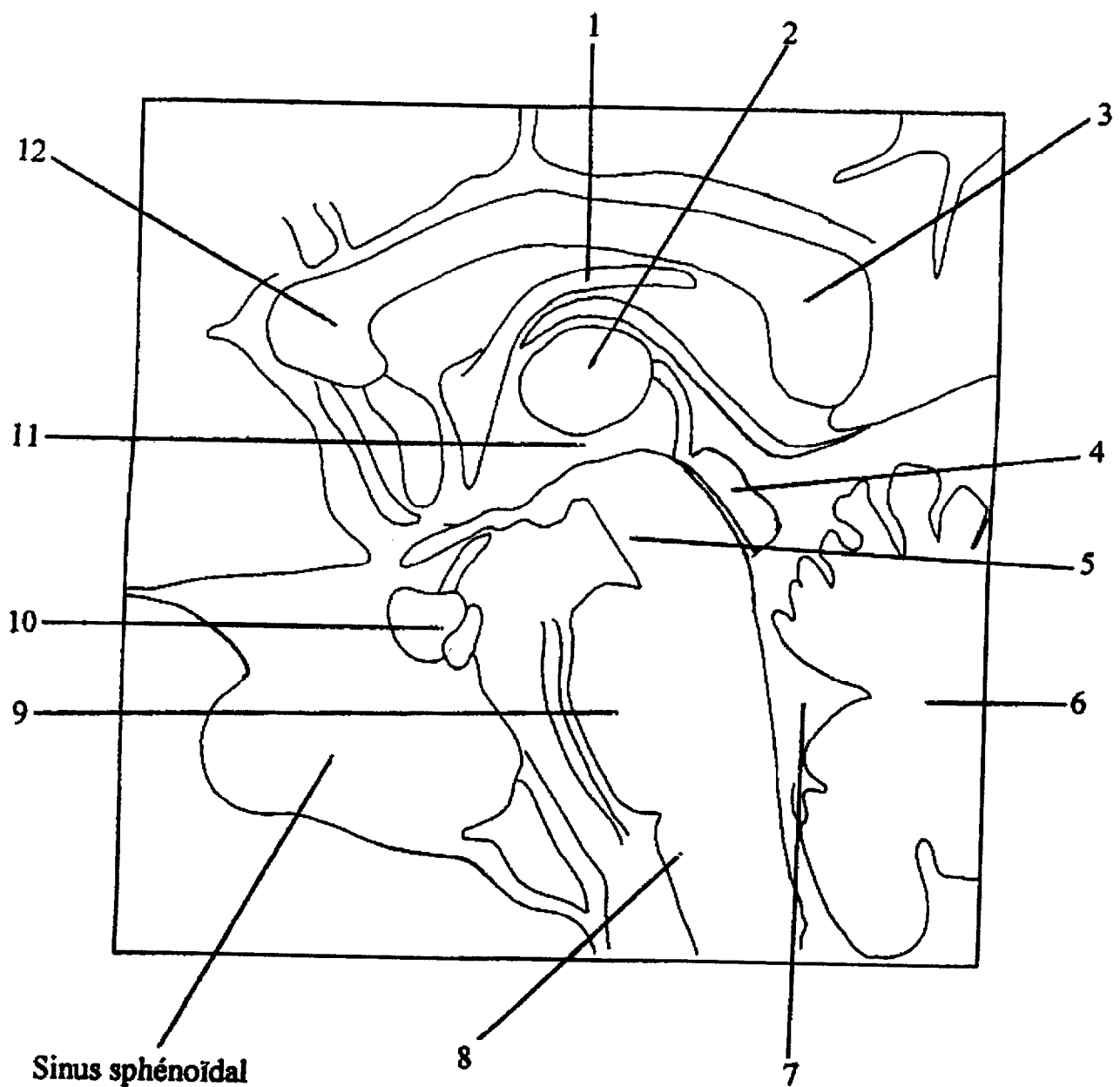


DOCUMENT V

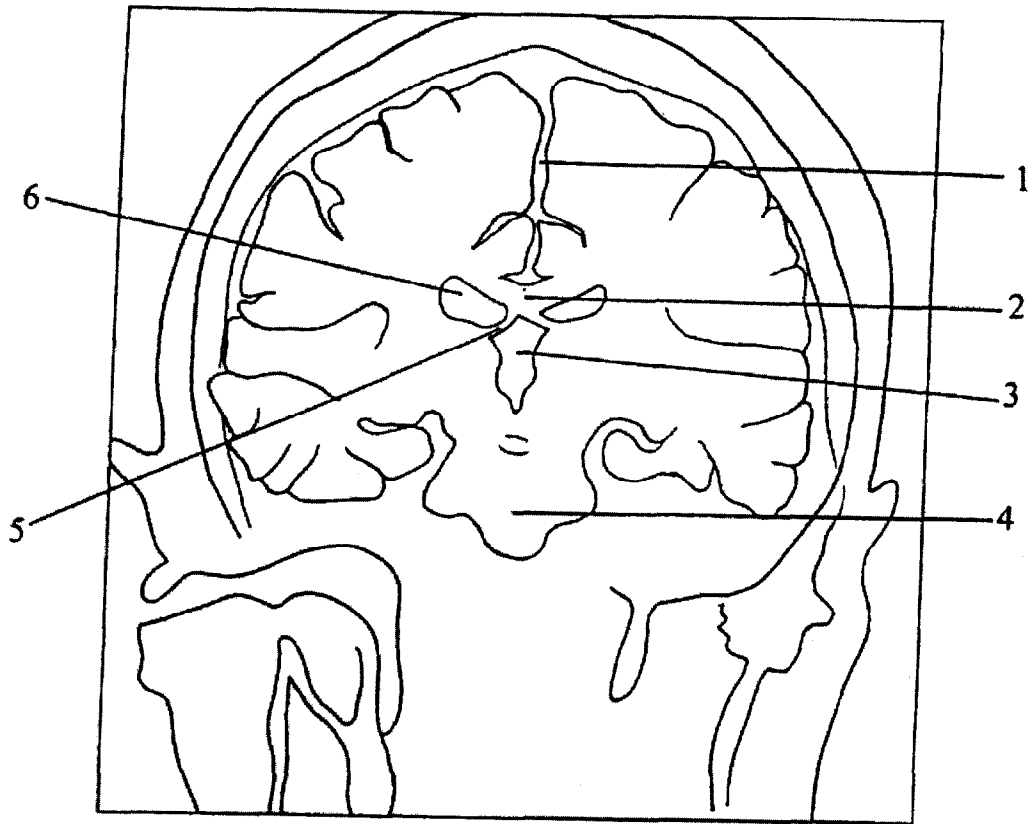


DOCUMENT VI

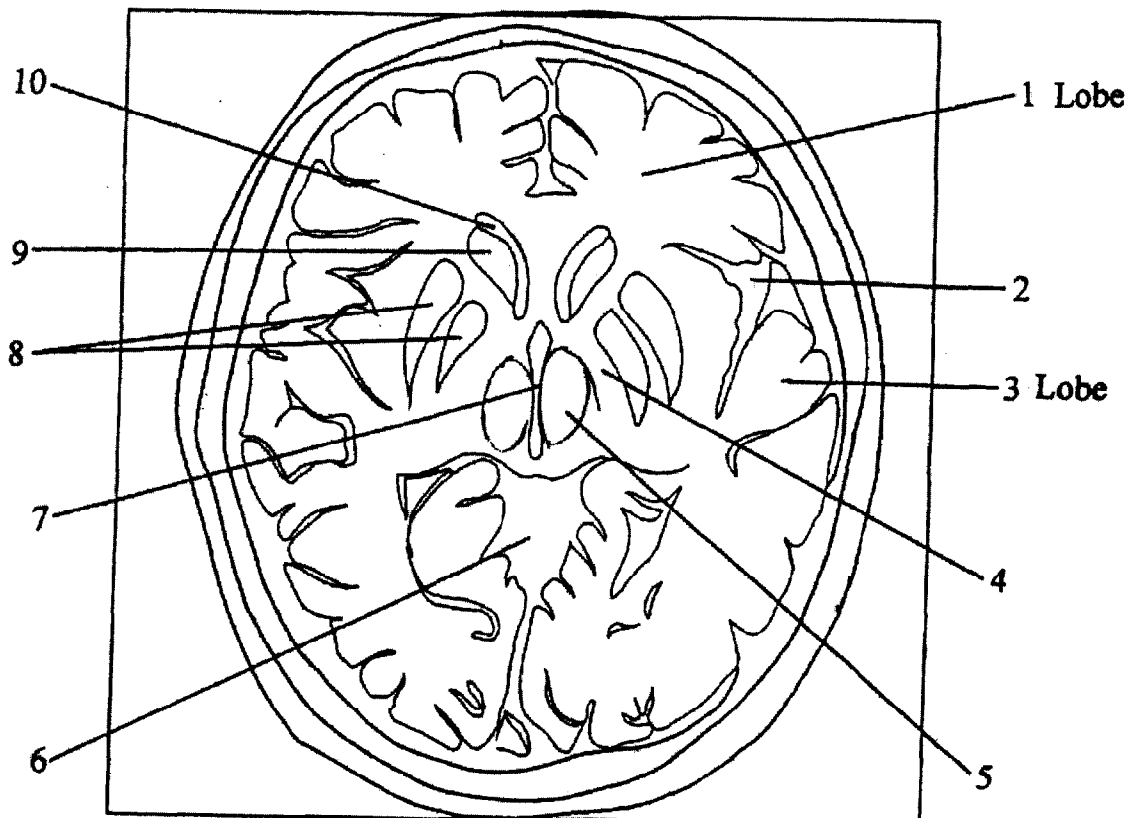
A rendre avec la copie



DOCUMENT VII

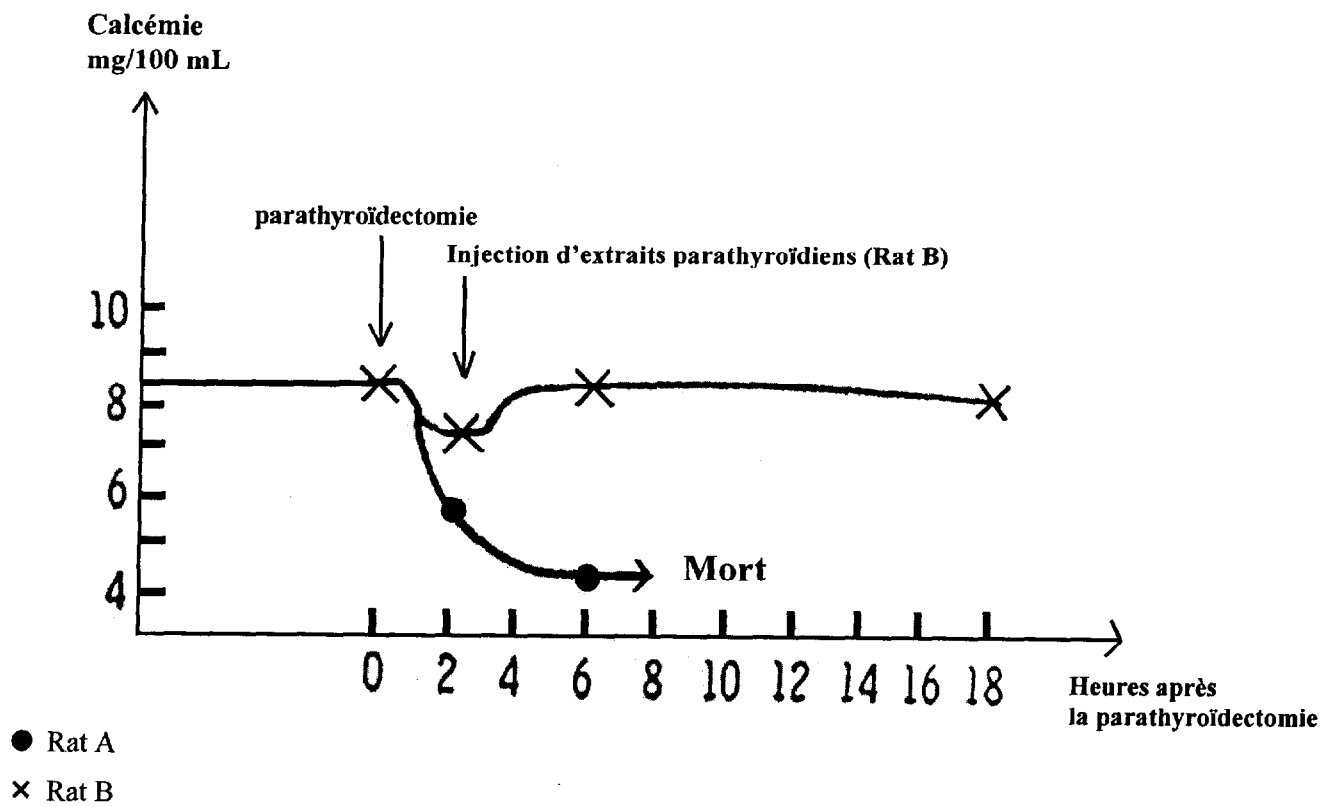


DOCUMENT VIII



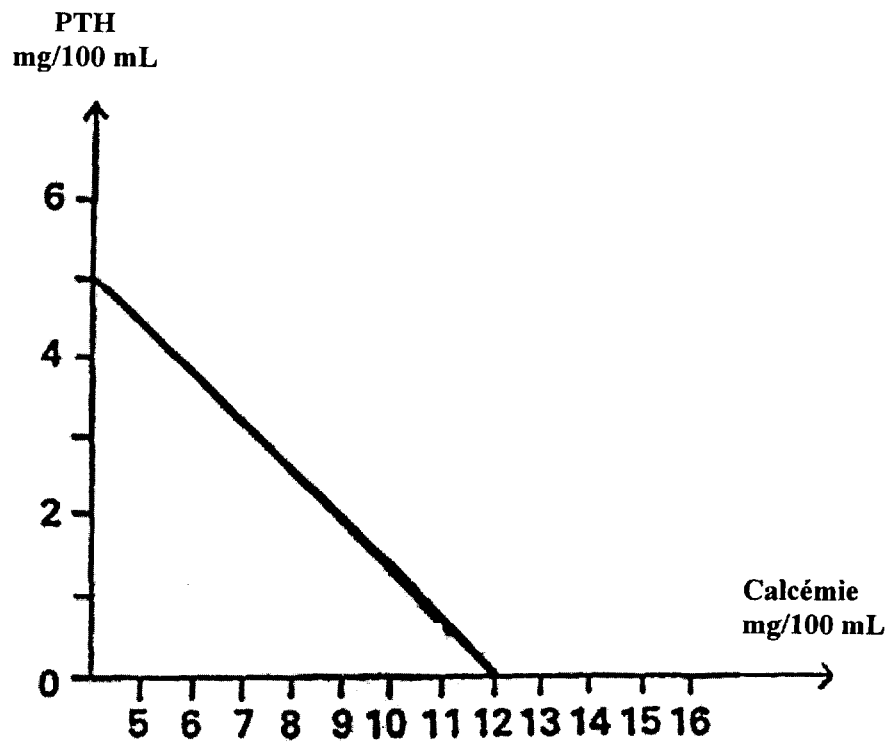
DOCUMENT A

Évolution de la calcémie chez le rat



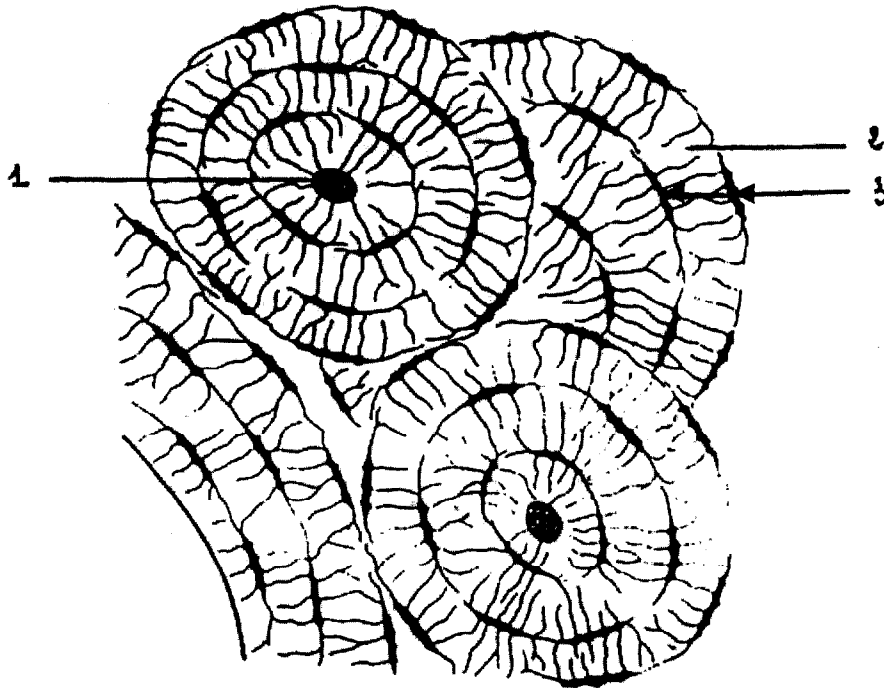
DOCUMENT B

Évolution de la concentration de PTH en fonction de la calcémie chez le rat

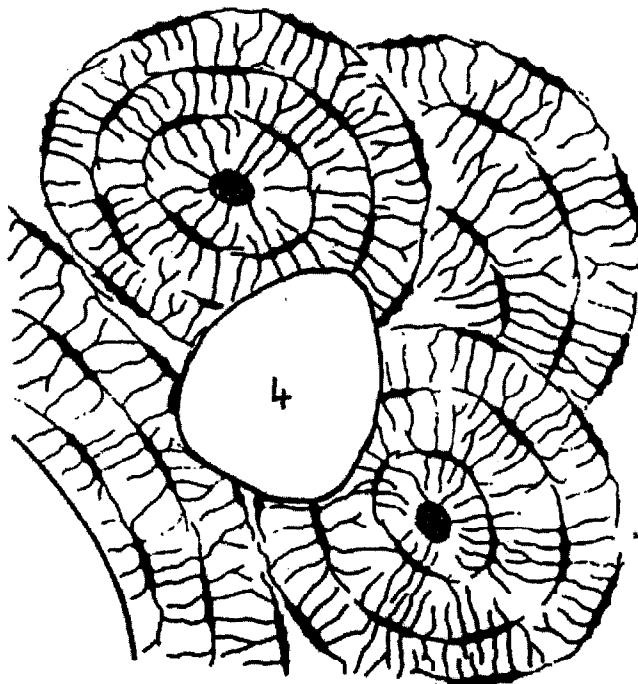


DOCUMENT C

Tissu osseux – Microscope optique x 400

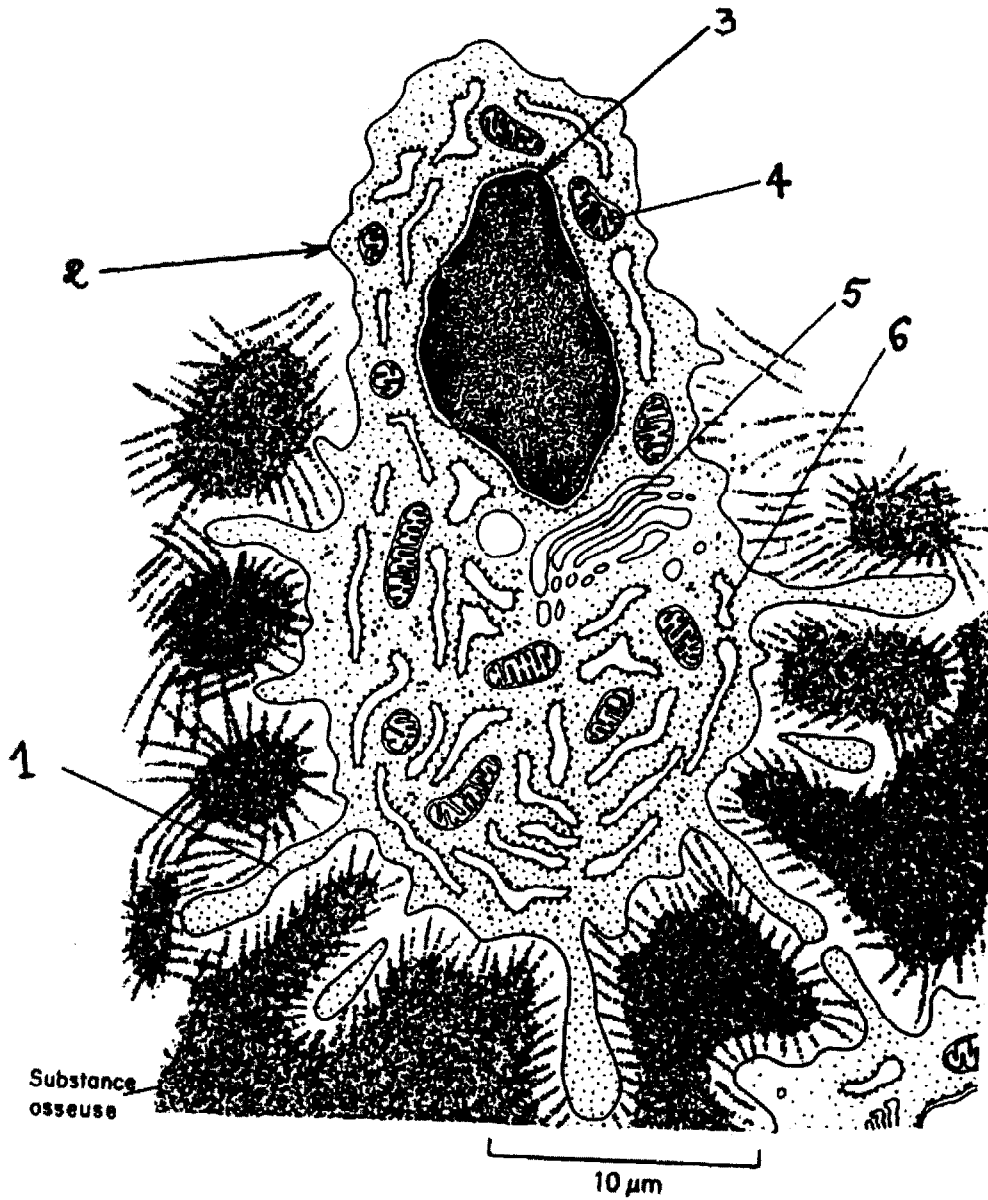


Quelques jours plus tard en présence de fragments de parathyroïdes

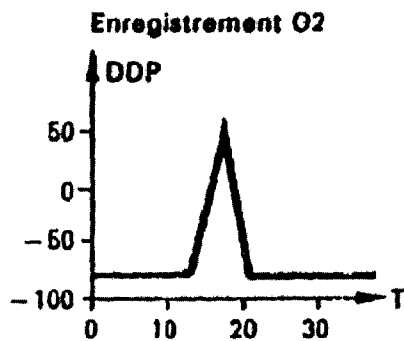
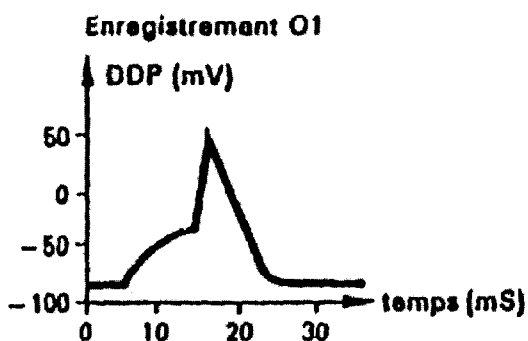
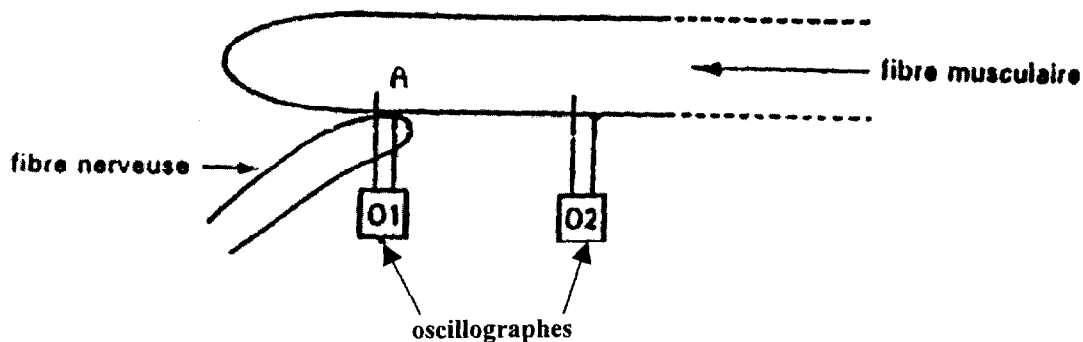


DOCUMENT D

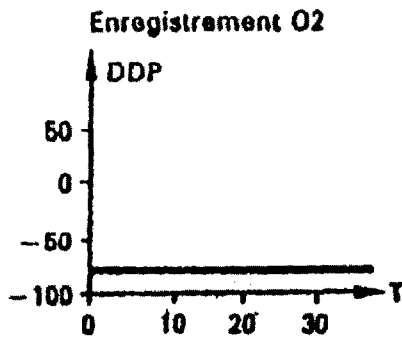
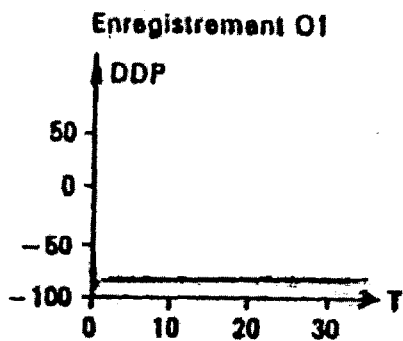
Electronographie



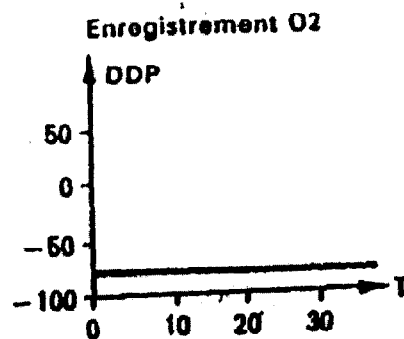
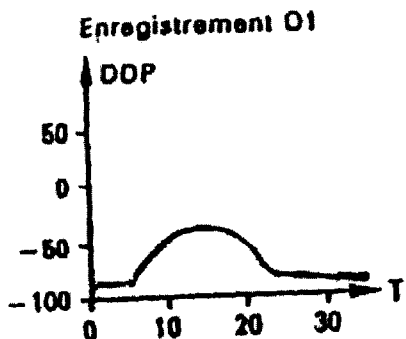
DOCUMENT E



Enregistrements Ea

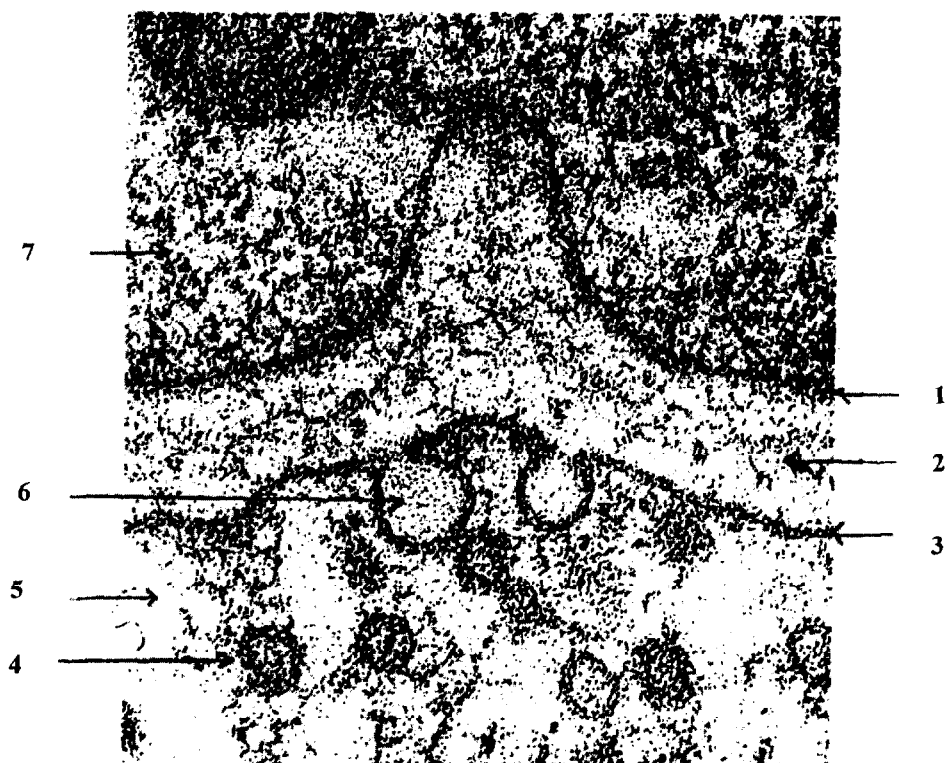


Enregistrements Eb



DOCUMENT F x 200 000

Microscopie électronique à transmission



DOCUMENT G

Tubes	1	2	3	4
NaCl à 9 gL ⁻¹	+	+	+	+
Anticorps lapin Anti-GRM	-	+	+	-
Complément de cobaye	-	-	+	+
Globules rouges de mouton	+	+	+	+
Résultats	Sédimentation des GRM intacts	Sédimentation des GRM agglutinés	Hémolyse	Sédimentation des GRM intacts

+ présence
- absence

DOCUMENT H

Tubes	5	6	7	8	9
NaCl à 9 gL ⁻¹	+	-	+	+	+
Eau distillée	-	+	-	-	-
Anticorps lapin Anti-GRM	+	+	-	+	+
Anticorps lapin Anti-SAB	-	-	+	-	-
Complément de cobaye	+	+	+	-	+
Complément chauffé préalablement 30 min. à 56°C	-	-	-	+	-
Globules rouges de mouton	+	+	+	+	-

+ présence
- absence

SAB : sérum albumine bovine