

DOSSIER REPONSES

Question 1 : Interprétation de documents Pages 20/26

Question 2 : Choix matière Pages 20/26 et 21/26

Question 3 : Affinement, modifications Page 21/26

Question 4 : Conception produit Pages 22/26 format A3

Question 5 : Etude de moulage Pages 23/26, 24/26 format A3, 25/26 format A3

Question 6 : Etude graphique de mise en forme de produit Page 26/26 format A3

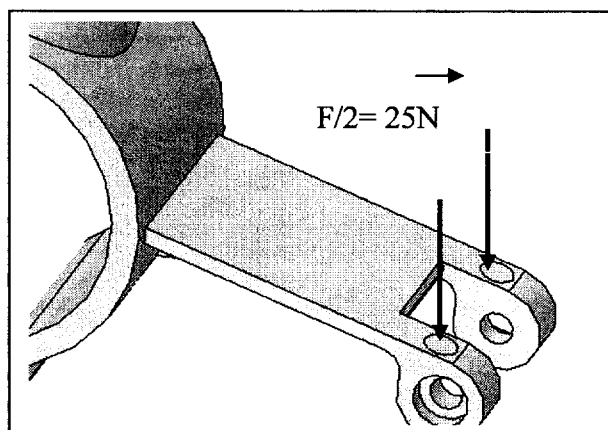
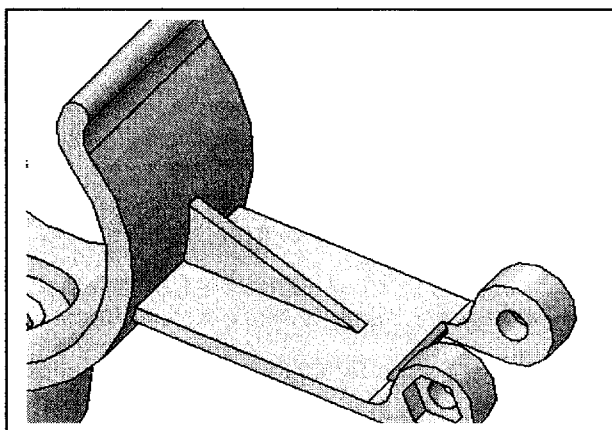
Q25 Choix de matière

Rappel des critères de choix :

Choix de la (ou des) matière(s) :

Questions 3 : Affinement, modifications.

Q31 Identification des zones

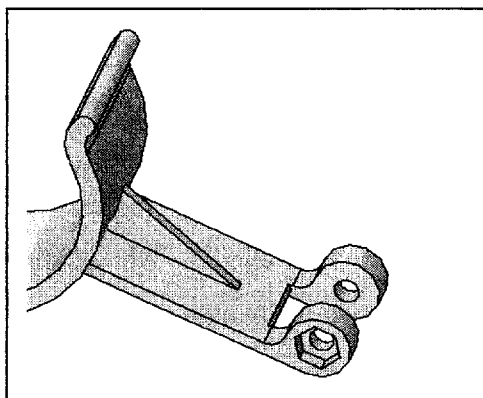


Blank space for identifying stress zones.

Q32 Interprétation des résultats de la simulation, conclusion :

Blank space for simulation interpretation and conclusion.

Q33 Modification de formes

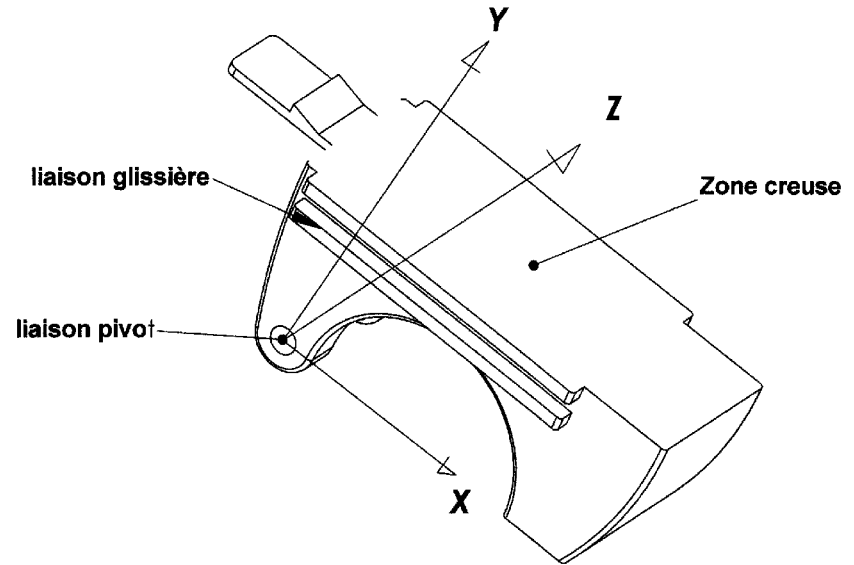
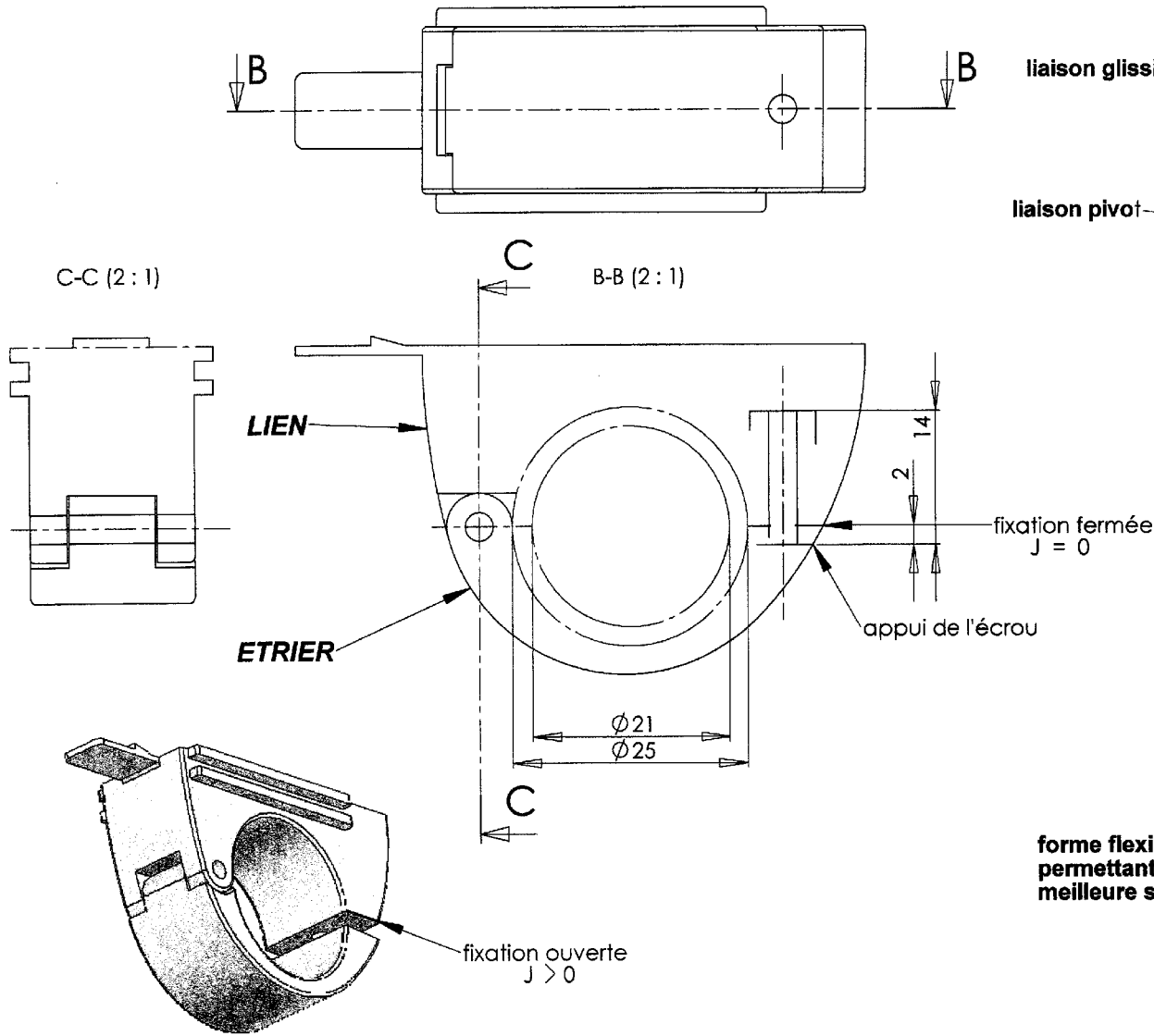


Formes modifiées

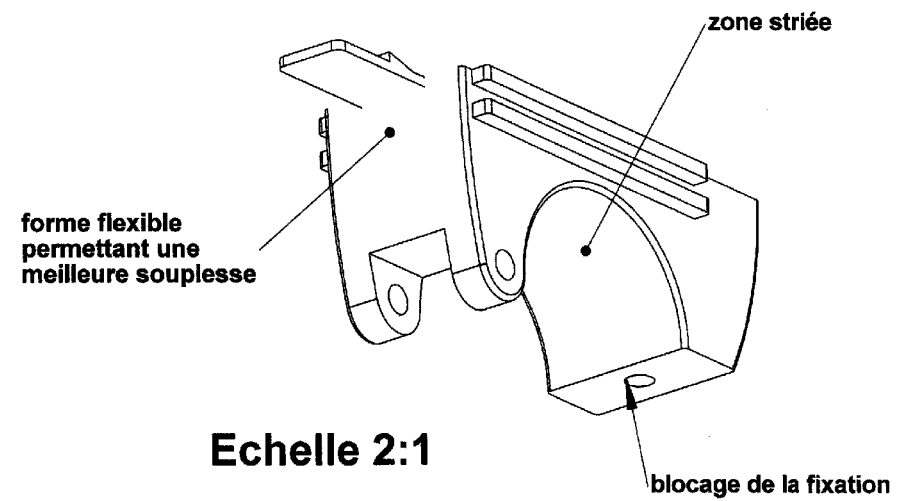
Blank space for drawing modified forms.

PARTIE 2: Conception Produit

Q4 : Conception de la nouvelle Fixation



Directions de démoulage	X	Y	Z
Direction principale			
Direction auxiliaire			
Nombre d'éléments mobiles			

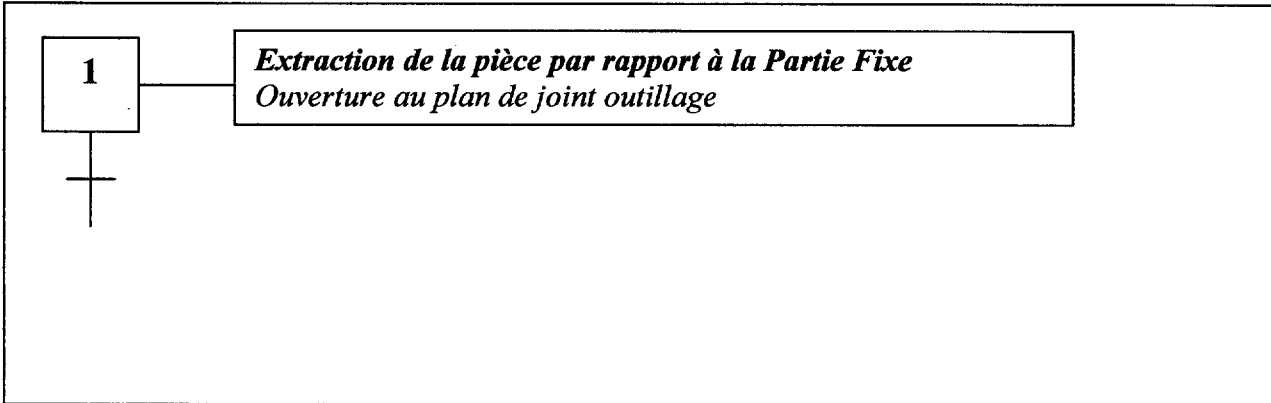


Echelle 2:1

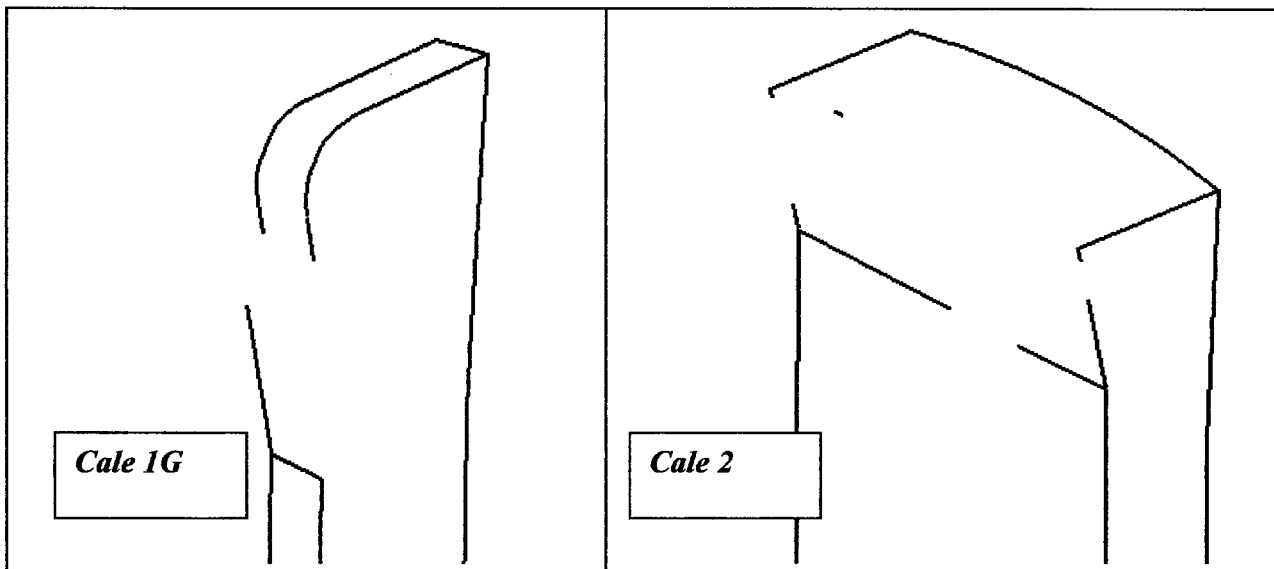
PARTIE 3 : Analyse du Corps de Lampe

Questions 5 : Etude de moulage

Q51 Graphe de fonctionnement :



Q52 Perspectives des cales montantes:



Q53 Sur DR6, mesure des valeurs des contre dépouilles Cd1 et Cd2 :

Cd1 = _____ Cd2 = _____

Q54 Déplacement de la Batterie:

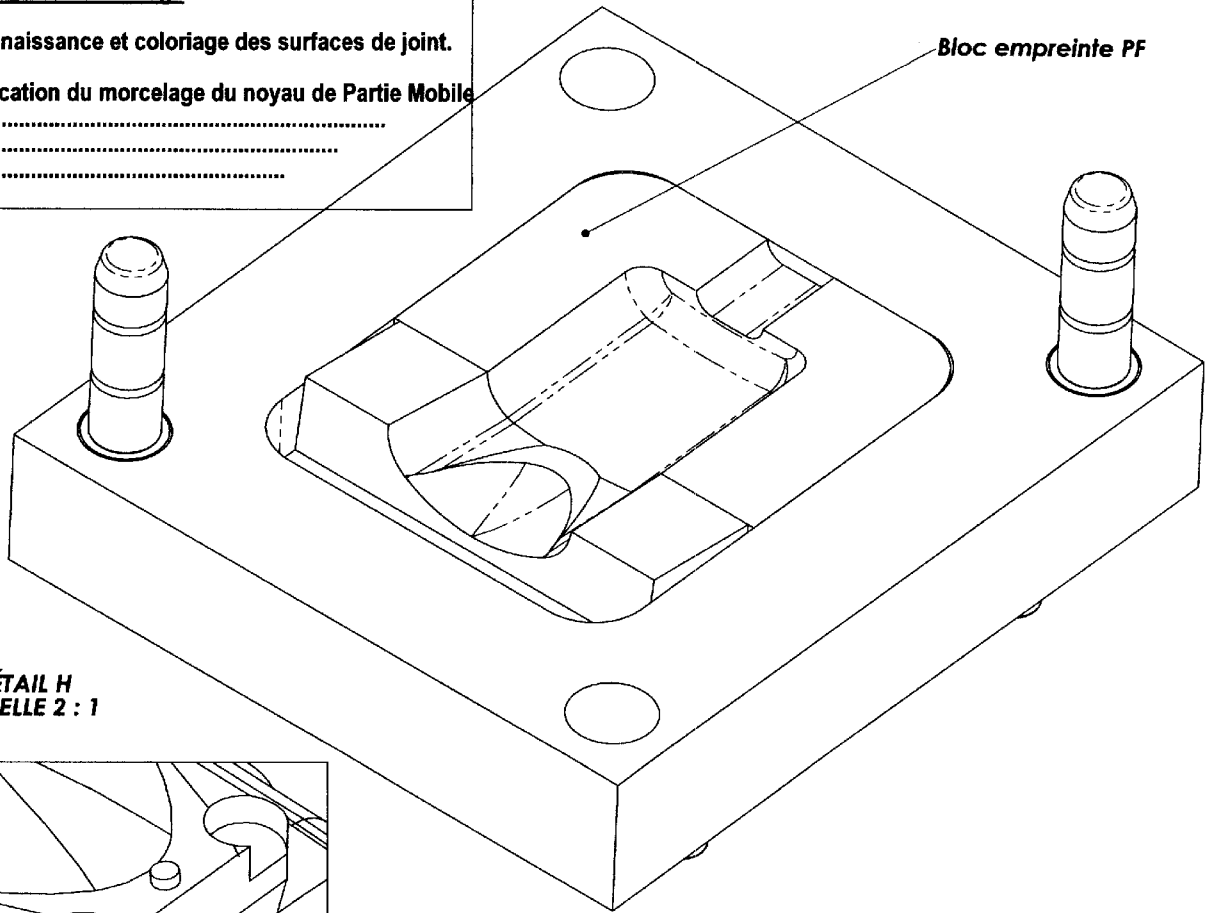


Question 5: Etude de moulage

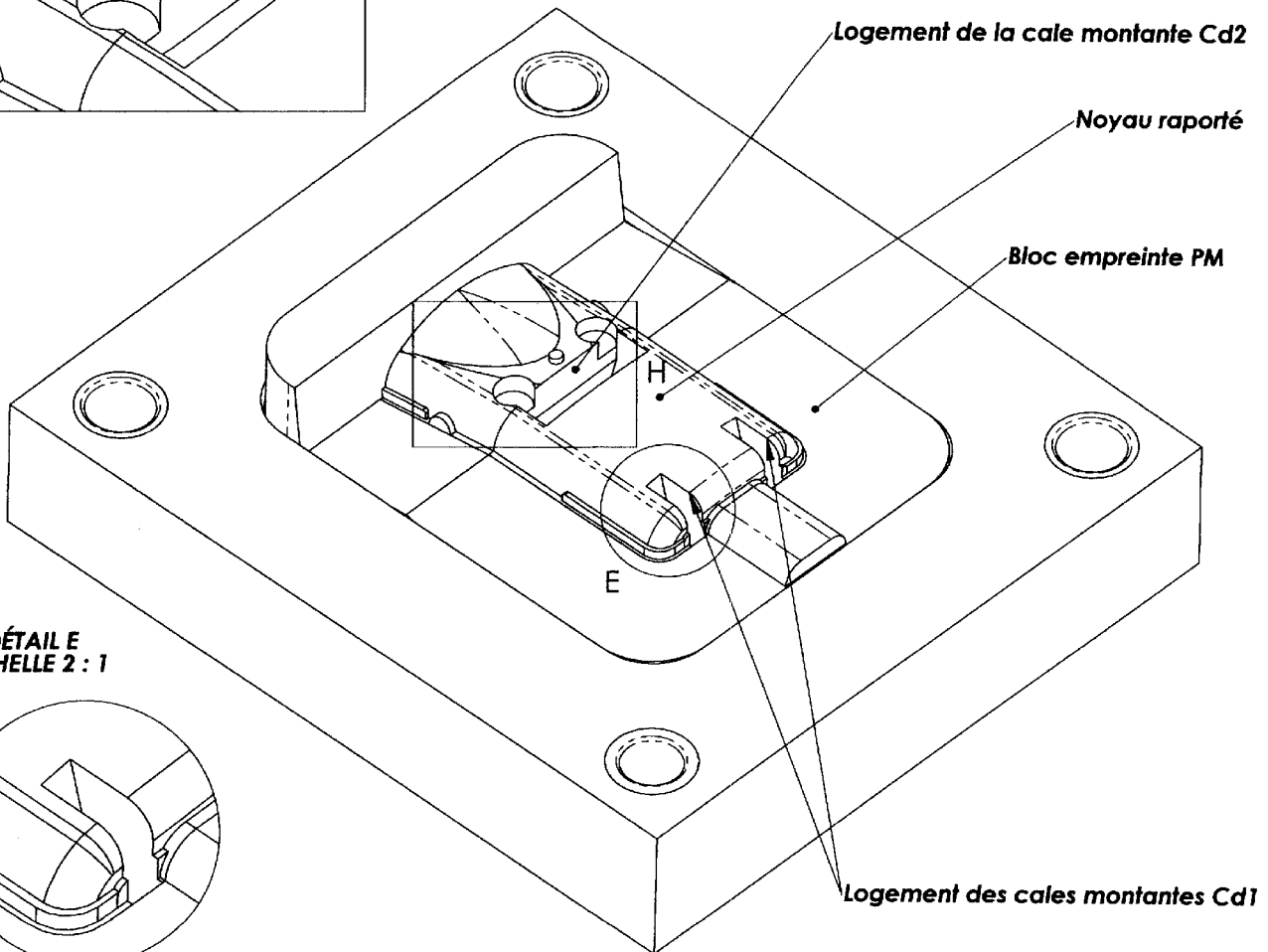
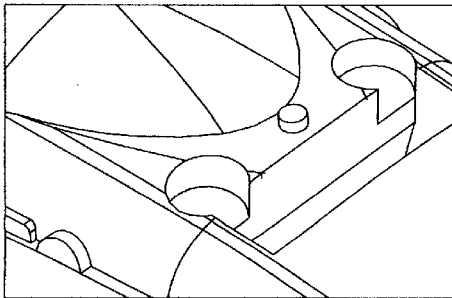
Q55: Reconnaissance et coloriage des surfaces de joint.

Q56: Justification du morcelage du noyau de Partie Mobile

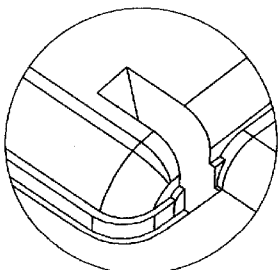
.....
.....
.....



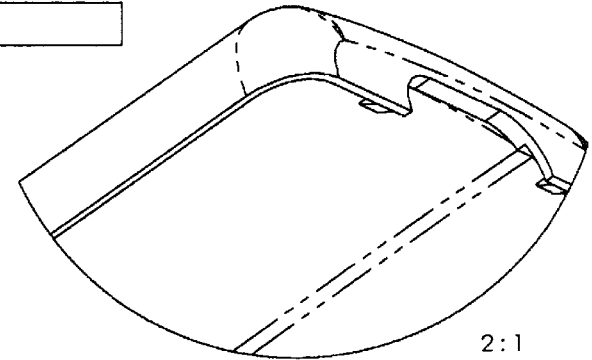
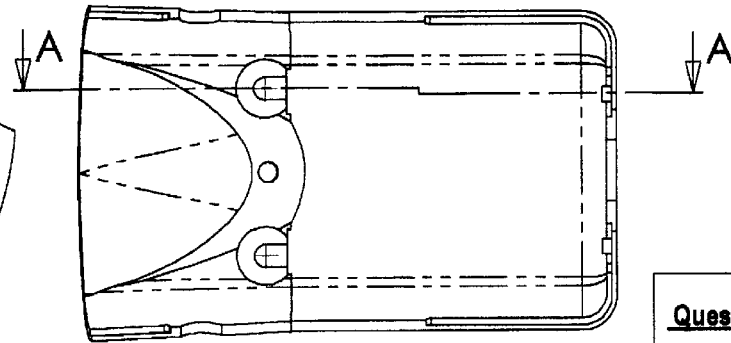
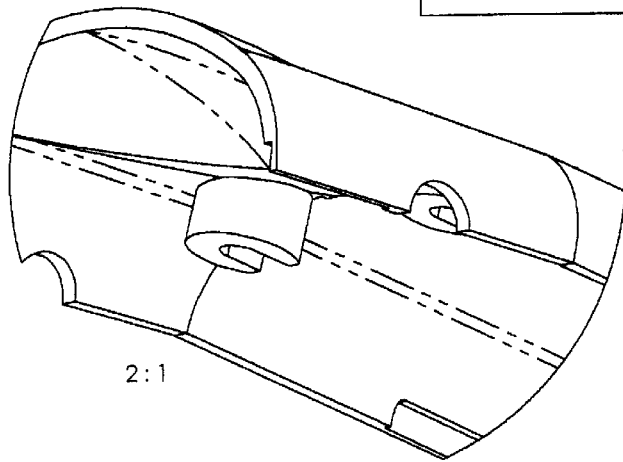
**DÉTAIL H
ECHELLE 2 : 1**



**DÉTAIL E
ECHELLE 2 : 1**



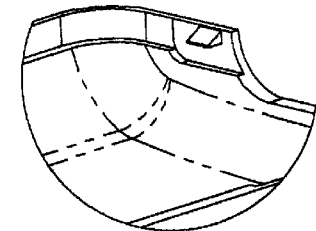
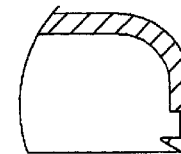
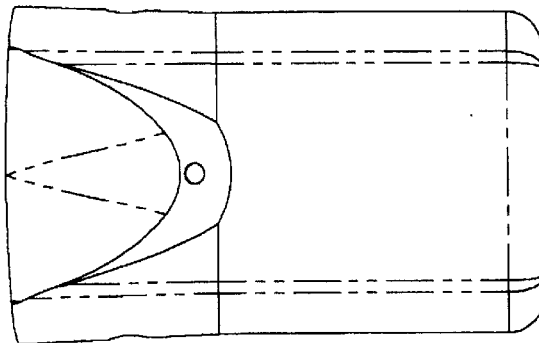
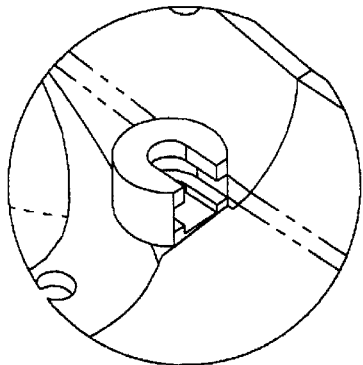
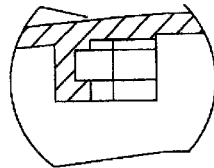
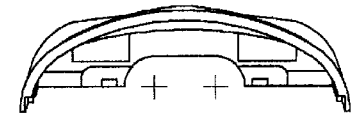
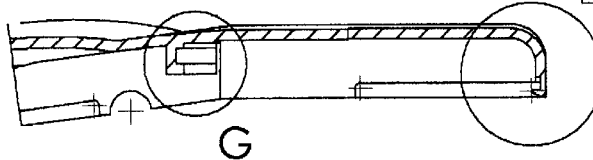
PARTIE 3: Lignes de joint



Question 5: Etude de moulage
Q57: Tracé des lignes de joint.
- externe en rouge
- interne en bleu
- éléments mobiles en vert

A-A

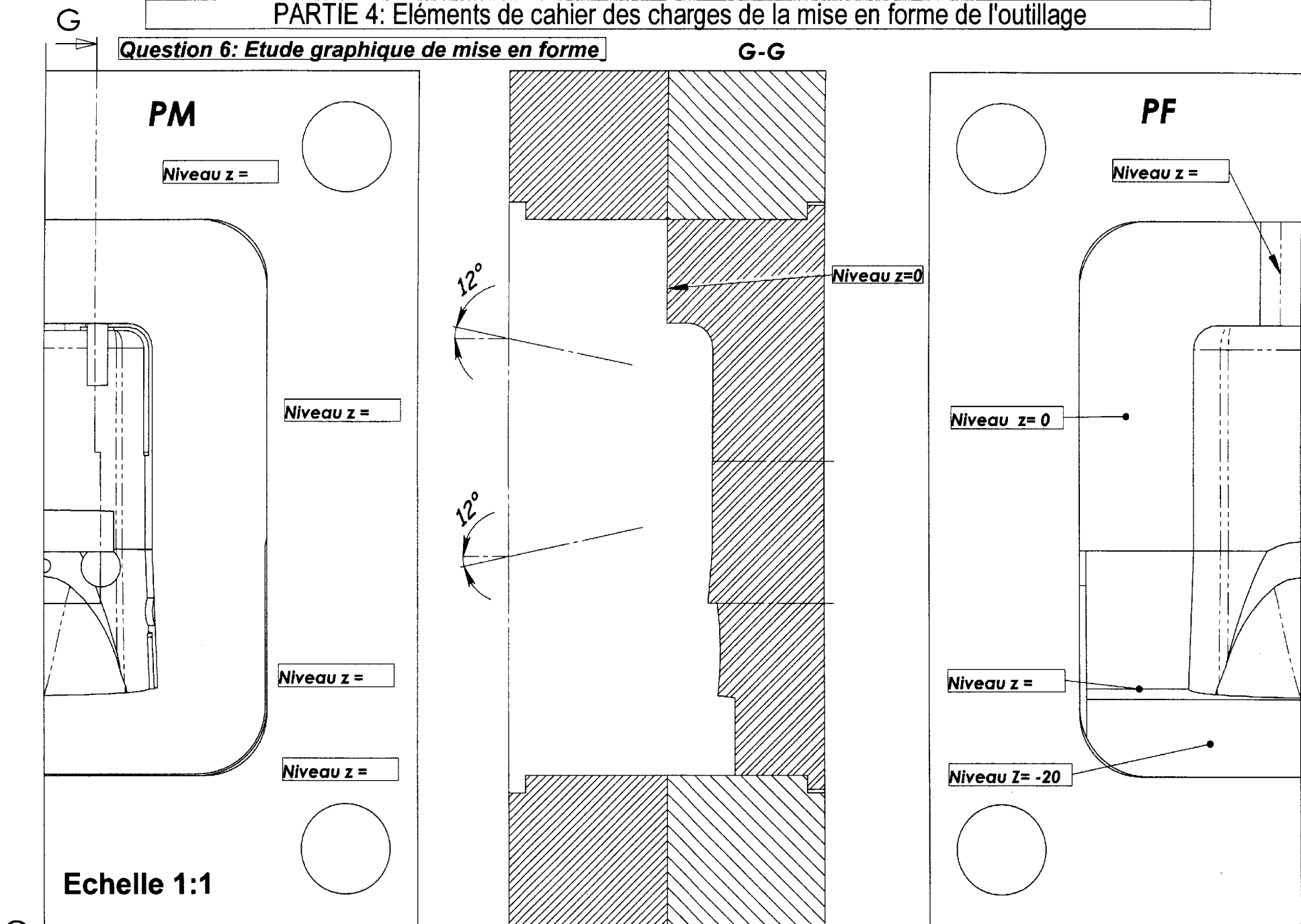
H



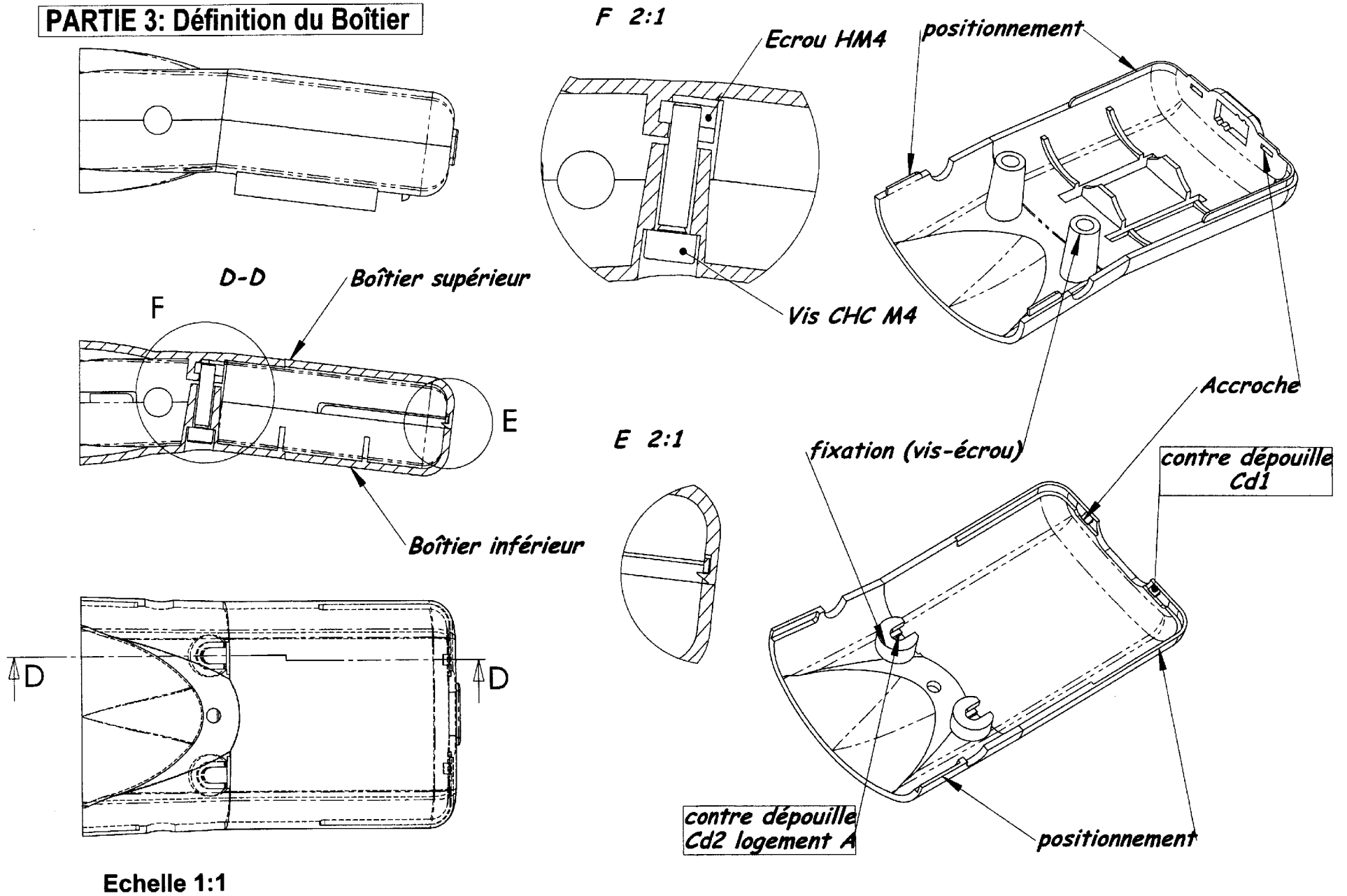
PARTIE 4: Eléments de cahier des charges de la mise en forme de l'outillage

Question 6: Etude graphique de mise en forme

G-G



PARTIE 3: Définition du Boîtier



Echelle 1:1

3