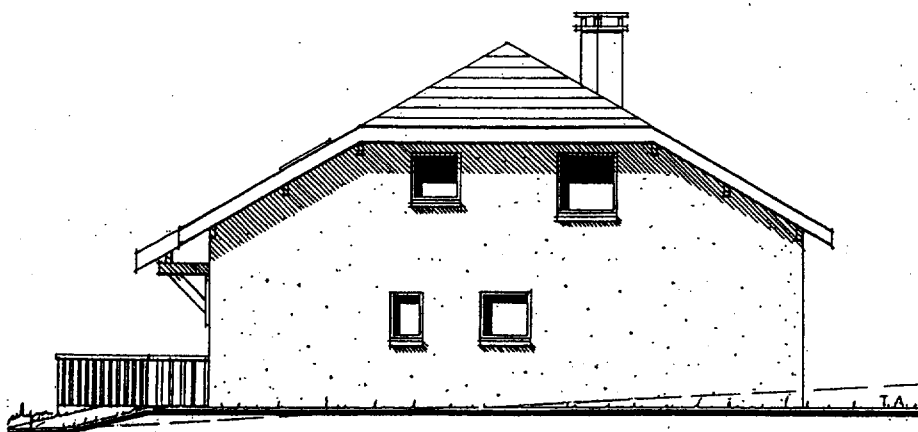


# \* MAISON INDIVIDUELLE \*



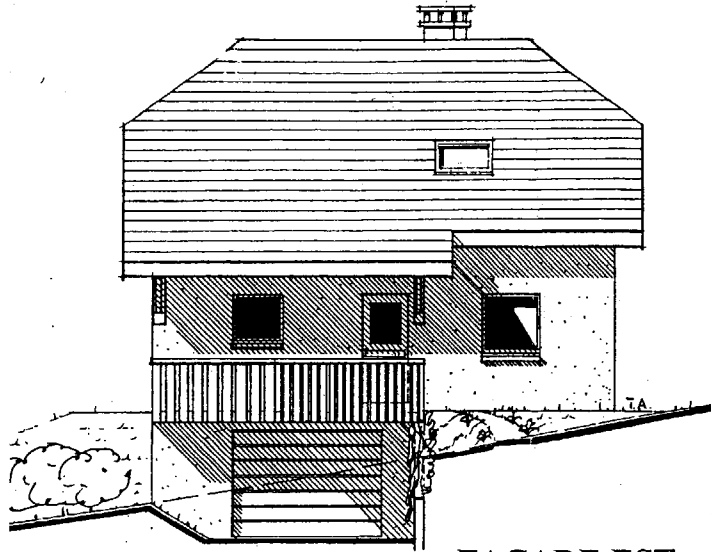
## DOSSIER TECHNIQUE

### CONSTITUTION DU DOSSIER :

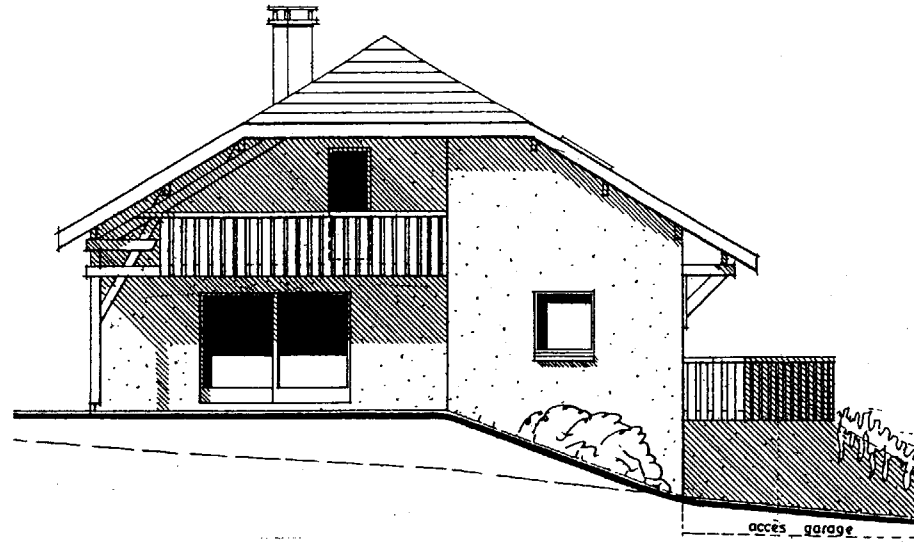
Ce dossier comprend 4 documents :

- \* Document Technique DT1 : Façades
- \* Document Technique DT2 : Etage
- \* Document Technique DT3 : Sous-sol et coupe de principe
- \* Document Technique DT4 : Structure porteuse

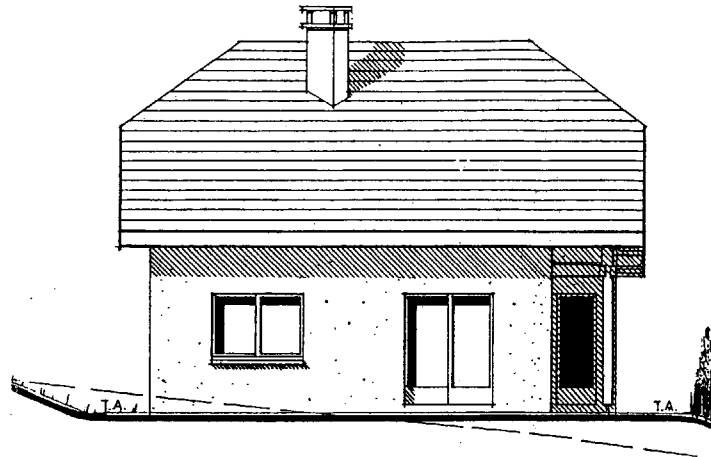
| <b>TOUTES ACADEMIES</b>                         |                    |                                    |  |
|---|--------------------|------------------------------------|--|
| <b>EXAMEN : BREVET DE TECHNICIEN SUPERIEUR</b>  |                    | <b>SESSION : 2007.</b>             |  |
| <b>SPECIALITE : CHARPENTE - COUVERTURE</b>      |                    | <b>SUJET :</b>                     |  |
| <b>EPREUVE E4 : ETUDE DES OUVRAGES</b>          |                    | <b>THEME : MAISON INDIVIDUELLE</b> |  |
| <b>SS EPREUVE U4.1. : PREPARATION DU PROJET</b> | <b>DUREE : 3 h</b> | <b>COEF : 2</b>                    |  |



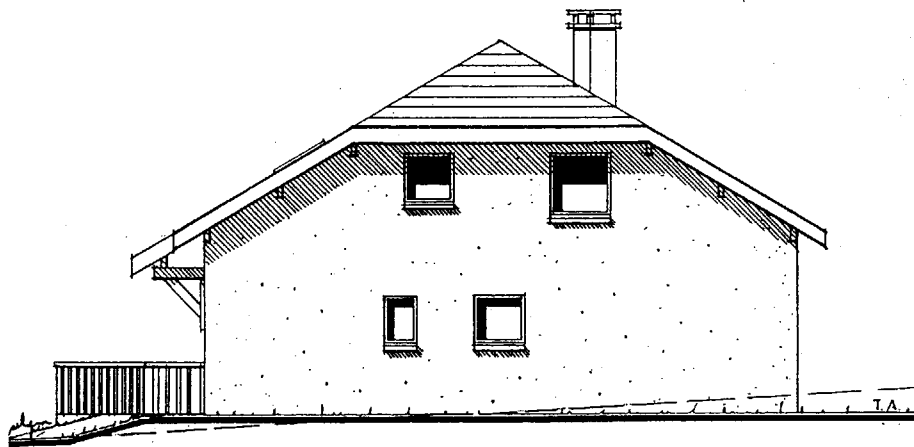
FACADE EST



FACADE SUD



FACADE OUEST



FACADE NORD

MAISON INDIVIDUELLE (projet architecte)

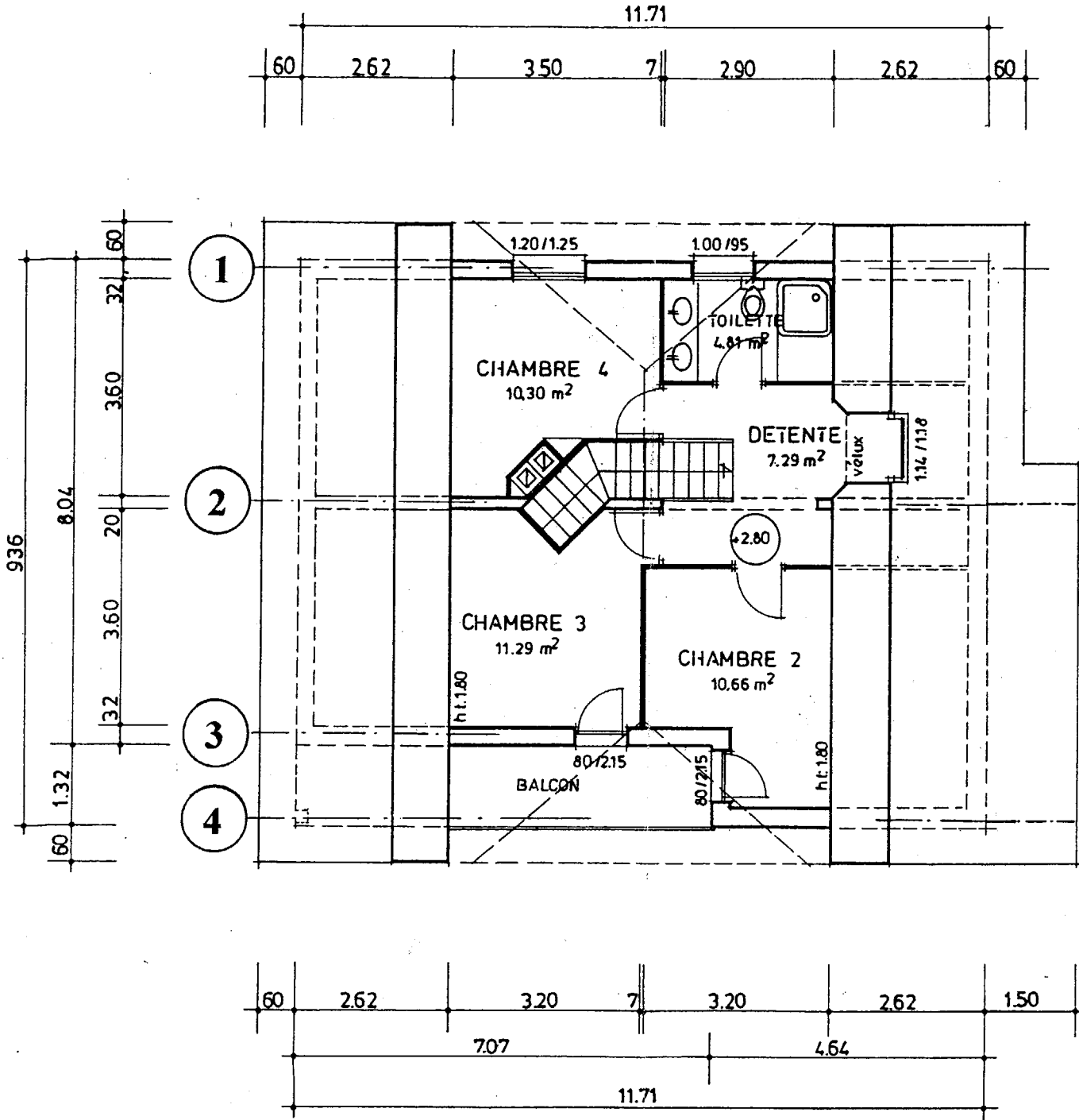
Façades

Ech. ≈ 1/150

DOCUMENT TECHNIQUE DT1

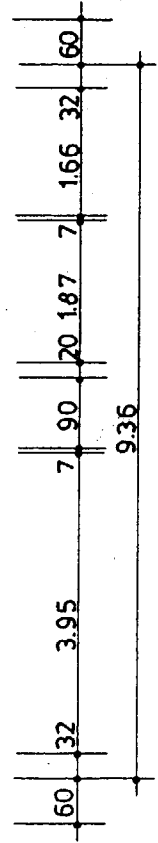
42





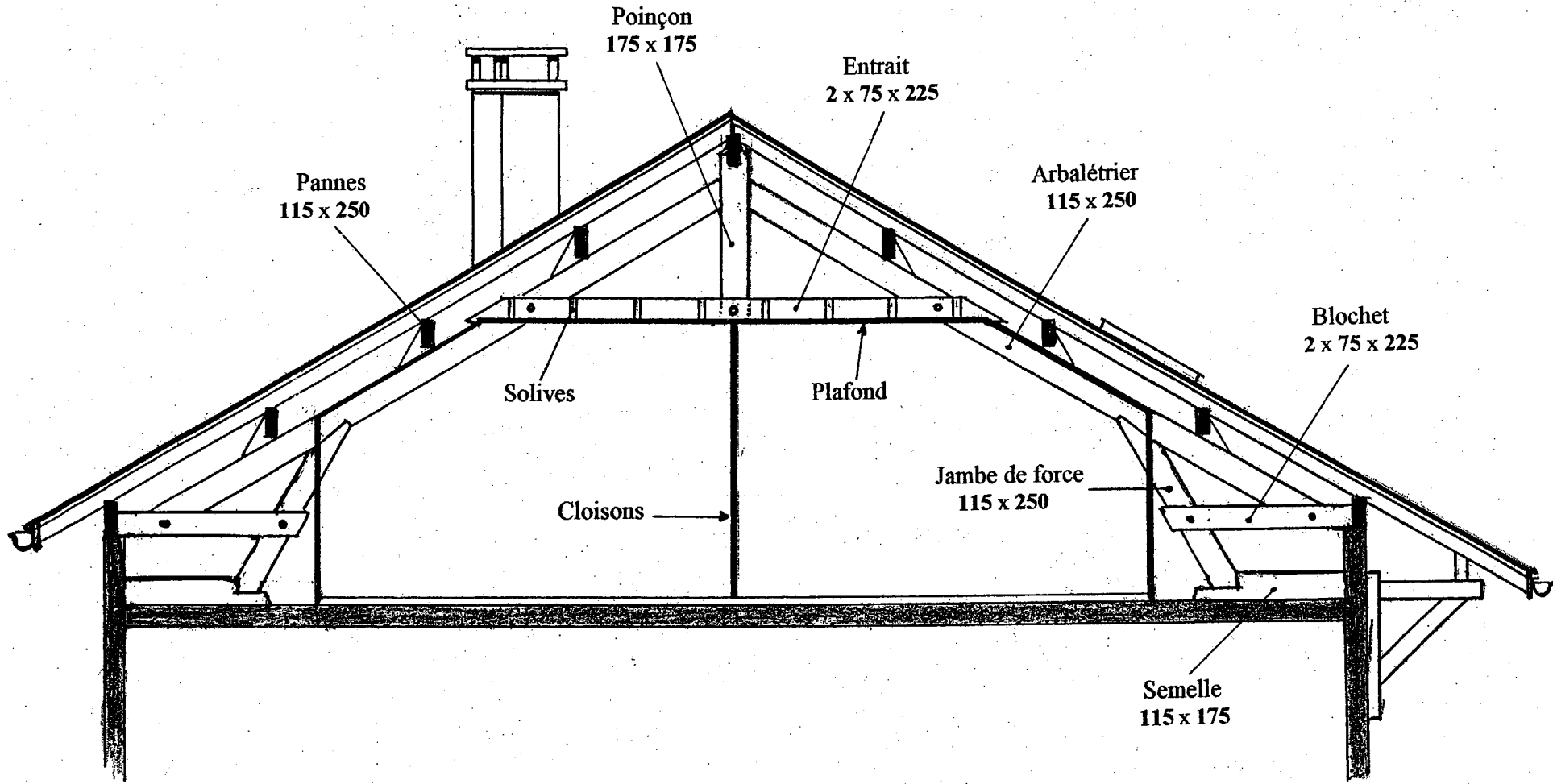
COUPE B-B

ETAGE



|  |                   |
|--|-------------------|
| <b>MAISON INDIVIDUELLE (projet architecte)</b> |                   |
| <b>Etage</b>                                   | <b>Ech. 1/100</b> |
| <b>DOCUMENT TECHNIQUE DT3</b>                  |                   |

69



**MAISON INDIVIDUELLE (projet entrepreneur)**

Structure porteuse file 2

Ech.  $\approx$  1/50

DOCUMENT TECHNIQUE DT4

50