

BTS CHARPENTE - COUVERTURE

SESSION 2007

ETUDE DE REALISATION

SOUS EPREUVE U 5.1 : Organisation de la réalisation

Durée : 3 heures

Coefficient : 3

MAISON INDIVIDUELLE

Composition du dossier technique :

DT1- Façades maison

DT2- Sous-sol et coupe de principe

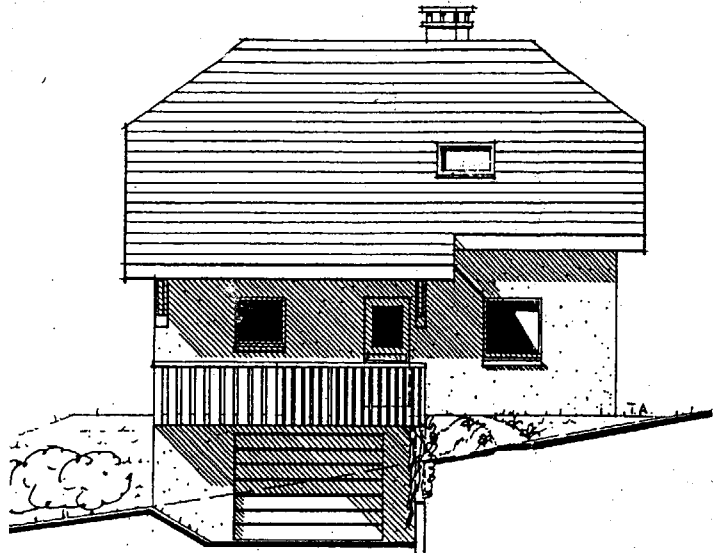
DT3- Coupe étage

DT4- Dessin de la console

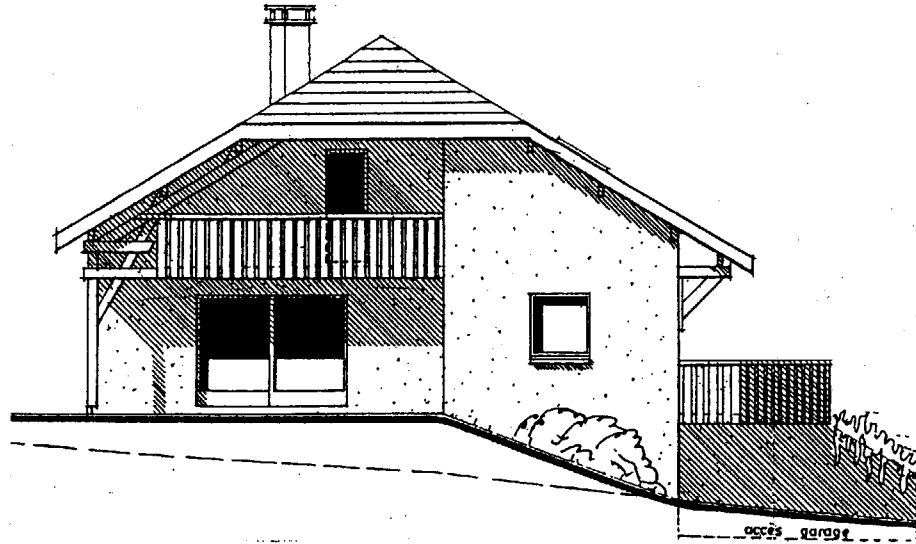
DT5- Géométrie de la toiture

DT6 à DT8 Bordereau de prix

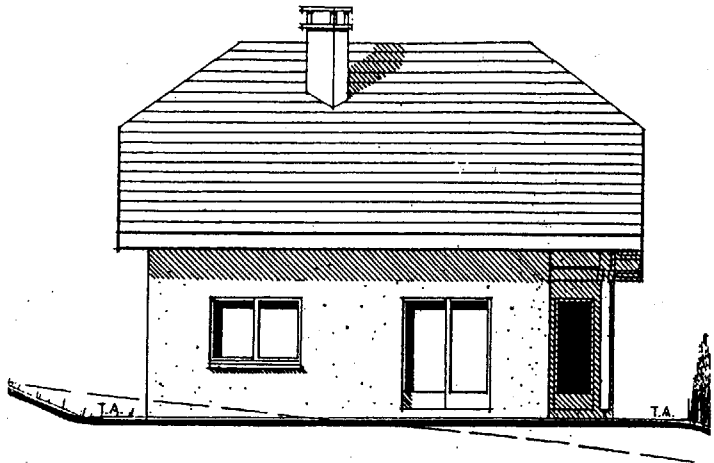
DOSSIER TECHNIQUE



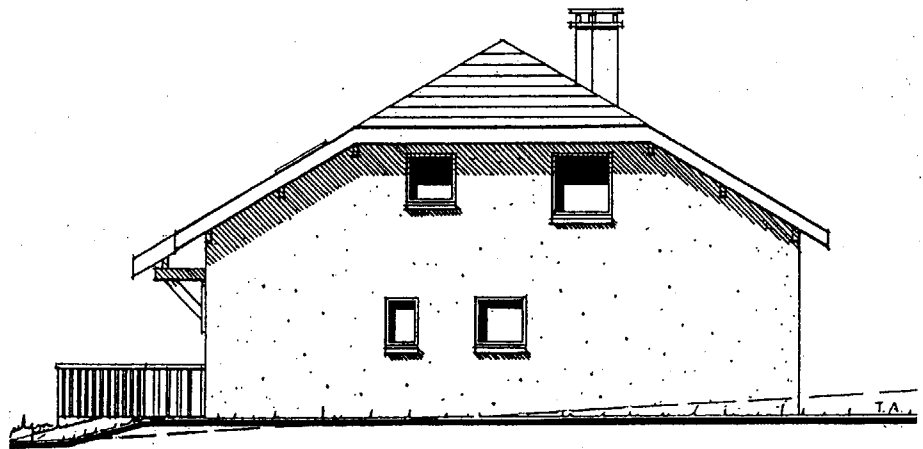
FACADE EST



FACADE SUD



FACADE OUEST



FACADE NORD

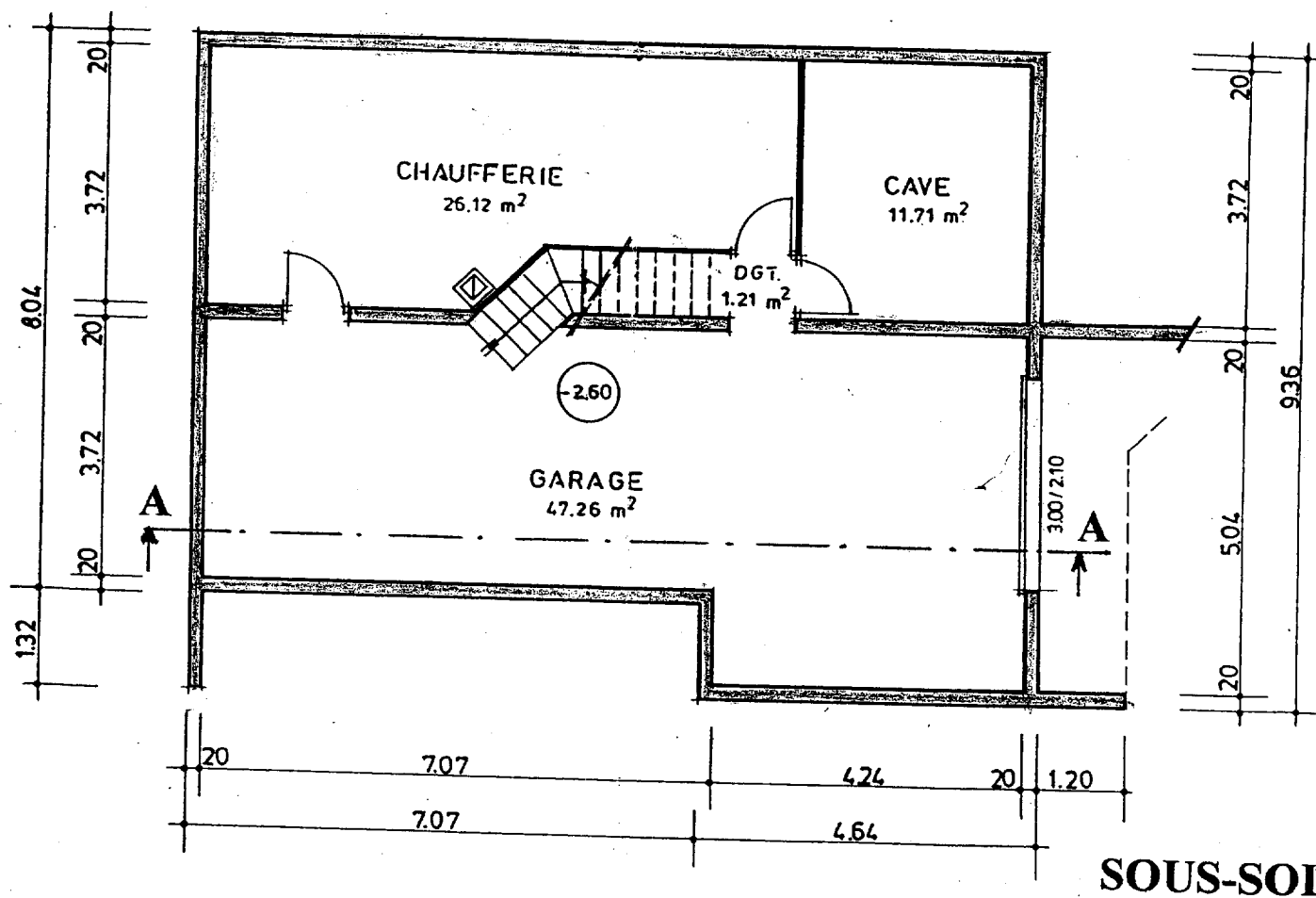
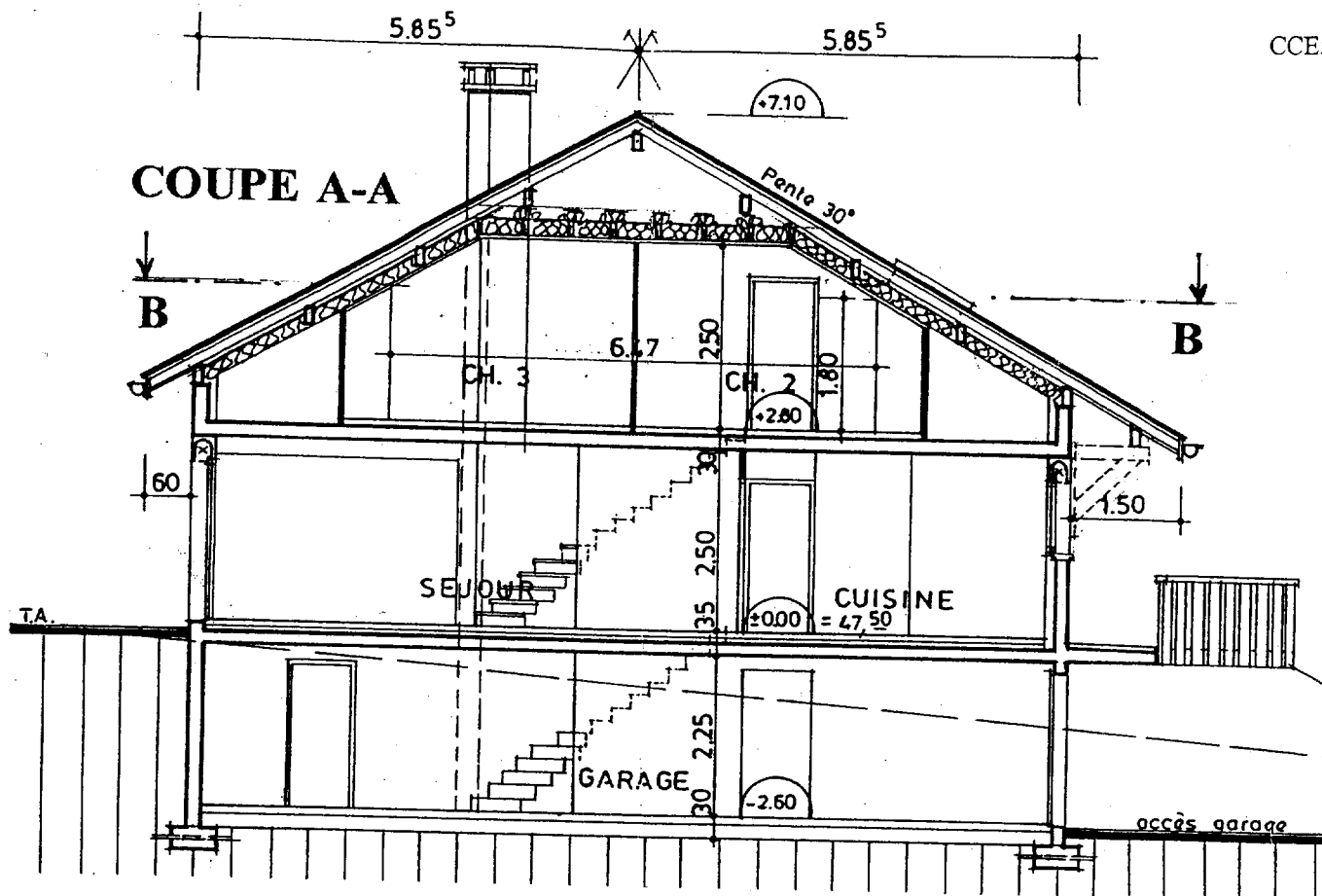
MAISON INDIVIDUELLE (projet architecte)

Façades

Ech. ≈ 1/150

DOCUMENT TECHNIQUE DT1

64



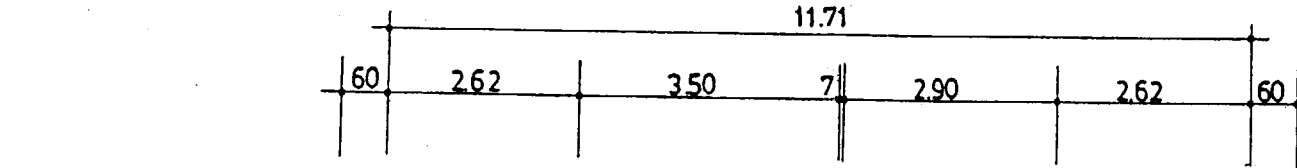
MAISON INDIVIDUELLE (projet architecte)

Sous-sol et coupe de principe

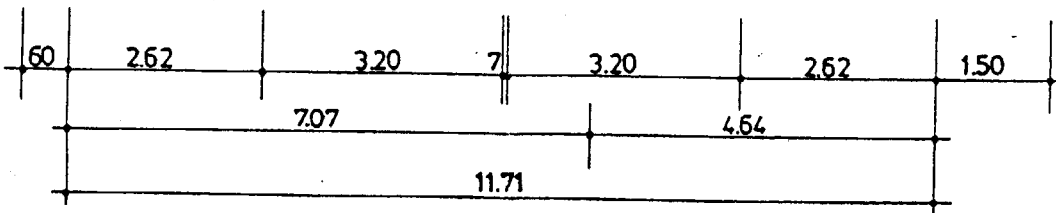
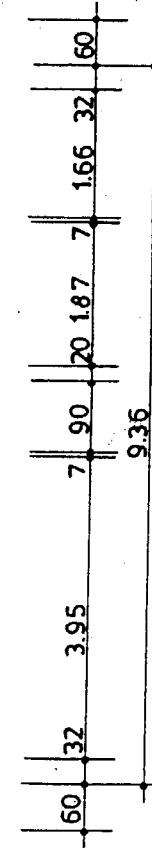
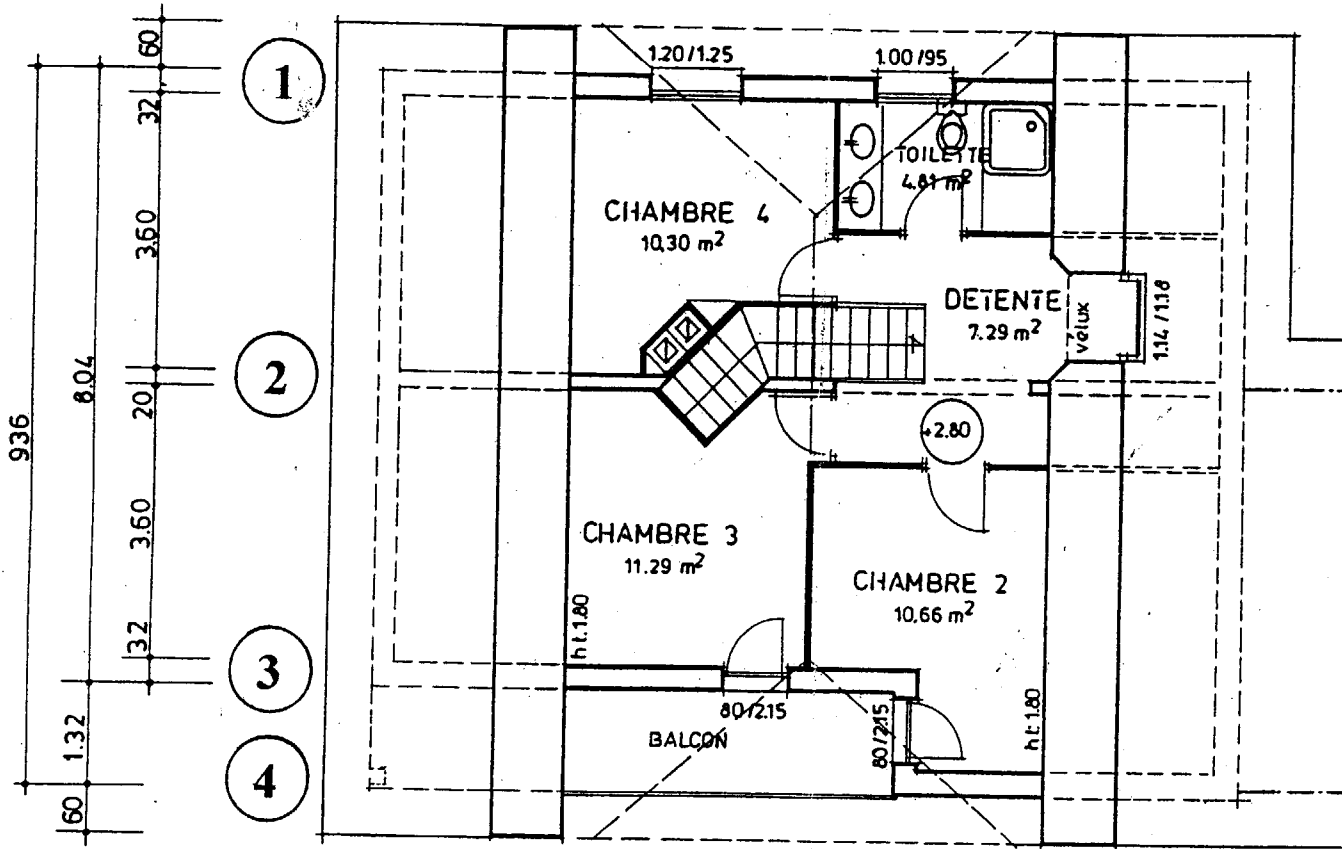
Ech. 1/100

DOCUMENT TECHNIQUE DT2

25



COUPE B-B



ETAGE

MAISON INDIVIDUELLE (projet architecte)	
Etage	Ech. 1/100
DOCUMENT TECHNIQUE DT3	

ll