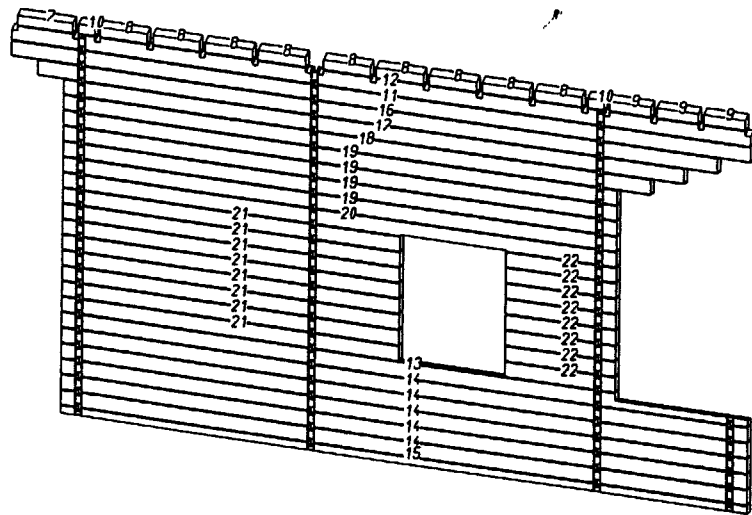
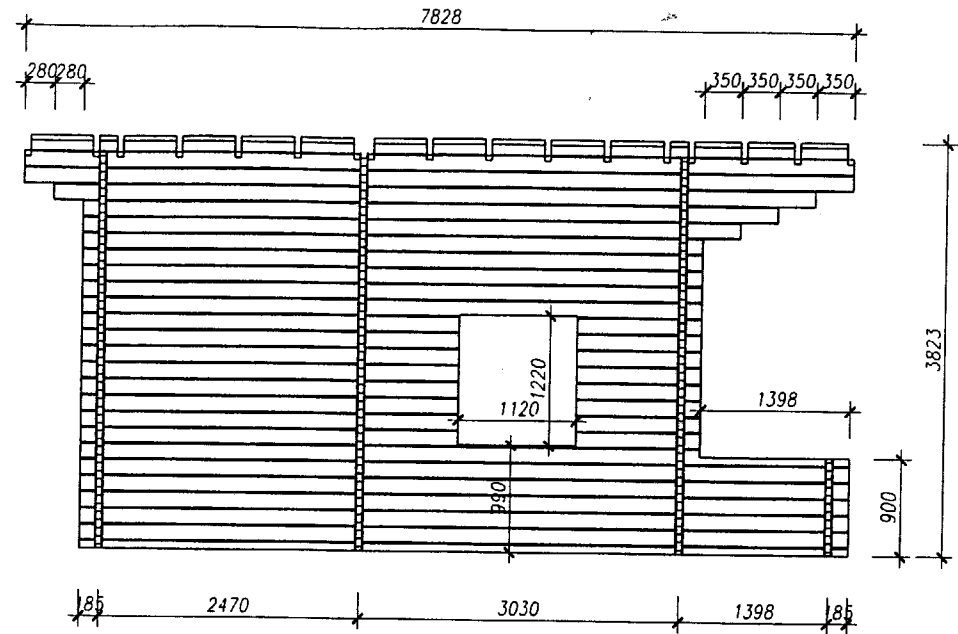
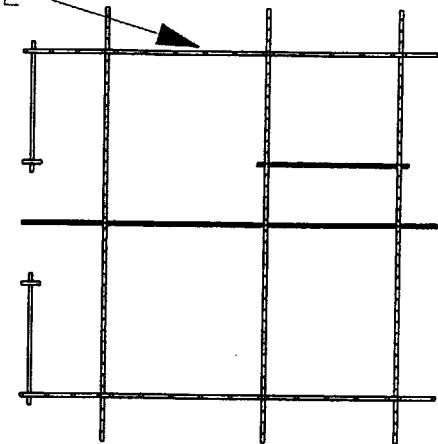


No.LP!	Nom	!Nomb!	Larg. rée!	Haut. rée!	Long. rée!	Volume br!
7!	ENTRETOISE	1!	70!	147.6!	590.0!	0.006!
8!	ENTRETOISE	9!	70!	147.6!	500.0!	0.046!
9!	ENTRETOISE	3!	70!	147.6!	436.0!	0.014!
10!	ENTRETOISE	2!	70!	147.6!	170.0!	0.004!
11!	MADRIER	1!	70!	165.0!	7828.0!	0.090!
12!	MADRIER	1!	70!	165.0!	7828.0!	0.090!
13!	MADRIER	1!	70!	165.0!	7268.0!	0.084!
14!	MADRIER	5!	70!	165.0!	7268.0!	0.420!
15!	MADRIER	1!	70!	90.0!	7268.0!	0.046!
16!	MADRIER	1!	70!	165.0!	7198.5!	0.083!
17!	MADRIER	1!	70!	165.0!	6569.0!	0.076!
18!	MADRIER	1!	70!	165.0!	6219.5!	0.072!
19!	MADRIER	4!	70!	165.0!	5870.0!	0.271!
20!	MADRIER	1!	70!	165.0!	5870.0!	0.068!
21!	MADRIER	8!	70!	165.0!	3580.0!	0.331!
22!	MADRIER	8!	70!	165.0!	1170.0!	0.108!
Somme: Groupe: Long pan E		48!				1.809!



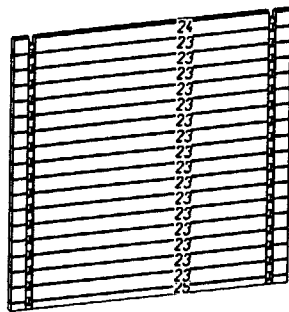
Long pan E



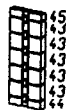
MADRIER LONG PAN E

Dessin CADWORK par: ..... le: .....	CHALET EDELWEISS	Echelle: 1:50
Nom de fichier: Long.pan.E.2d..	DT 6	Format A3

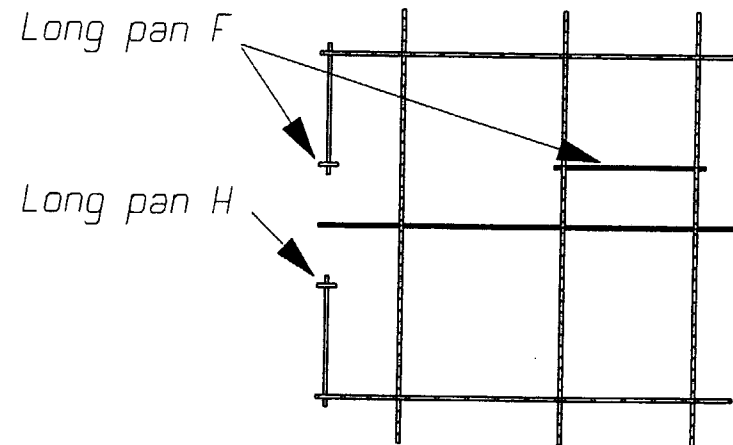
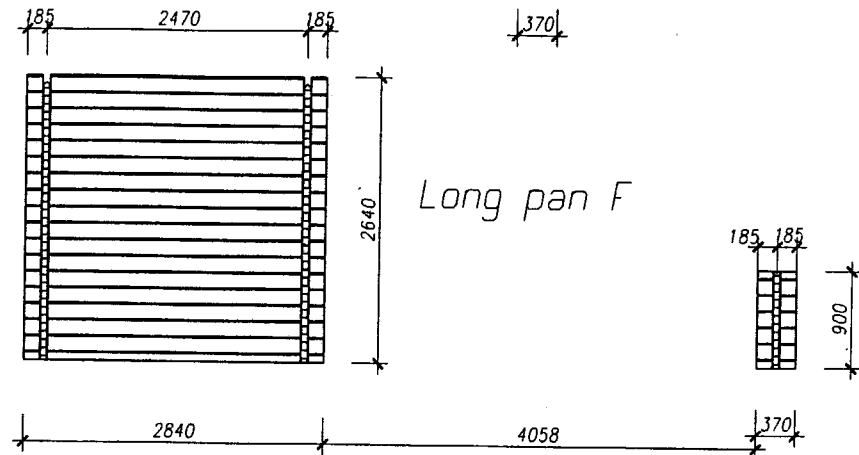
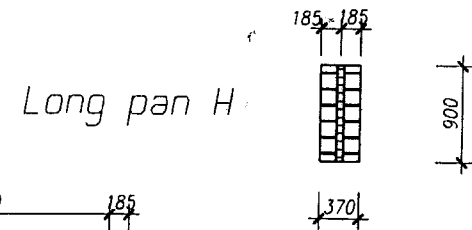
!No.LP!	Nom	!Nombr!	Larg. rée!	Haut. rée!	Long. rée!	Volume br!
! 23!	MADRIER	! 16!	70!	165.0!	2840.0!	0.525!
! 24!	MADRIER	! 1!	70!	165.0!	2840.0!	0.033!
! 25!	MADRIER	! 1!	70!	90.0!	2840.0!	0.018!
! 26!	MADRIER	! 5!	70!	165.0!	370.0!	0.021!
! 27!	MADRIER	! 1!	70!	90.0!	370.0!	0.002!
! 28!	MADRIER	! 1!	70!	75.0!	370.0!	0.002!
Somme: Groupe: Long pan F		! 25!	!	!	!	0.601!



!No.LP!	Nom	!Nombr!	Larg. rée!	Haut. rée!	Long. rée!	Volume br!
! 43!	MADRIER	! 5!	165!	370.0!	70.0!	0.021!
! 44!	MADRIER	! 1!	90!	370.0!	70.0!	0.002!
! 45!	MADRIER	! 1!	75!	370.0!	70.0!	0.002!
Somme: Groupe: Long pan H		! 7!	!	!	!	0.026!

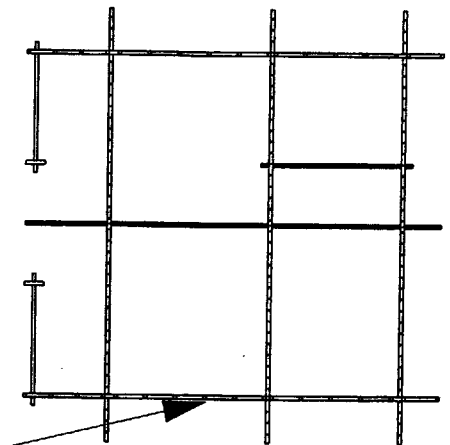
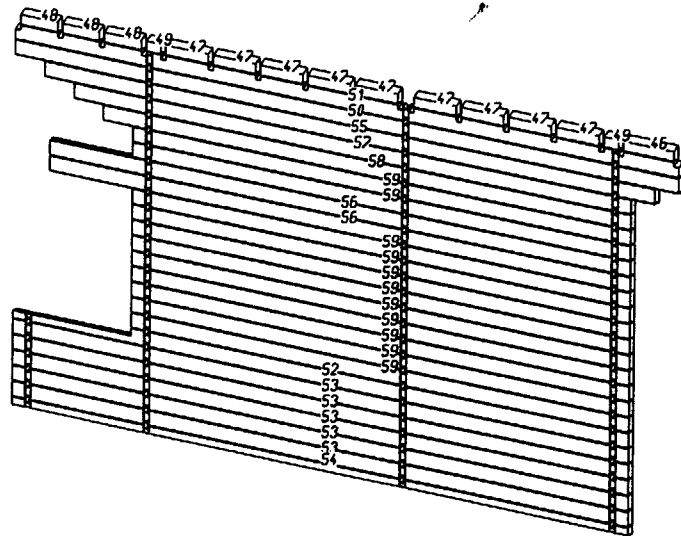
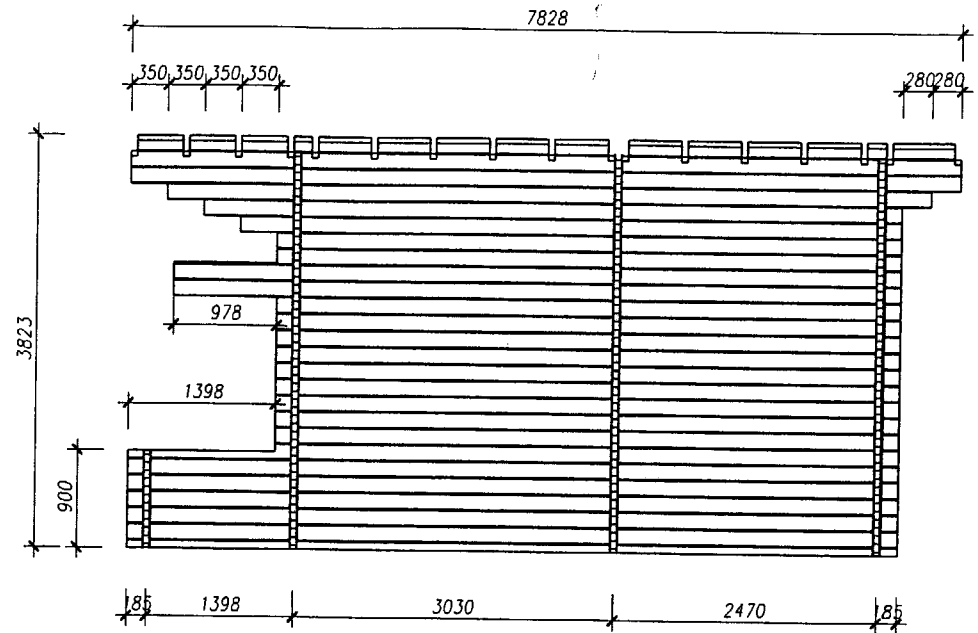


MADRIER LONG PAN F ET H



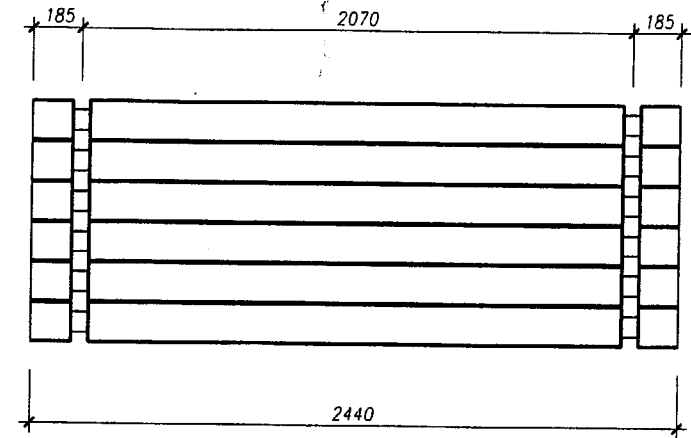
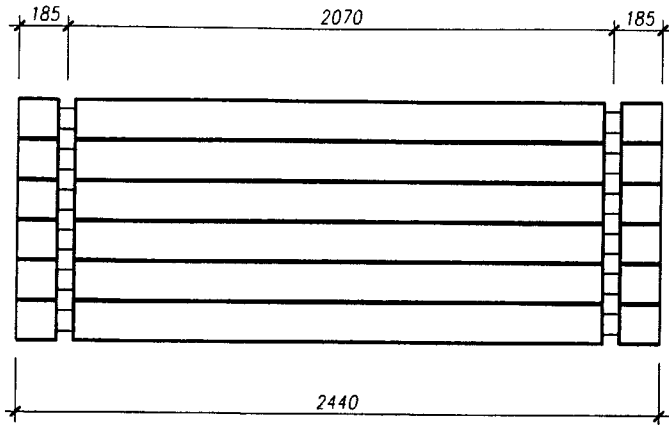
Dessin CADWORK par: ..... le: .....	CHALET EDELWEISS	Echelle: 1: 50
Nom de fichier: Long.pan.FH.2d	DT 7	Format A3

No.LP!	Nom	!Nombr!	Larg. rée!	Haut. rée!	Long. rée!	Volume br!
! 46!	ENTRETOISE	! 1!	70!	147.6!	590.0!	0.006!
! 47!	ENTRETOISE	! 9!	70!	147.6!	500.0!	0.046!
! 48!	ENTRETOISE	! 3!	70!	147.6!	436.0!	0.014!
! 49!	ENTRETOISE	! 2!	70!	147.6!	170.0!	0.004!
! 50!	MADRIER	! 1!	70!	165.0!	7828.0!	0.090!
! 51!	MADRIER	! 1!	70!	165.0!	7828.0!	0.090!
! 52!	MADRIER	! 1!	70!	165.0!	7268.0!	0.084!
! 53!	MADRIER	! 5!	70!	165.0!	7268.0!	0.420!
! 54!	MADRIER	! 1!	70!	90.0!	7268.0!	0.046!
! 55!	MADRIER	! 1!	70!	165.0!	7198.5!	0.083!
! 56!	MADRIER	! 2!	70!	165.0!	6848.0!	0.158!
! 57!	MADRIER	! 1!	70!	165.0!	6569.0!	0.076!
! 58!	MADRIER	! 1!	70!	165.0!	6219.5!	0.072!
! 59!	MADRIER	! 11!	70!	165.0!	5870.0!	0.746!
Somme: Groupe: Long pan I		! 40!	!	!	!	1.935!

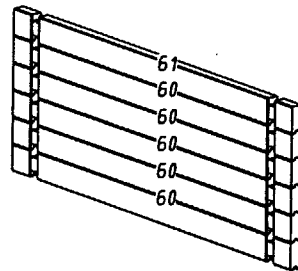
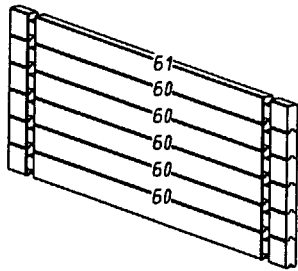


MADRIER LONG PAN I

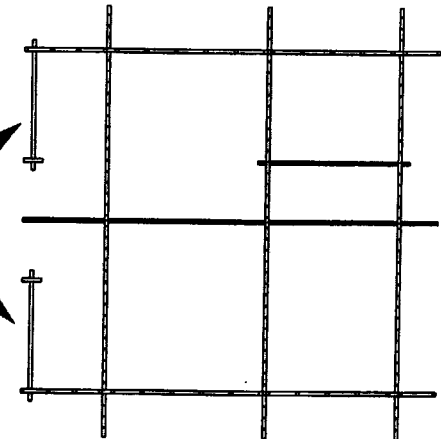
Dessin CADWORK par: .....	CHALET EDELWEISS	Echelle: 1:50
le: .....		 Format A3
Nom de fichier: Long.pan.I.2d...	DT 8	



No. LP	Nom	Nombre	Larg. rée	Haut. rée	Long. rée	Volume br
60	MADRIER	10	70	165.0	2440.0	0.282
61	MADRIER	2	70	150.0	2440.0	0.051
Somme: Groupe: Pignon A		12				0.333



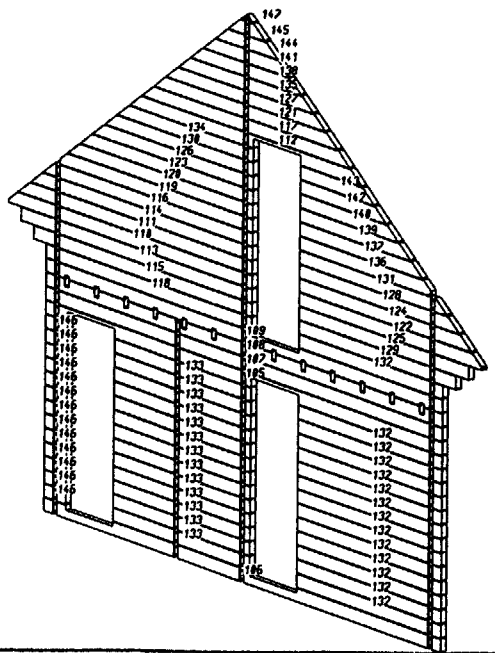
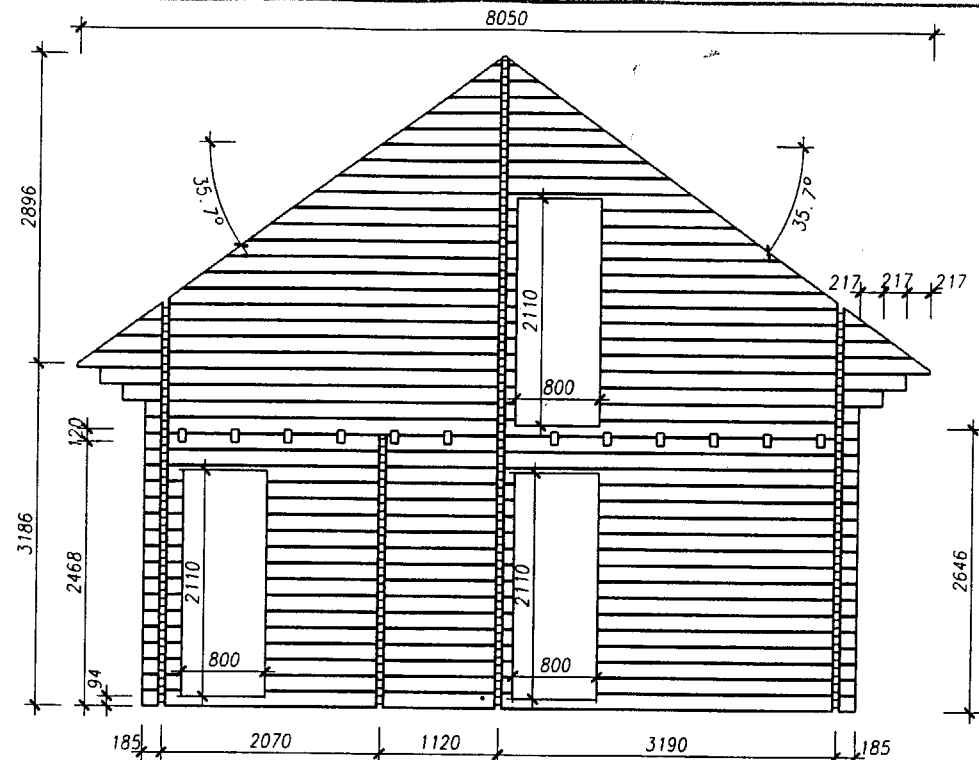
Mur madrier pignon A



MADRIER PIGNON A

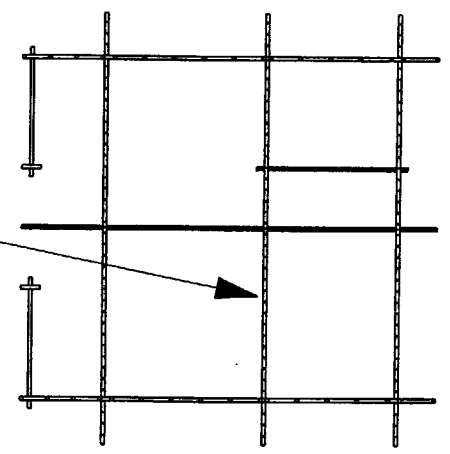
Dessin CADWORK par: ..... le: .....	CHALET EDELWEISS	Echelle: 1:20
Nom de fichier: ...Pignon.A.2d...	DT 9	Format A3

No.LPI	Nom	!Nomb!	Larg. réel!	Haut. réel!	Long. réel!	Volume br!	
105	MADRIER	1	701	165.0!	6750.0!	0.078!	
106	MADRIER	1	701	165.0!	6750.0!	0.078!	
107	MADRIER	1	701	165.0!	6750.0!	0.078!	
108	MADRIER	1	701	165.0!	6750.0!	0.078!	
109	MADRIER	1	701	165.0!	6750.0!	0.078!	
110	MADRIER	1	701	165.0!	4160.0!	0.048!	
111	MADRIER	1	701	165.0!	4001.7!	0.046!	
112	MADRIER	1	701	165.0!	3900.9!	0.046!	
113	MADRIER	1	701	165.0!	3943.3!	0.046!	
114	MADRIER	1	701	165.0!	3793.3!	0.044!	
115	MADRIER	1	701	165.0!	3726.7!	0.043!	
116	MADRIER	1	701	165.0!	3584.8!	0.041!	
117	MADRIER	1	701	165.0!	3563.9!	0.041!	
118	MADRIER	1	701	165.0!	3510.0!	0.041!	
119	MADRIER	1	701	165.0!	3295.0!	0.038!	
120	MADRIER	1	701	165.0!	3167.8!	0.037!	
121	MADRIER	1	701	165.0!	3146.9!	0.036!	
122	MADRIER	1	701	165.0!	3090.0!	0.036!	
123	MADRIER	1	701	165.0!	2959.3!	0.034!	
124	MADRIER	1	701	165.0!	2931.7!	0.034!	
125	MADRIER	1	701	165.0!	2873.3!	0.033!	
126	MADRIER	1	701	165.0!	2750.9!	0.032!	
127	MADRIER	1	701	165.0!	2730.0!	0.032!	
128	MADRIER	1	701	165.0!	2723.3!	0.031!	
129	MADRIER	1	701	165.0!	2656.7!	0.031!	
130	MADRIER	1	701	165.0!	2542.4!	0.029!	
131	MADRIER	1	701	165.0!	2514.8!	0.029!	
132	MADRIER	1	141	701	165.0!	2440.0!	0.395!
133	MADRIER	1	131	701	165.0!	2340.0!	0.351!
134	MADRIER	1	701	165.0!	2333.9!	0.027!	
135	MADRIER	1	701	165.0!	2313.0!	0.027!	
136	MADRIER	1	701	165.0!	2225.0!	0.026!	
137	MADRIER	1	701	165.0!	2097.8!	0.024!	
138	MADRIER	1	701	165.0!	1896.1!	0.022!	
139	MADRIER	1	701	165.0!	1889.3!	0.022!	
140	MADRIER	1	701	165.0!	1580.8!	0.019!	
141	MADRIER	1	701	165.0!	1479.1!	0.017!	
142	MADRIER	1	701	165.0!	1472.4!	0.017!	
143	MADRIER	1	701	165.0!	1263.9!	0.015!	
144	MADRIER	1	701	165.0!	1062.1!	0.012!	
145	MADRIER	1	701	165.0!	645.2!	0.007!	
146	MADRIER	1	131	701	165.0!	370.0!	0.056!
147	MADRIER	1	701	82.1!	228.2!	0.001!	
Somme: Groupe: Pignon C		1	801	!	!	2.255!	



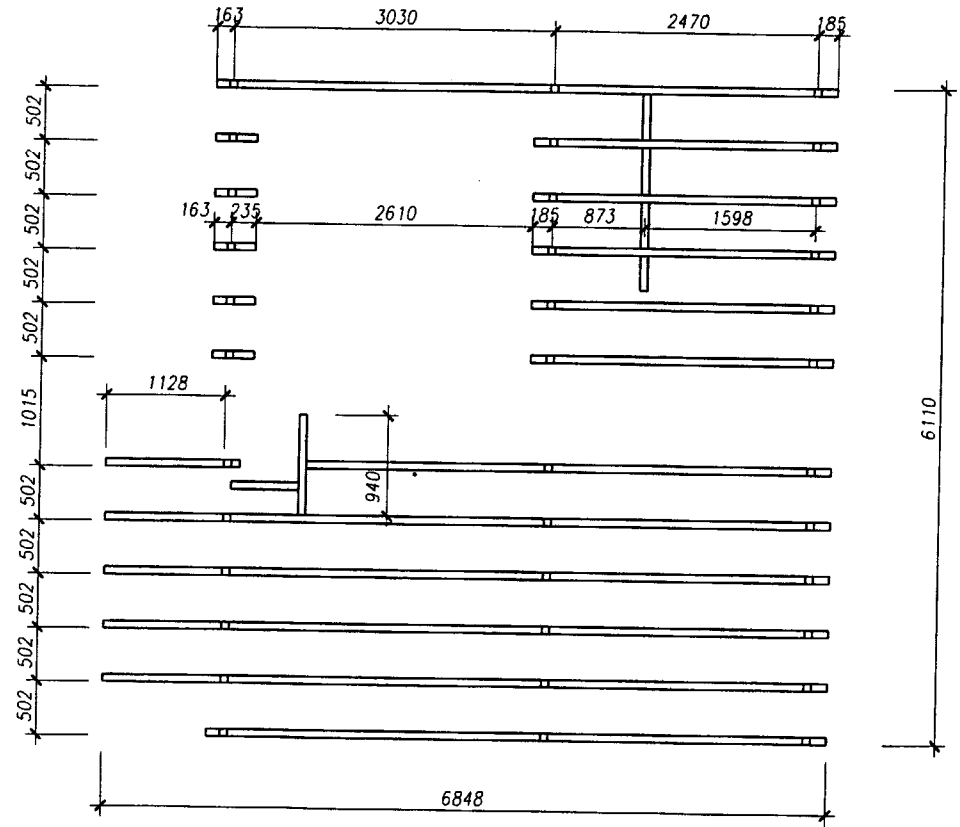
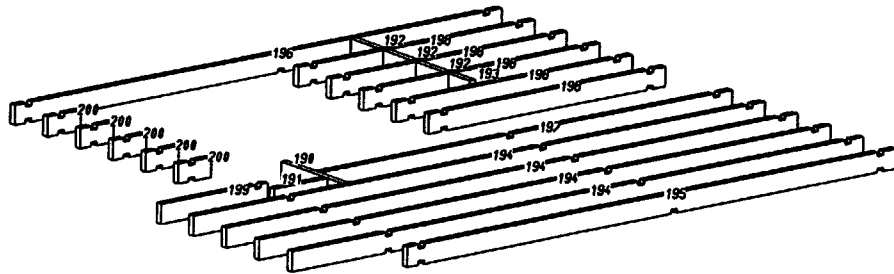
Mur madrier pignon C

# MADRIER PIGNON C



Dessin CADWORK par: .....	CHALET EDELWEISS	Echelle: 1: 50
le: .....		
Nom de fichier: Pignon.C.2d.....	DT 10	

!No.LP!	Nom	!Nomb!	!Larg. rée!	!Haut. rée!	!Long. rée!	!Volume br!
! 190!	CHEVETRE	! 1!	70!	195.0!	940.0!	0.013!
! 191!	CHEVETRE	! 1!	70!	195.0!	639.8!	0.009!
! 192!	ENTRETOISE	! 3!	70!	195.0!	432.5!	0.018!
! 193!	ENTRETOISE	! 1!	70!	195.0!	322.5!	0.004!
! 194!	SOLIVE	! 4!	70!	195.0!	6848.0!	0.374!
! 195!	SOLIVE	! 1!	70!	195.0!	5853.8!	0.080!
! 196!	SOLIVE	! 1!	70!	195.0!	5848.0!	0.080!
! 197!	SOLIVE	! 1!	70!	195.0!	4940.2!	0.067!
! 198!	SOLIVE	! 5!	70!	195.0!	2840.0!	0.194!
! 199!	SOLIVE	! 1!	70!	195.0!	1278.0!	0.017!
! 200!	SOLIVE	! 5!	70!	195.0!	398.0!	0.027!
Somme: Groupe: Solivage etage		! 24!	!	!	!	0.883!

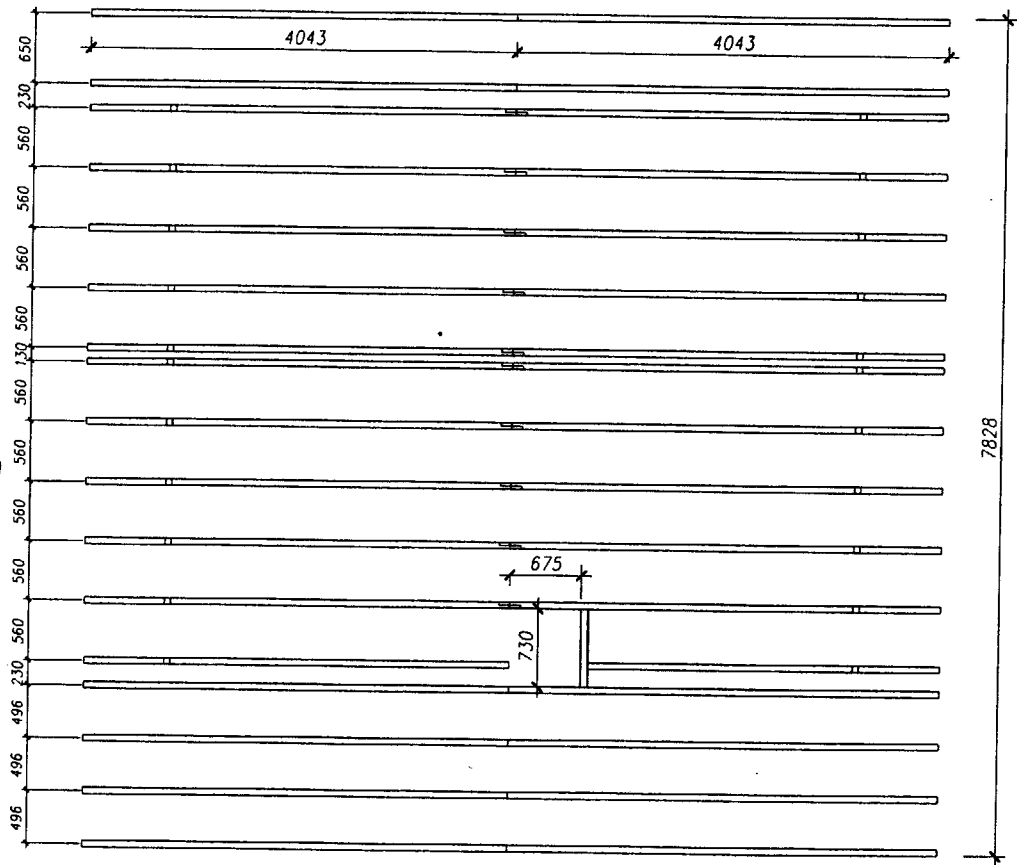
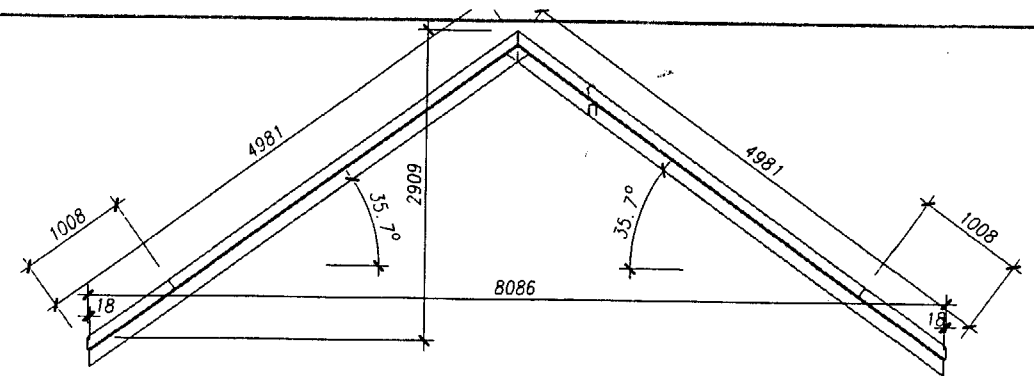
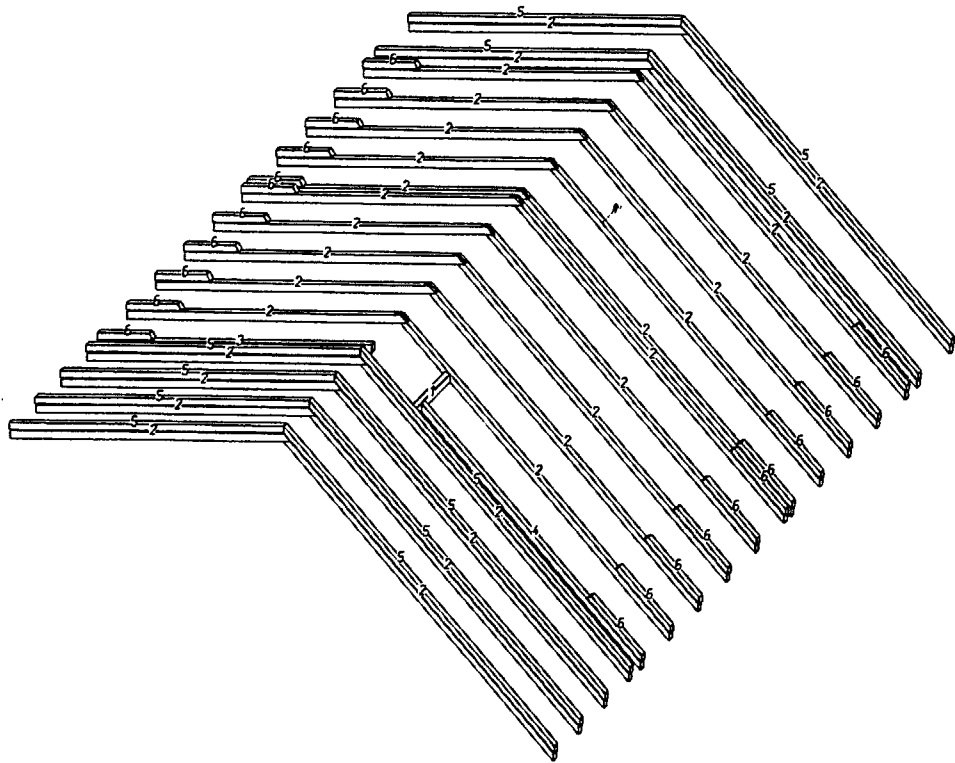


SOLIVAGE ETAGE

Dessin CADWORK par: ..... le: .....	CHALET EDELWEISS	Echelle: 1: 50
Nom de fichier: Solivage.etage.2d	DT 11	
		Format A3

SC55PRP

!No.LP!	Nom	!Nombr!	Larg. rée!	Haut. rée!	Long. rée!	Volume br!
! 1!	CHEVETRE	! 1!	70!	150.0!	730.0!	0.008!
! 2!	CHEVRON	! 32!	60!	120.0!	5085.1!	1.172!
! 3!	CHEVRON	! 1!	60!	120.0!	5044.9!	0.036!
! 4!	CHEVRON	! 1!	60!	120.0!	4127.2!	0.030!
! 5!	CHEVRON DE COMPENSATION	! 12!	60!	100.0!	5052.7!	0.364!
! 6!	CHEVRON DE COMPENSATION	! 22!	60!	100.0!	1007.7!	0.133!
Somme: Groupe: Chevrannage		! 69!	!	!	!	1.742!



CHEVRONNAGE

Dessin CADWORK par: .....	CHALET EDELWEISS	Echelle: 1:50
le: .....		
Nom de fichier: Chevrannage.2d	DT 12	Format A3

SCE5PRP