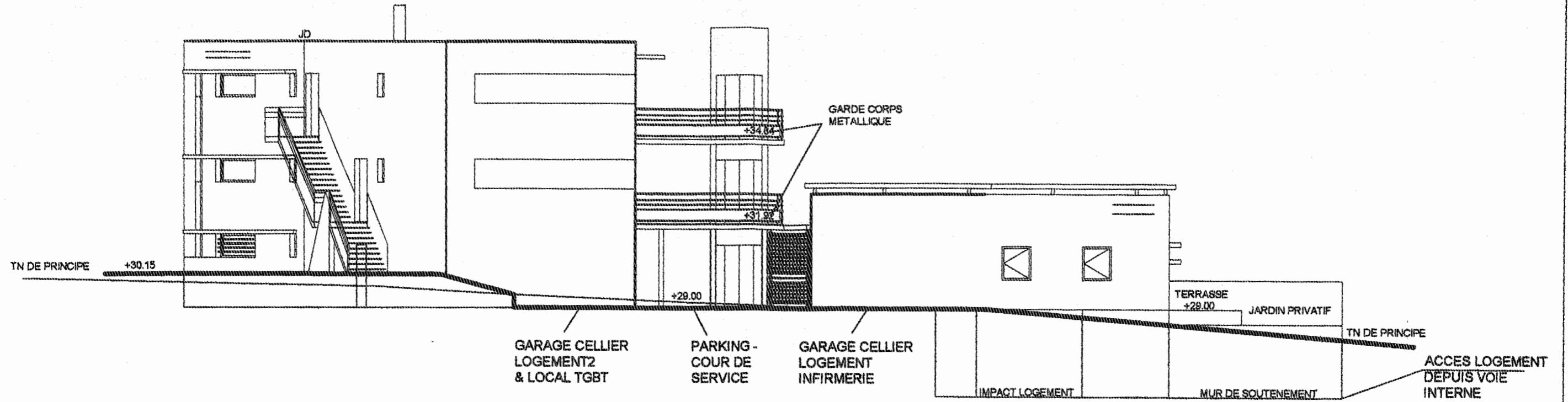
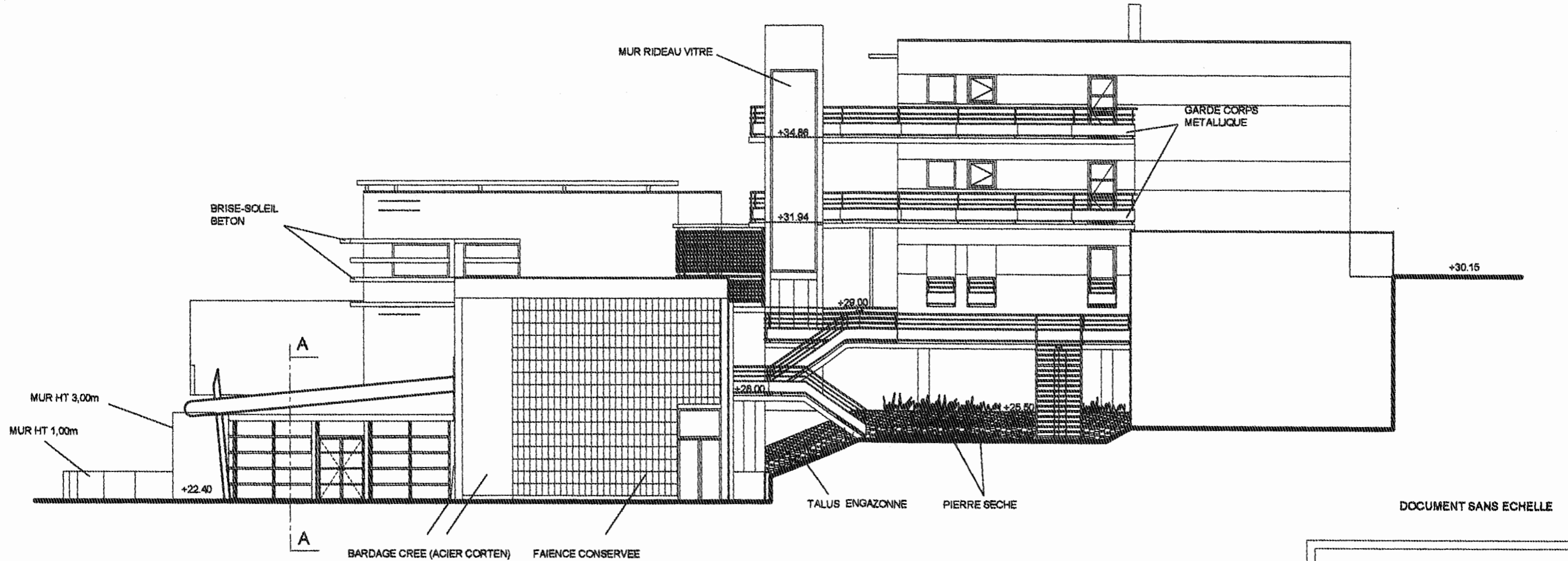


PIGNON SUD OUEST

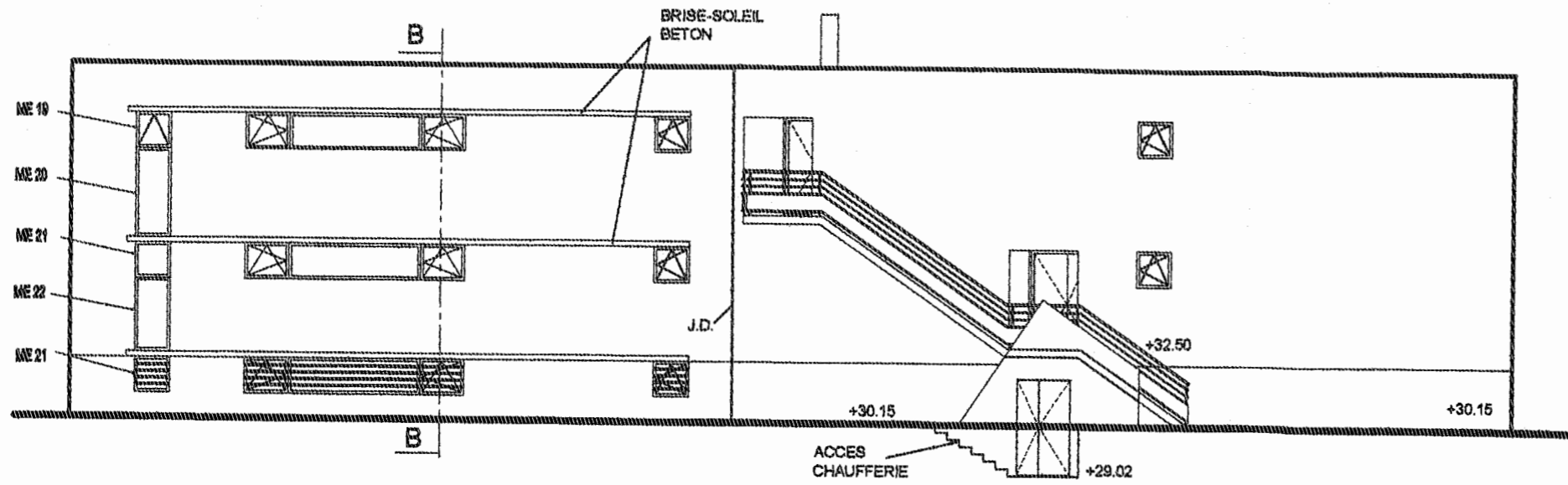


PIGNON NORD EST

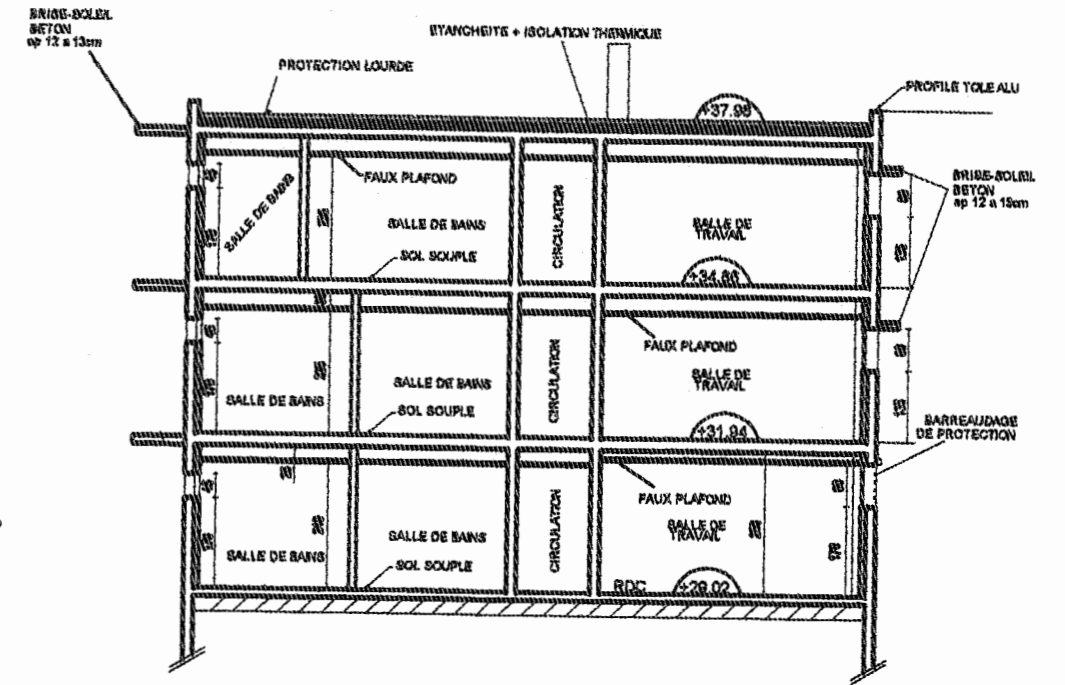


DOCUMENT SANS ECHELLE

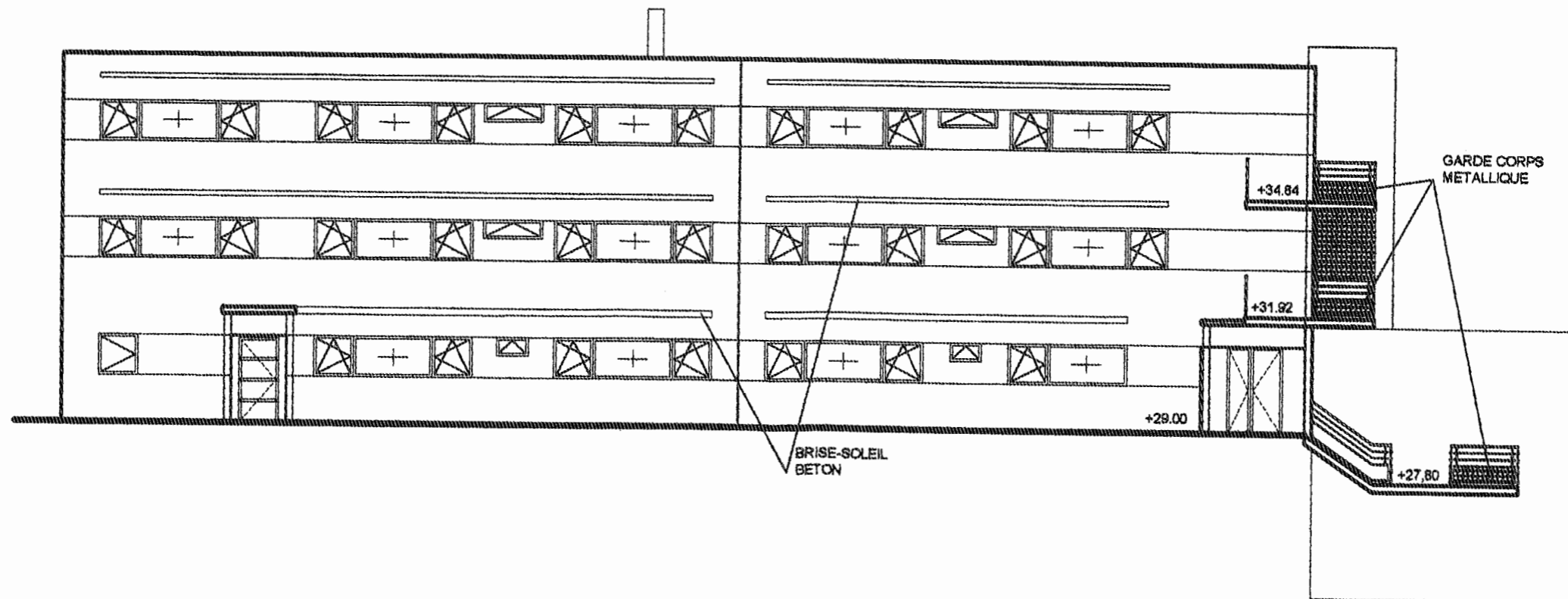
FACADE INTERNAT NORD



COUPE B-B



FACADE PRINCIPALE INTERNAT (SUD)

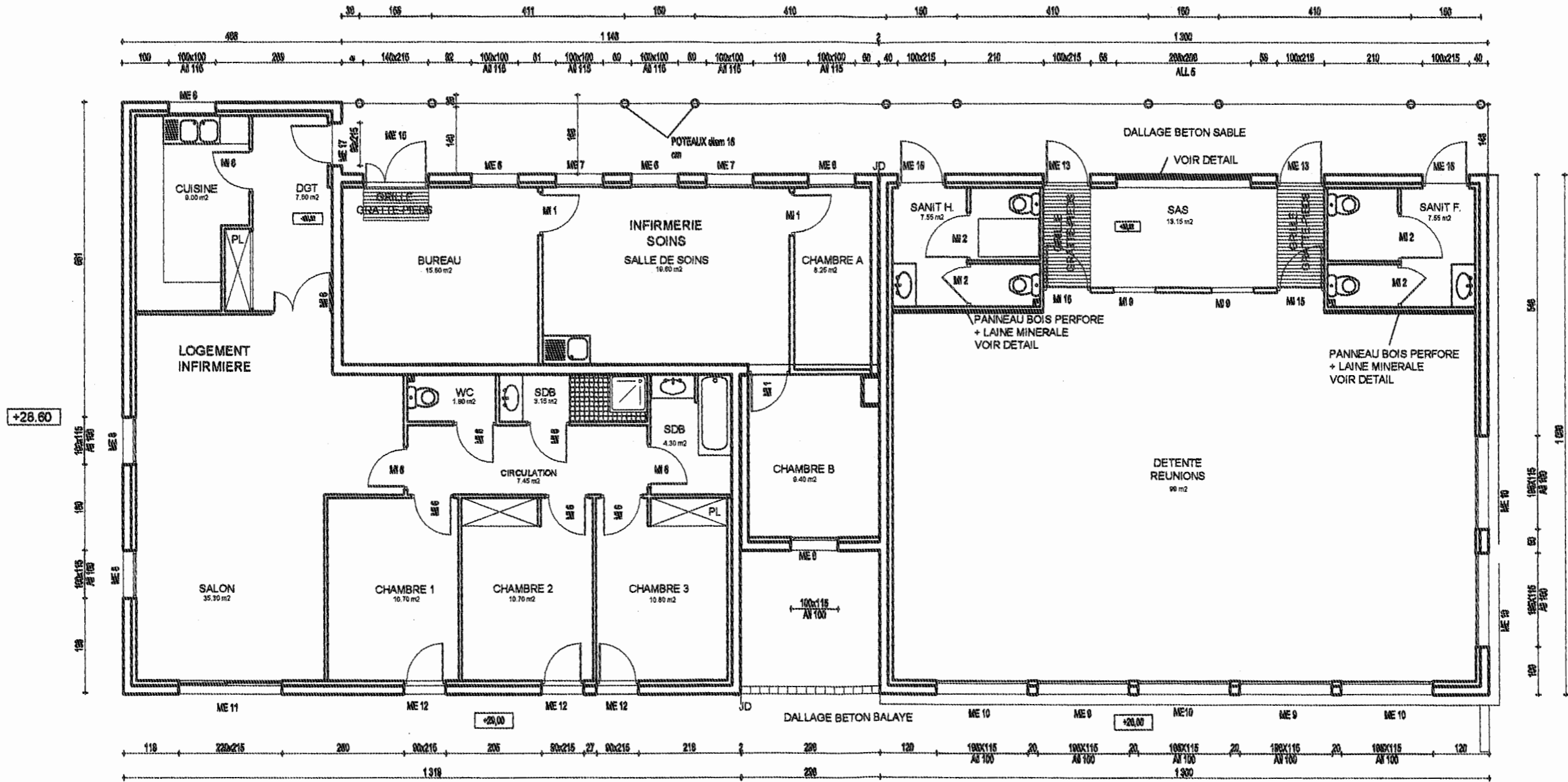


Niveau hall CDI 22.40

DOCUMENT SANS ECHELLE



VUE EN PLAN
Salle de réunion + infirmerie + logement infirmière (RDC)

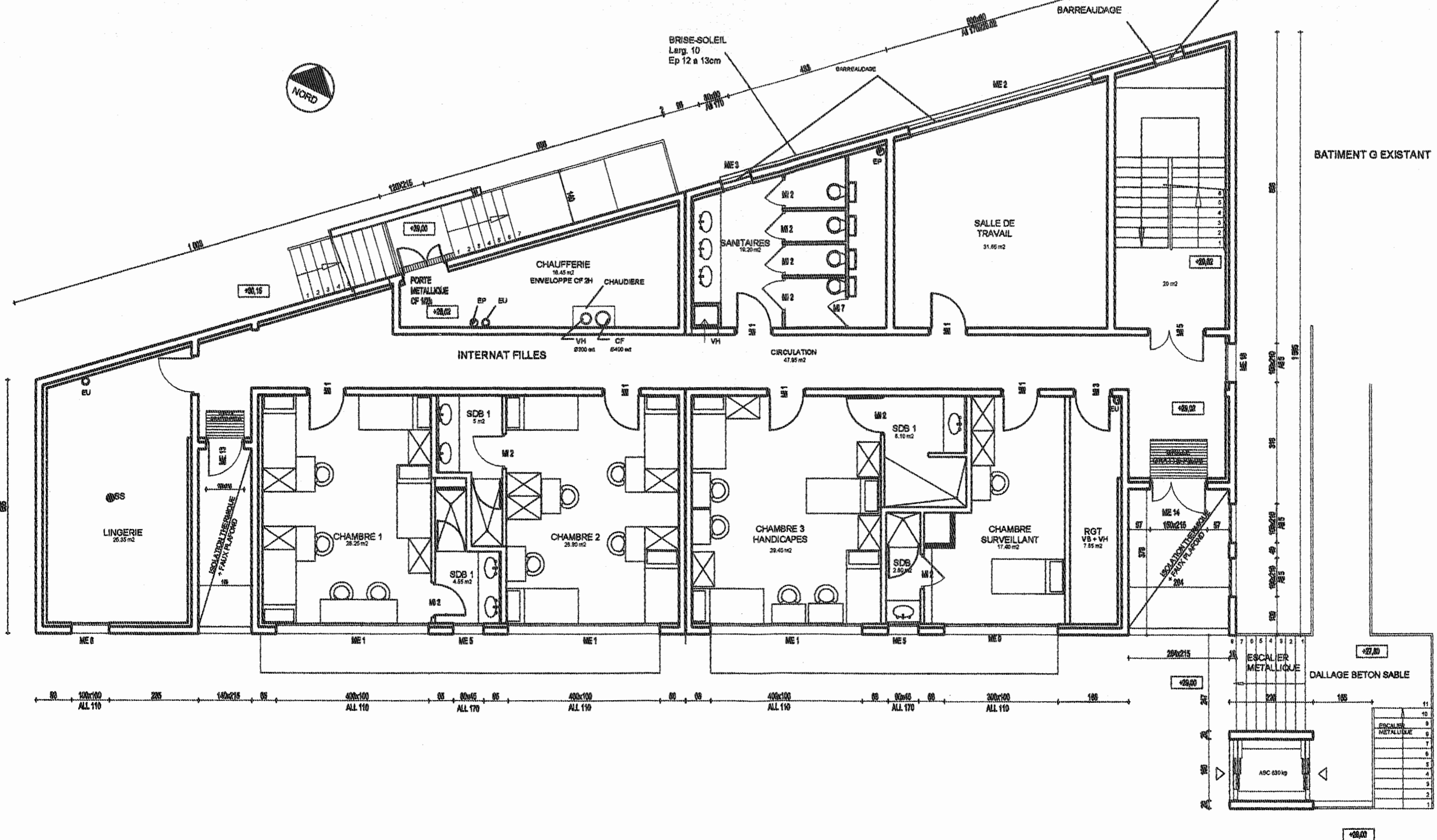


All = hauteur allège

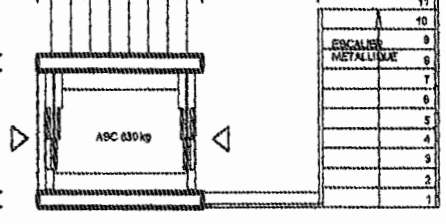
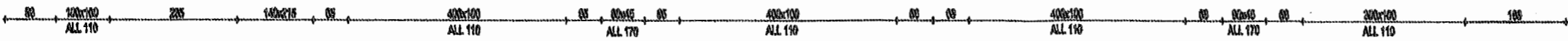
DOCUMENT SANS ECHELLE

VUE EN PLAN INTERNAT
RDC

ME 19
ME 20
ME 21
ME 22



BATIMENT G EXISTANT



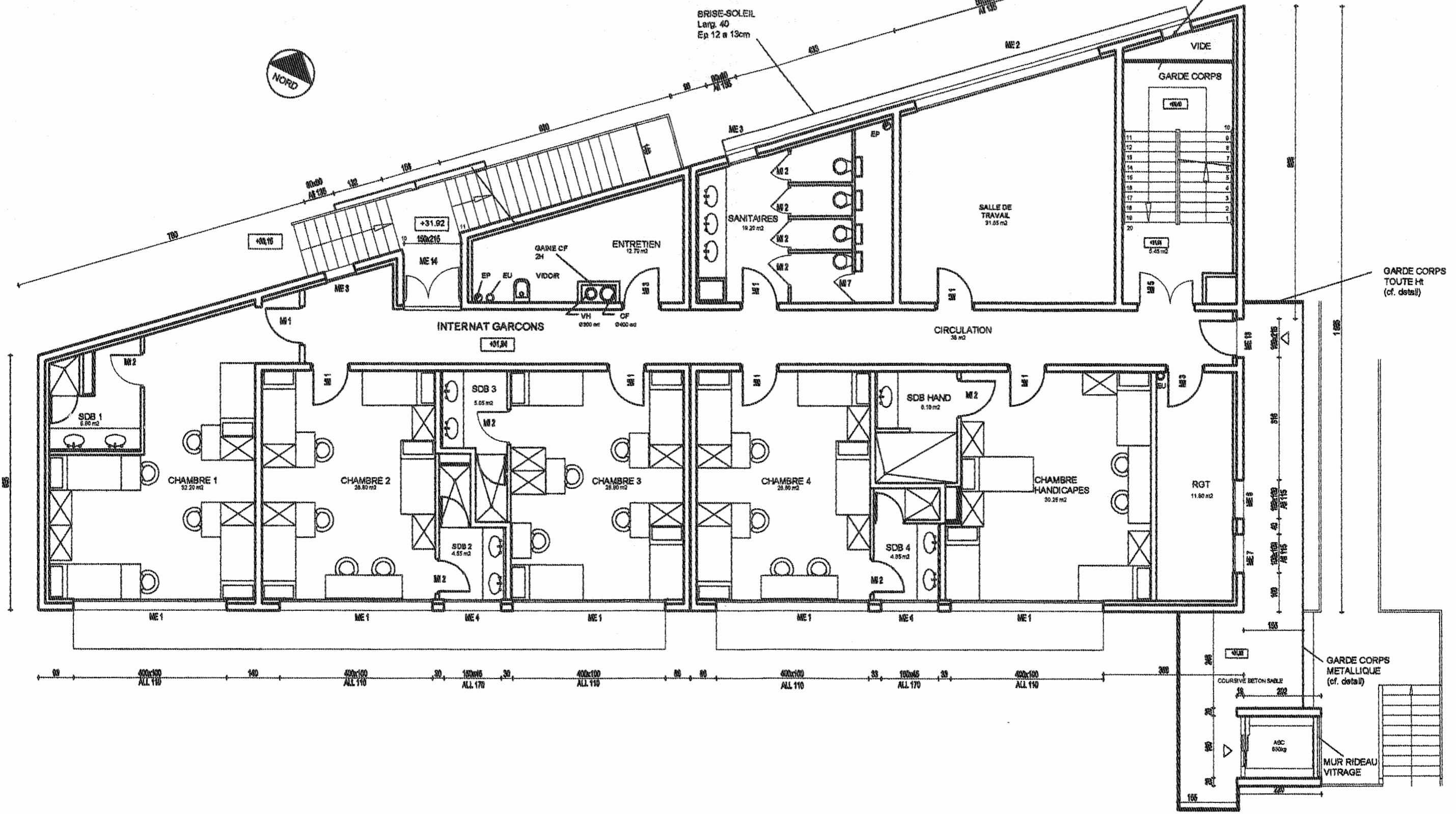
All = hauteur allège
DOCUMENT SANS ECHELLE

VUE EN PLAN INTERNAT
1er étage

ME 19
ME 20
ME 21
ME 22



BRISE-SOLEIL
Larg. 40
Ep 12 à 13cm



All = hauteur allège

DOCUMENT SANS ECHELLE

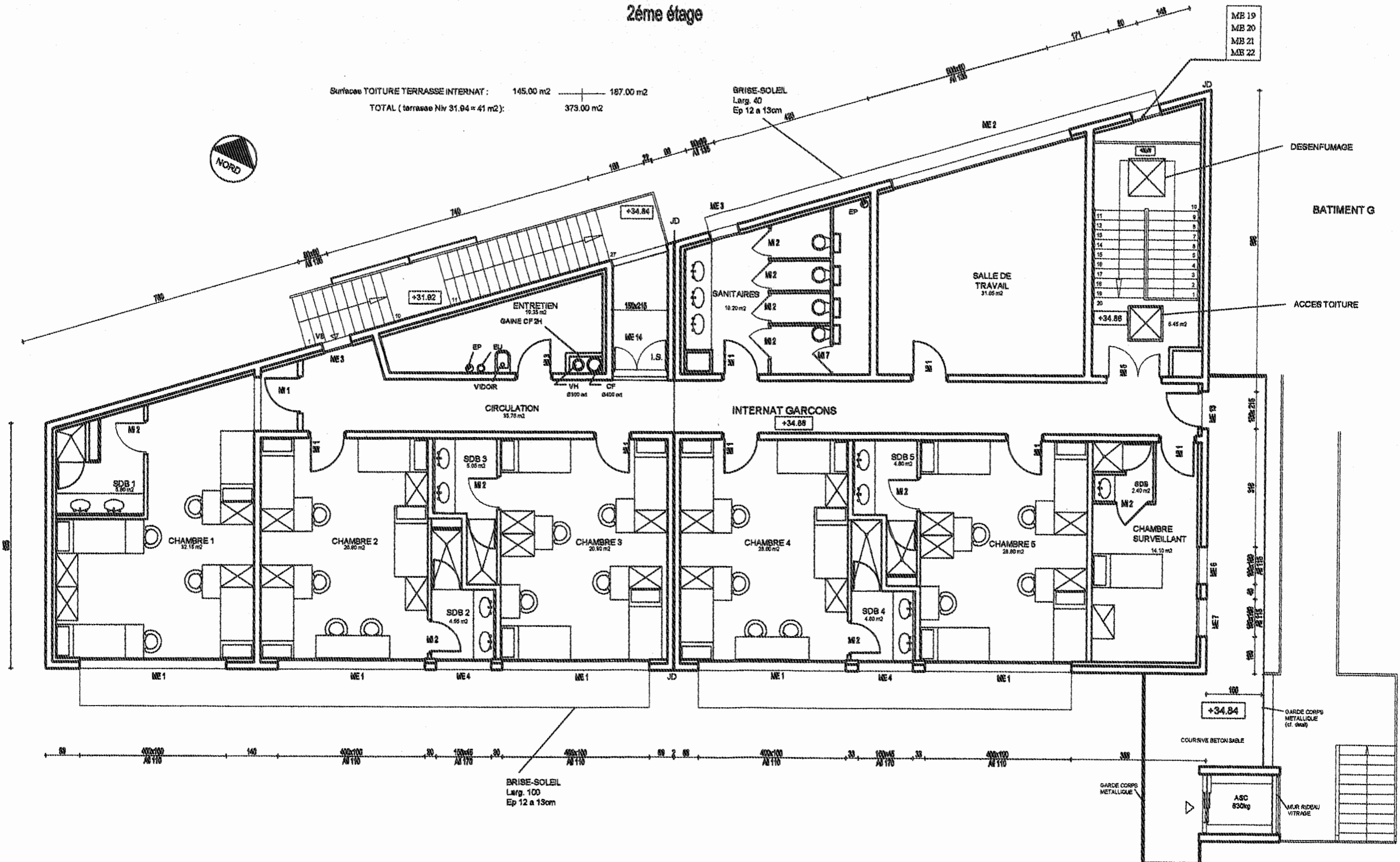
VUE EN PLAN INTERNAT 2ème étage

Surfaces TOITURE TERRASSE INTERNAT : 145.00 m² — 187.00 m²
TOTAL (terrasse Niv 31.04 = 41 m²): 373.00 m²



BRISE-SOLEIL
Larg. 40
Ep 12 à 13cm

ME 19
ME 20
ME 21
ME 22



DESENFUMAGE

BATIMENT G

ACCES TOITURE

INTERNAT GARCONS
+34.88

+34.84
GARDE CORPS METALLIQUE (cf. dvt)

COURSE BETON SABLE

GARDE CORPS METALLIQUE

ASC
630kg

MUR RIDEAU VITRAIE

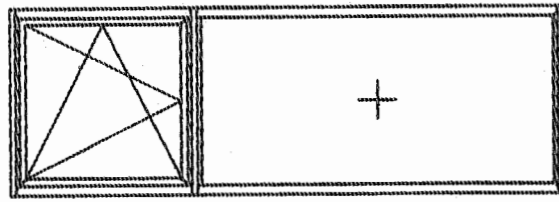
All = hauteur allège

DOCUMENT SANS ECHELLE

Bac professionnel: "Bâtiment: M.A.V.M.S"
DOCUMENT TECHNIQUE: DT: 13 / 14

NOMENCLATURE DES MENUISERIES EXTERIEURES

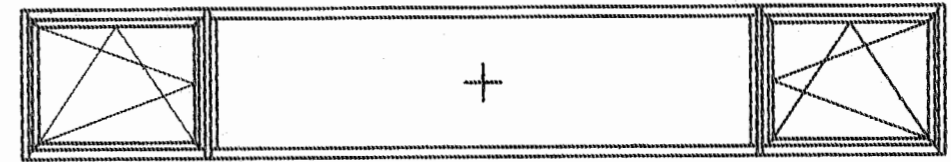
ME 0



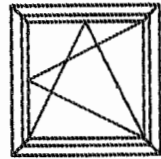
ME 1



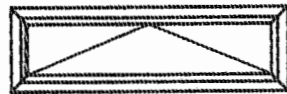
ME 2



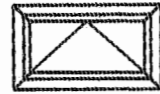
ME 3



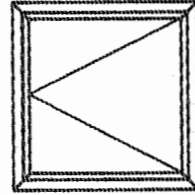
ME 4



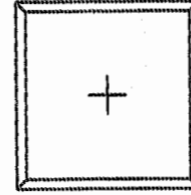
ME 5



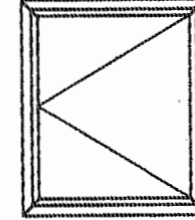
ME 6



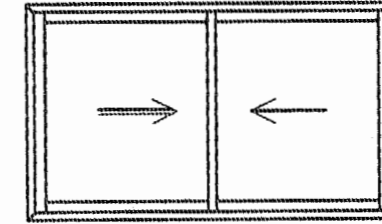
ME 7



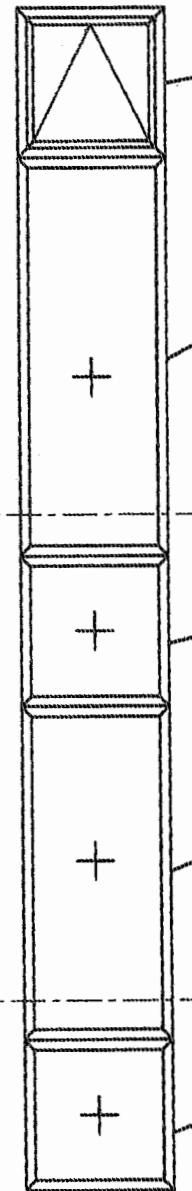
ME 8



ME 9



ME 19
ME 20
ME 21
ME 22



ME 19

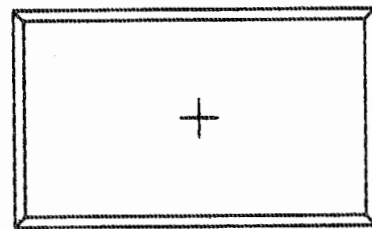
ME 20

ME 21

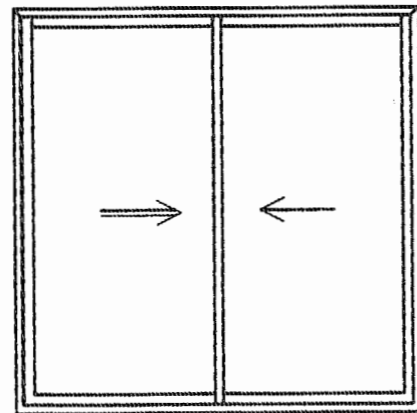
ME 22

ME 21

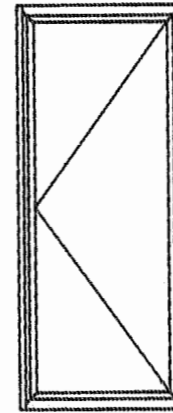
ME 10



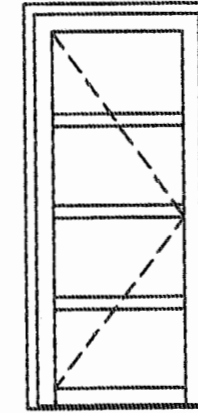
ME 11



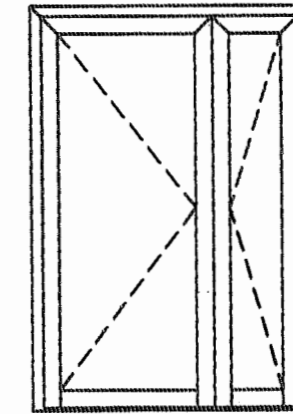
ME 12



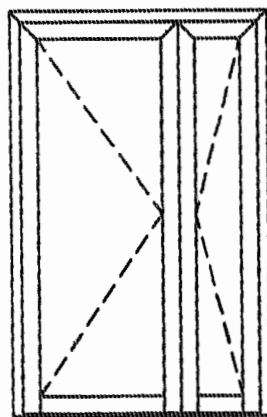
ME 13



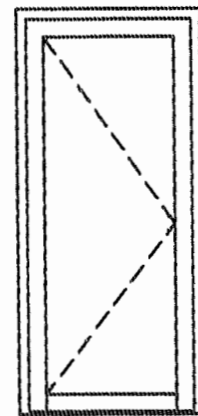
ME 14



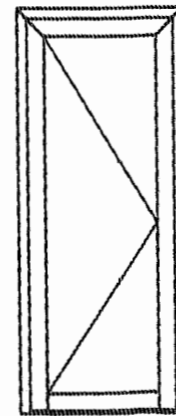
ME 15



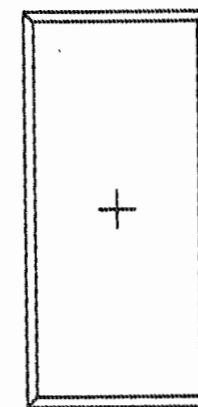
ME 16



ME 17



ME 18



+34.86

+31.94

DOCUMENT SANS ECHELLE