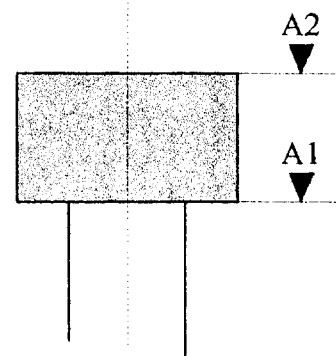
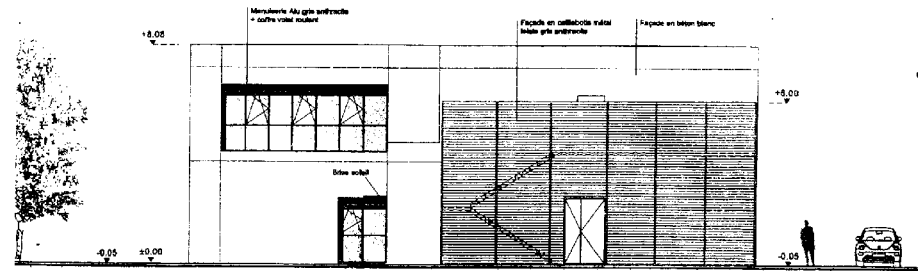


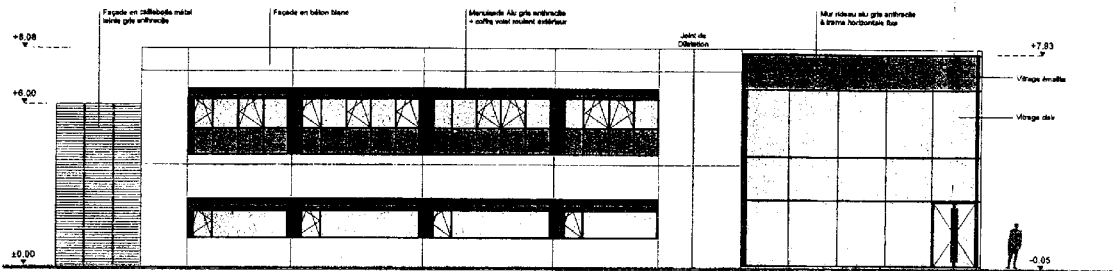
DT 01 : Liste des massifs de fondations

	nbr.	diam.	A1 / A2	dimensions tête de pieu
		[cm]	[m]	[cm] Lxlxh
M01	1	40	-1.02 / -0.52	70 x 70 x 50h
M02	1	40	-1.02 / -0.52	70 x 70 x 50h
M03	1	50	-1.12 / -0.62	322 x 80 x 50h
M04	1	50	-1.12 / -0.62	
M05	1	50	-1.02 / -0.52	80 x 80 x 50h
M06	1	50	-1.02 / -0.52	80 x 80 x 50h
M07	1	50	-1.02 / -0.52	80 x 80 x 50h
M08	1	40	-1.17 / -0.67	234 x 70 x 50h
M09	1	40	-1.17 / -0.67	70 x 70 x 50h
M10	1	40	-1.17 / -0.67	70 x 70 x 50h
M11	1	40	-1.17 / -0.67	70 x 70 x 50h
M12	1	40	-1.02 / -0.52	70 x 70 x 50h
M13	1	50	-1.12 / -0.62	80 x 80 x 50h
M14	1	40	-1.17 / -0.67	70 x 70 x 50h
M15	1	40	-1.17 / -0.67	70 x 70 x 50h
M16	1	40	-1.02 / -0.52	70 x 70 x 50h
M17	1	40	-1.02 / -0.52	70 x 70 x 50h
M18	1	40	-1.12 / -0.62	70 x 70 x 50h
M19	1	40	-1.17 / -0.67	70 x 70 x 50h
M20	1	40	-1.17 / -0.67	70 x 70 x 50h
M21	1	40	-1.17 / -0.67	70 x 70 x 50h
M22	1	40	-1.17 / -0.67	70 x 70 x 50h
M23	1	40	-0.92 / -0.42	70 x 70 x 50h
M24	1	40	-2.10 / -1.60	260 x 260 x 50h
M25	1	40	-2.10 / -1.60	
M26	1	40	-2.10 / -1.60	
M27	1	40	-2.10 / -1.60	
M28	1	50	-1.17 / -0.67	80 x 80 x 50h
M29	1	40	-1.02 / -0.52	70 x 70 x 50h
M29A	1	40	-1.02 / -0.53	70 x 70 x 50h
M30	1	60	-1.17 / -0.67	90 x 90 x 50h
M31	1	60	-1.12 / -0.62	90 x 90 x 50h
M32	1	60	-1.12 / -0.62	90 x 90 x 50h
M33	1	60	-1.12 / -0.62	90 x 90 x 50h
M34	1	50	-1.17 / -0.67	80 x 80 x 50h
M35	1	40	-0.97 / -0.47	70 x 70 x 50h
M36	1	40	-0.97 / -0.47	70 x 70 x 50h
M37	1	50	-1.17 / -0.67	80 x 80 x 50h
M38	1	40	-1.02 / -0.52	70 x 70 x 50h
M39	1	50	-1.02 / -0.52	80 x 80 x 50h
M40	1	50	-1.17 / -0.67	80 x 80 x 50h
M41	1	40	-1.17 / -0.67	341 x 70 x 50h
M42	1	40	-1.17 / -0.67	
M43	1	50	-1.17 / -0.67	80 x 80 x 50h
M44	1	40	à définir	70 x 70 x 50h
M45	1	40	à définir	70 x 70 x 50h
M46	1	40	à définir	70 x 70 x 50h
M47	1	40	à définir	70 x 70 x 50h

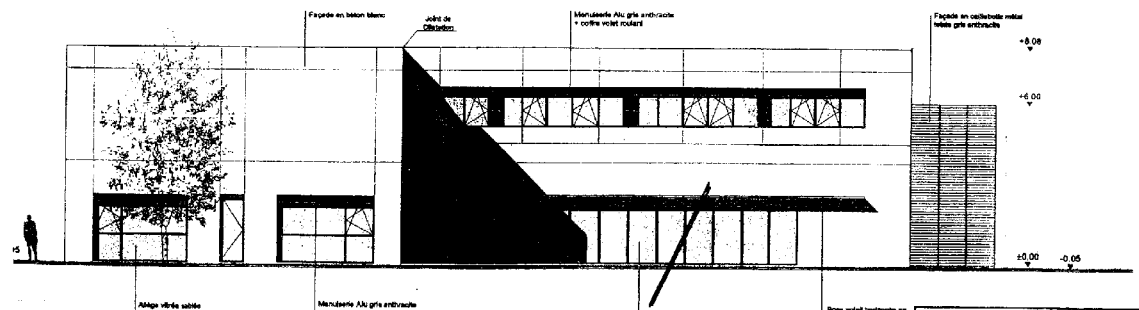




Façade nord-est

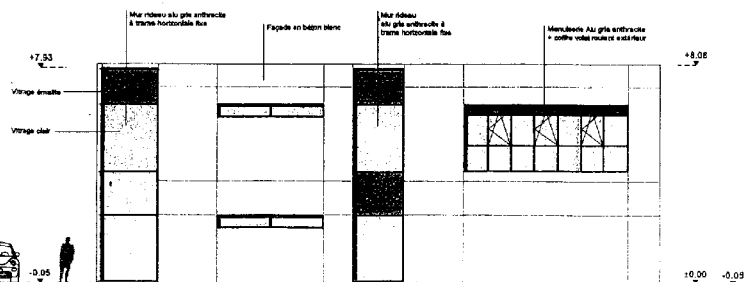


Façade nord-ouest



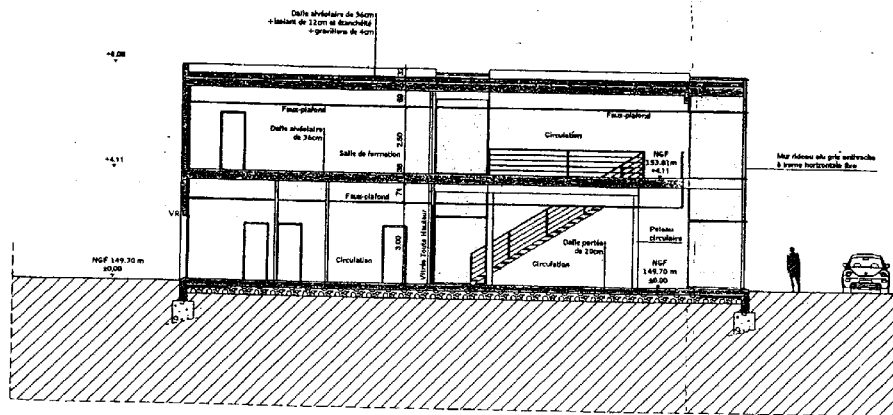
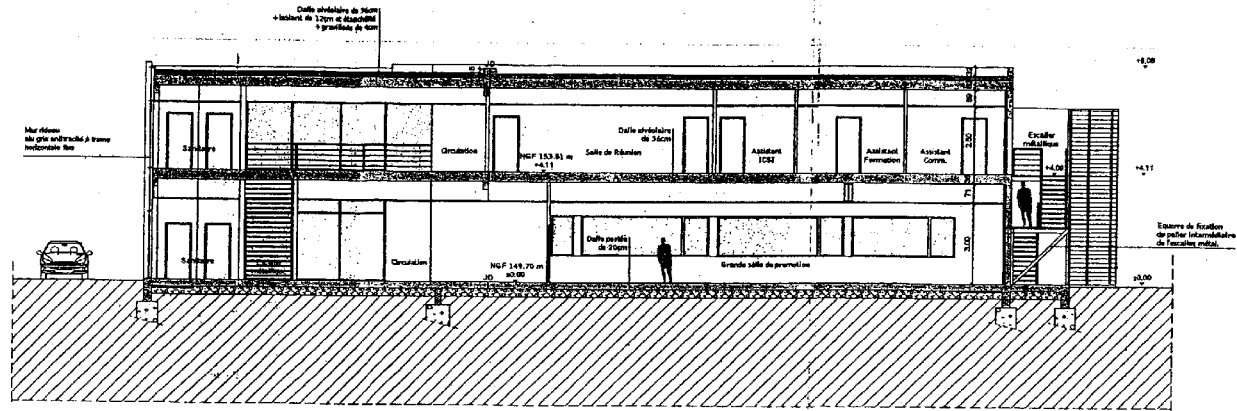
Façade sud-est

Localisation Question Q223

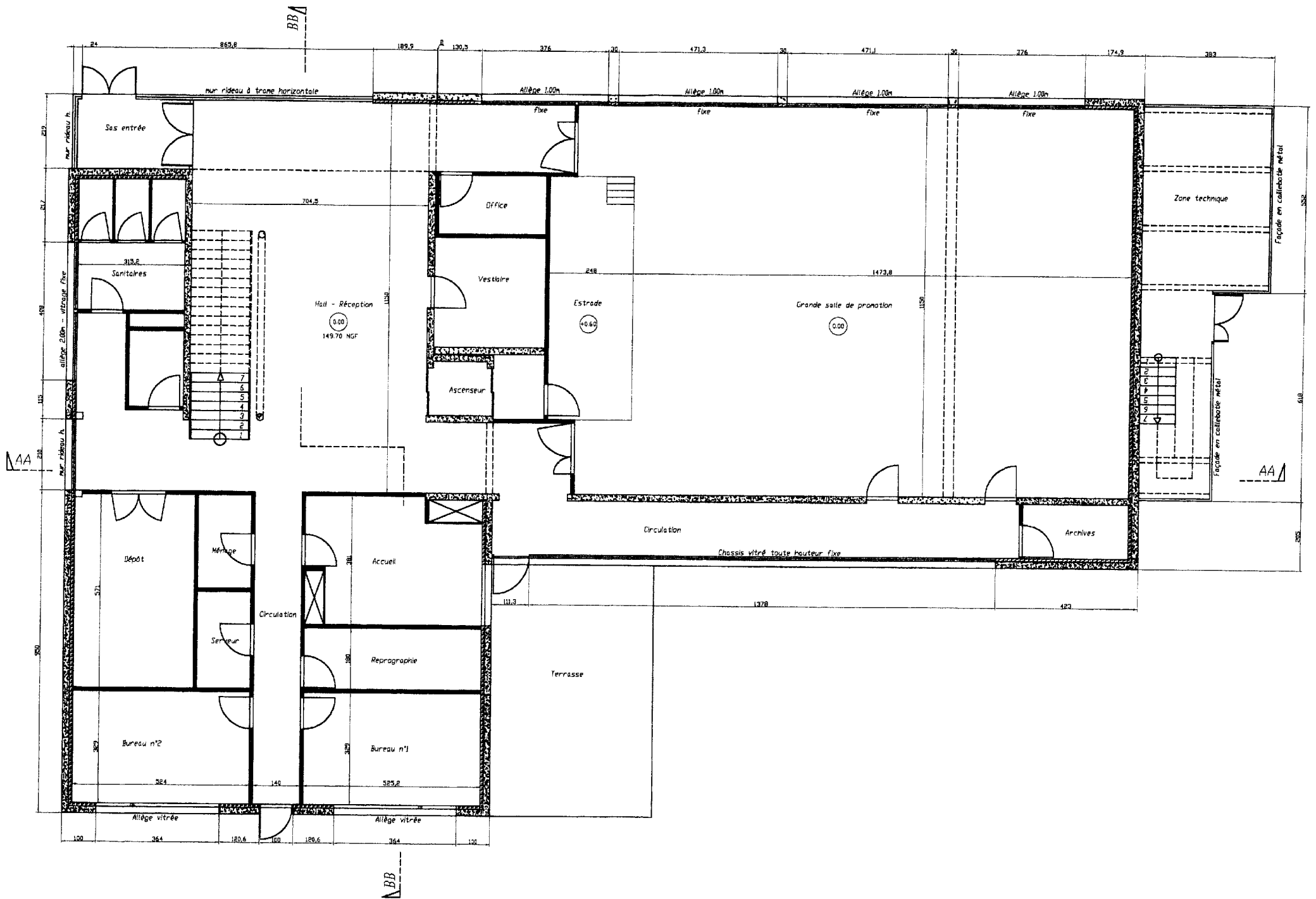


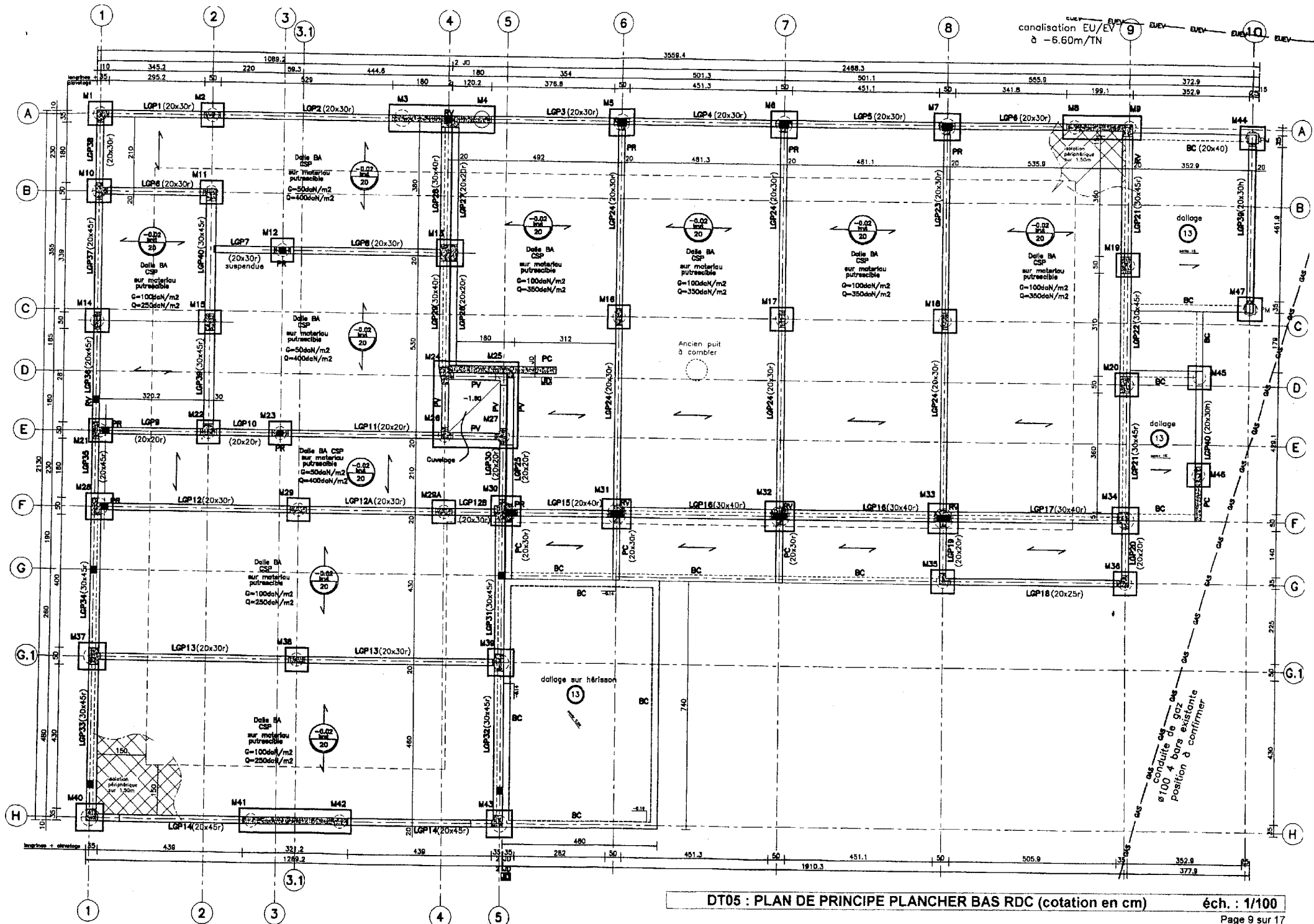
Façade sud-ouest

Coupe AA

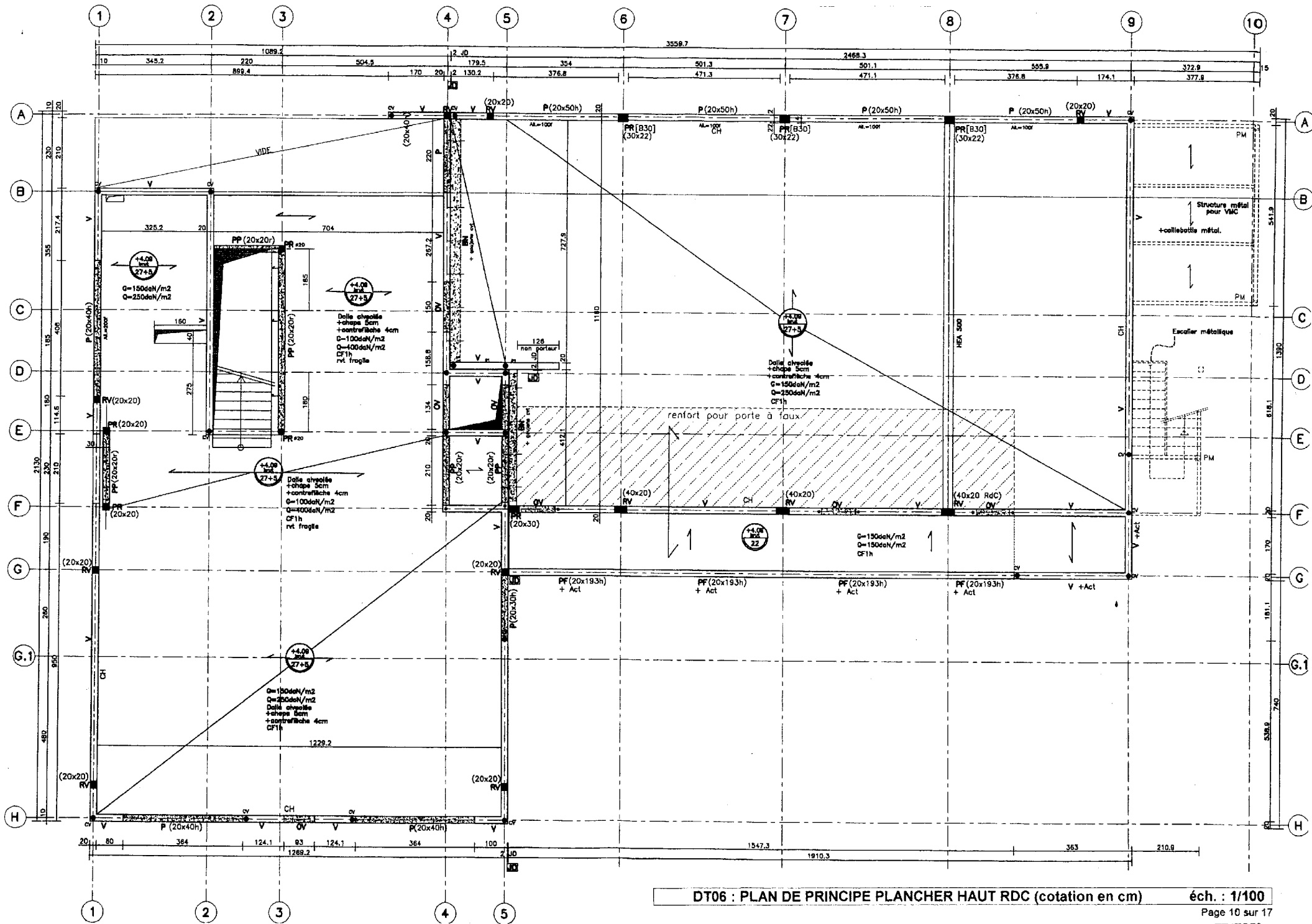


Coupe BB

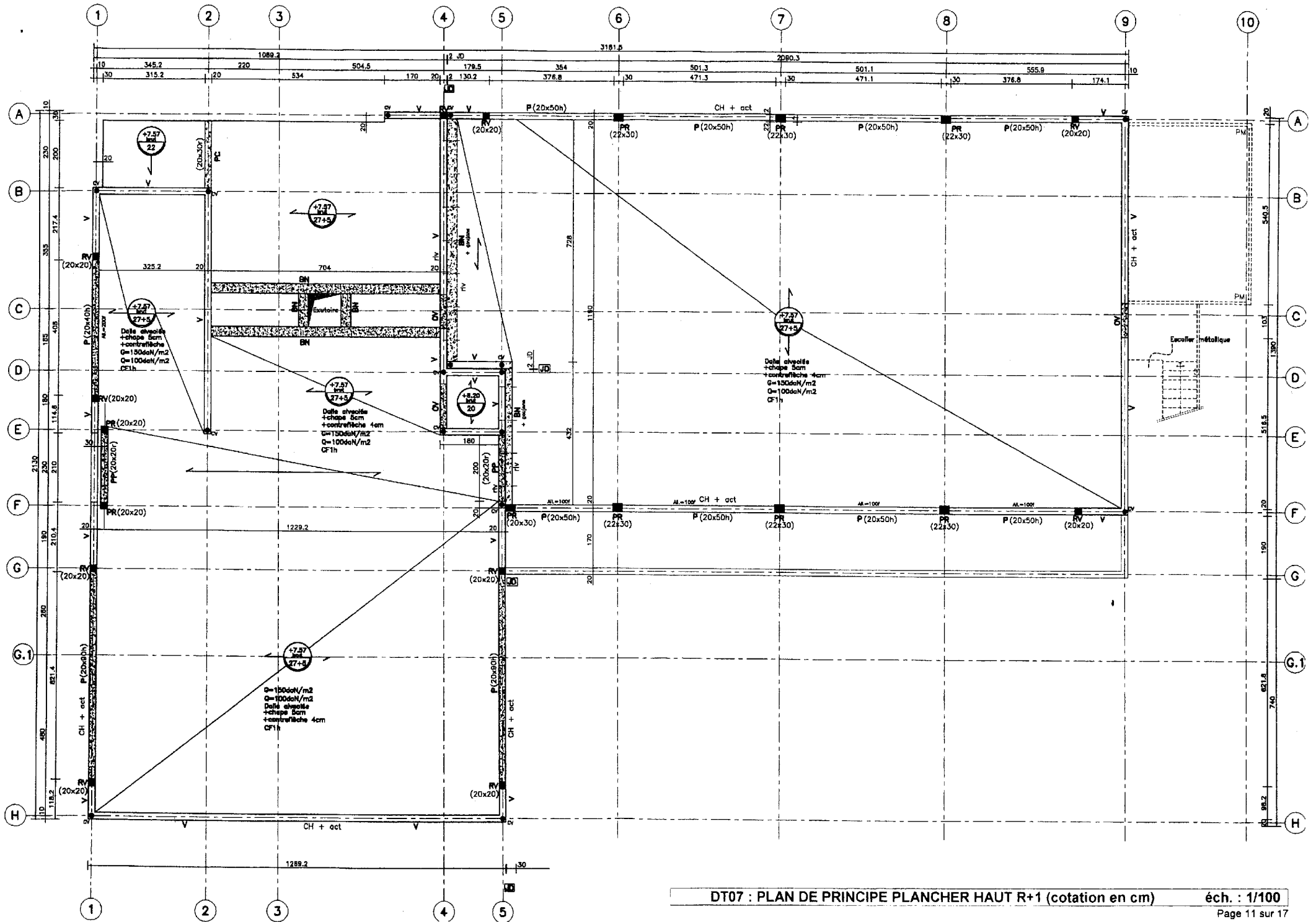




DT05 : PLAN DE PRINCIPLE PLANCHER BAS RDC (cotation en cm) éch. : 1/100

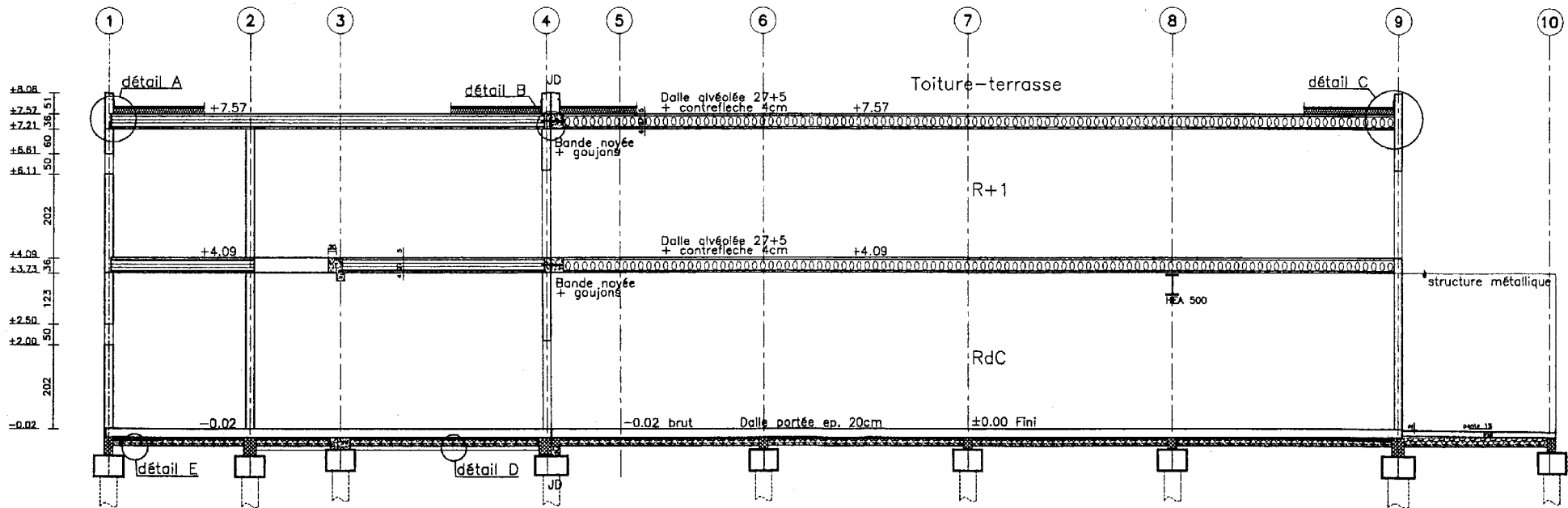
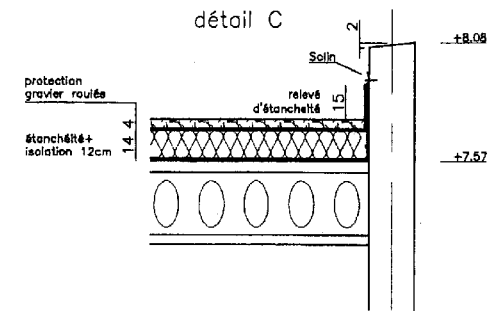
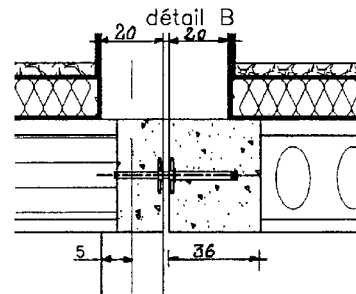
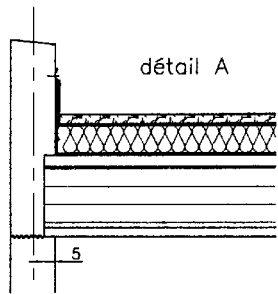


DT06 : PLAN DE PRINCIPE PLANCHER HAUT RDC (cotation en cm) éch. : 1/100



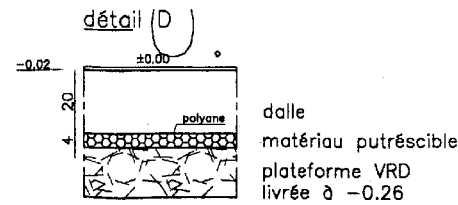
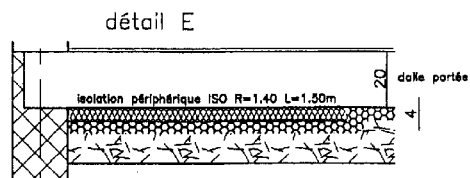
DT07 : PLAN DE PRINCIPLE PLANCHER HAUT R+1 (cotation en cm)

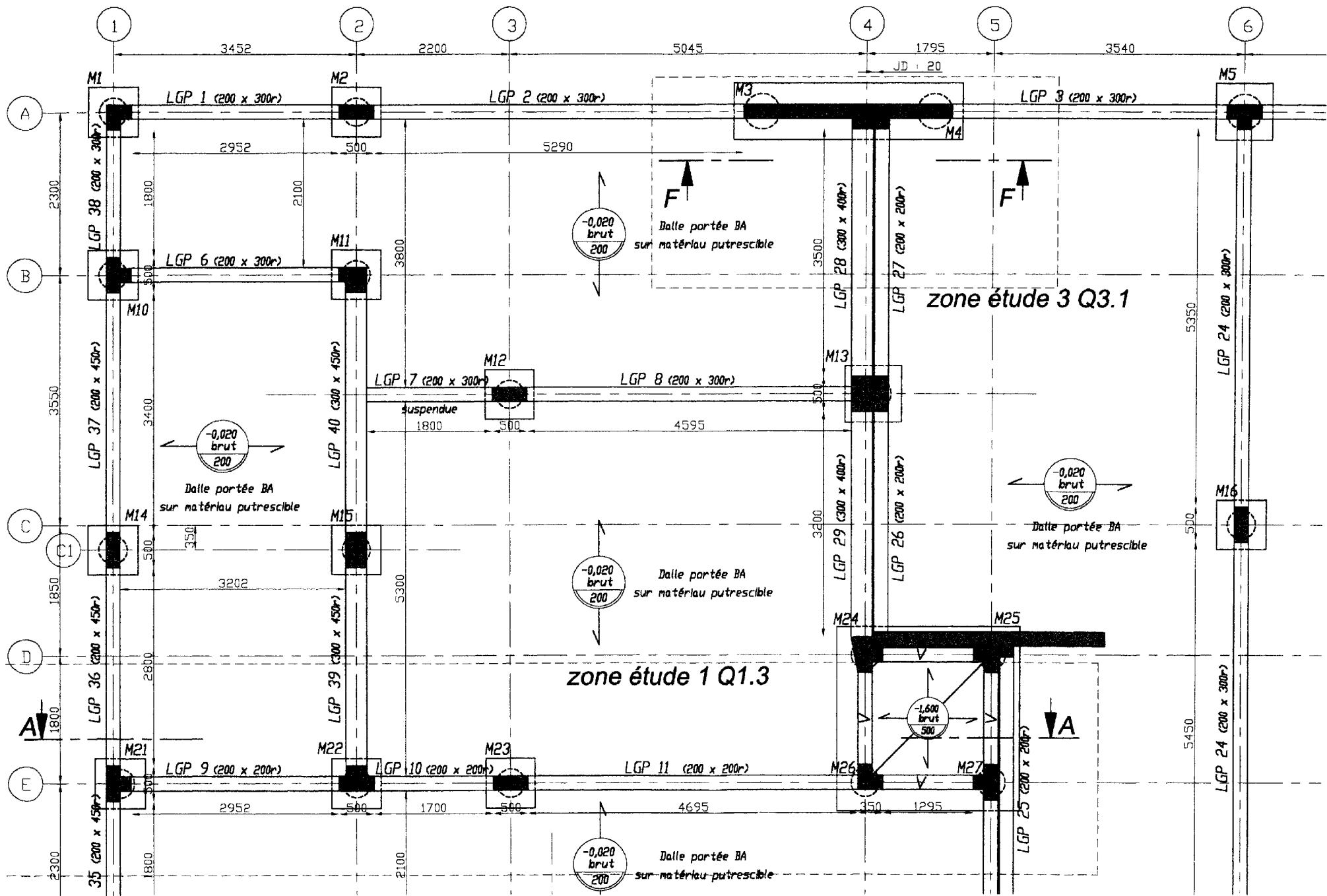
éch. : 1/100



150 mini R=1.40
Isolation périphérique

150 mini R=1.40
Isolation périphérique





Légende :

NB : les cotes manquantes seront directement mesurées sur le plan.

■ : zone de clavetage

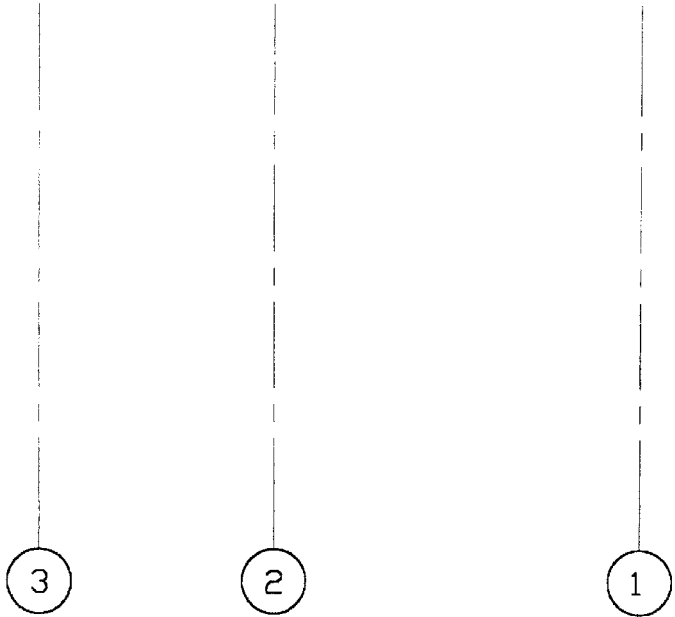
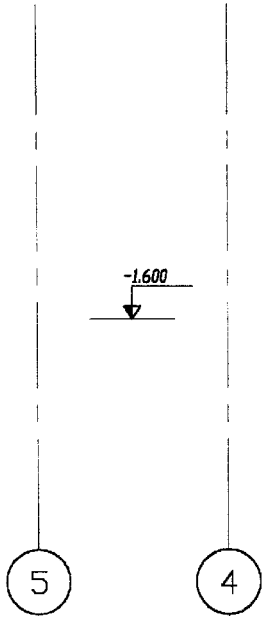
LGP : Longrines préfabriquées

"r" : retombée

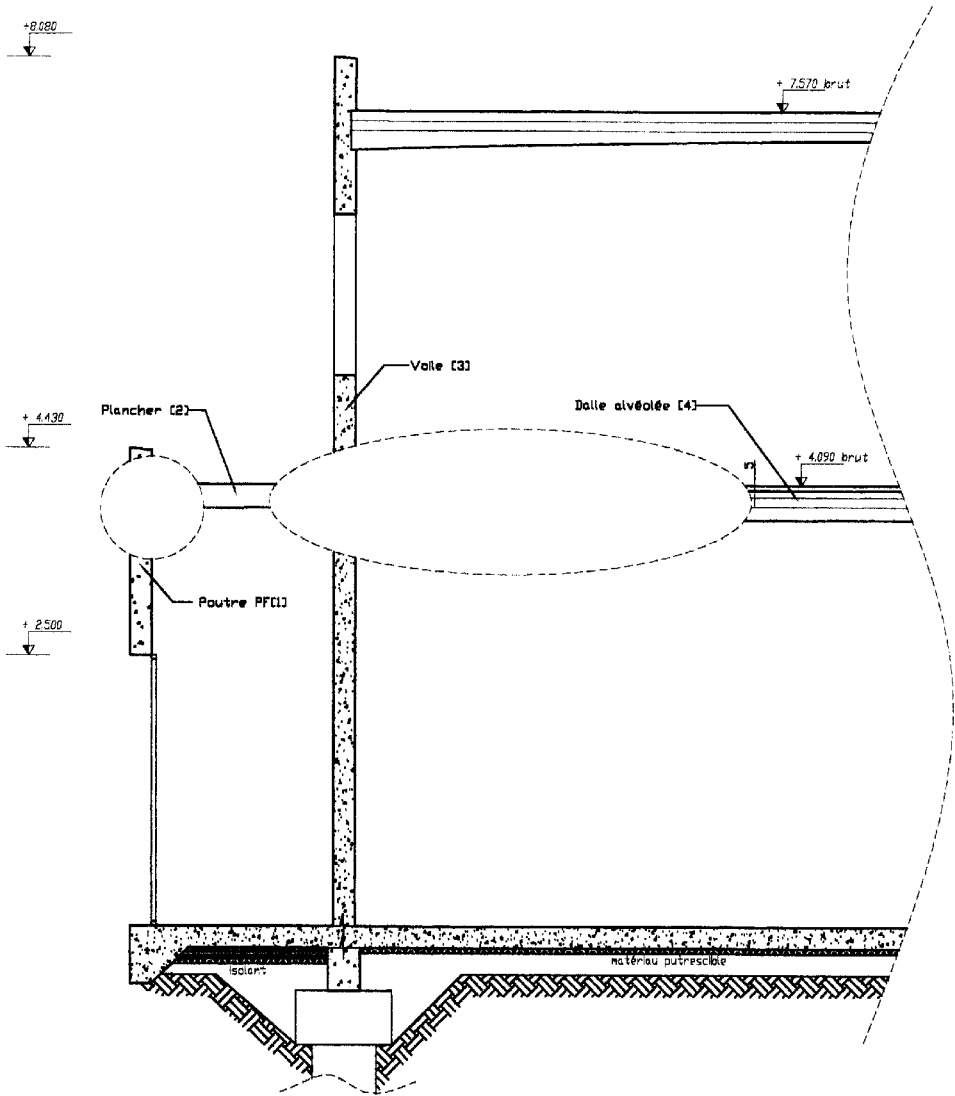
Phases	Description	Schéma	Observation
① Mise en fiche Forage			
② Forage Ancrage			
③ Injection béton Remontée outil			
④ Armatures			
⑤ Recépage			

DR02a : TABLEAU DE RESULTATS CAPACITE PORTANTE PIEUX

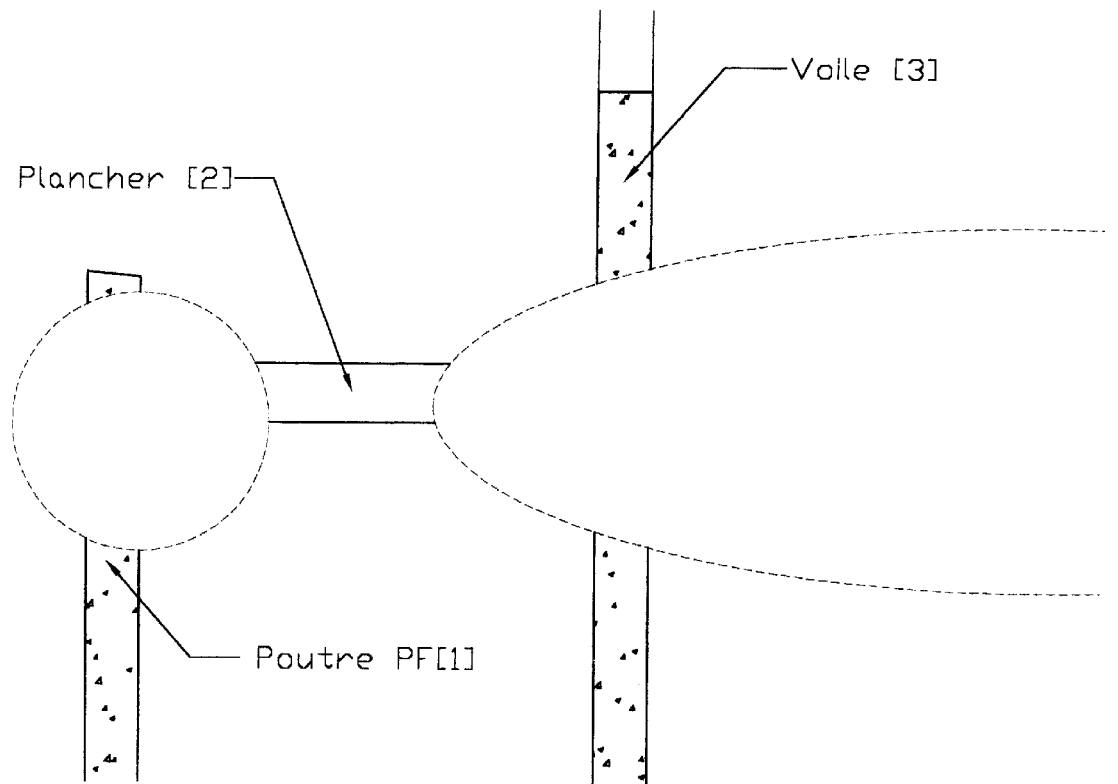
diamètre (en mm)	400	500	600
terme de frottement latéral (en kN) : $\frac{Q_s}{2}$
terme de pointe (en kN) : $\frac{Q_p}{3}$	301	471	678
capacité portante (en kN) : Q



DR02b : COUPE DE PRINCIPE SUR FONDATIONS FILE E échelle : 1/50

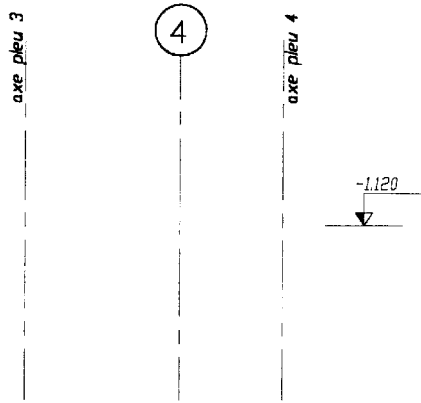


COUPE TRANSVERSALE SUR TERRASSE : PRINCIPE (éch. : 1/50)

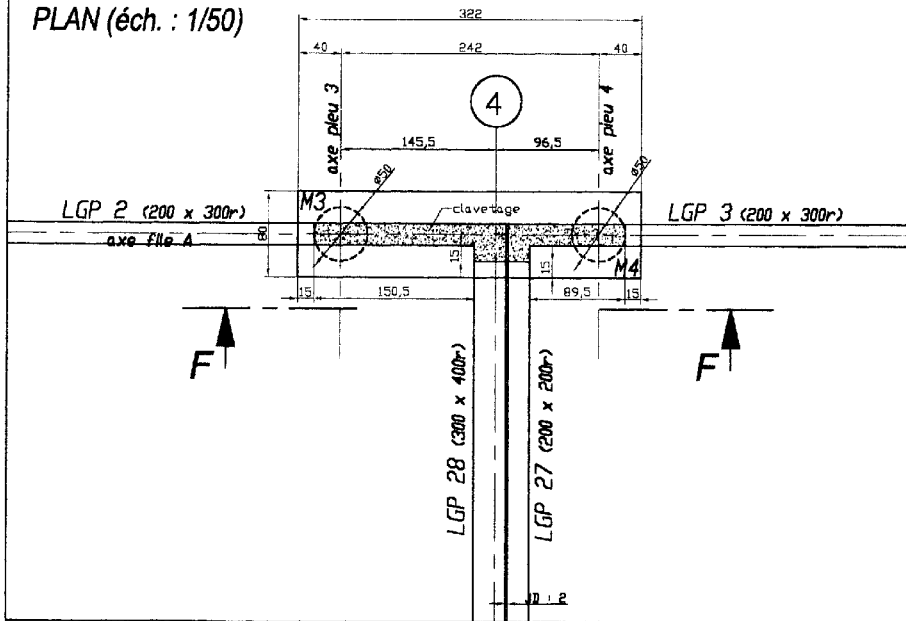


DETAIL ARMATURES DE LIAISON (éch. 1/20)

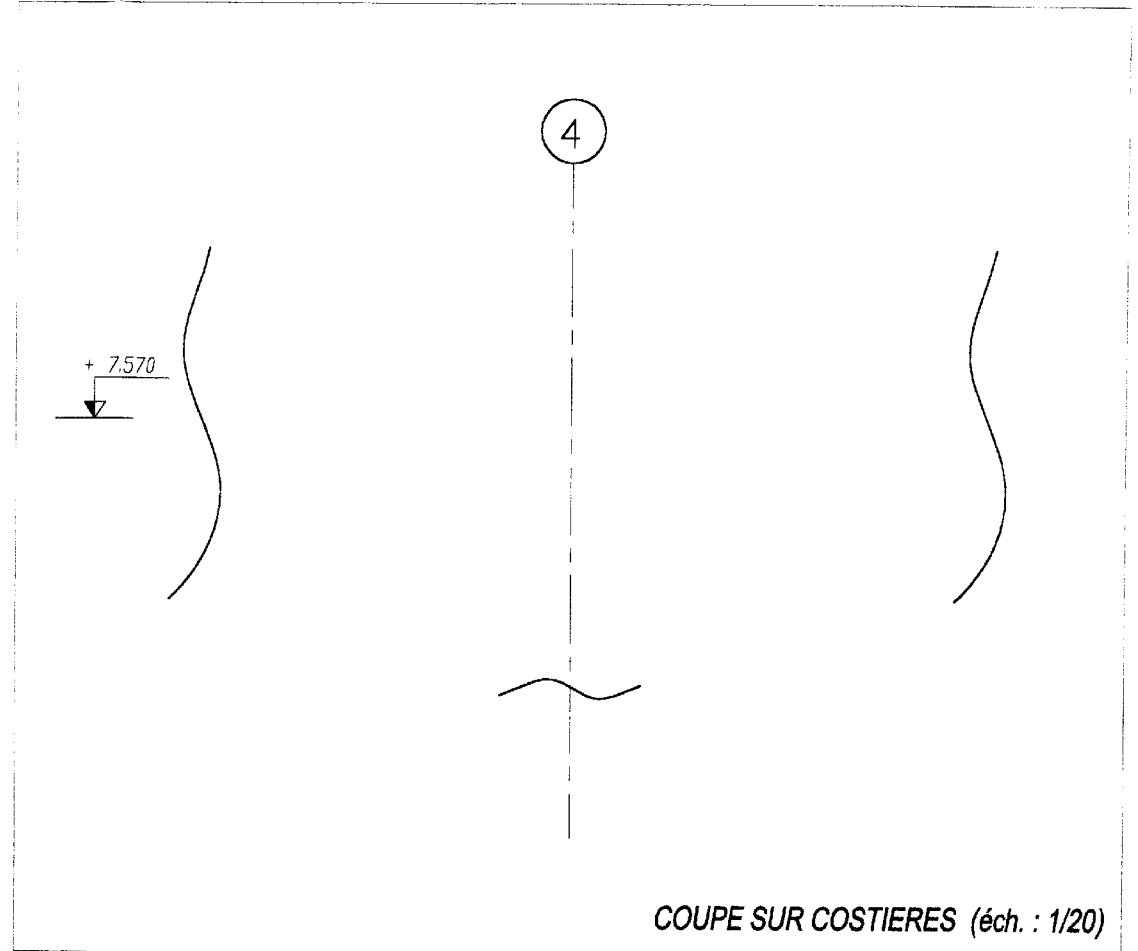
COUPE FF (éch. : 1/50)



PLAN (éch. : 1/50)



DETAIL FONDATIONS



COUPE SUR COSTIERES (éch. : 1/20)

DETAIL TOITURE TERRASSE