

BREVET DE TECHNICIEN SUPERIEUR
ETUDES ET ECONOMIE DE LA CONSTRUCTION

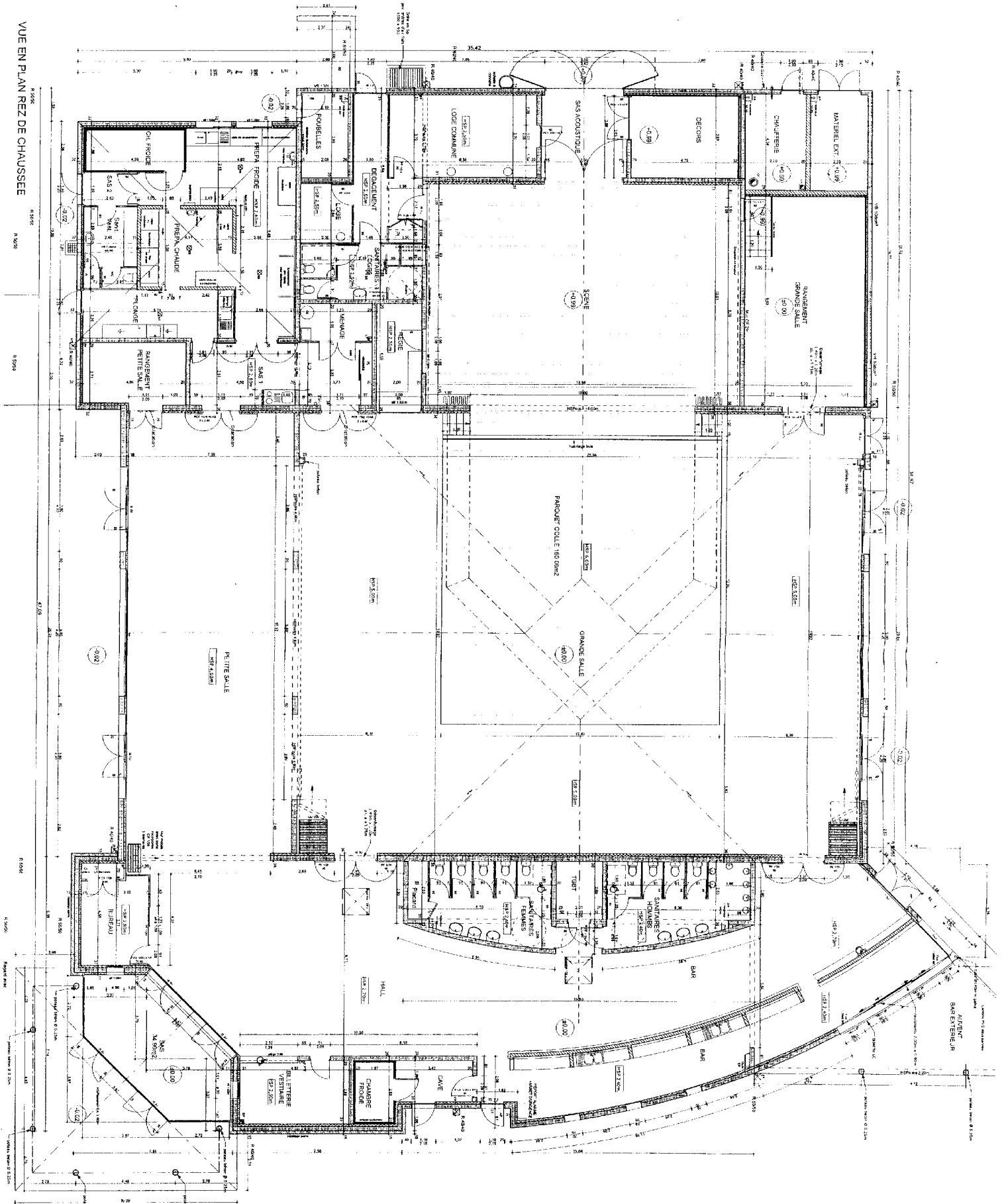
SESSION 2008

EPREUVE E5
ETUDES DES CONSTRUCTIONS

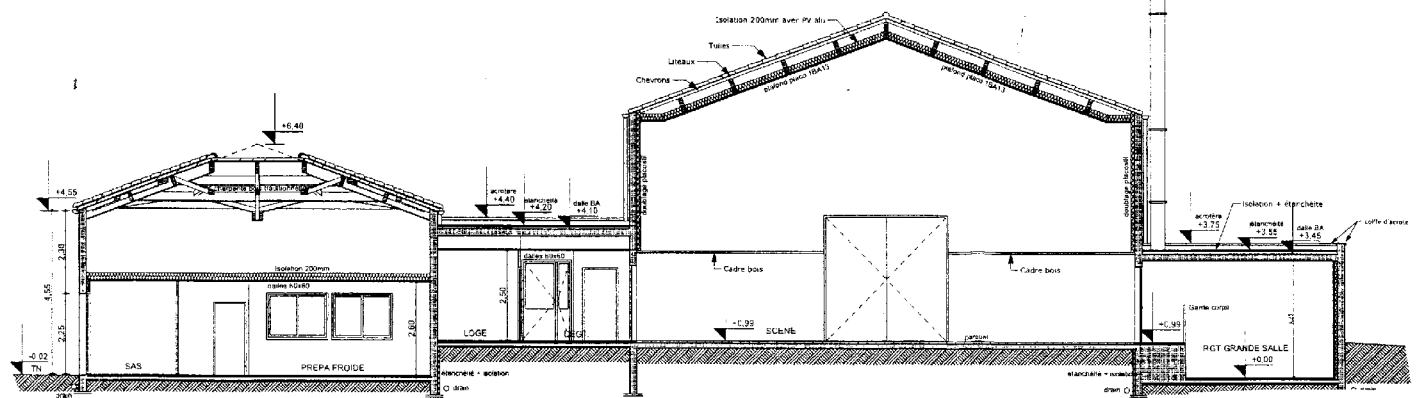
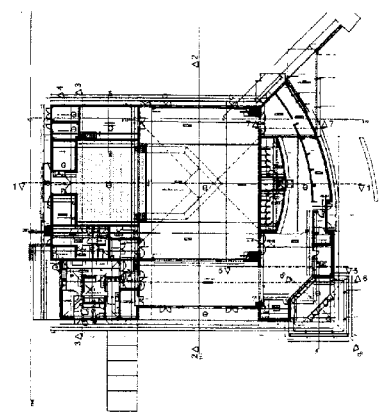
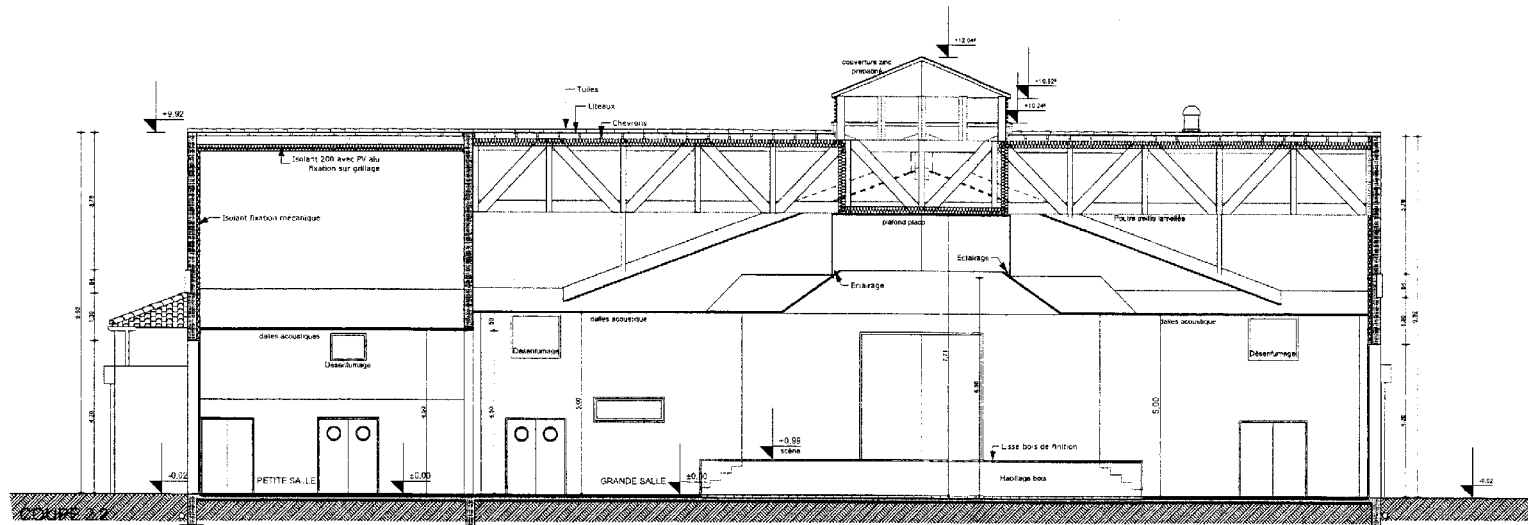
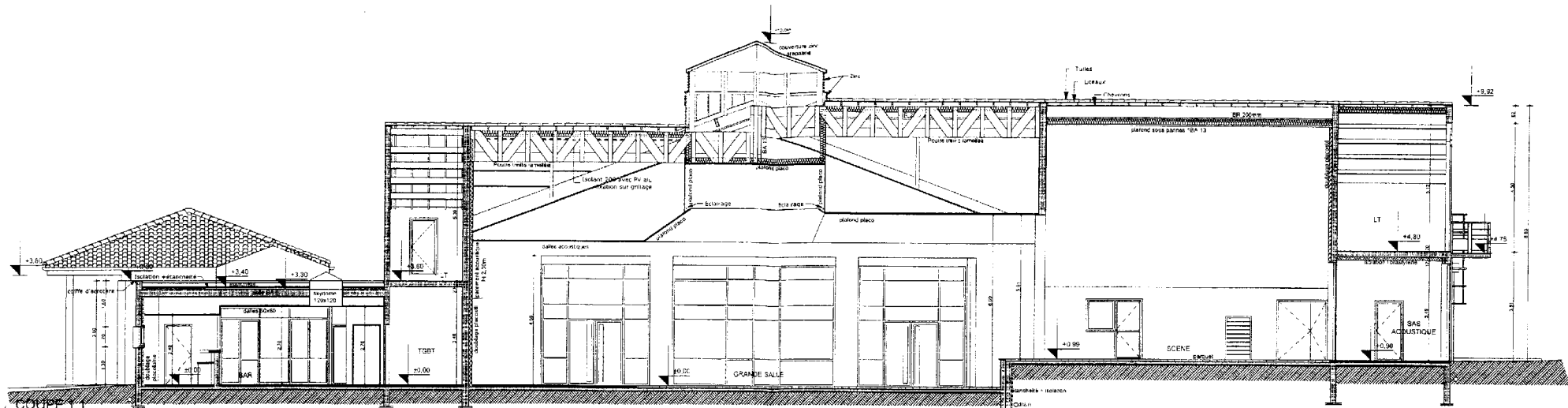
Sous-épreuve U5.1
ETUDES TECHNIQUES

DOSSIER PLANS

- 01- Vue en plan RDC*
- 02- Coupes 1.1, 2.2, 3.3,*
- 03- Plan de situation, Plan masse, Façades,*
- 04- Plan de principe de la charpente,*
- 05- Plans détails (extraits de la zone étudiée partie C).*

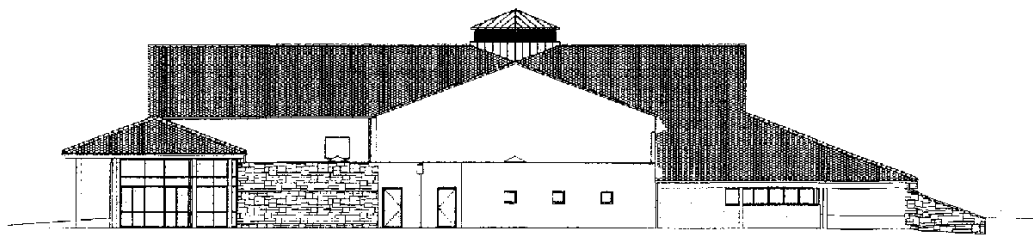


01-Vue en plan RDC

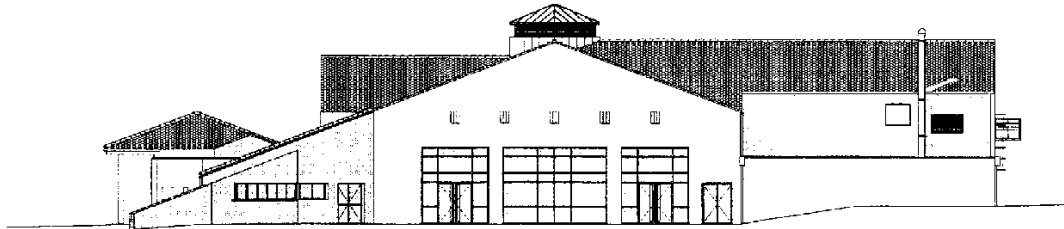


02- Coupes 1.1, 2.2, 3.3

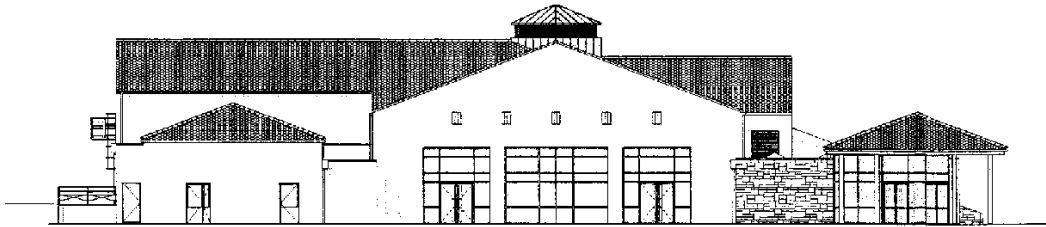
COUPE 3.3



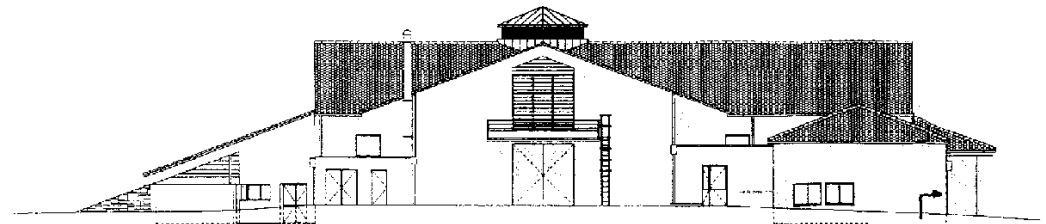
FACADE SUD



FACADE EST

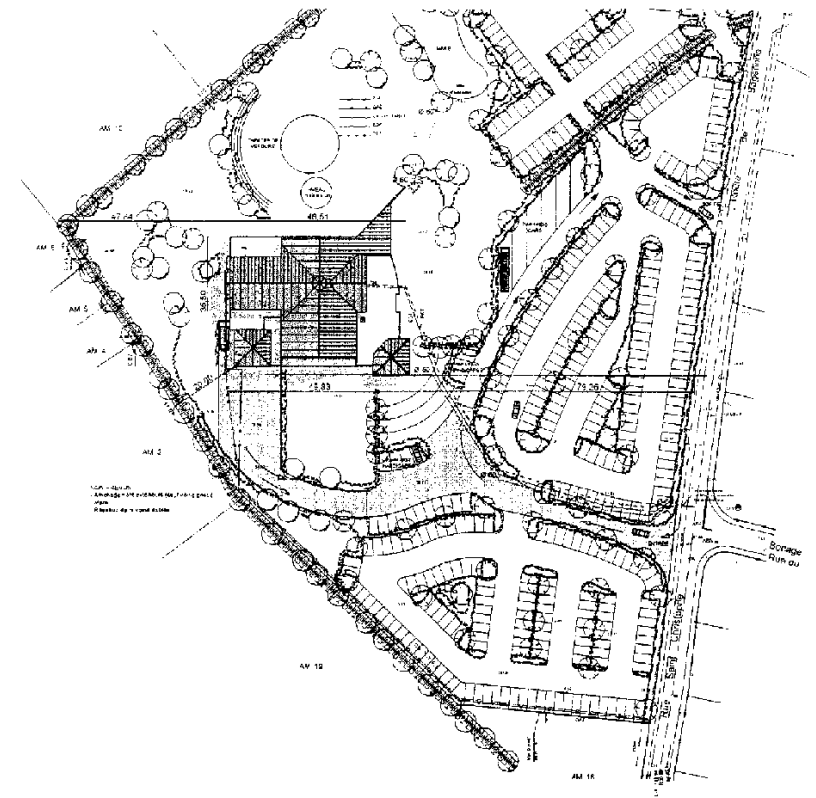


FACADE OUEST

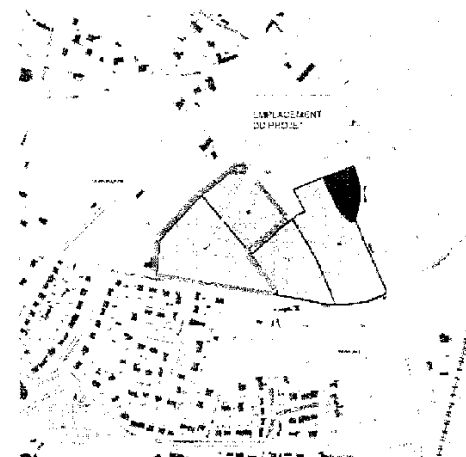


FACADE NORD

Descente EP
étudiée en partie C



PLAN DE MASSE 1/500



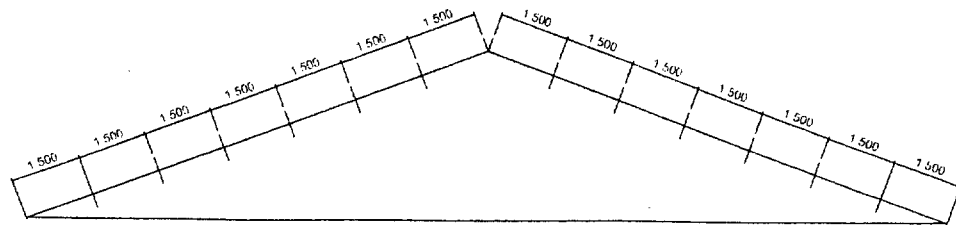
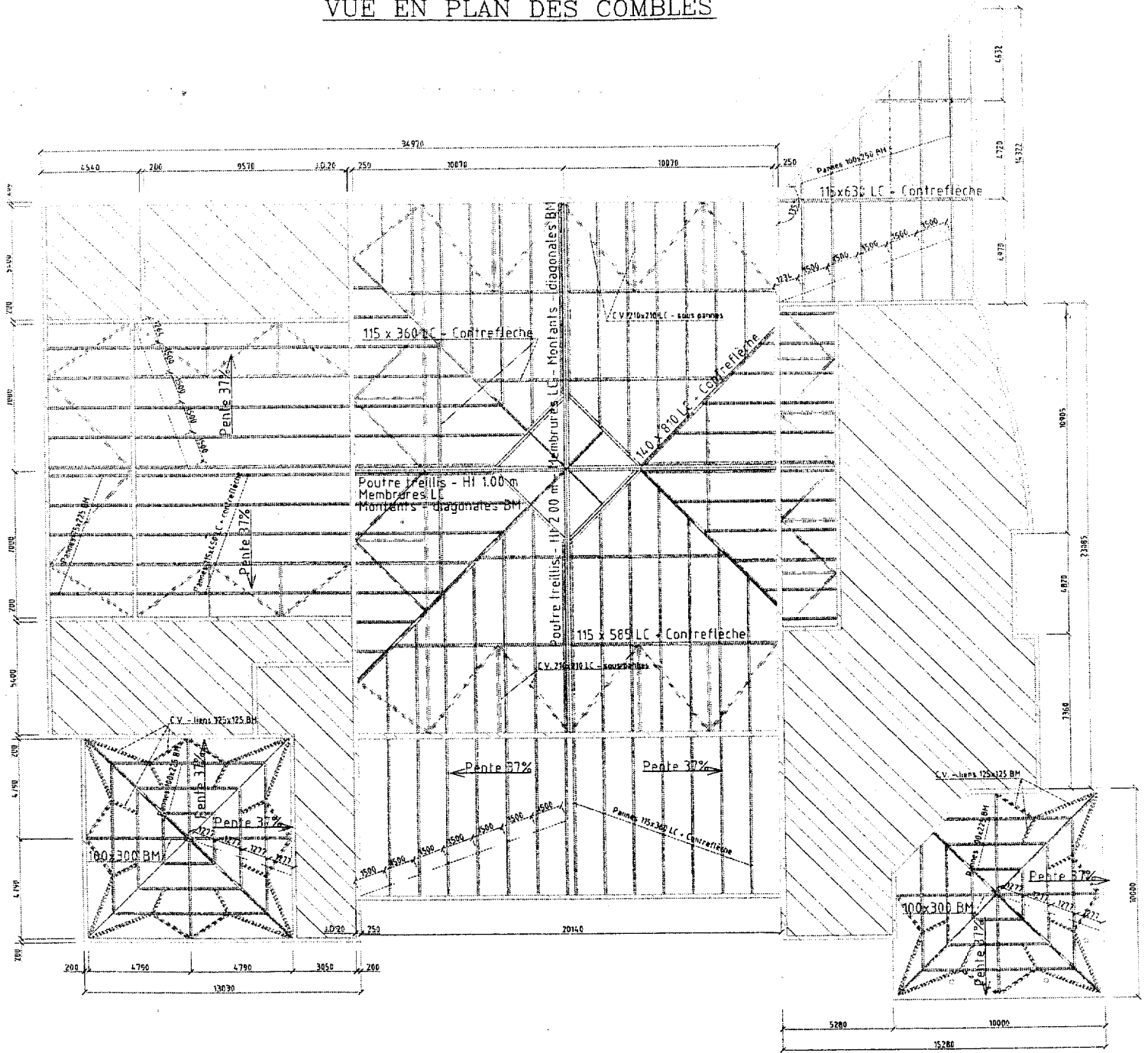
PLAN DE SITUATION

03-Plan de situation

Plan masse

Façades

VUE EN PLAN DES COMBLES



POSITIONS DES PANNES LC

04- Plan de principe de la charpente

B.T.S. E.E.C.		Session 2008
ECETUTL	Epreuve U51	Page 15 / 35

