

B.T.S PRODUCTIQUE BOIS ET AMEUBLEMENT

Option – A : « Développement et industrialisation »
Option – B : « Productique et gestion industrielle »

ETUDE D'INDUSTRIALISATION. OPTION A & B

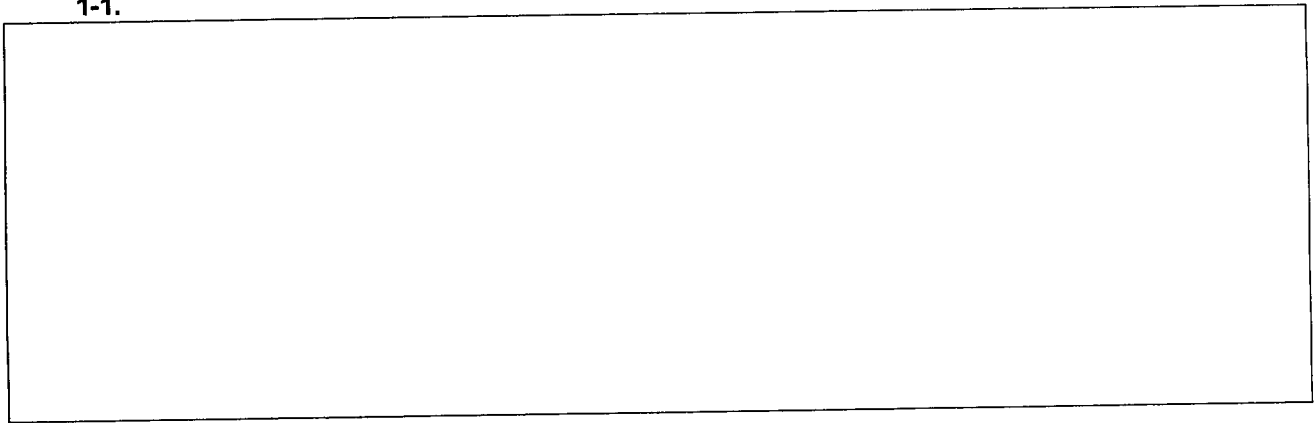
SOUS EPREUVE U5.3

Etude et programmation de système
automatisé

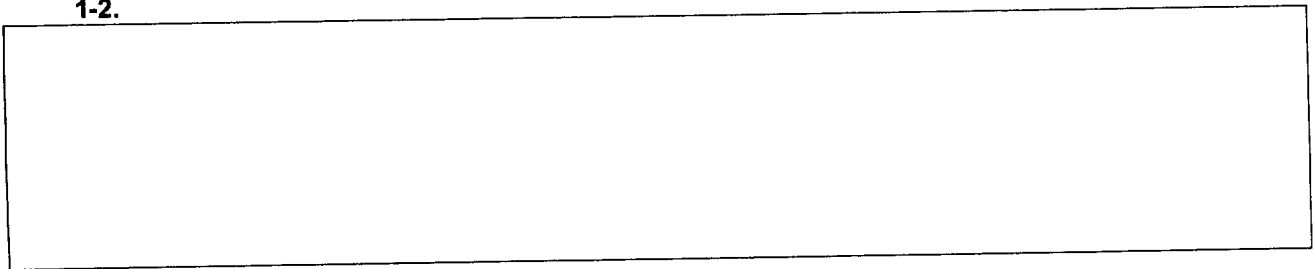
Coefficient : 1
Durée : 1 heure

DOSSIER REPONSES

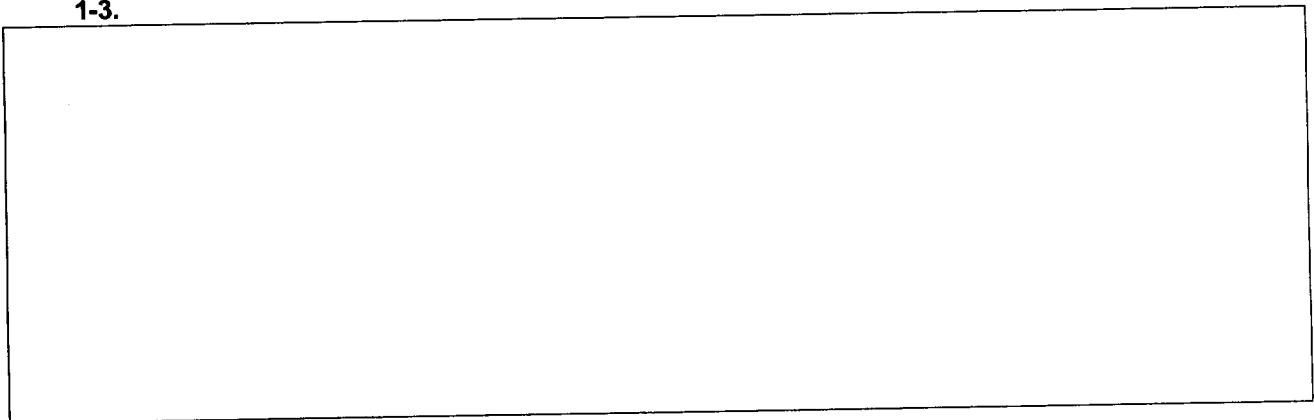
1-1.



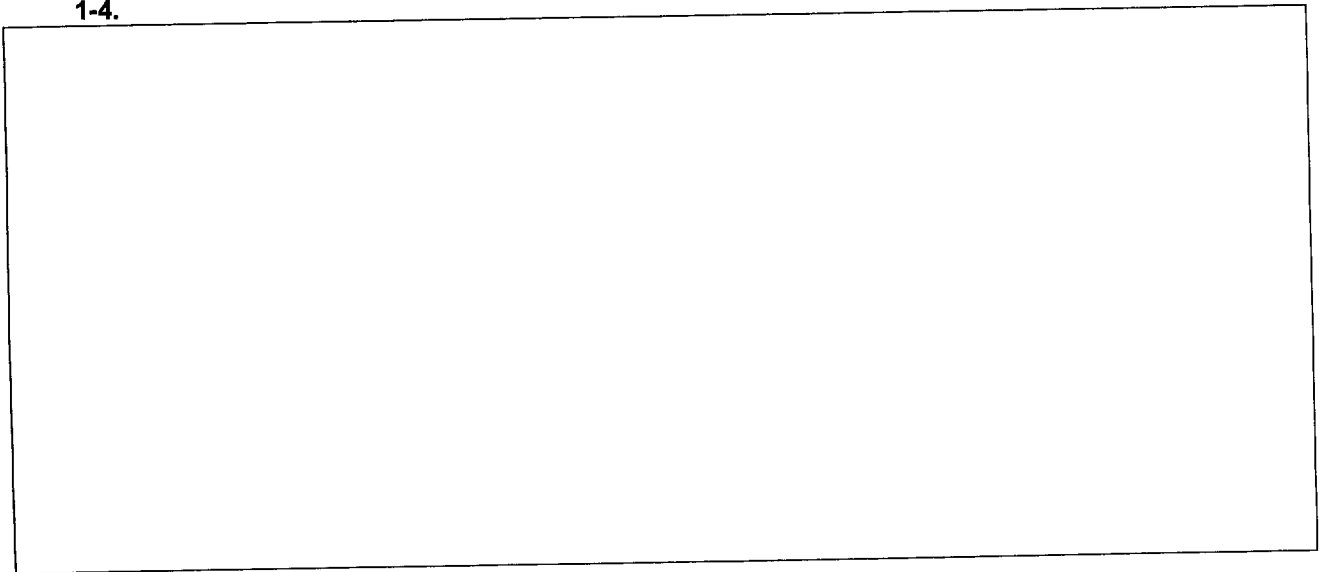
1-2.



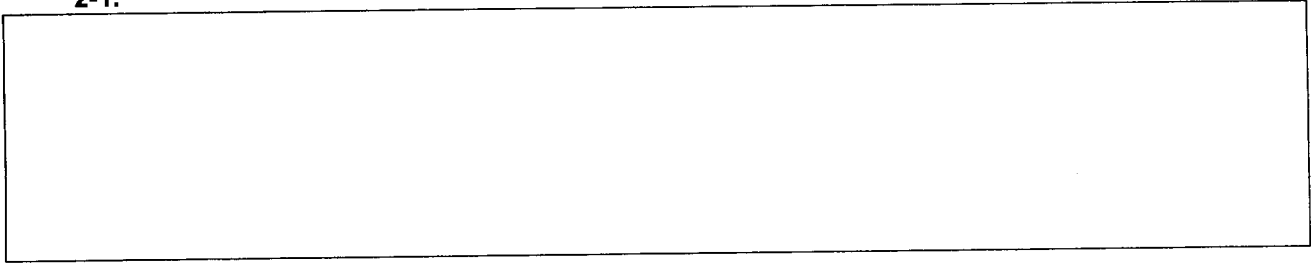
1-3.



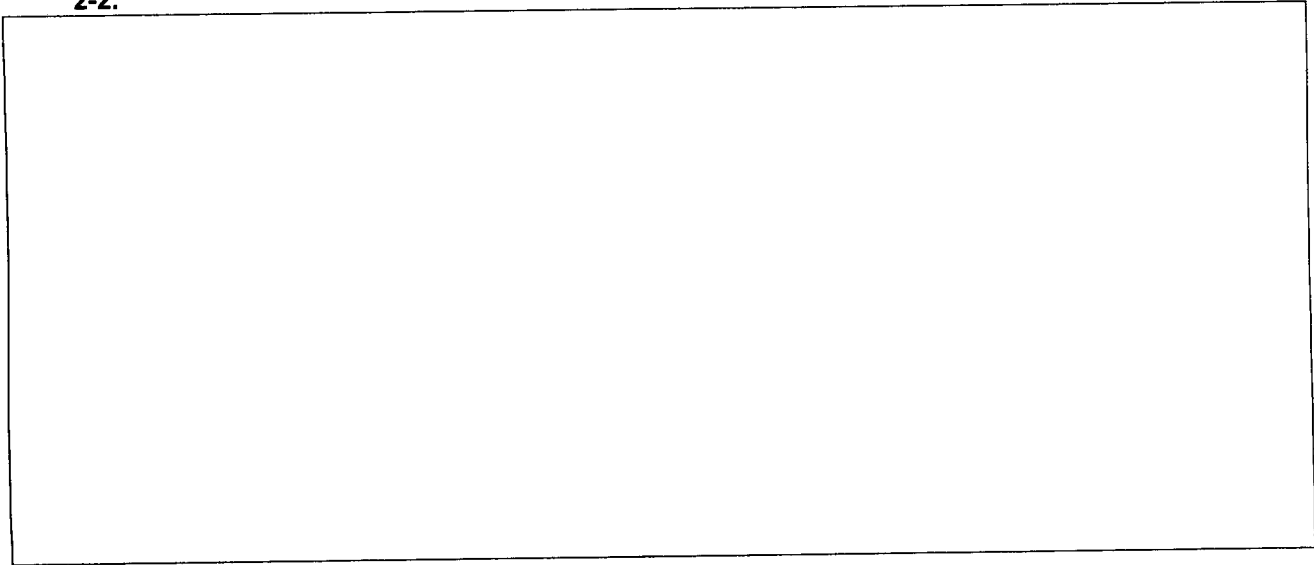
1-4.



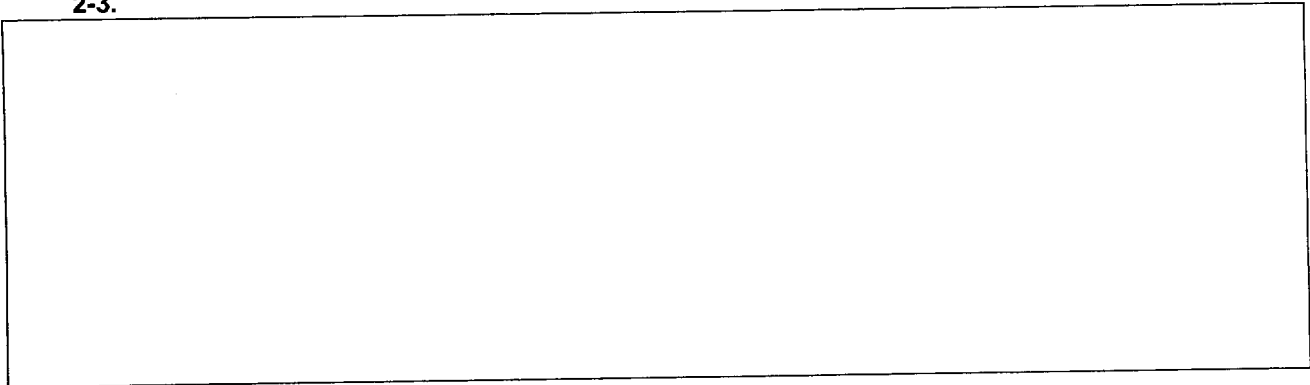
2-1.



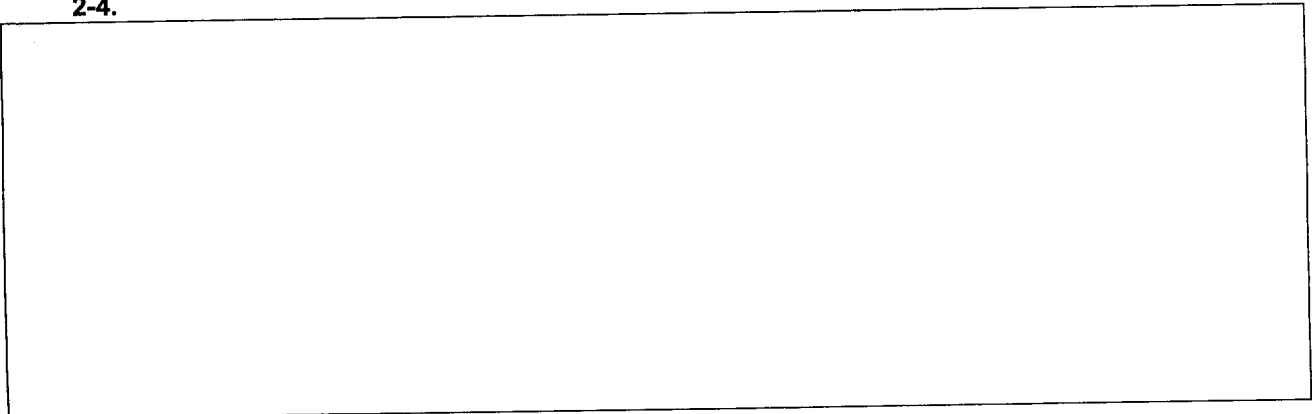
2-2.



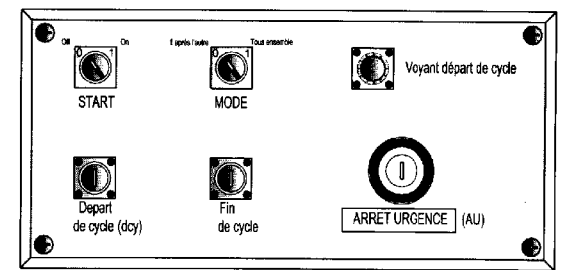
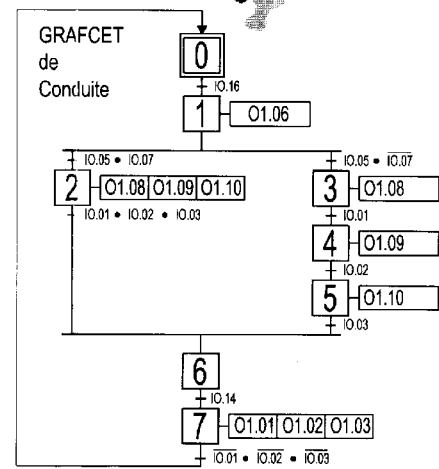
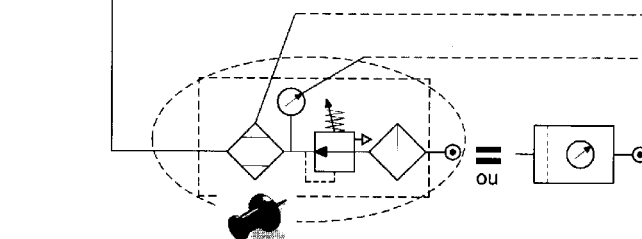
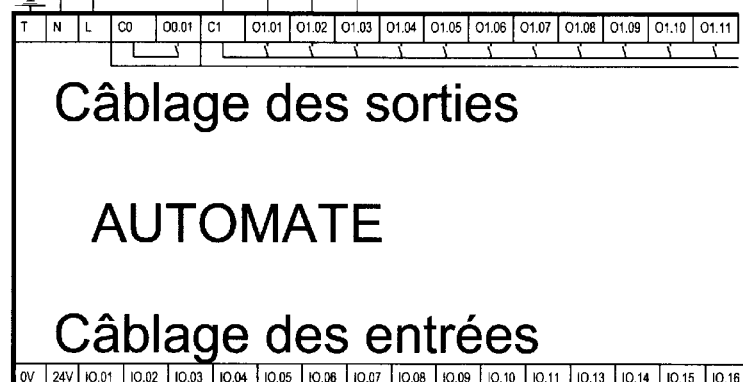
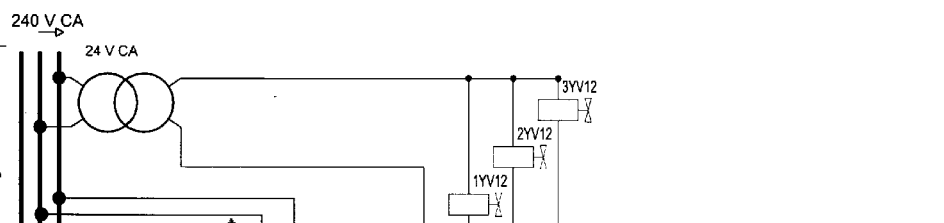
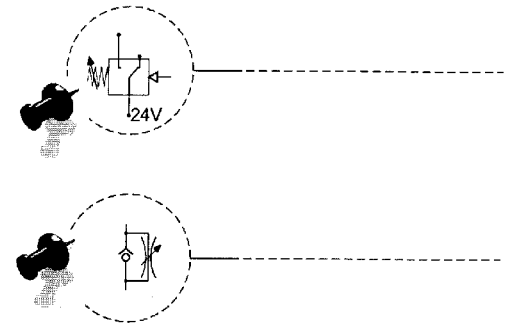
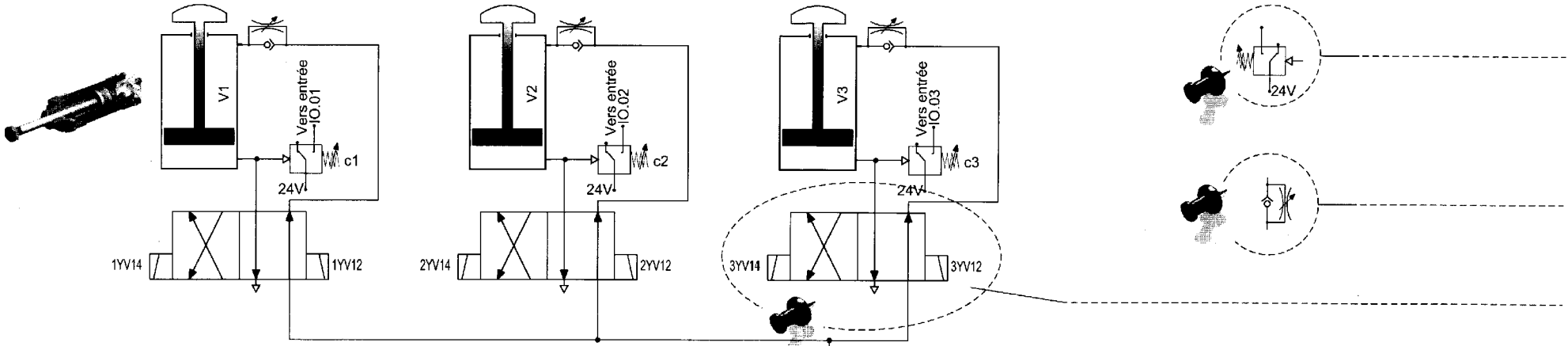
2-3.



2-4.



Document réponse aux questions : 3.1 & 3.2



Numero :
 Repere eprouve :
 BTS Productique
 Bois

Schéma de câblage
BALANCELLE

DR.3

Designation de la pièce	DATE	01	****
Traverses de toit - Serrage	Echelle	Indice	Modifications
MATIERE:	Nbre/produit:	DESSIN N°:	****