



**LE RÉSEAU DE CRÉATION
ET D'ACCOMPAGNEMENT PÉDAGOGIQUES**

**Ce document a été mis en ligne par le Canopé de l'académie de Montpellier
pour la Base Nationale des Sujets d'Examens de l'enseignement professionnel.**

Ce fichier numérique ne peut être reproduit, représenté, adapté ou traduit sans autorisation.

**Baccalauréat Professionnel
" OUVRAGES DU BÂTIMENT : MÉTALLERIE "**

SESSION 2015

2^e Partie

DURÉE : 15 heures

COEFFICIENT : 3

DOSSIER TECHNIQUE

E.3 - Réalisation d'un ouvrage

Sous-épreuve E.32 - Fabrication d'un ouvrage (U.32)

Ce dossier comporte 13 documents :

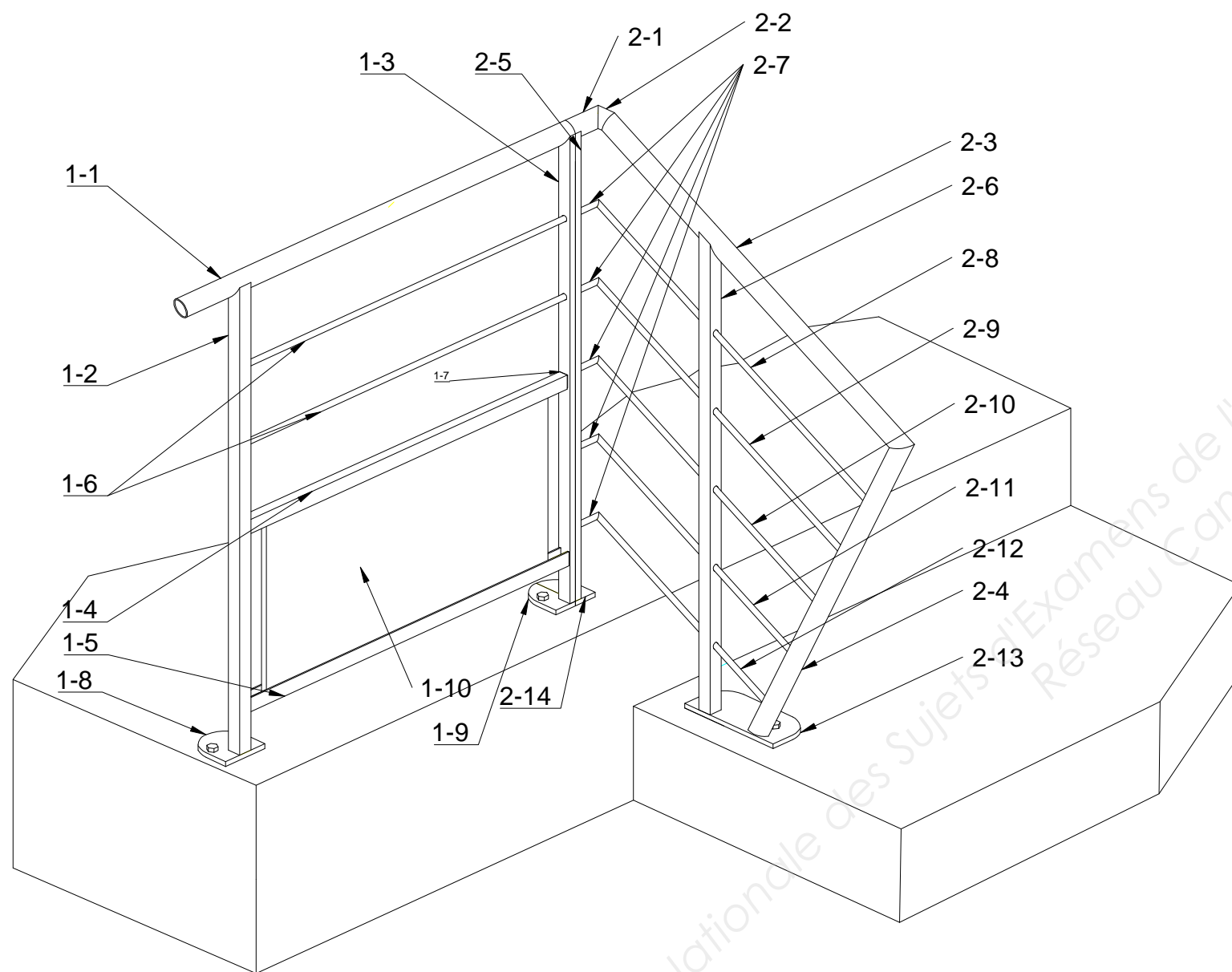
DT 01/13 à DT 13/13.

À noter : les documents sont au format A3.

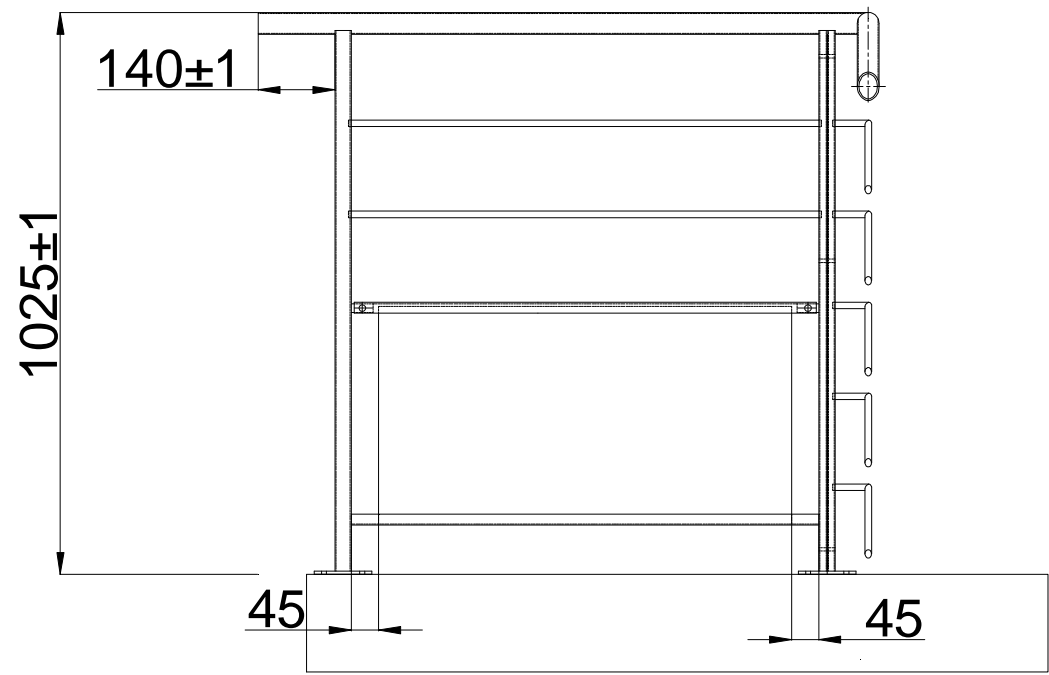
Consigne aux surveillant/e/s :

Le dossier devra être restitué à l'issue de l'épreuve

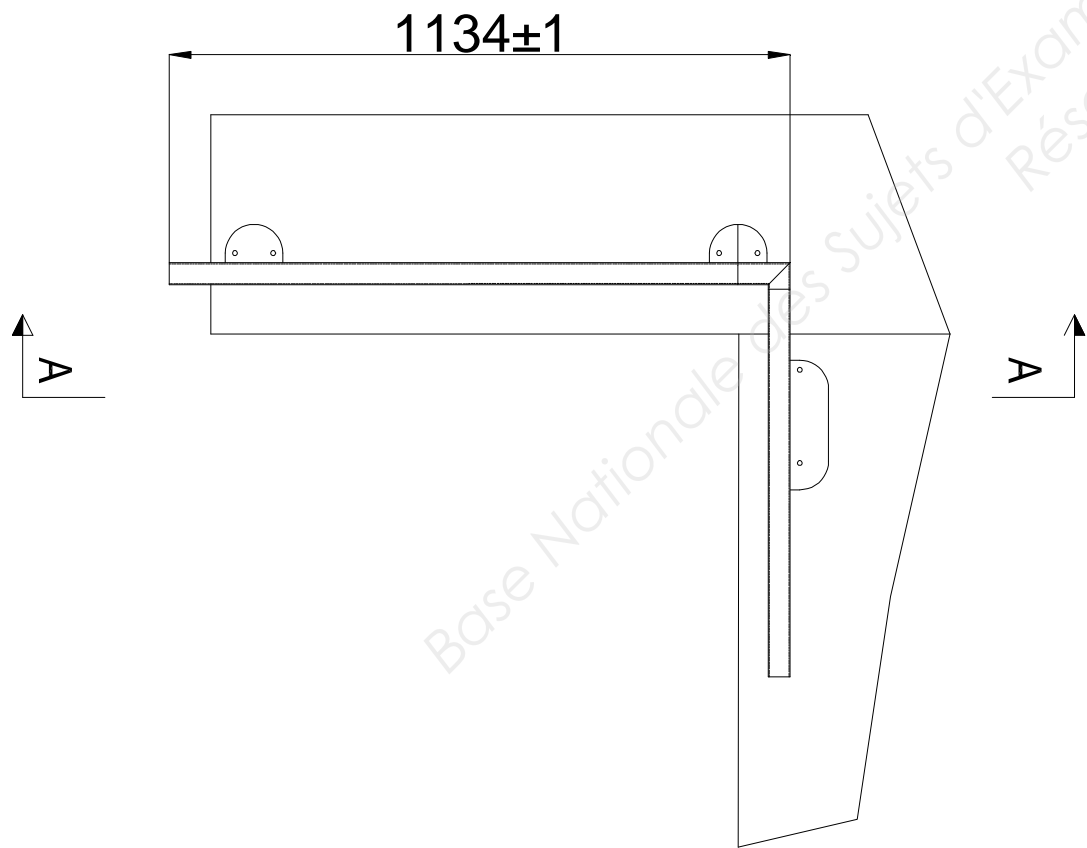
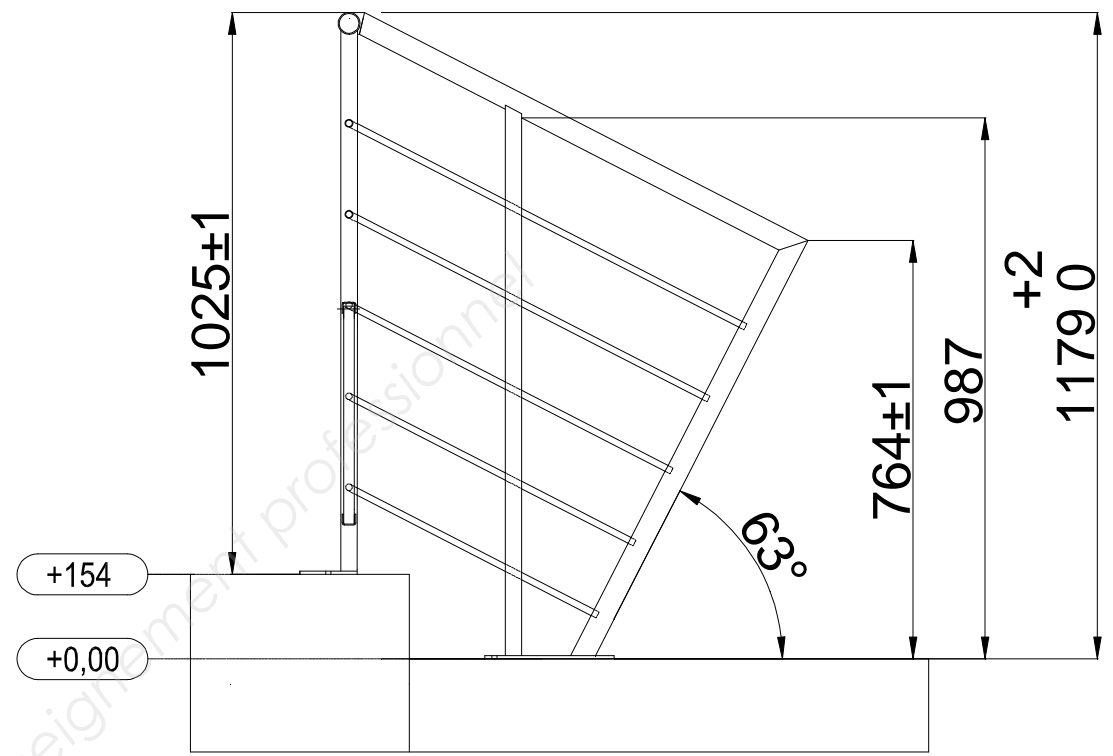
N° de candidat(e) :



| | | | | |
|------------|-----------|---------------------------------|----------------|---------------------|
| 2-14 | 1 | Demie platine | S 235 | tôle ép. 6 mm |
| 2-13 | 1 | Platine basse | S 235 | tôle ép. 6 mm |
| 2-12 | 1 | Lisse rampant | S 235 | rond ø 12 |
| 2-11 | 1 | Lisse rampant | S 235 | rond ø 12 |
| 2-10 | 1 | Lisse rampant | S 235 | rond ø 12 |
| 2-9 | 1 | Lisse rampant | S 235 | rond ø 12 |
| 2-8 | 1 | Lisse rampant | S 235 | rond ø 12 |
| 2-7 | 5 | Raccord lisse | S 235 | rond ø 12 |
| 2-6 | 1 | Poteau rampant | S 235 | tube 30 x 30 x 2 |
| 2-5 | 1 | Poteau intermédiaire | S 235 | tube 30 x 20 x 1,5 |
| 2-4 | 1 | Retour de lisse | S 235 | tube ø 40 x 2 |
| 2-3 | 1 | Lisse rampant | S 235 | tube ø 40 x 2 |
| 2-2 | 1 | Raccord lisse haute | S 235 | tube ø 40 x 2 |
| 2-1 | 1 | Lisse haute rampant horizontale | S 235 | tube ø 40 x 2 |
| 1-10 | 1 | Panneau de remplissage | dérivé du bois | aggloméré |
| 1-9 | 1 | Demie platine | S 235 | tôle ép. 6 mm |
| 1-8 | 1 | Platine | S 235 | tôle ép.6 mm |
| 1-7 | 2 | Support | S 235 | carré 16 |
| 1-6 | 2 | Lisse intermédiaire | S 235 | rond ø 12 |
| 1-5 | 1 | Support remplissage bas | S 235 | tôle ép. 2 mm |
| 1-4 | 1 | Support remplissage haut | S 235 | tôle ép. 2 mm |
| 1-3 | 1 | Poteau intermédiaire | S 235 | tube 30 x 20 x 1,5 |
| 1-2 | 1 | Poteau | S 235 | tube 30 x 30 x 2 |
| 1-1 | 1 | Lisse haute | S 235 | tube ø 40 x 2 |
| Rep | Nb | Désignation | Matière | Observations |

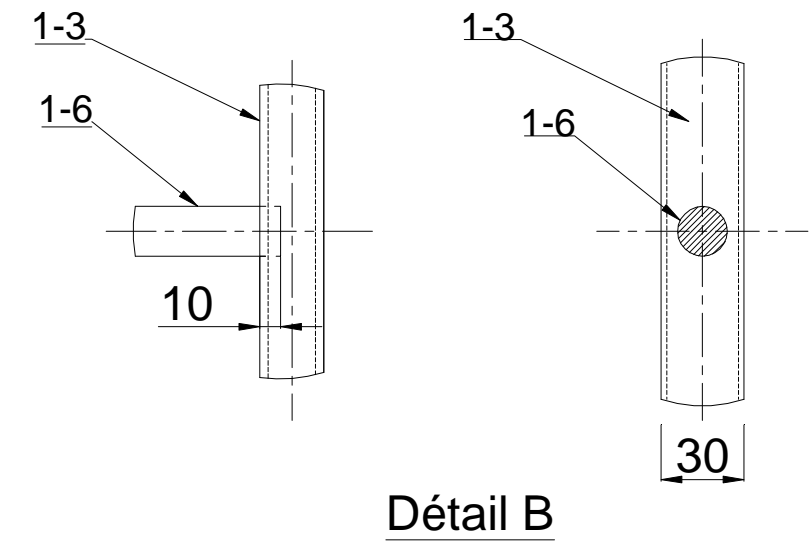
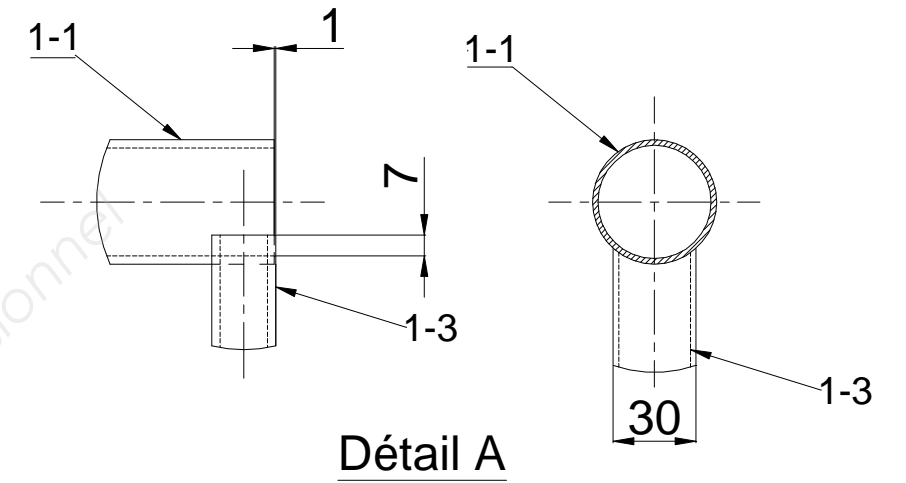
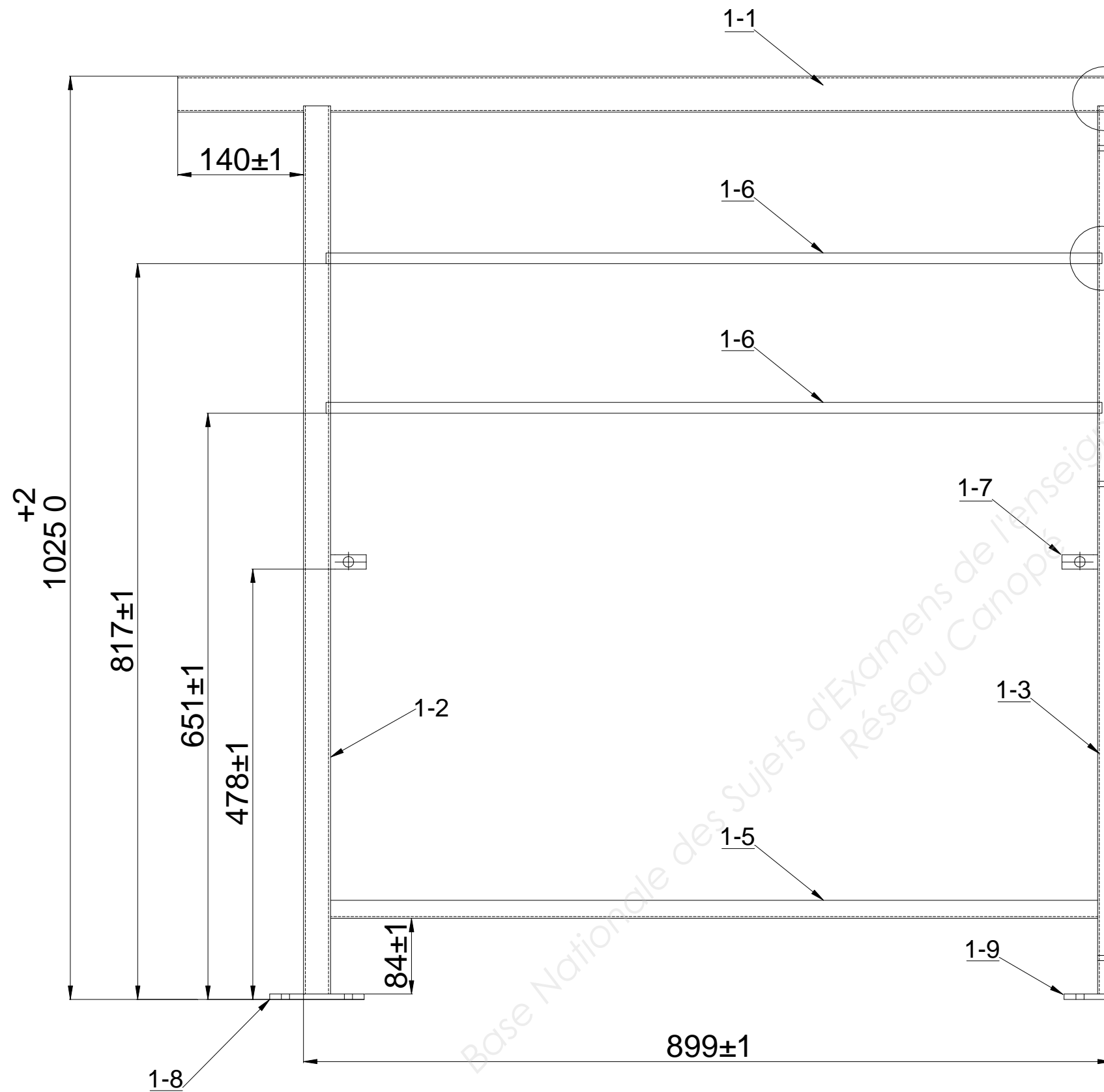


Coupe A - A



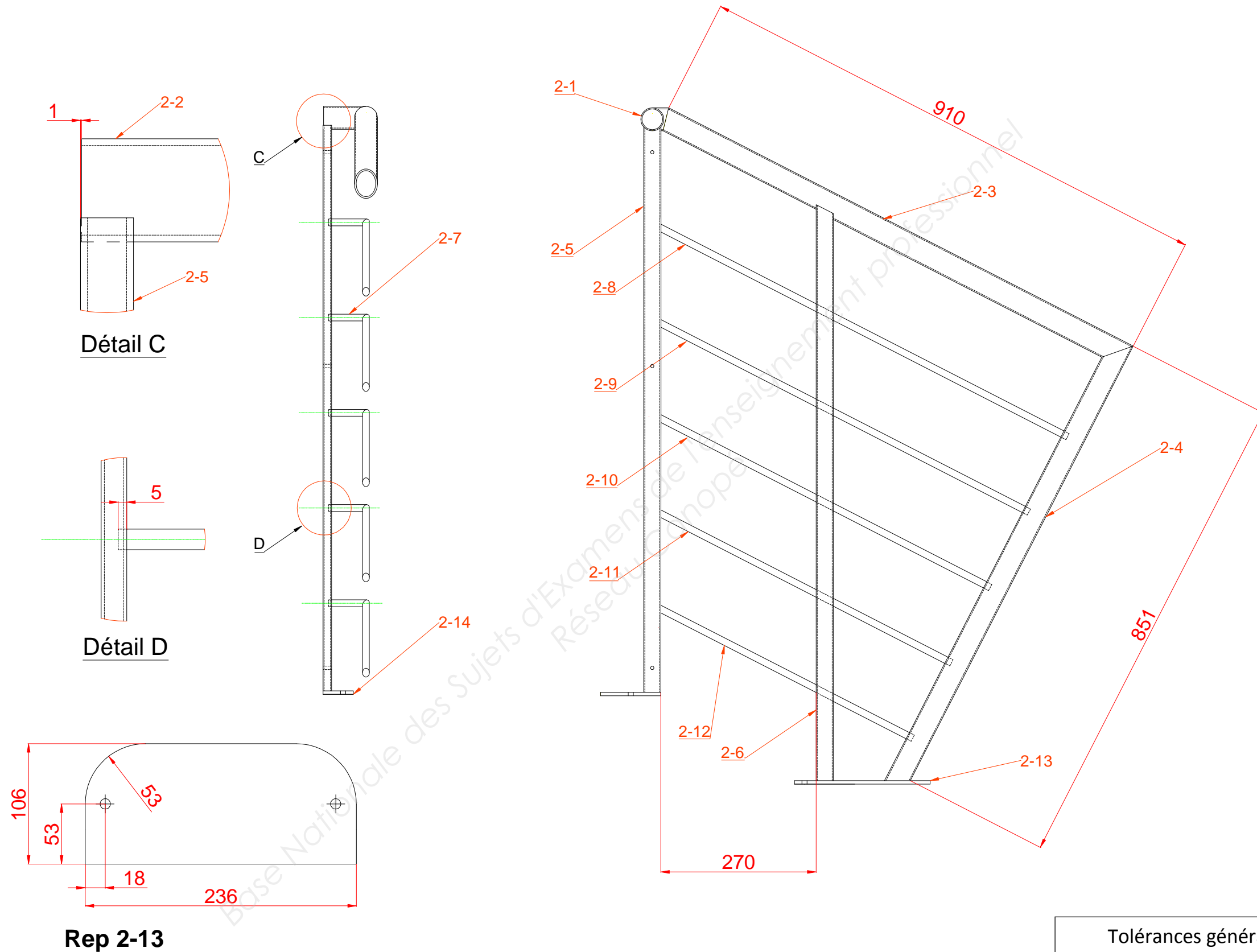
Tolérances générales ISO 13920-AA

Plan sans échelle



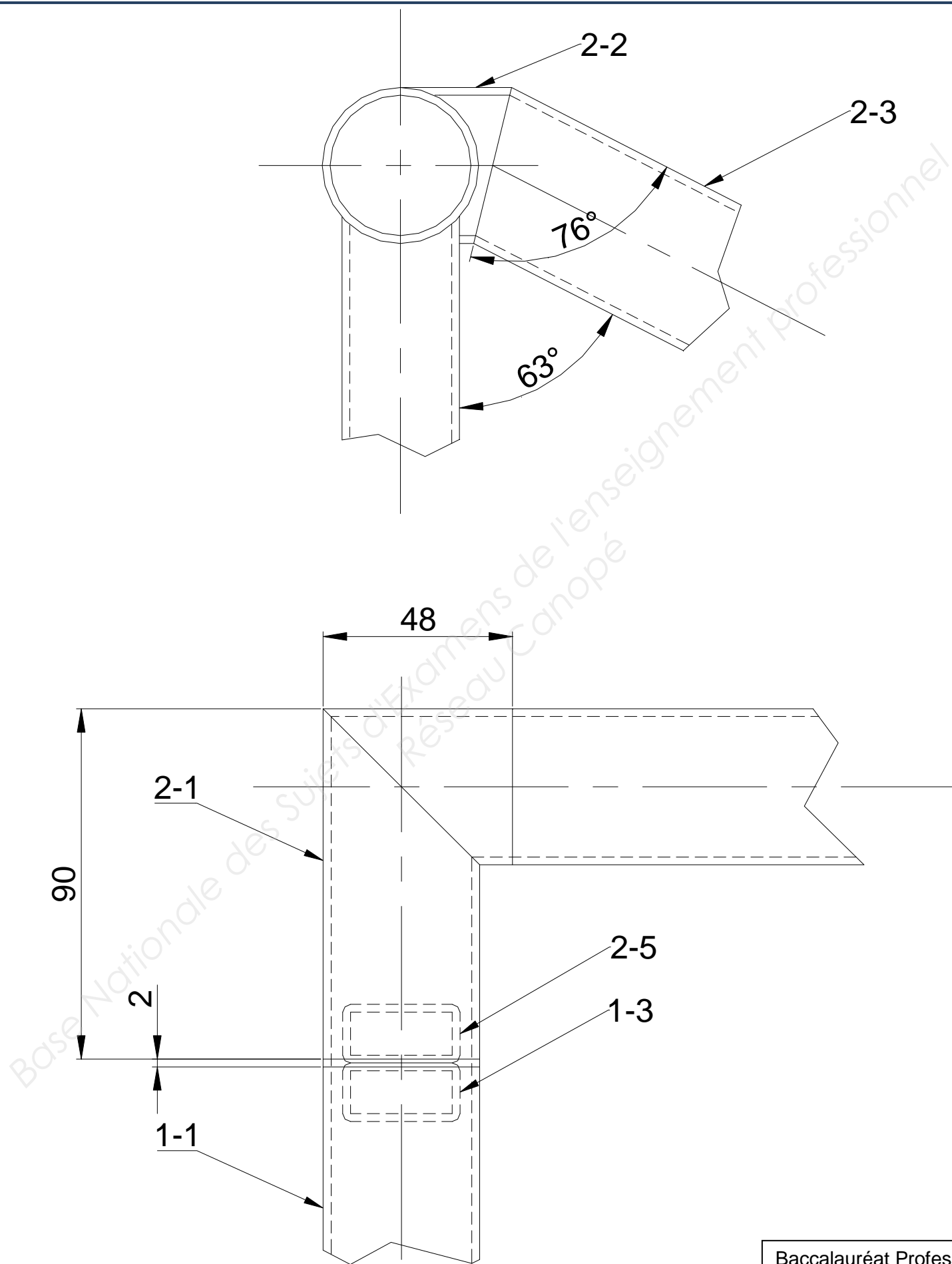
Tolérances générales ISO 13920-AA

Plan sans échelle

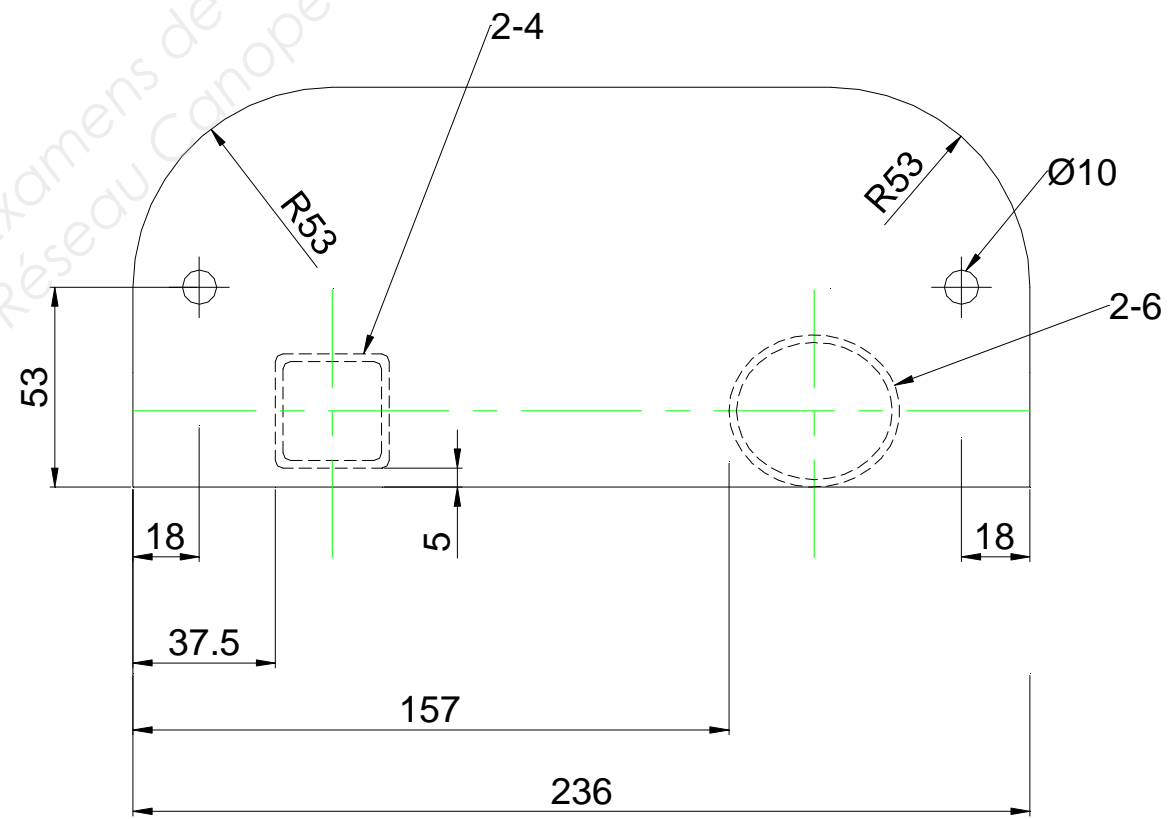
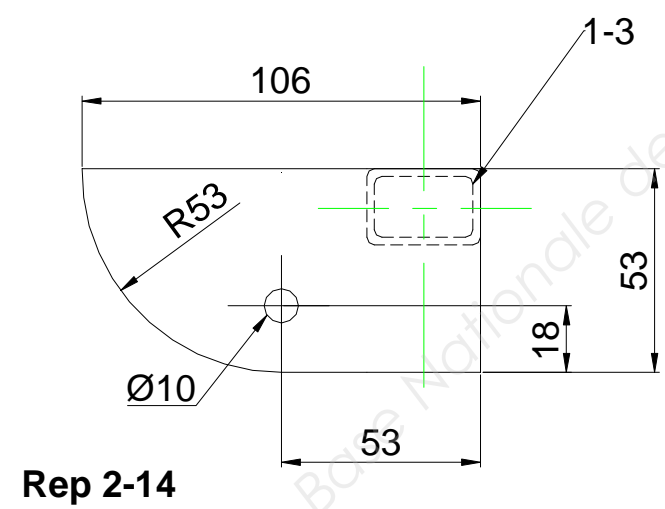
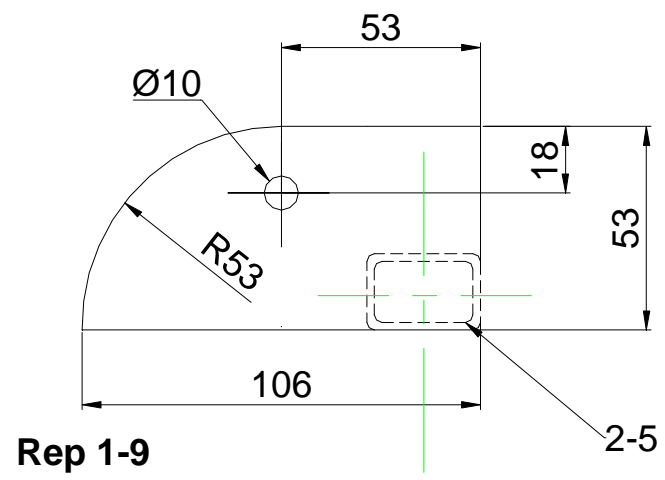
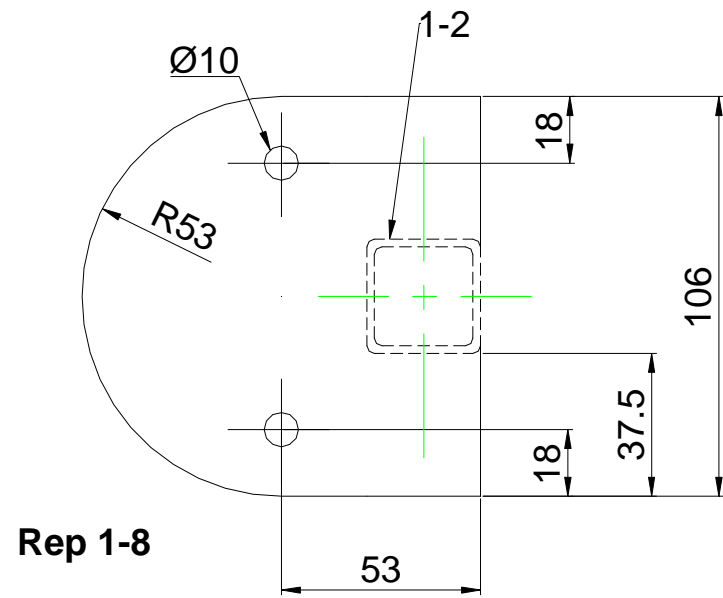


Tolérances générales ISO 13920-AA

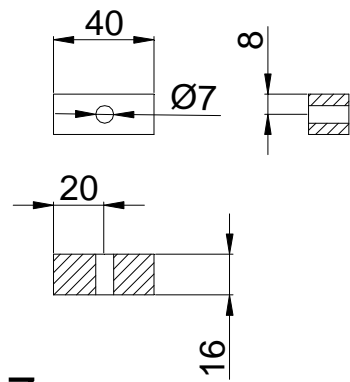
Plan sans échelle



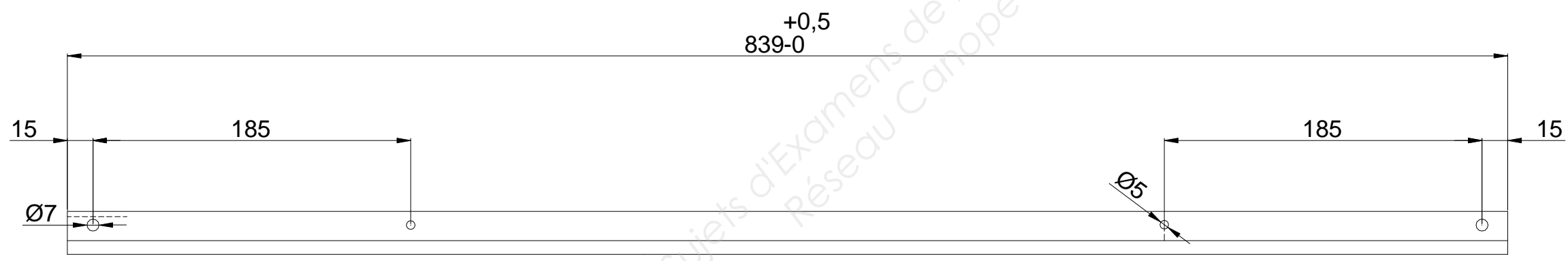
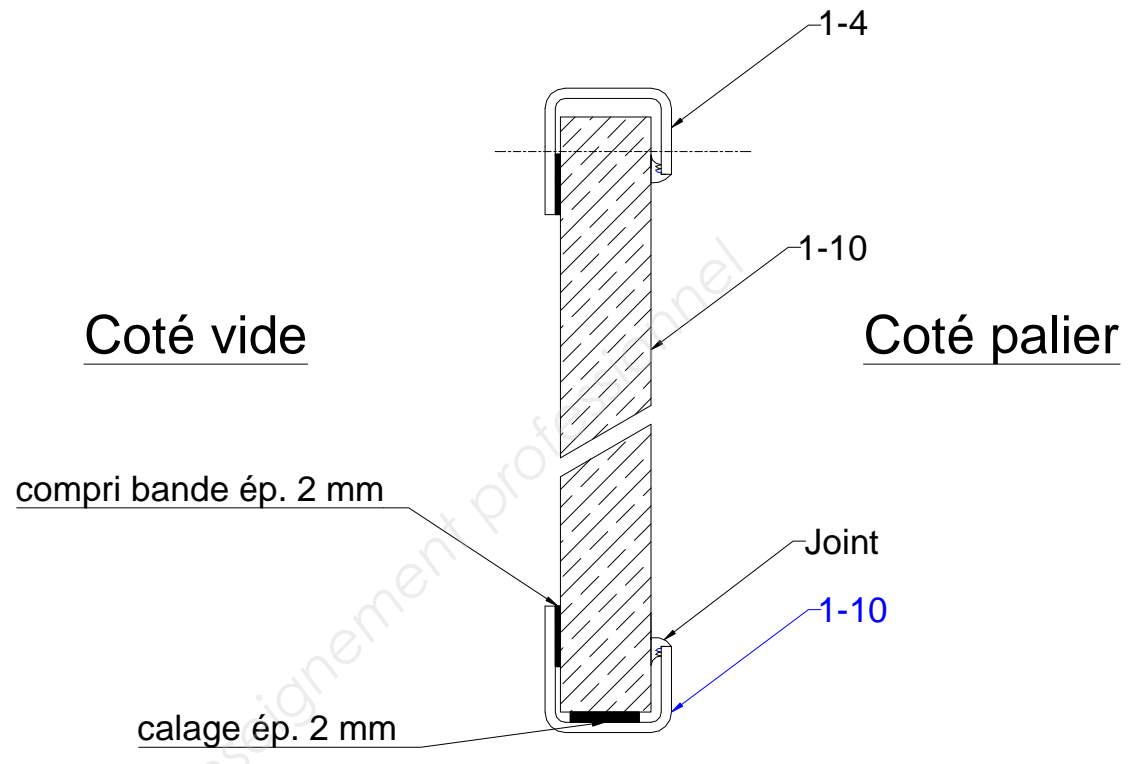
Tolérances générales ISO 13920-AA
 FAIT SANS ÉCHELLE



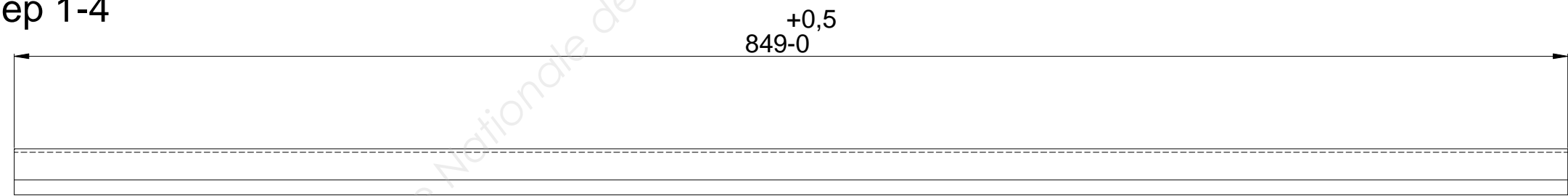
Plan sans échelle



Rep 1-7

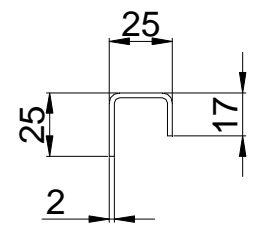
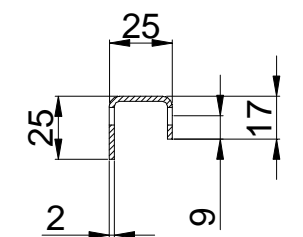


Rep 1-4

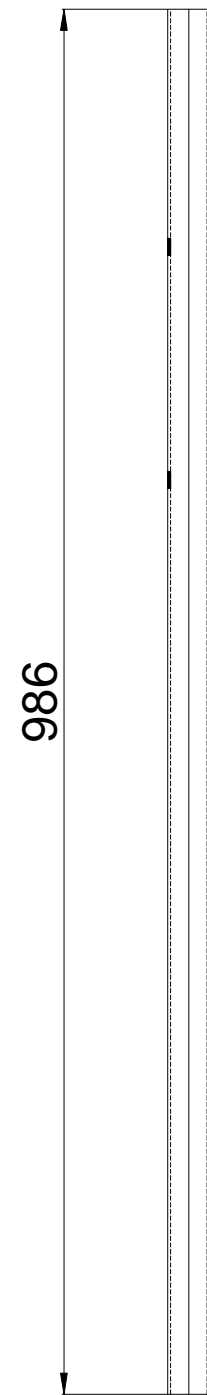


Rep 1-5

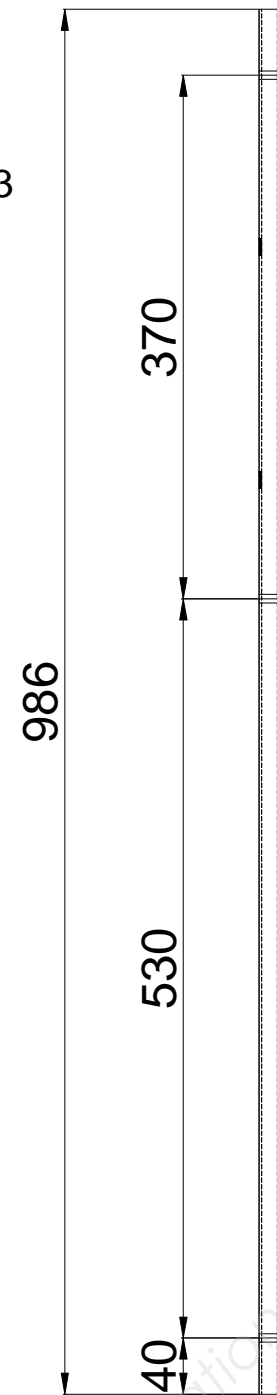
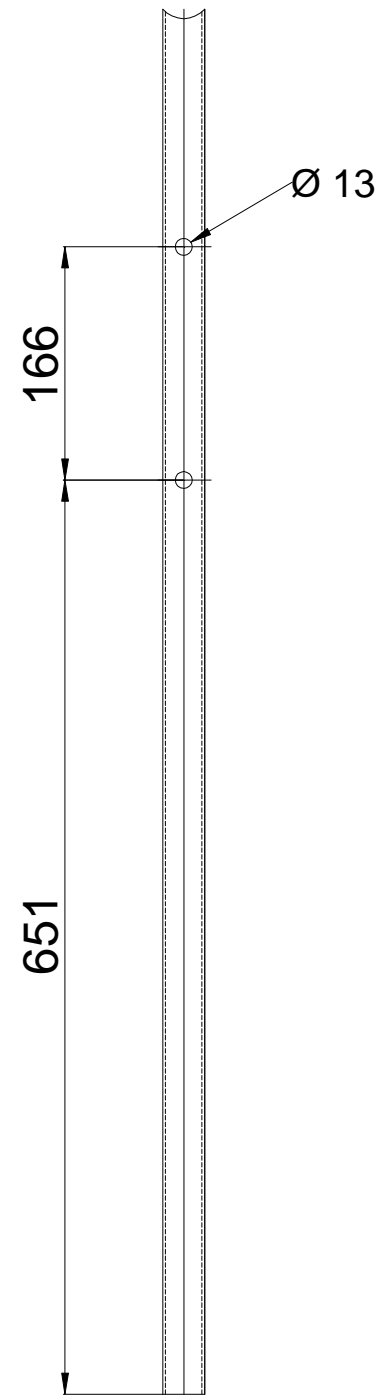
LD : Rep 1-4 = Rep 1-5 = 61 mm



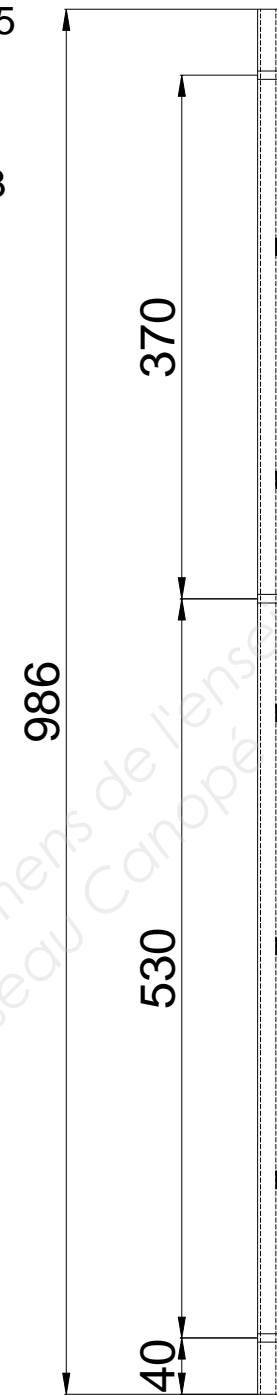
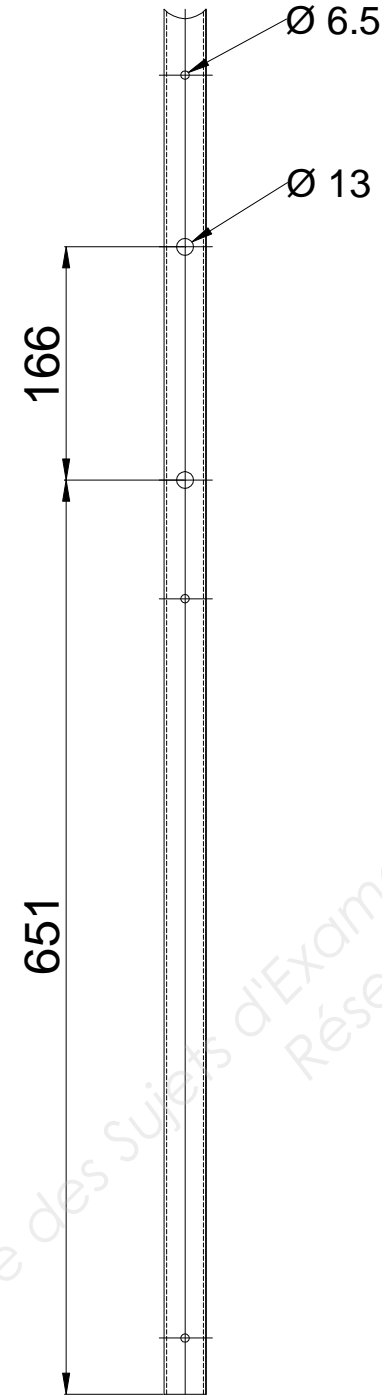
Plan sans échelle



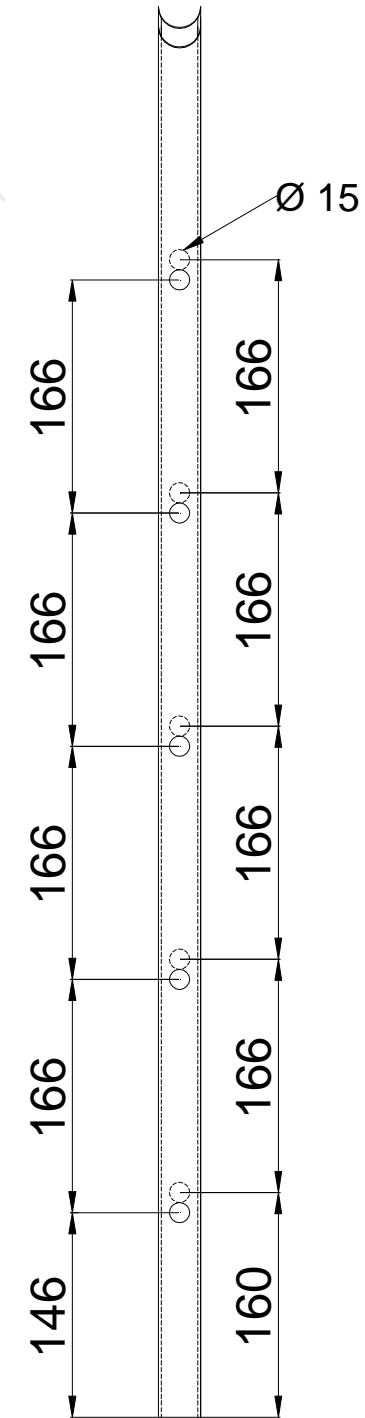
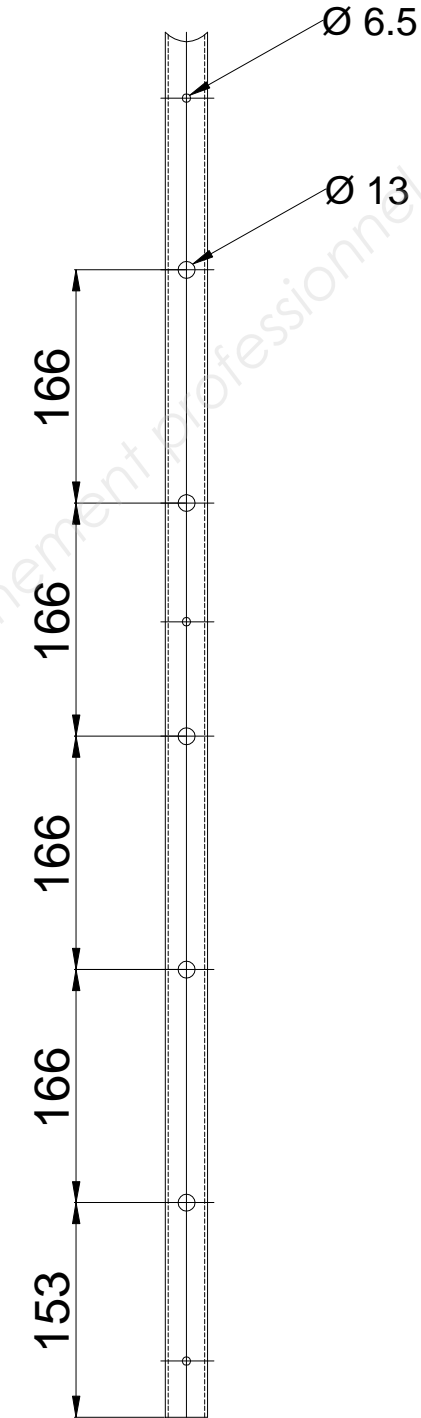
Rep 1-2



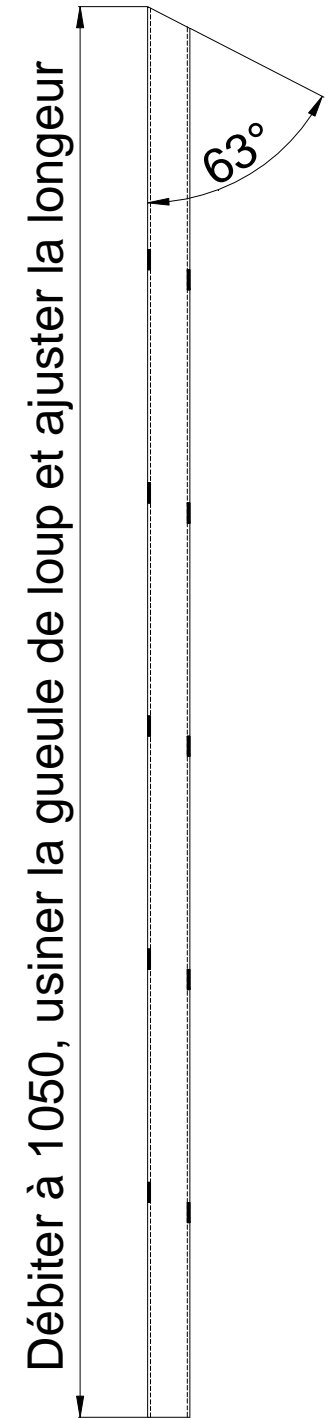
Rep 1-3



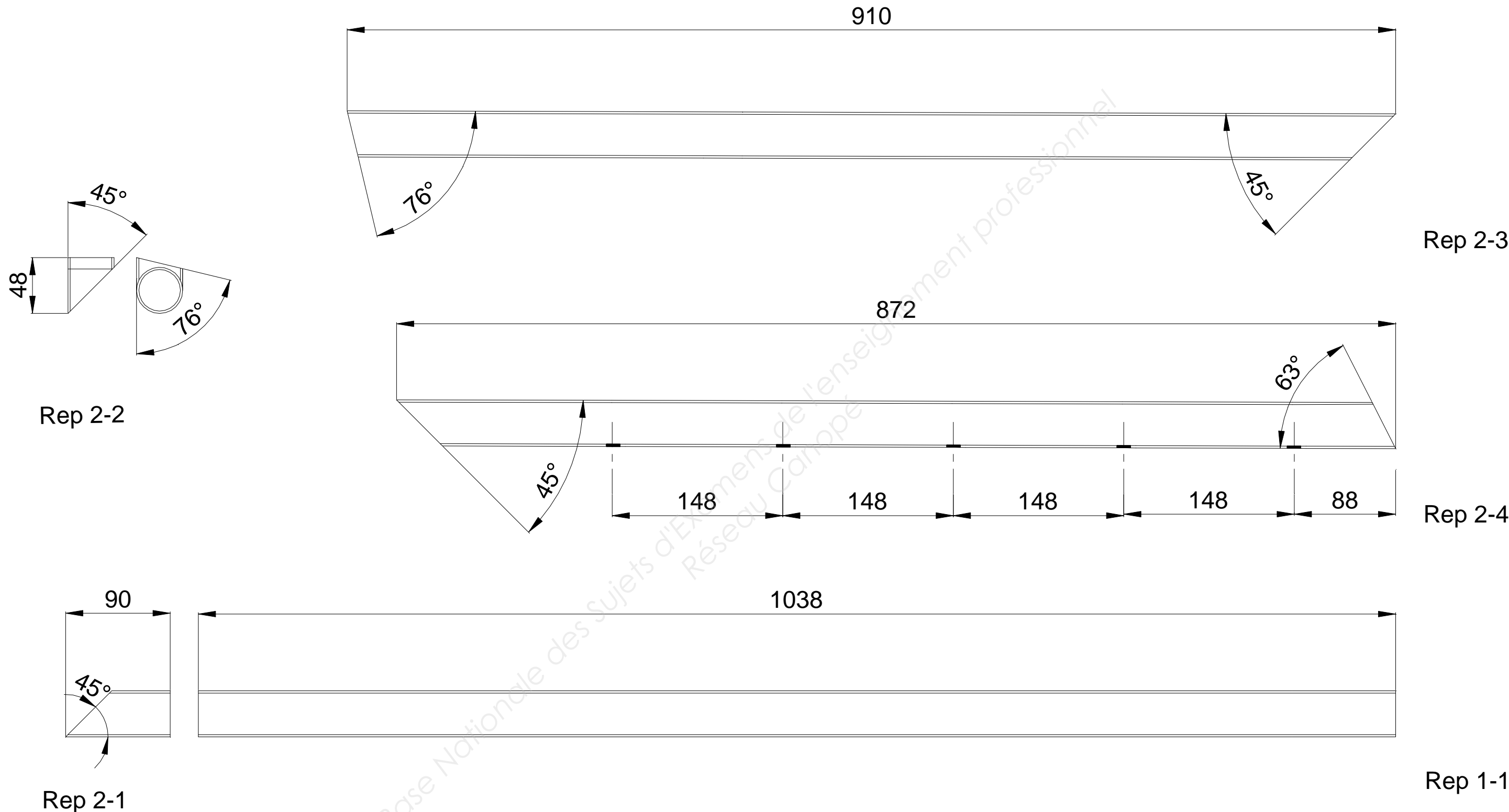
Rep 2-5



Rep 2-6

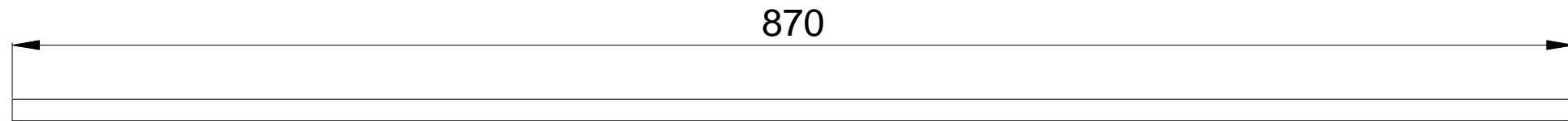


Plan sans échelle

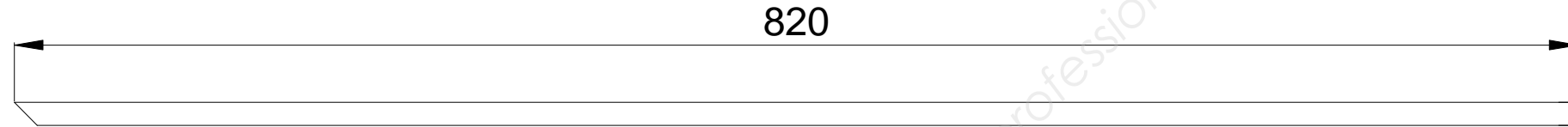


Plan sans échelle

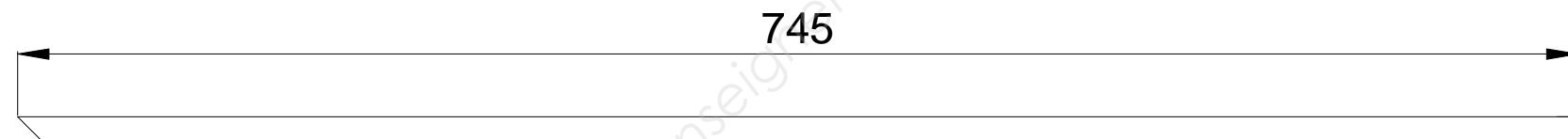
Rep 1-6



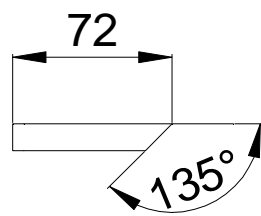
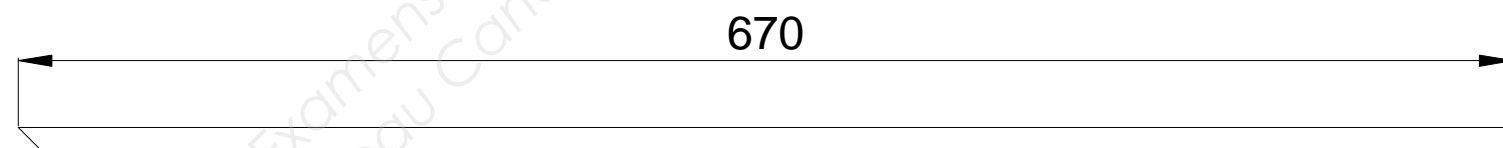
Rep 2-8



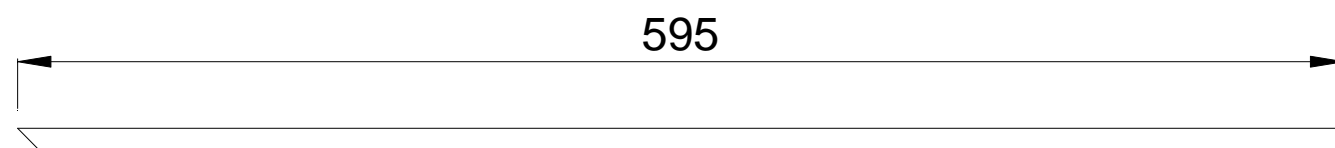
Rep 2-9



Rep 2-10

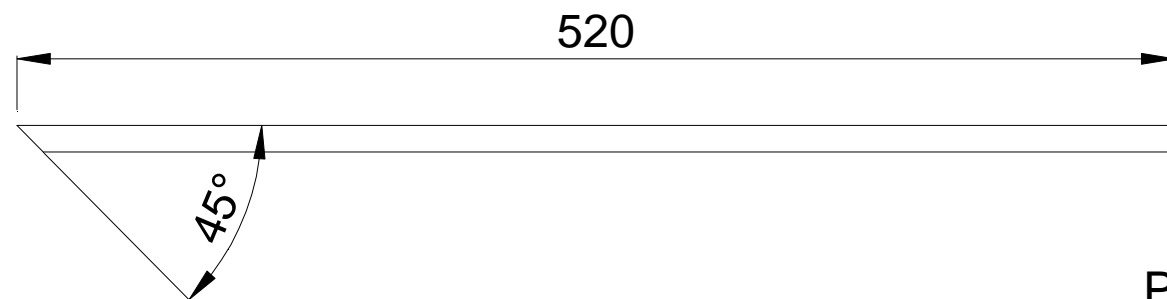


Rep 2-11

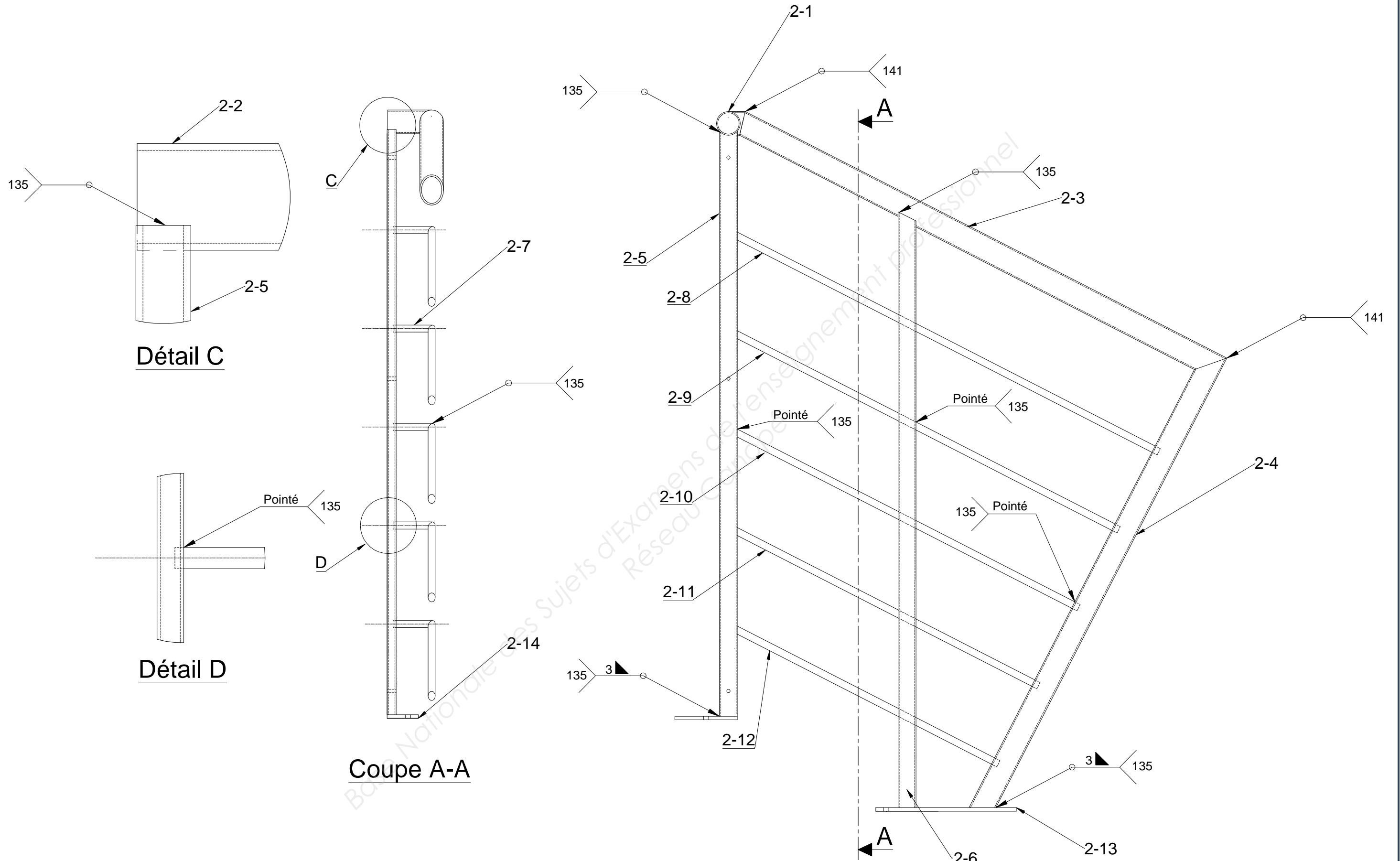


Rep 2-7

Rep 2-12



Plan sans échelle



Plan sans échelle