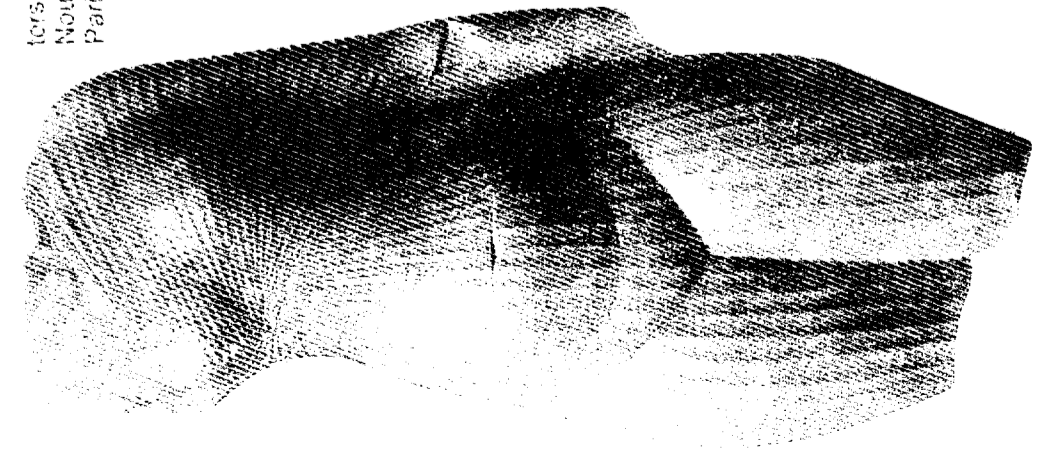
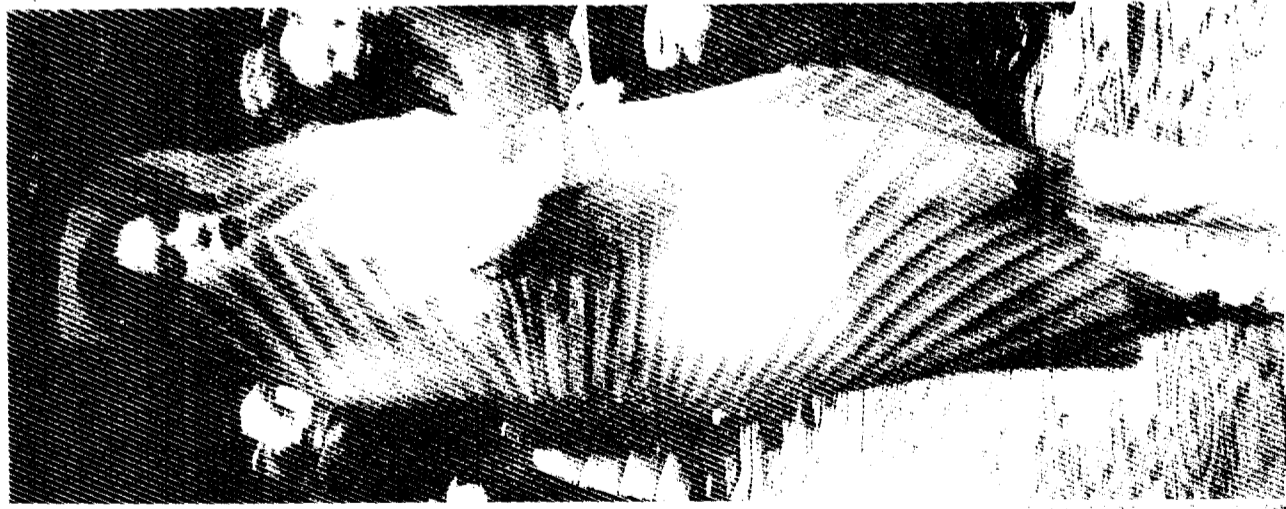


CORRIGE

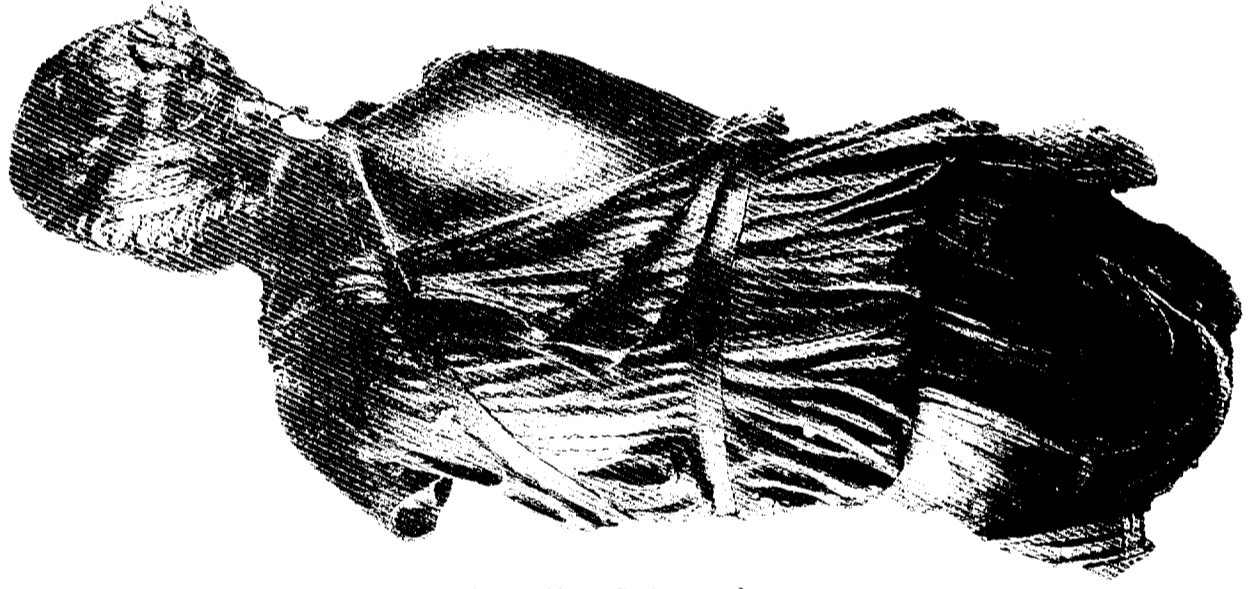
torse de Nefertiti Egypte
Nouvel Empire
Paris Louvre



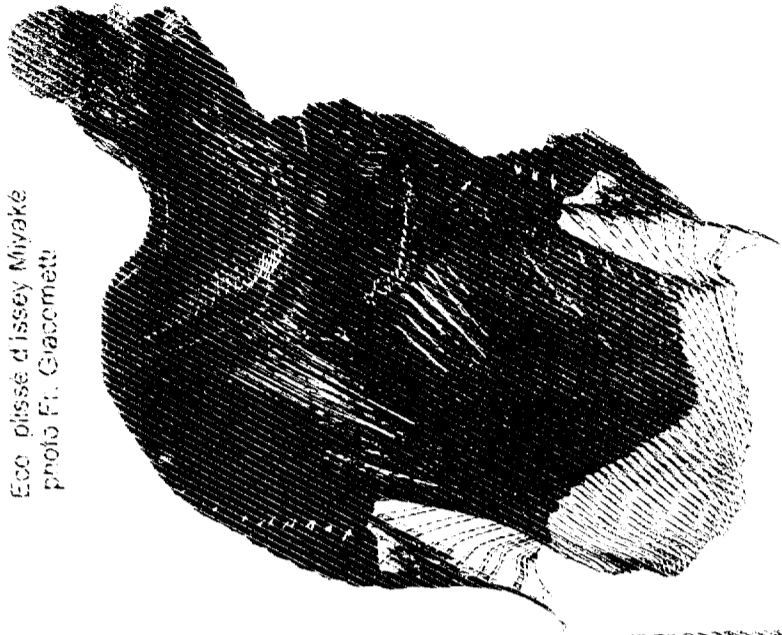
manteau plissé
Jeremy Scott
artisan plisseur M. Sarge
2000



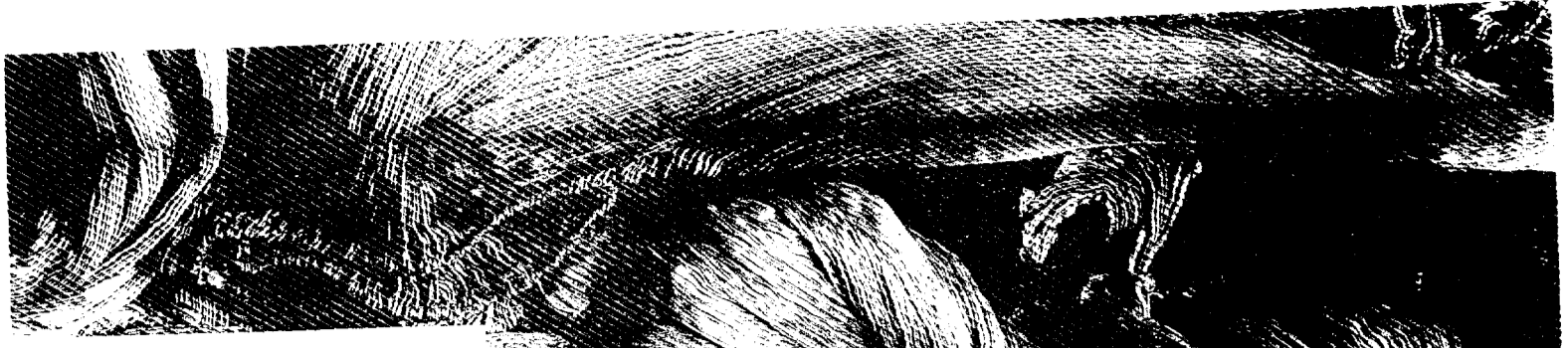
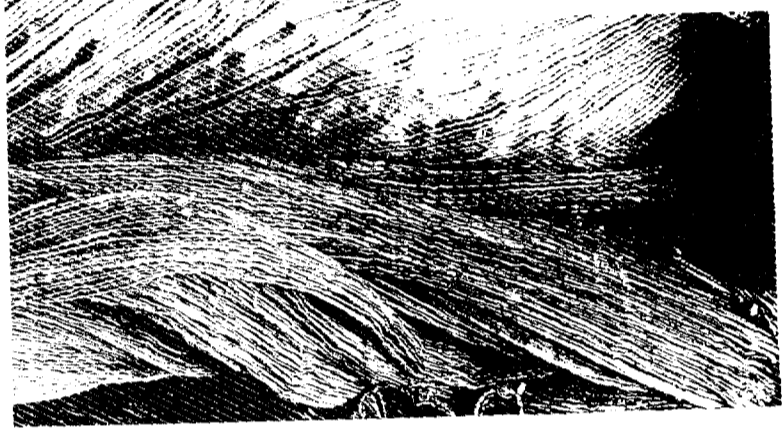
J. Vinache Atalante
d'après l'antique 1688 Paris Louvre



Eco plissé d'Issey Miyake
photo F. Giacometti



tunique de soie plissée appelée "Delphos"
Mariono Fortuny



torse féminin Phidias Rome
époque classique Paris Louvre

La pudeur
A. Corradini Naples chapelle Sansevero

