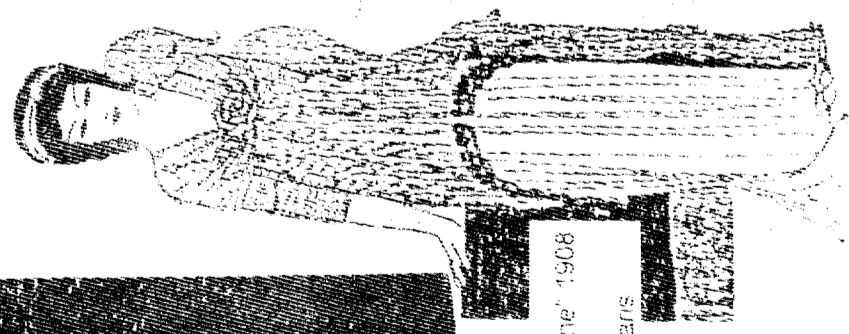
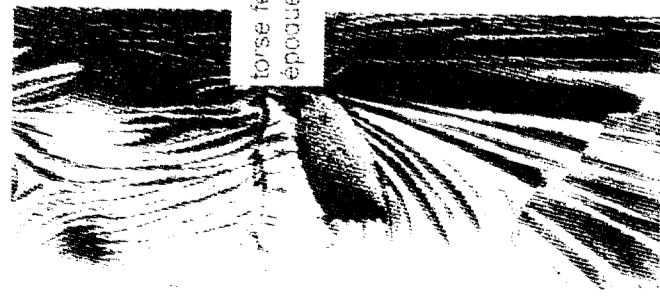


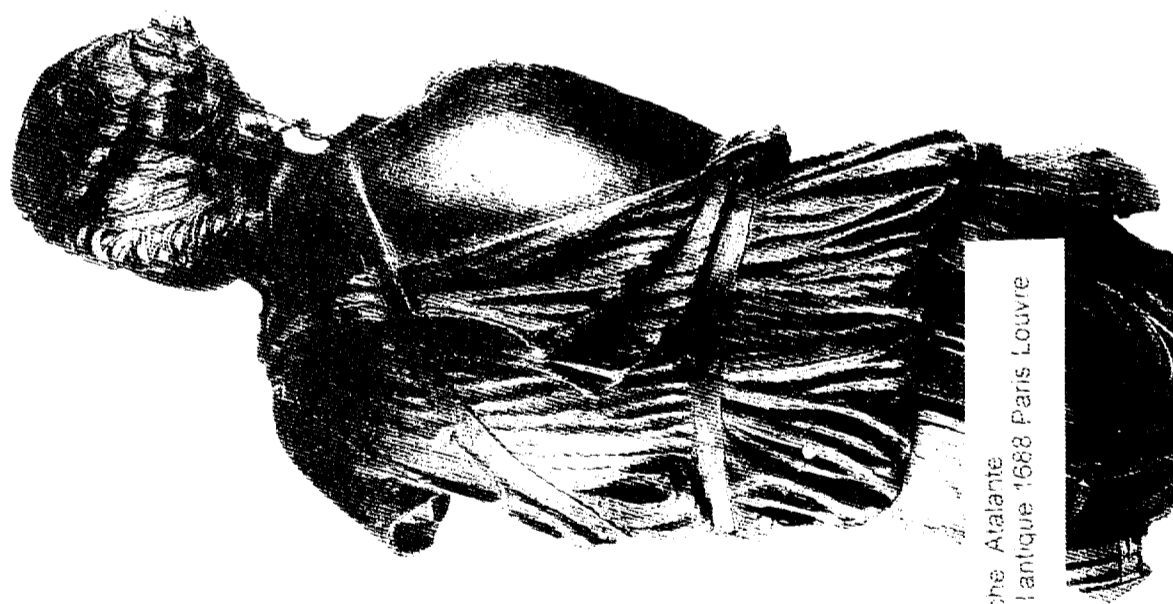
Demeter marbre
Phidias (450-400 av JC)
Louvre Paris



Tunique Josephine 1908
Paul Ince
musée Galliera Paris



torse féminin Phidias Rome
époque classique Paris Louvre



J. Vinache Atalante
d'après l'antique 1688 Paris Louvre

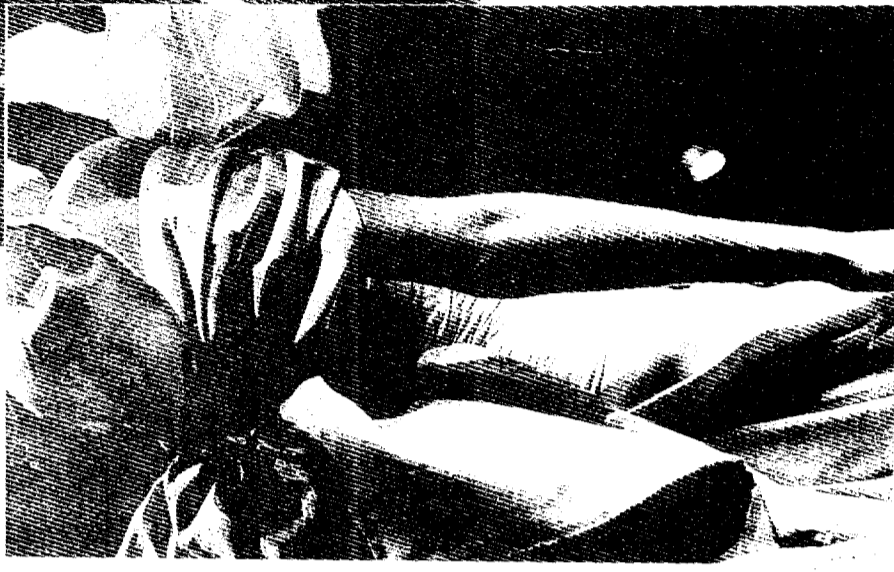


Tibère 1er siècle ap J.C.

Robe du soir
Gres 1936
photographe Houningen Huene

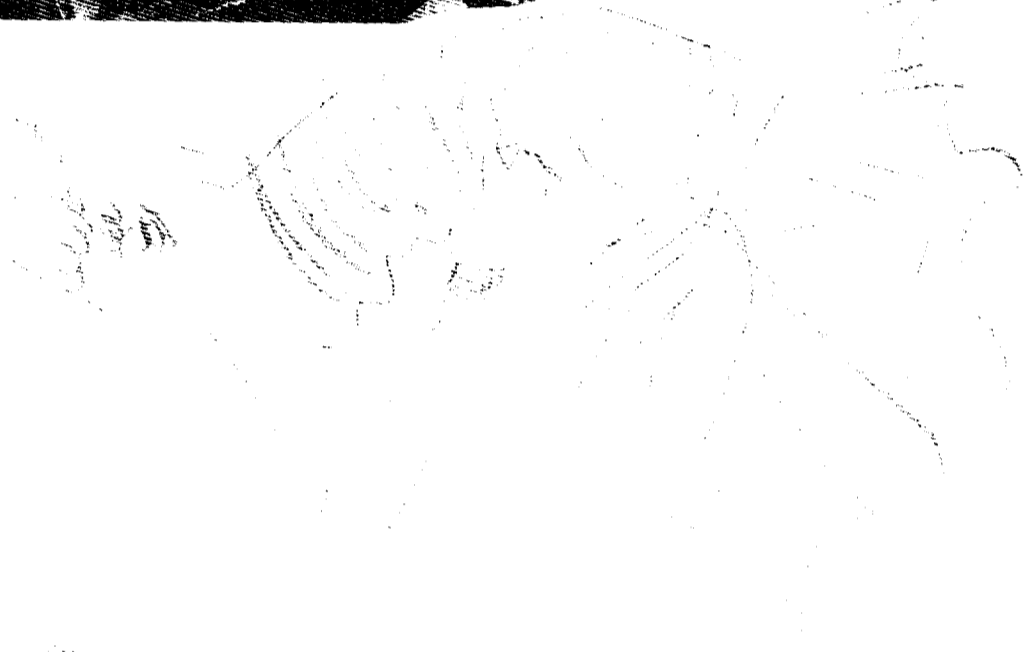


La demoiselle d'honneur 1883-85
James Tissot
Leeds musée

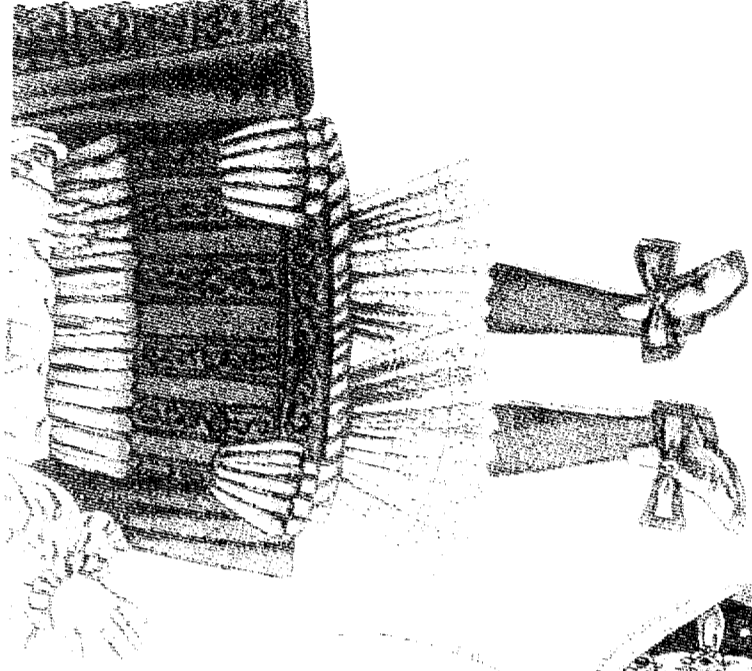


Robe du soir
Ch. Lacroix 1999

croquis Yves Saint Laurent
robe du soir 1966

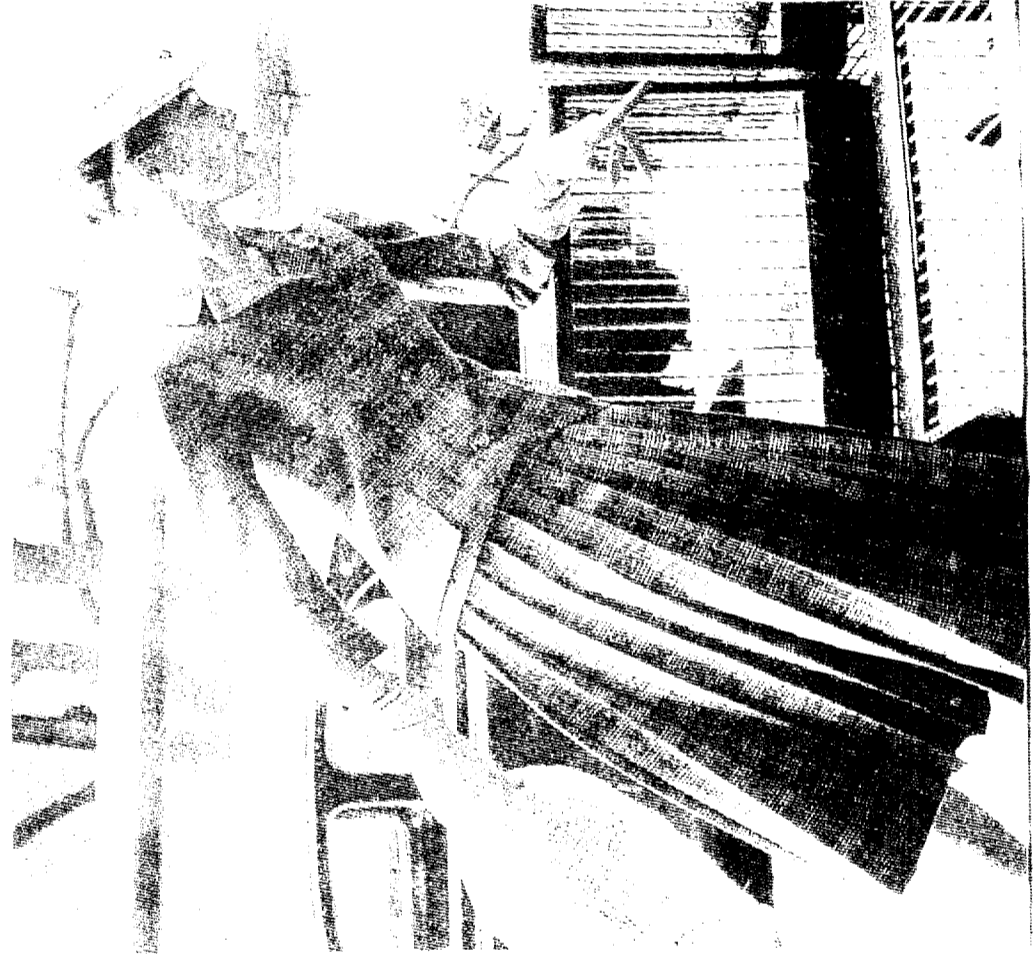
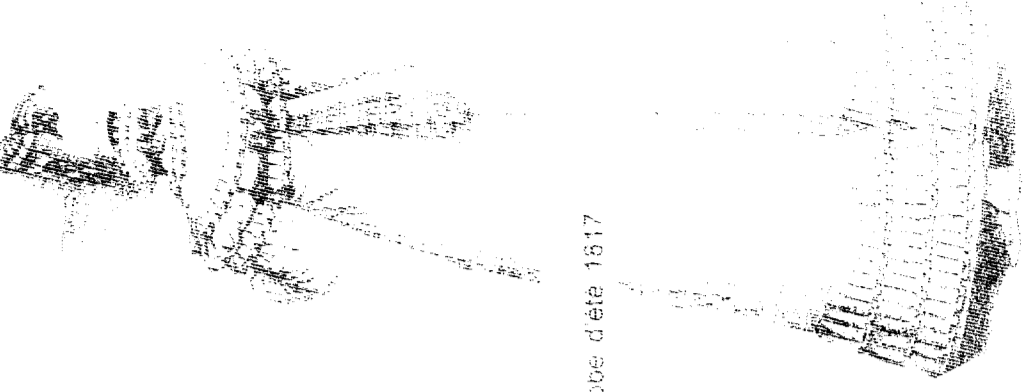


375
fraise circulaire haut cor en éventail
reine E. d'Angleterre 1533, 1603

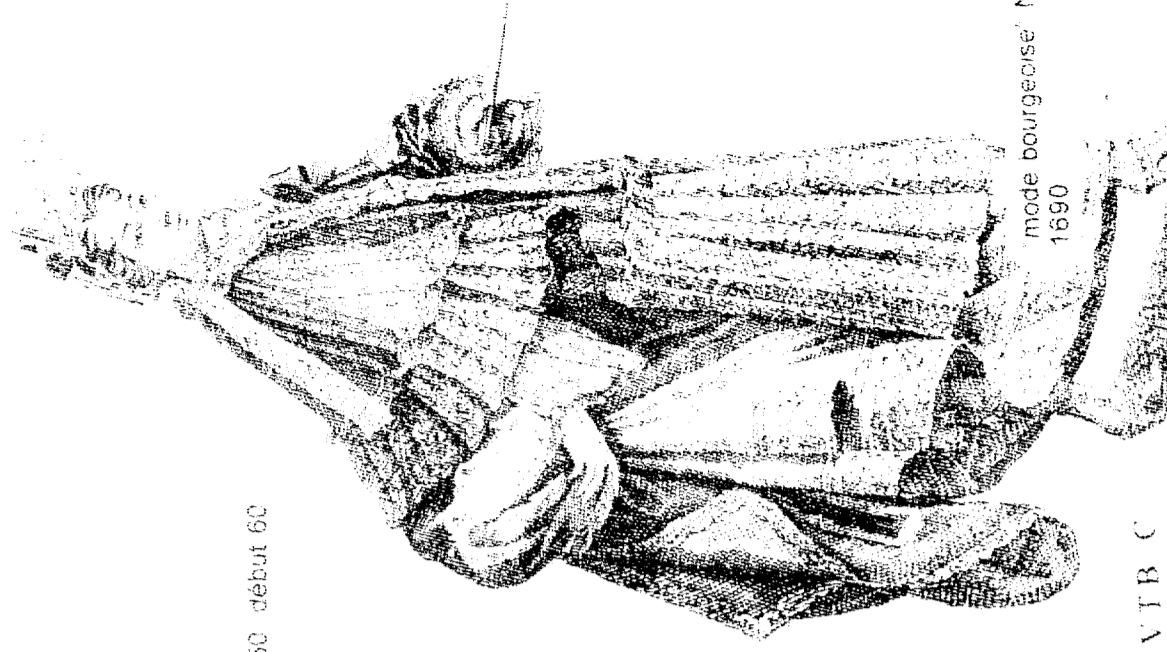


Louis XIV en 1660

robe d'été 1617



jupe plissée
fin des années 50 début 60



mode bourgeoise N. Guérard
1690