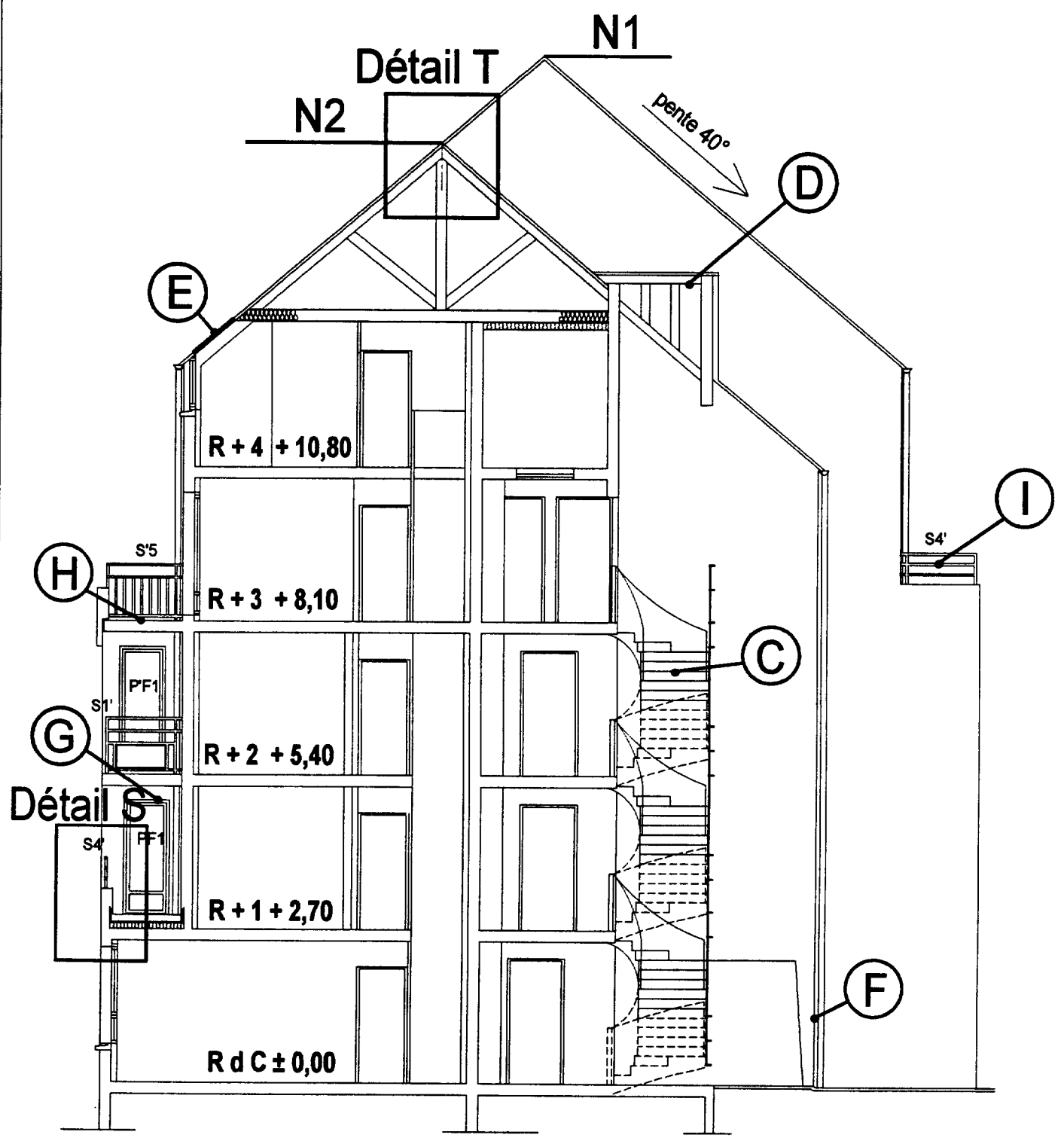


# COUPE "Z"

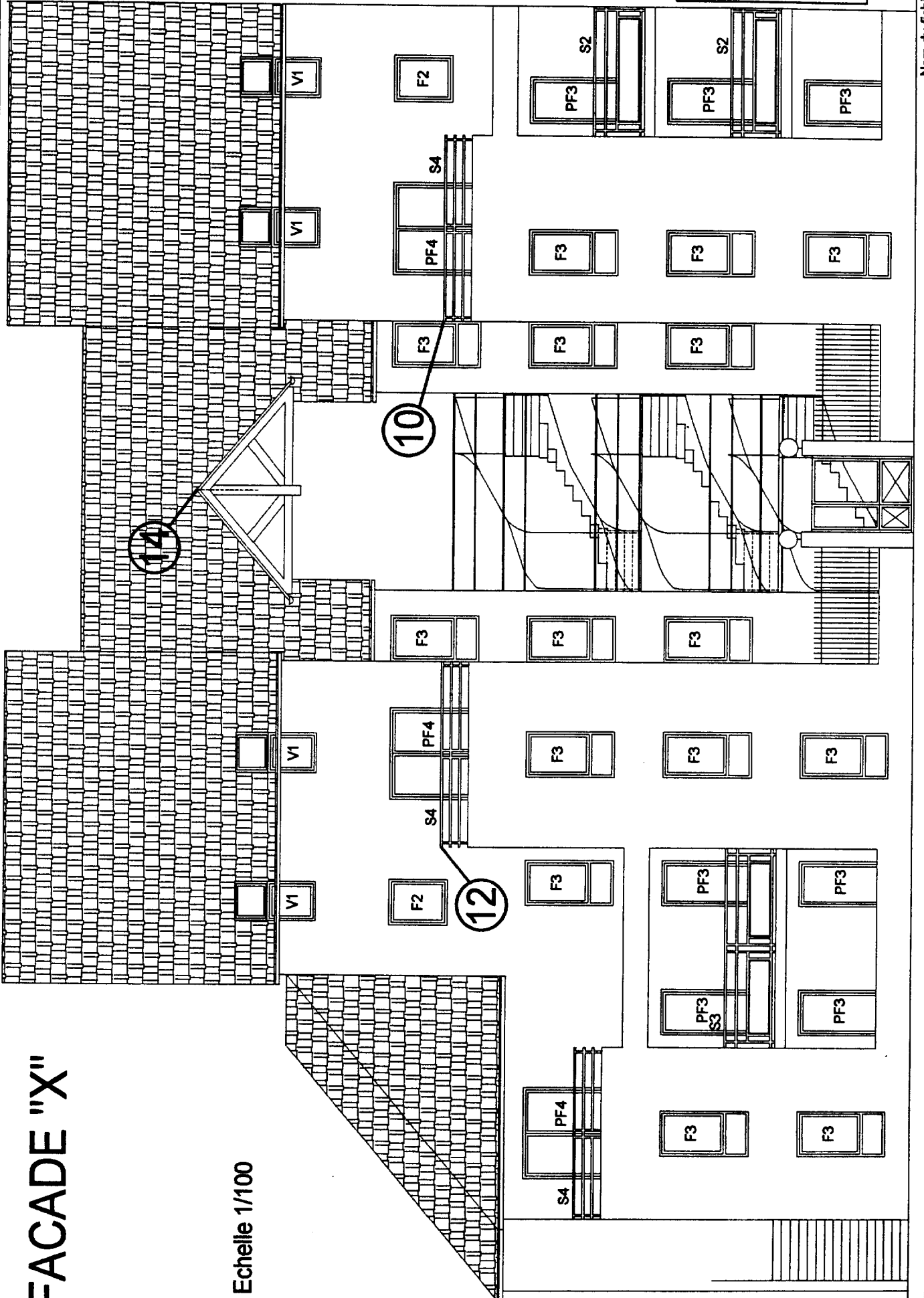


Echelle 1/100

# FACADE "X"

Echelle 1/100

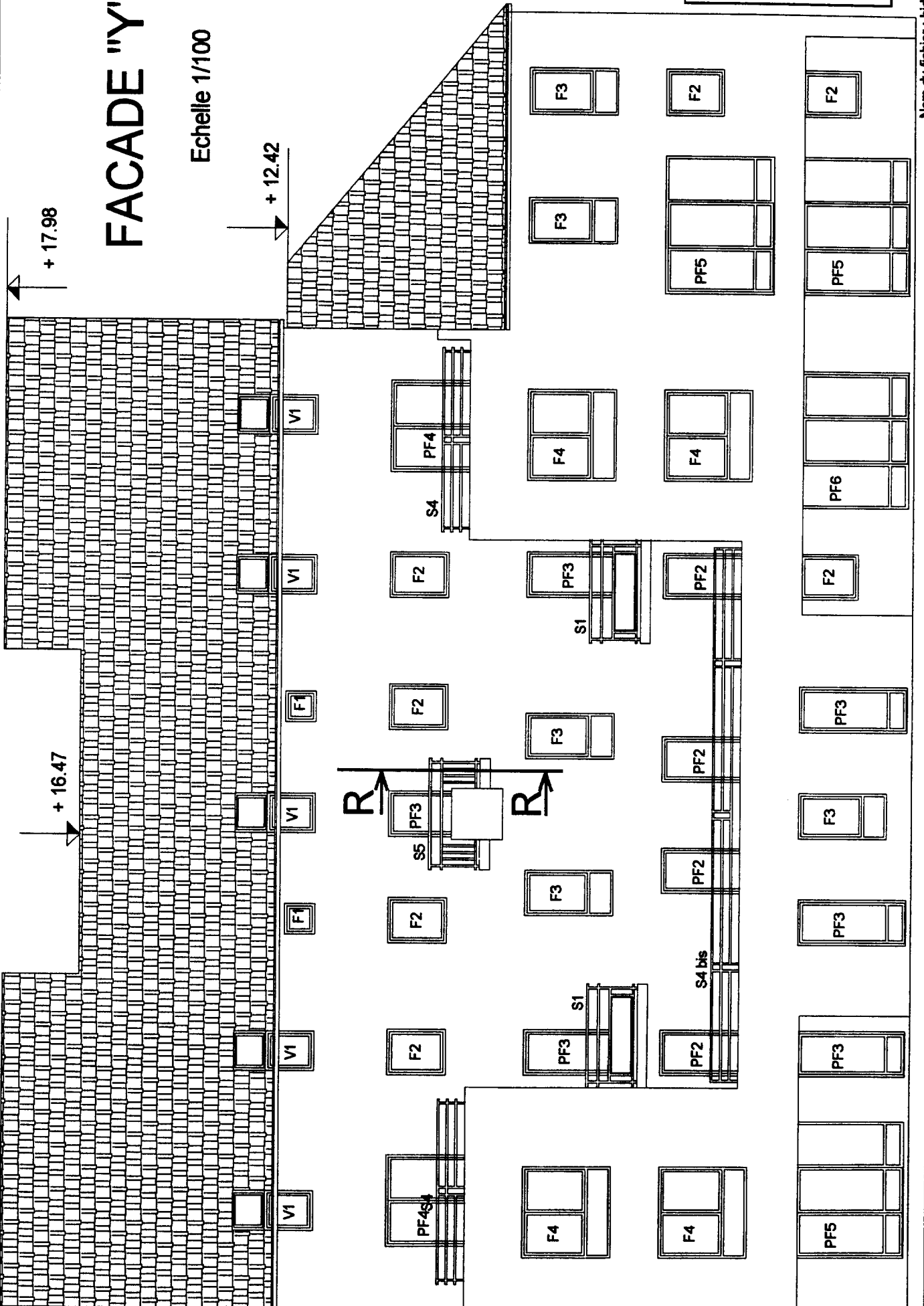
DT 8/13



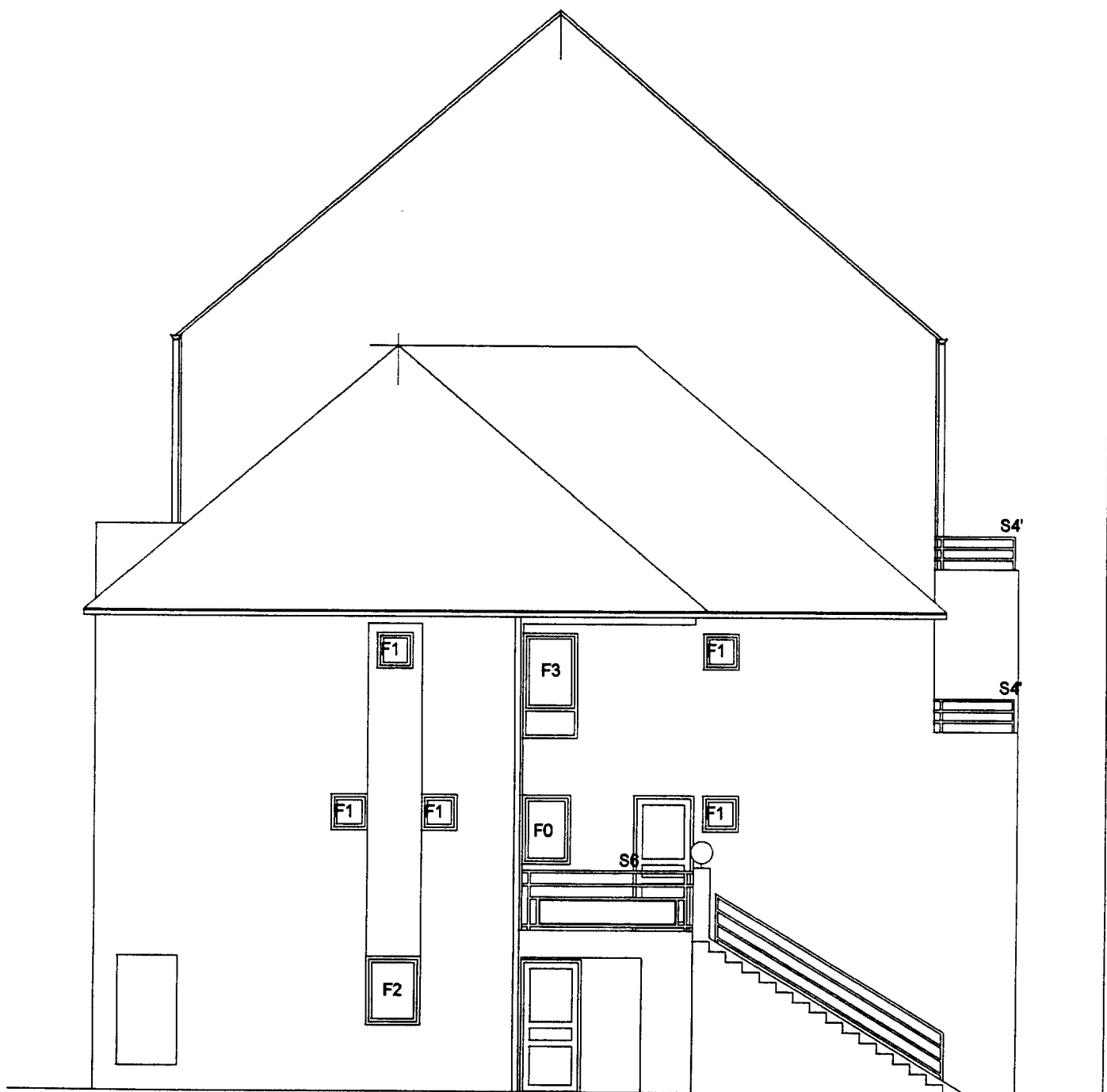
# FACADE "Y"

Echelle 1/100

DT 9/13



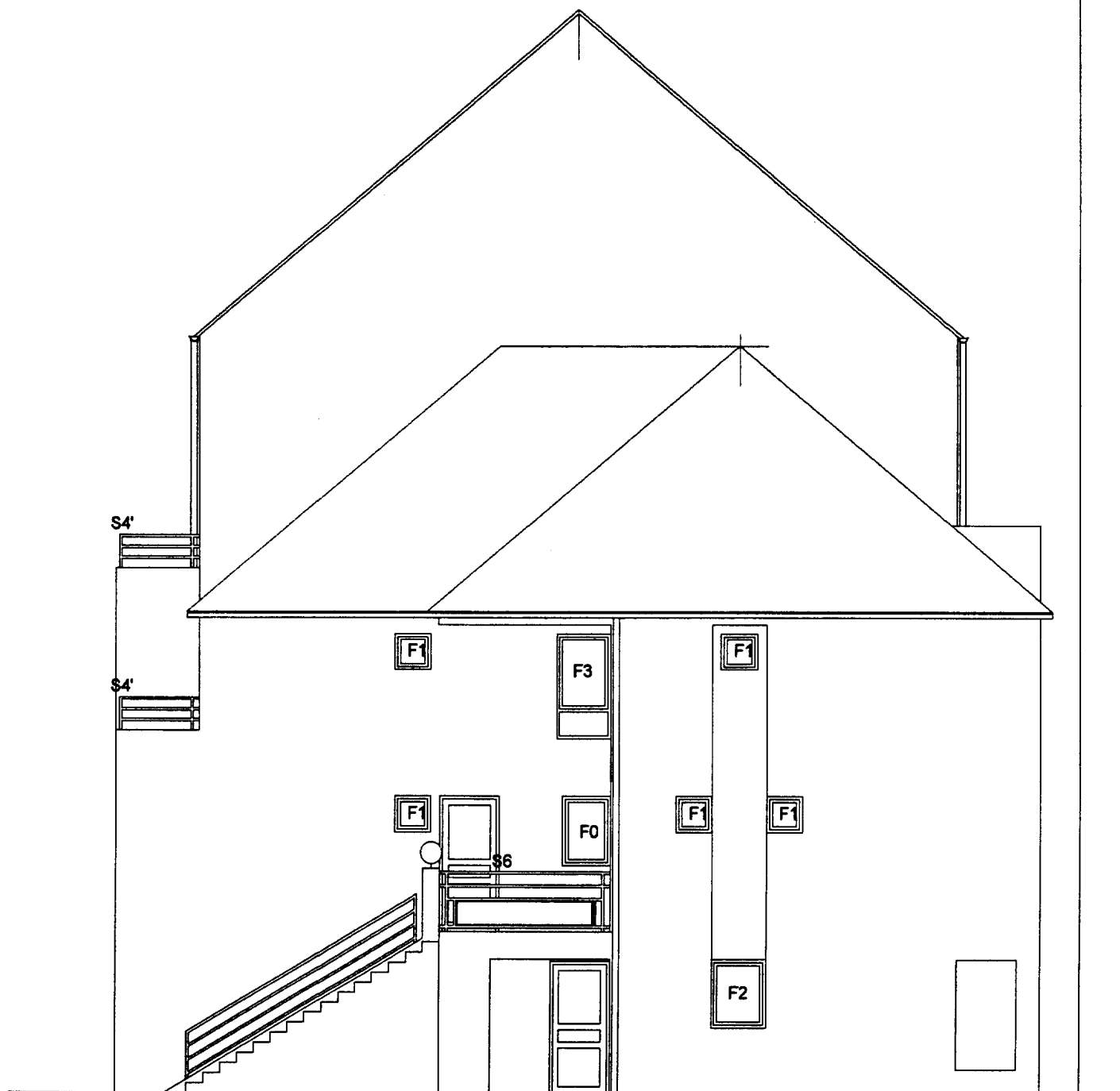
# PIGNON EST



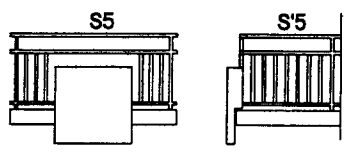
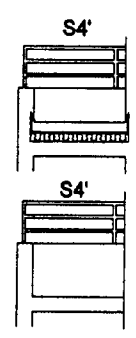
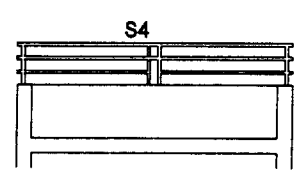
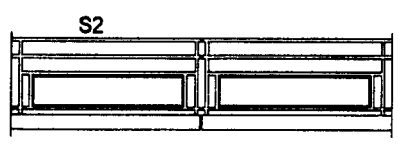
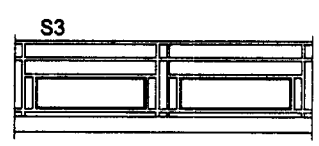
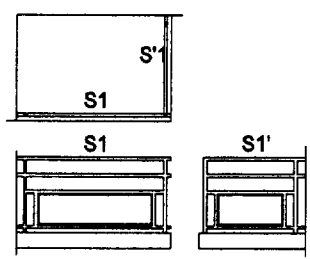
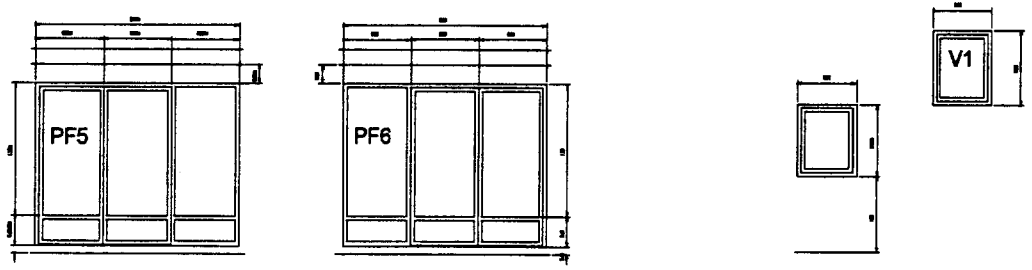
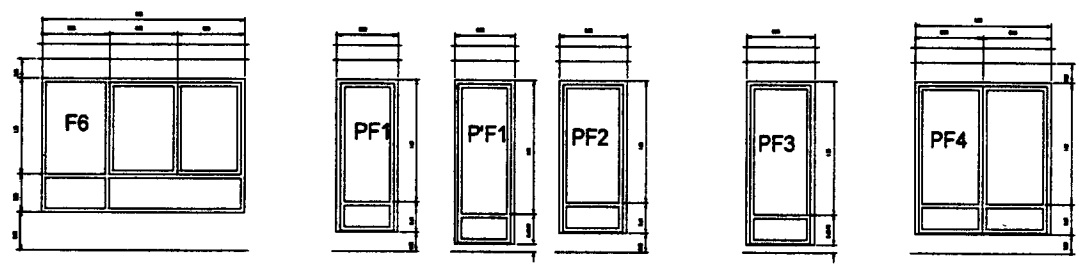
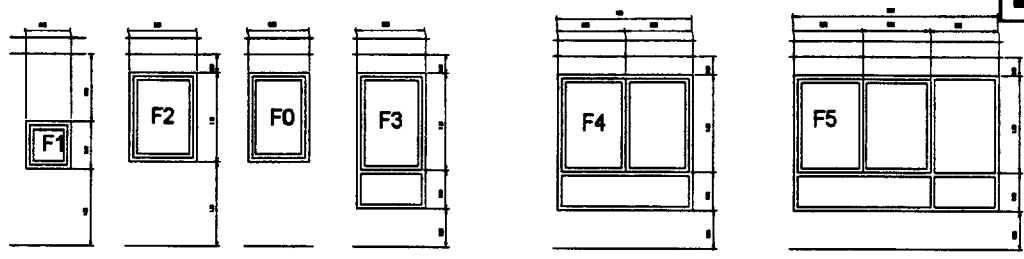
Echelle 1/100

# PIGNON OUEST

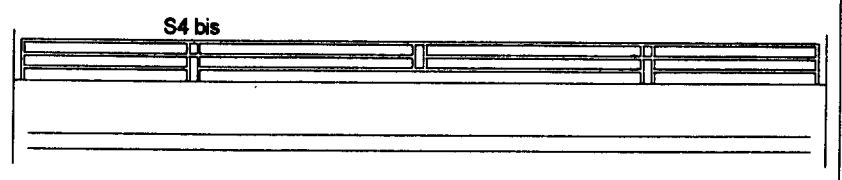
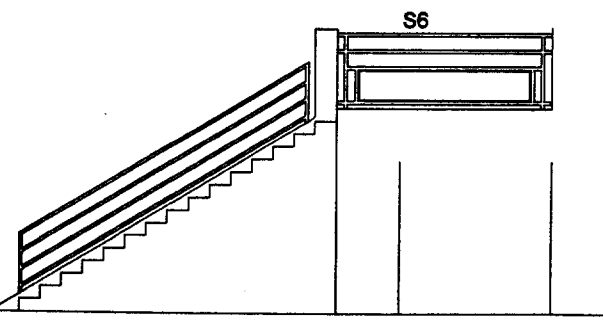
DT 11/13



Echelle 1/100



**CALEPIN DES MENUISERIES  
ET DES GARDE-CORPS**



# EXTRAIT DES CLAUSES TECHNIQUES PARTICULIÈRES

**Lot n°145 - GROS ŒUVRE- MAÇONNERIE**

**Lot n°170 - CHARPENTE**

**Lot n°180 - COUVERTURE ÉTANCHÉITÉ**

**Lot n°335 - PLÂTRERIE - CLOISONS - DOUBLAGE - ISOLATION**

**Ce document comprend 6 pages**

**S.A. YONNE HABITATION**

Le C.C.T.P comprend 6 pages

Examen et spécialité : BEP CONSTRUCTION ET TOPOGRAPHIE

Dominante : CONSTRUCTION

SESSION : 2000